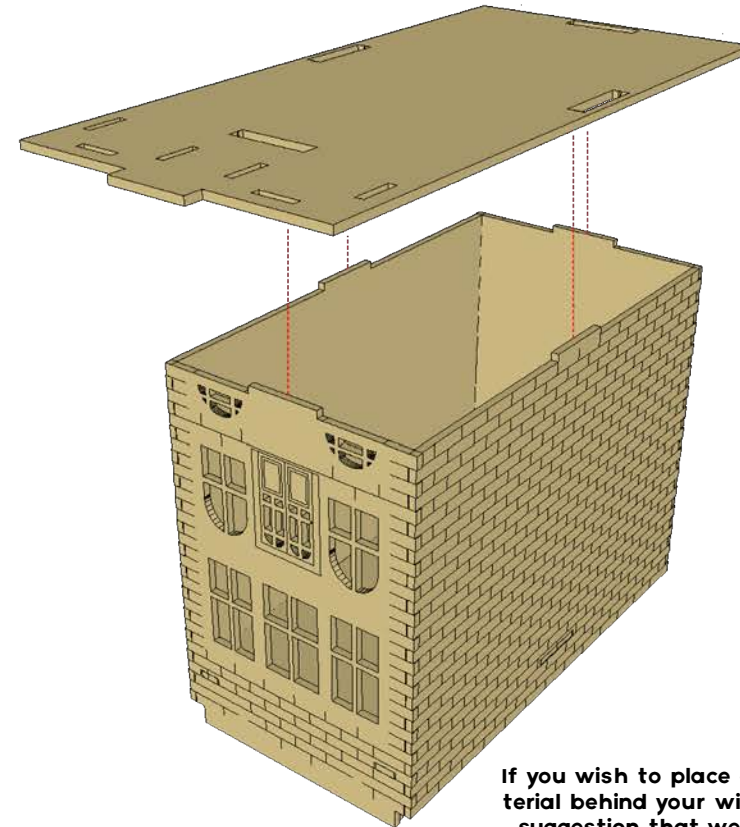
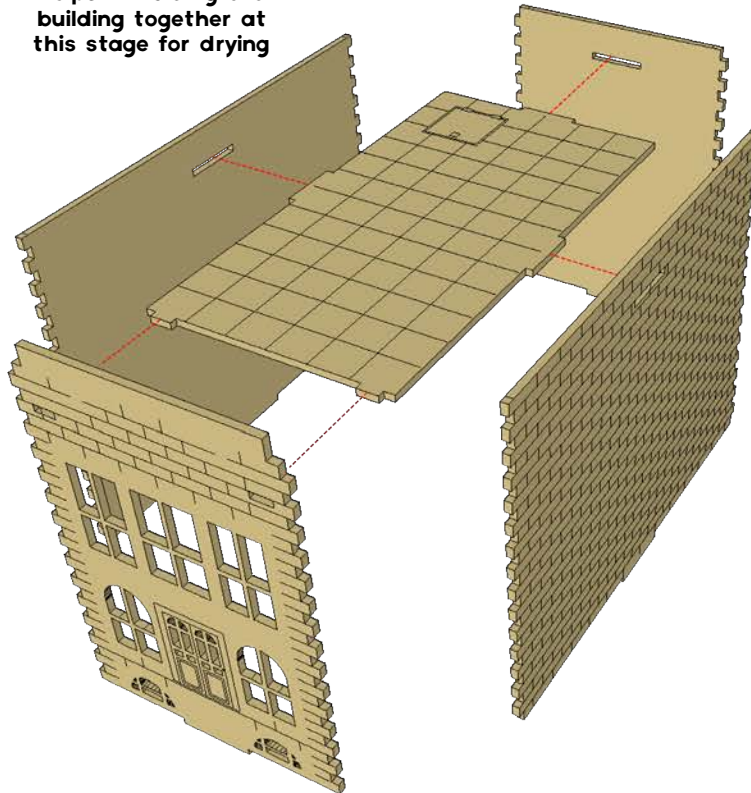


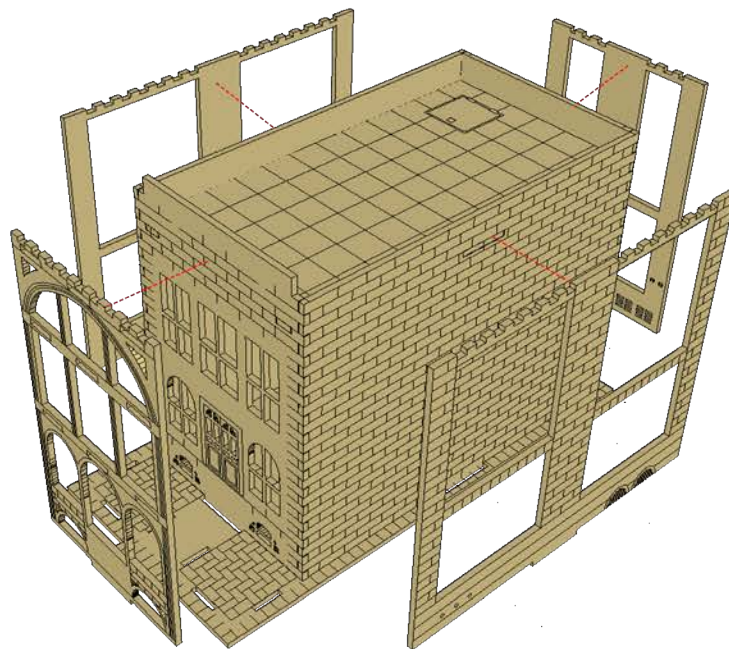
# 1889 MIGNOLA AVE ASSEMBLY INSTRUCTIONS

We have found that a large elastic band helps in holding the building together at this stage for drying

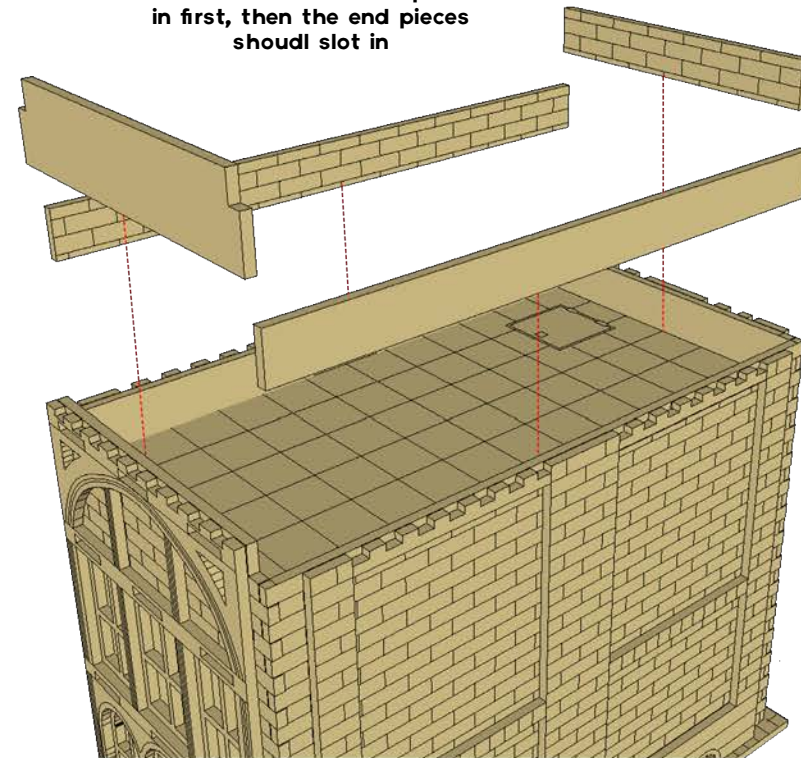


If you wish to place a backing material behind your windows (a good suggestion that we have used is reflective foil card, available from art and stationary stores), do not glue the base in place at this time, wait until after painting the main building. You will still need to slot the base in place to assist with the gluing of the facade pieces however.

# 1889 MIGNOLA AVE ASSEMBLY INSTRUCTIONS

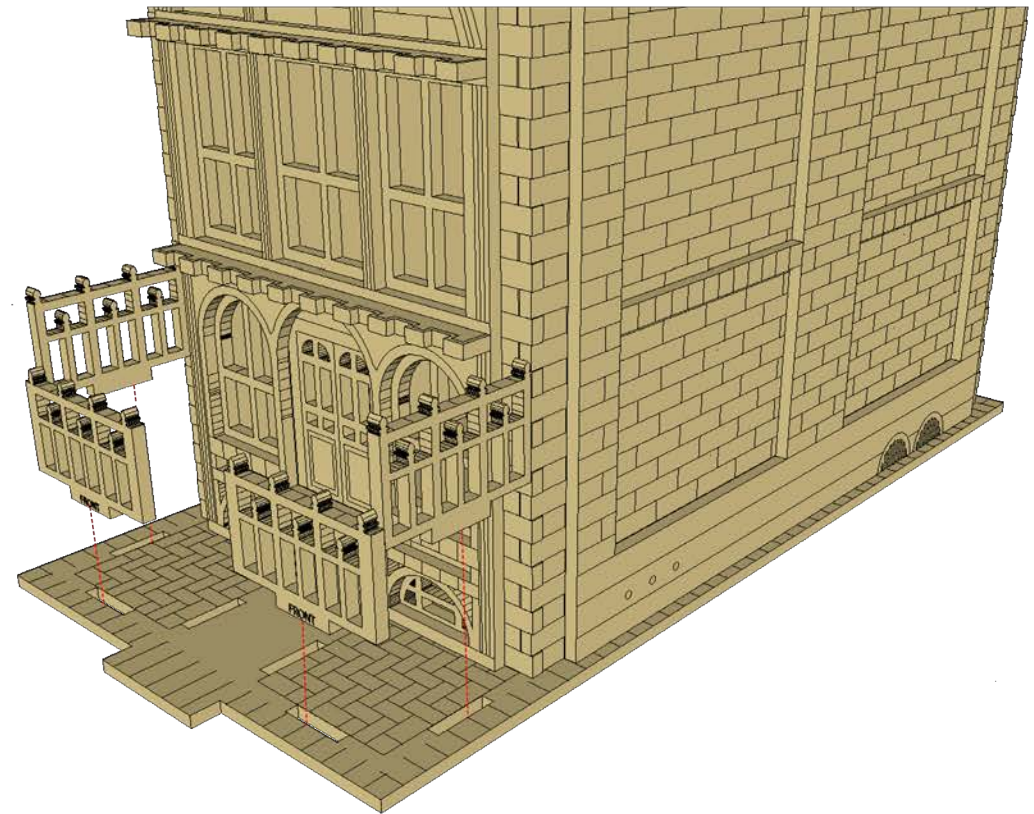
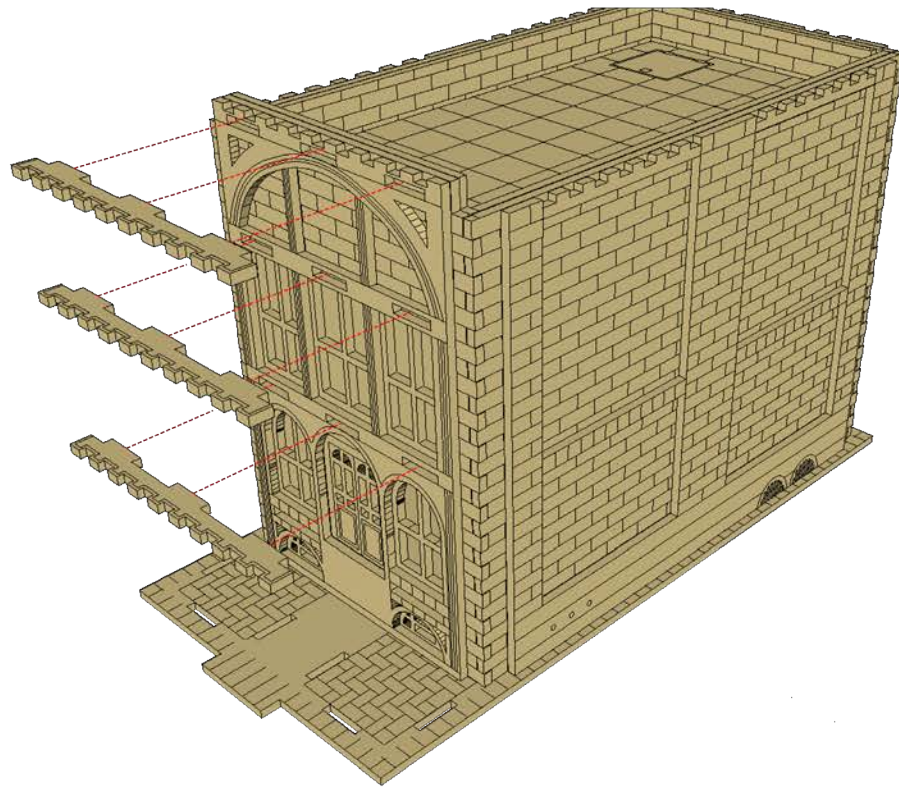


Glue the side roof trim pieces  
in first, then the end pieces  
should slot in





# 1889 MIGNOLA AVE ASSEMBLY INSTRUCTIONS





# 1889 MIGNOLA AVE ASSEMBLY INSTRUCTIONS

