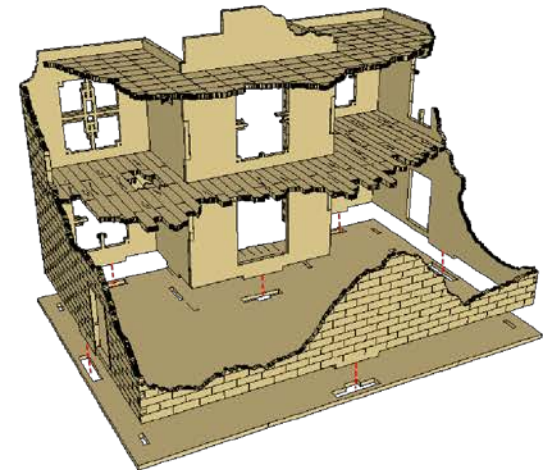
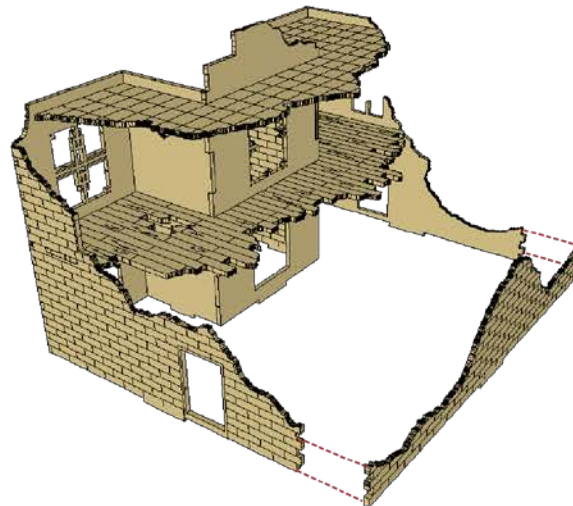
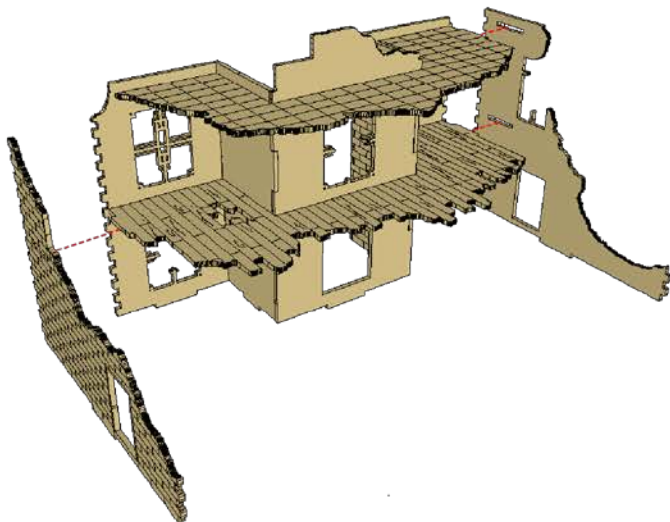
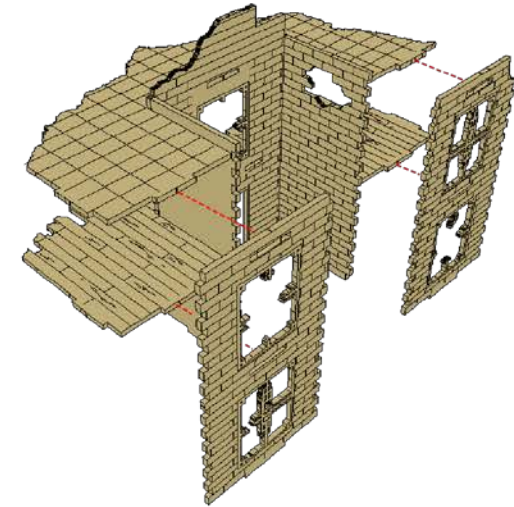
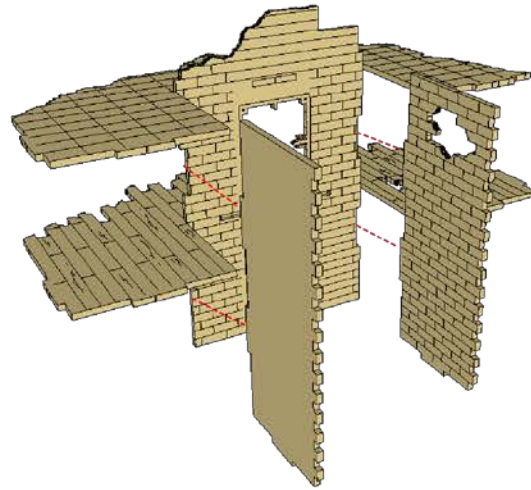
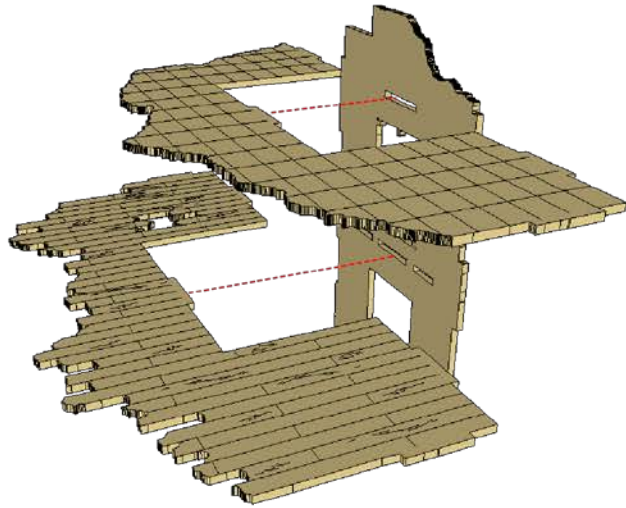


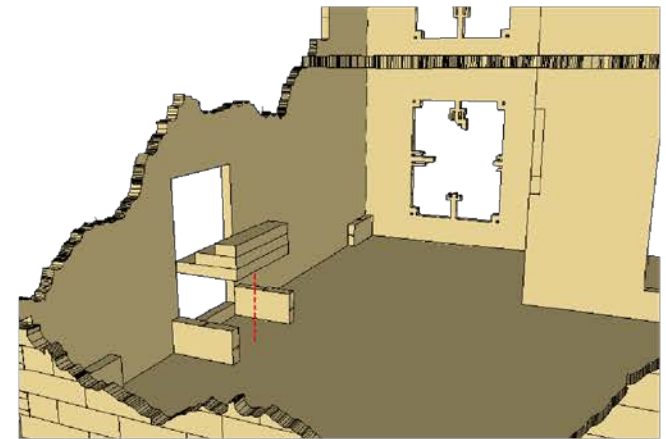
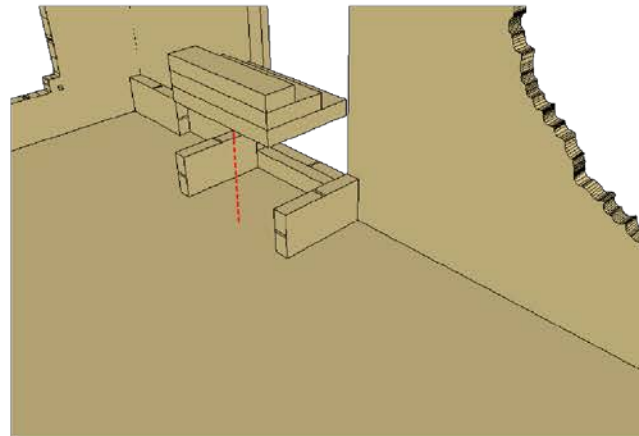
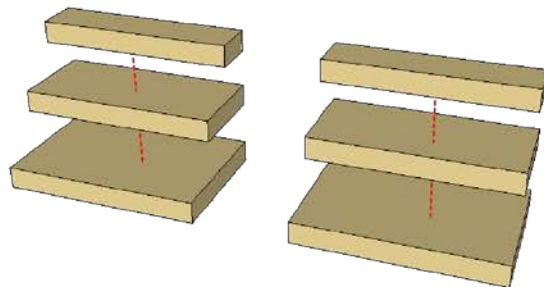
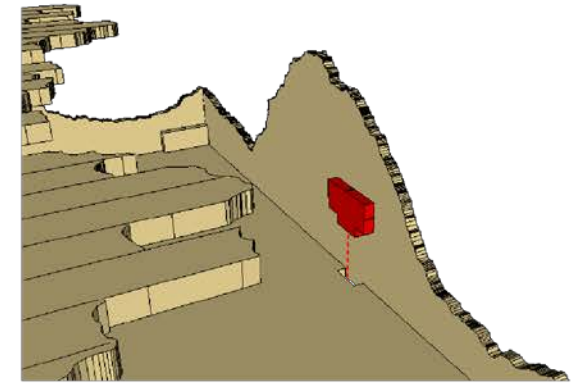
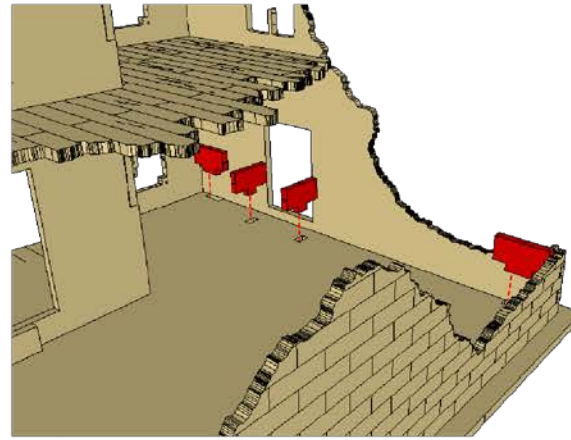
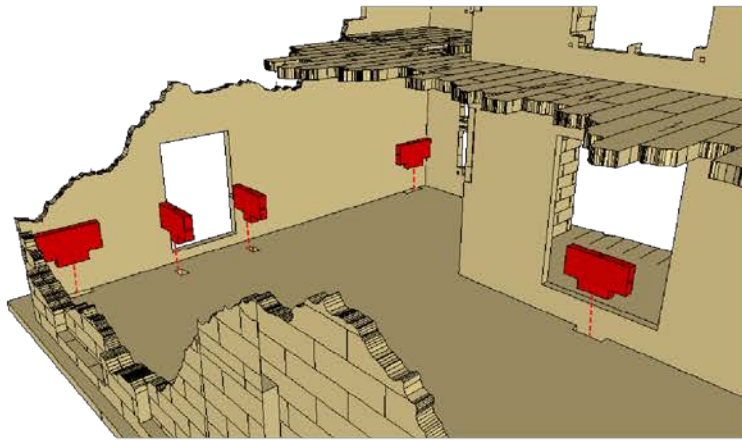


68 O'NEAL ROW RUIN ASSEMBLY INSTRUCTIONS



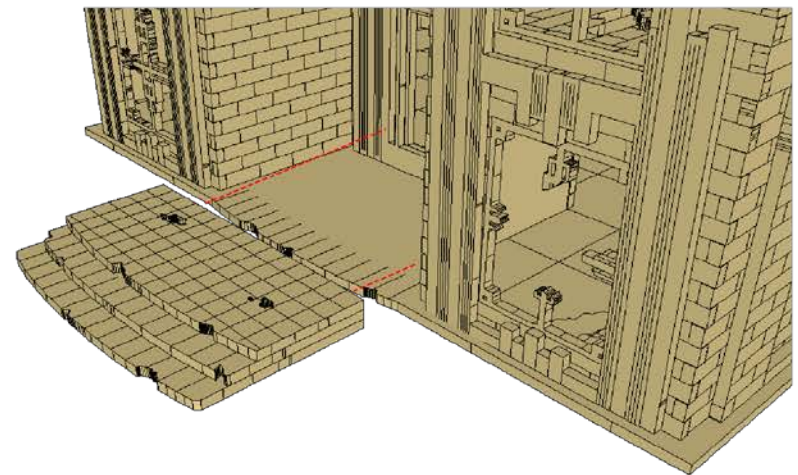
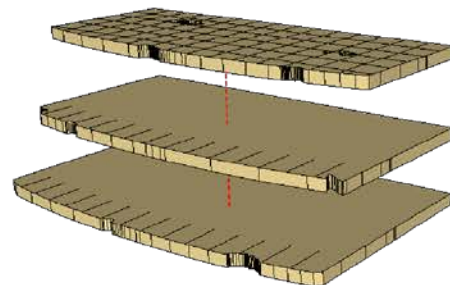
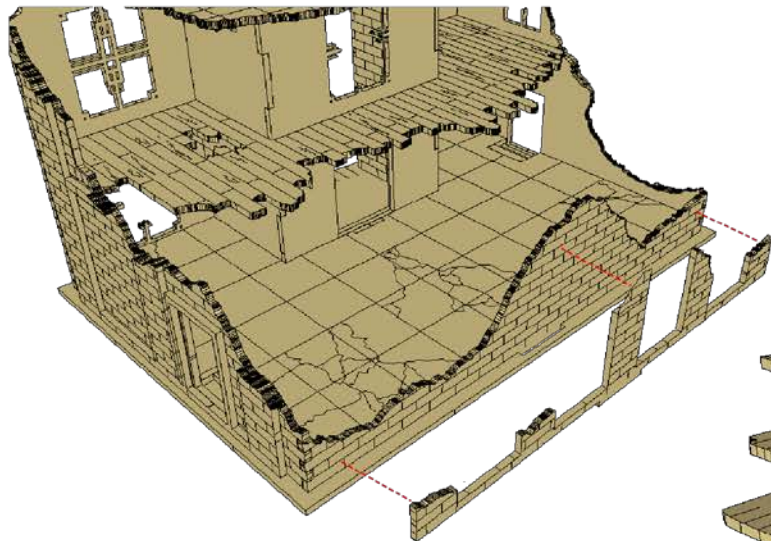
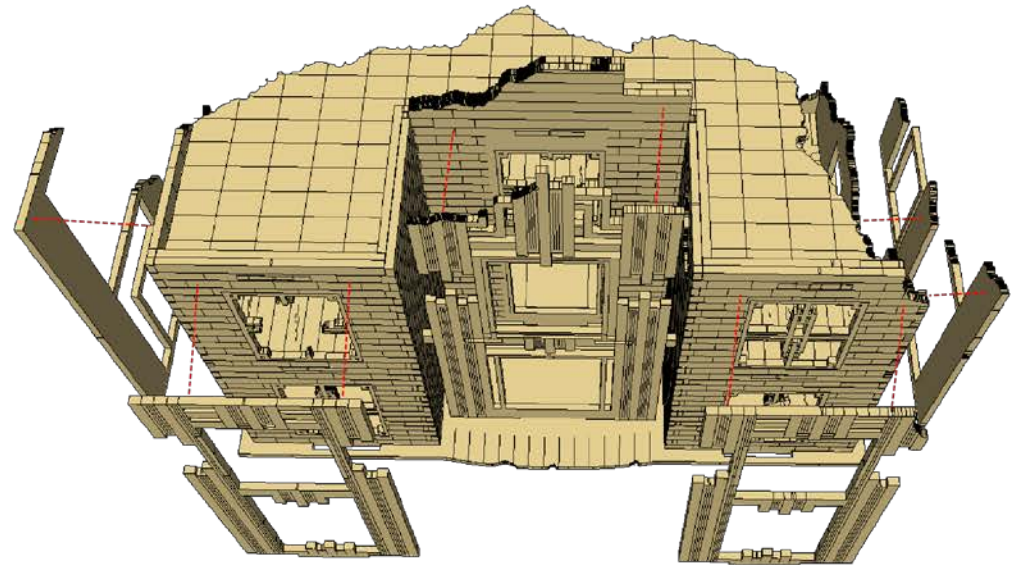
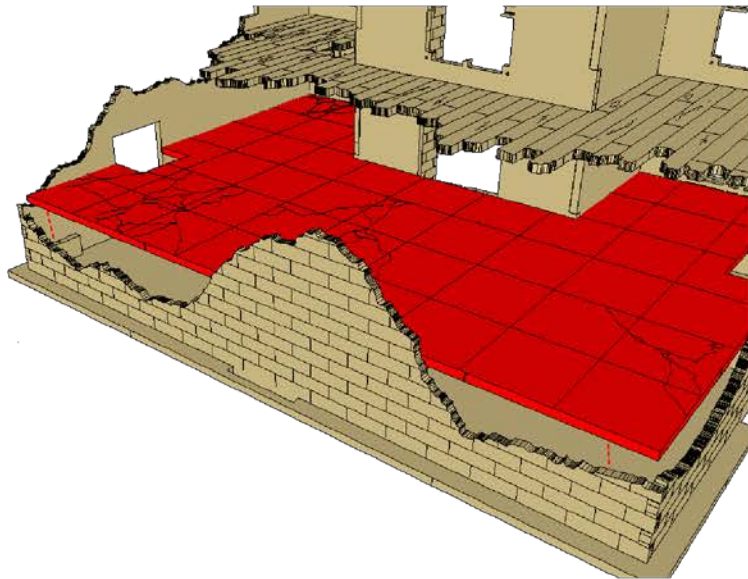


68 O'NEAL ROW RUIN ASSEMBLY INSTRUCTIONS



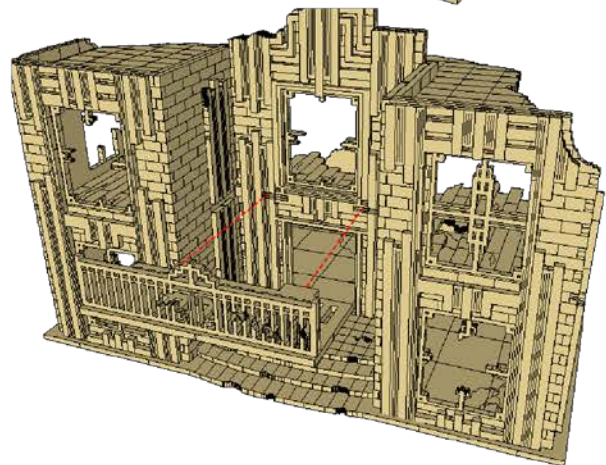
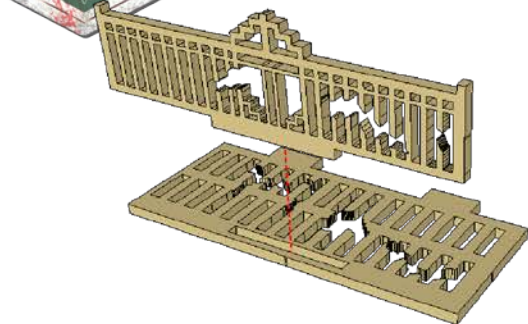


68 O'NEAL ROW RUIN ASSEMBLY INSTRUCTIONS





68 O'NEAL ROW RUIN ASSEMBLY INSTRUCTIONS



The doors are loose and can be glued anywhere you like :)

