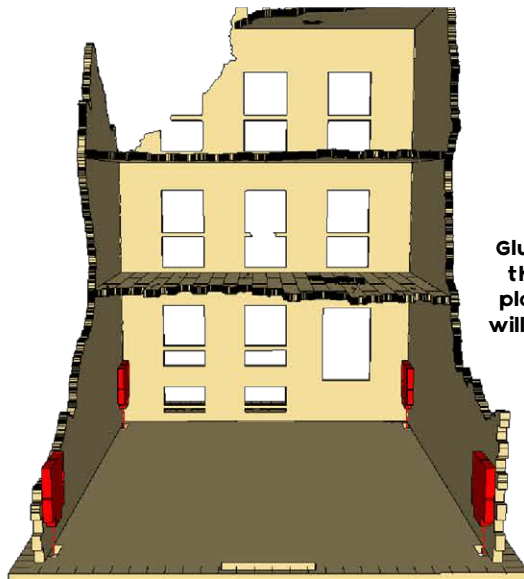
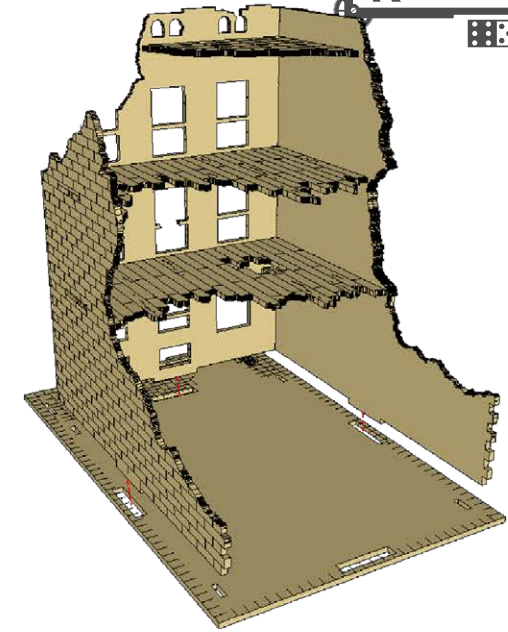
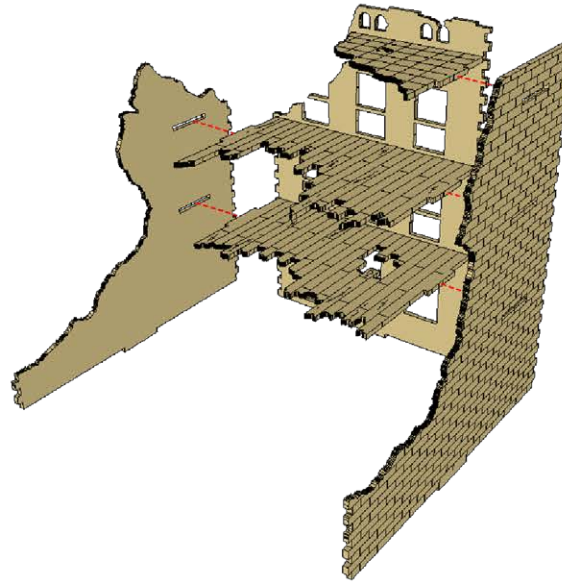
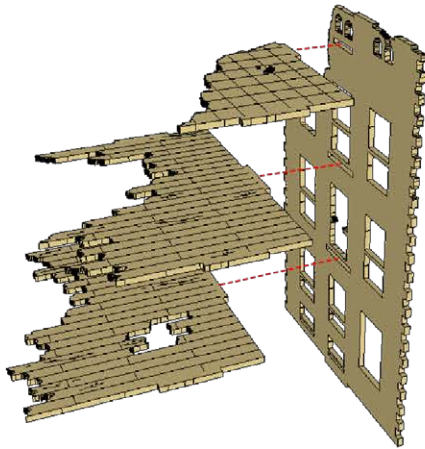
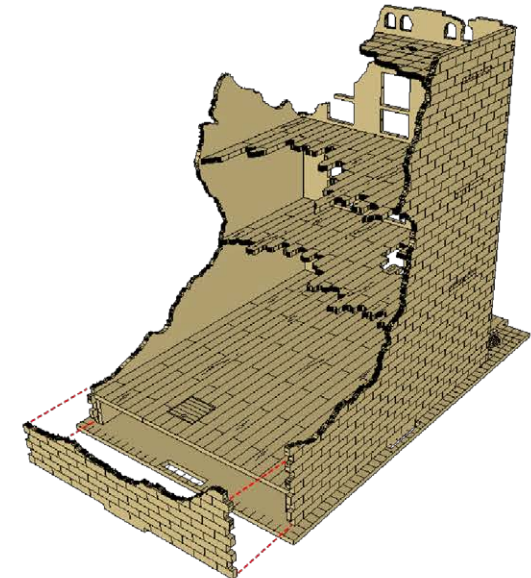
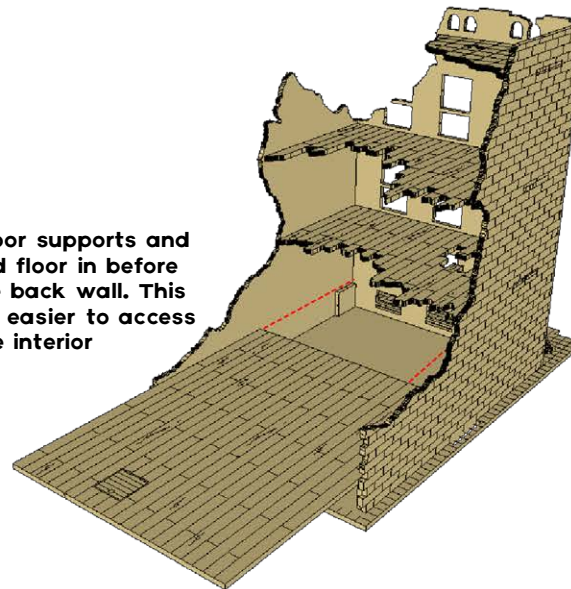




89 MOORE STREET RUIN ASSEMBLY INSTRUCTIONS

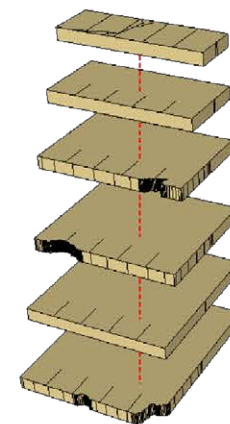
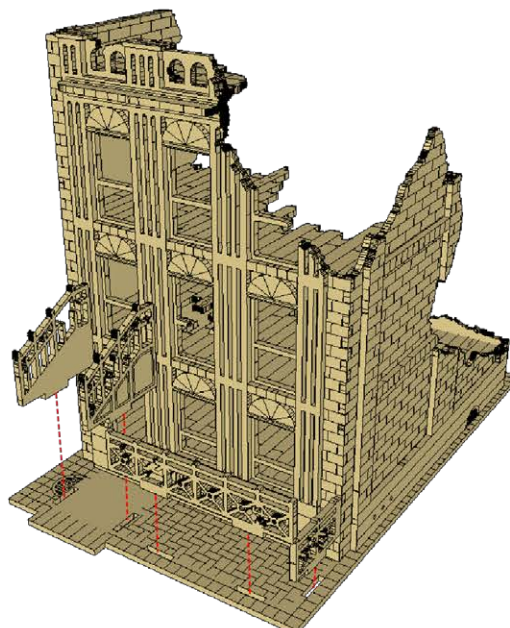
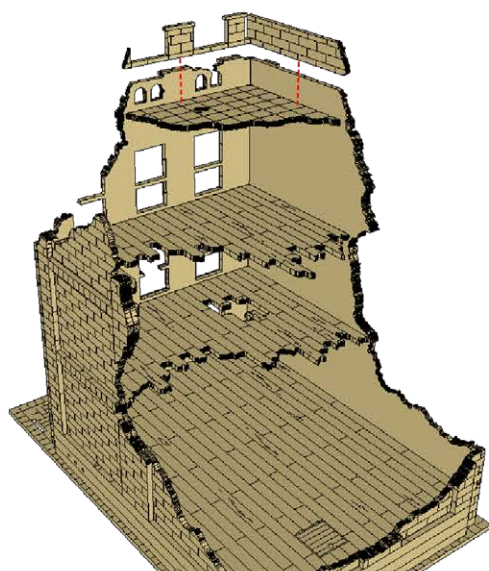
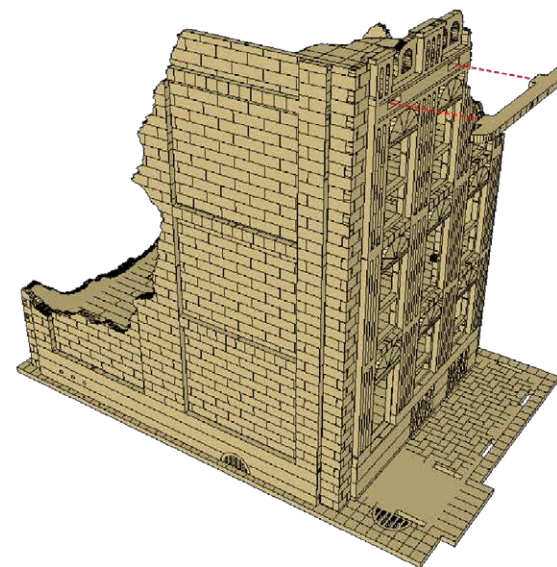
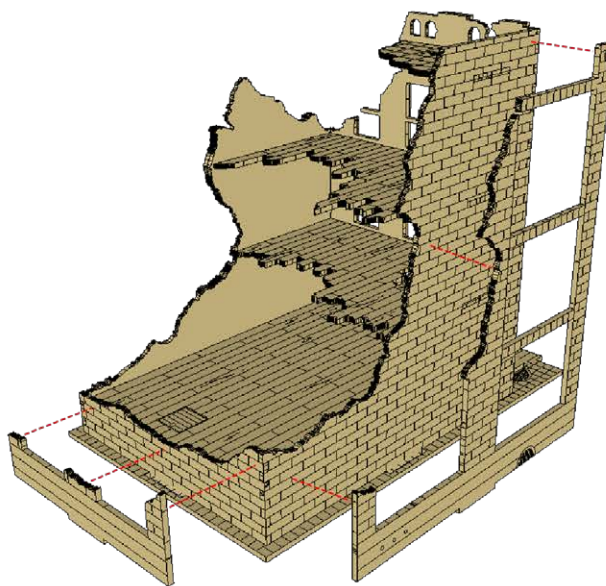
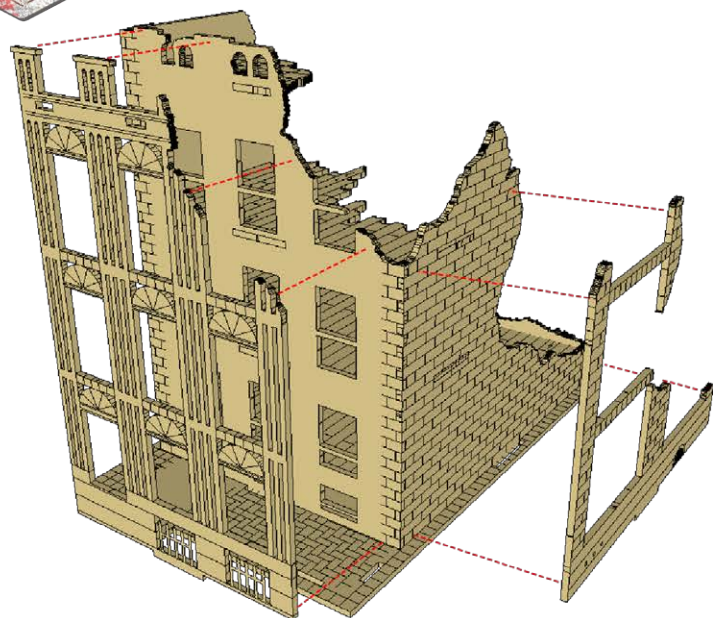


Glue the floor supports and the ground floor in before placing the back wall. This will make it easier to access the interior



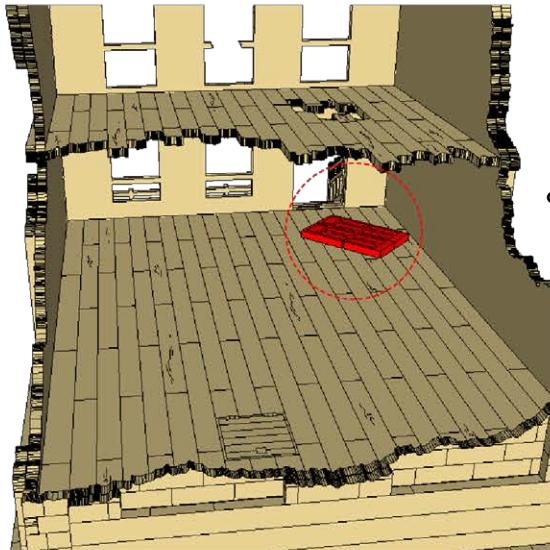
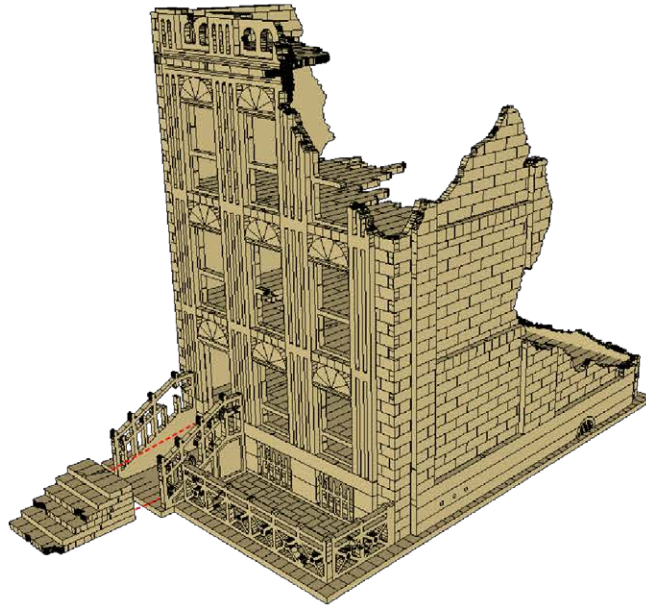


89 MOORE STREET RUIN ASSEMBLY INSTRUCTIONS





89 MOORE STREET RUIN ASSEMBLY INSTRUCTIONS



The door is loose and
can be glued anywhere
you like :)

