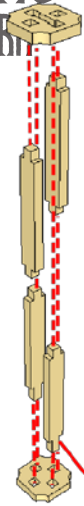
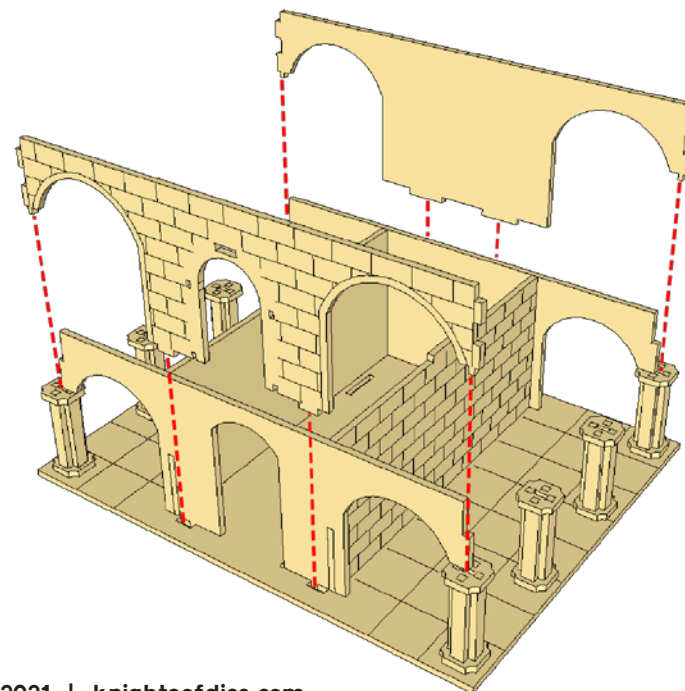
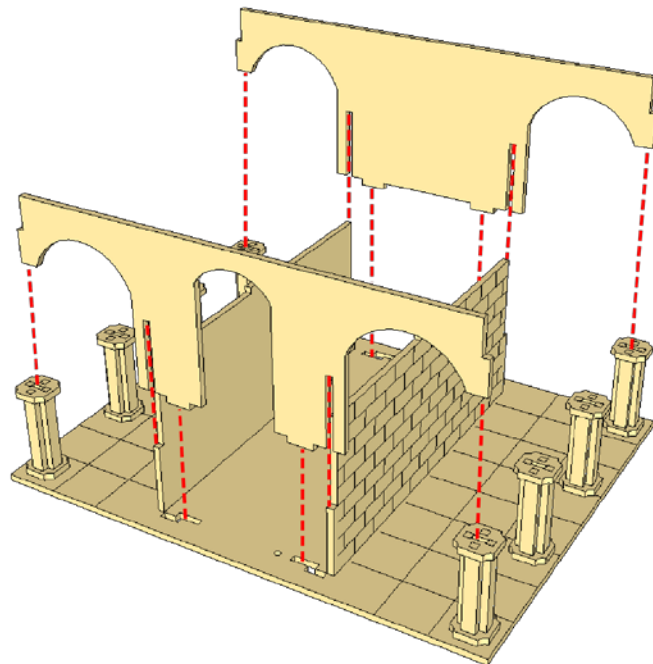
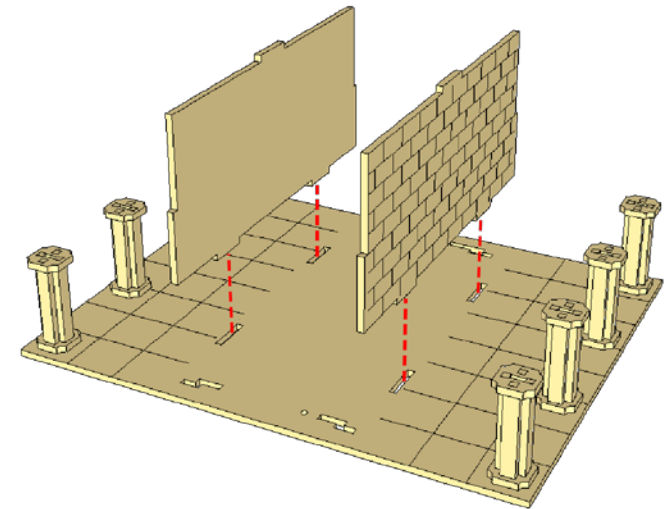
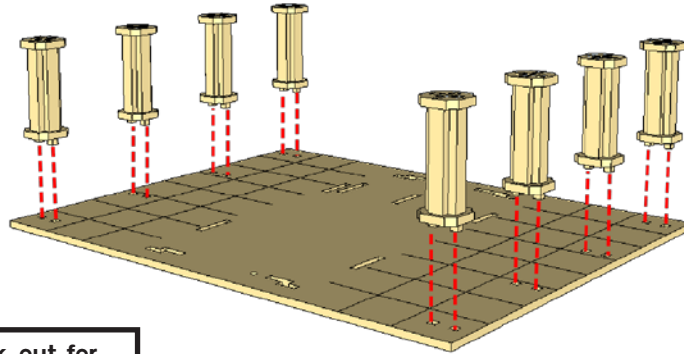


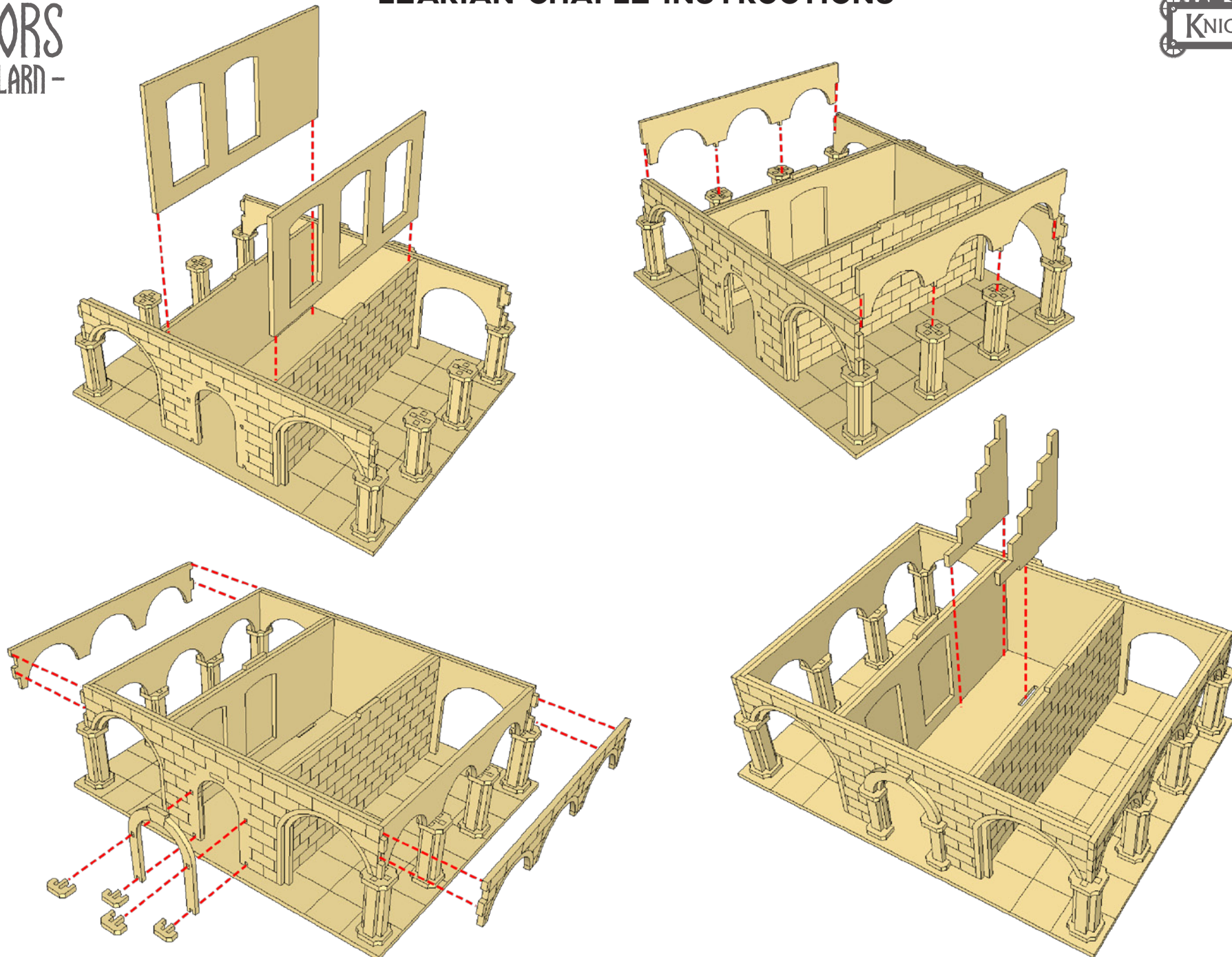
ELARIAN CHAPEL INSTRUCTIONS




Keep a look out for the longer tabs. They should be parallel to each other



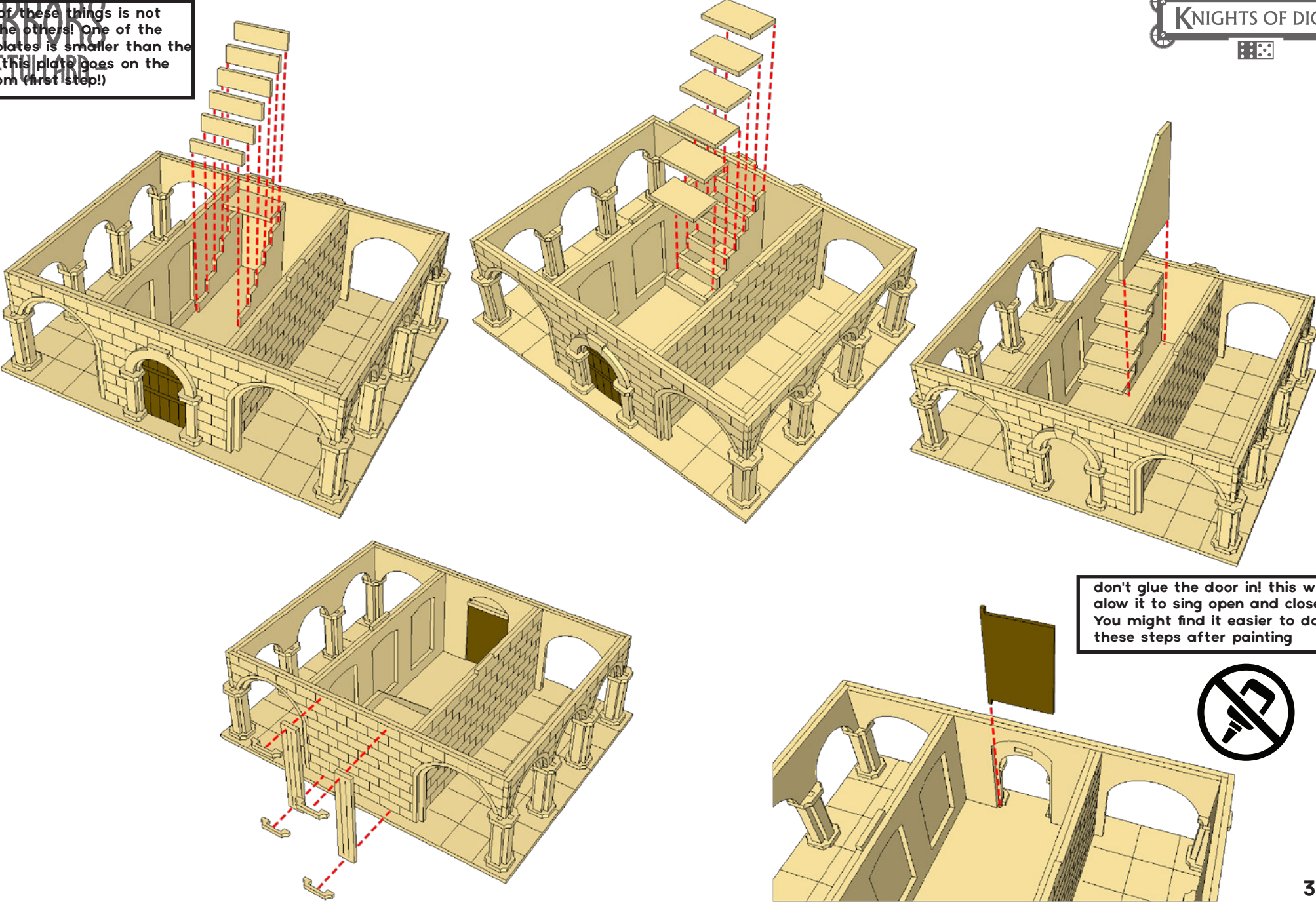
ELARIAN CHAPEL INSTRUCTIONS





One of these things is not like the others! One of the kickplates is smaller than the rest, this plate goes on the bottom (first step!)

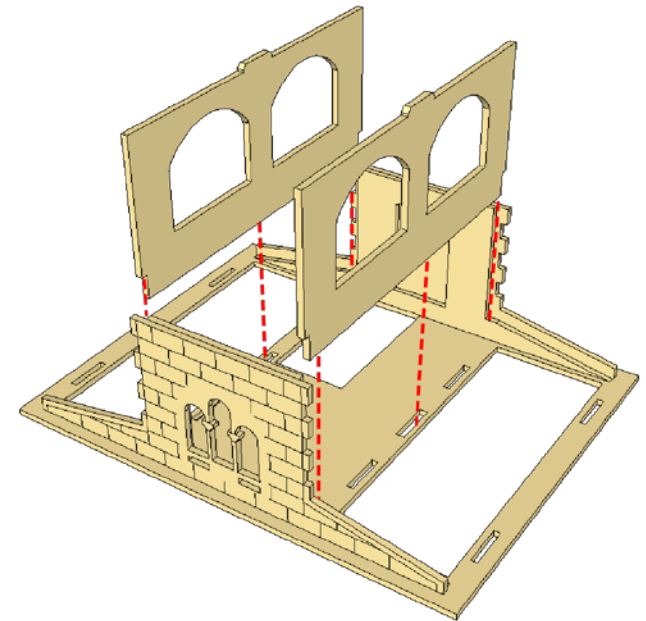
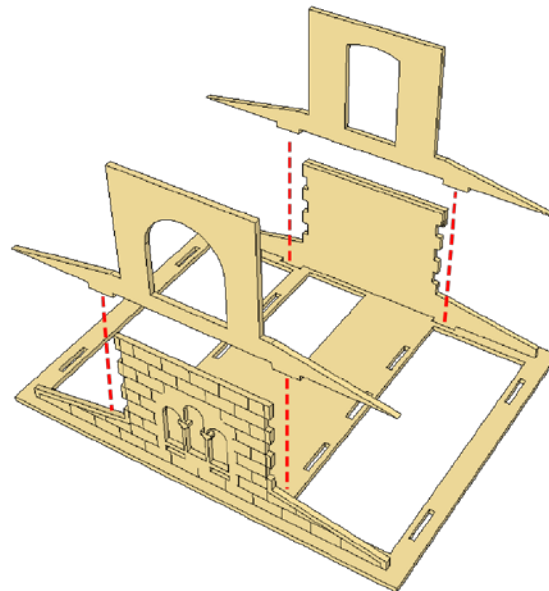
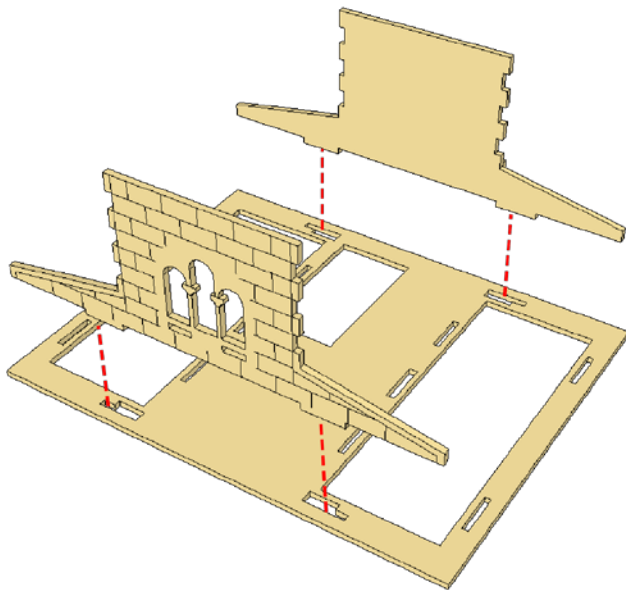
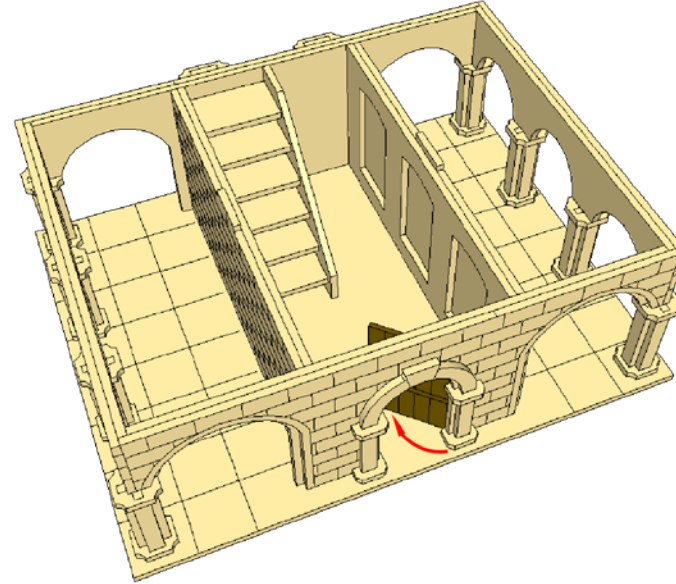
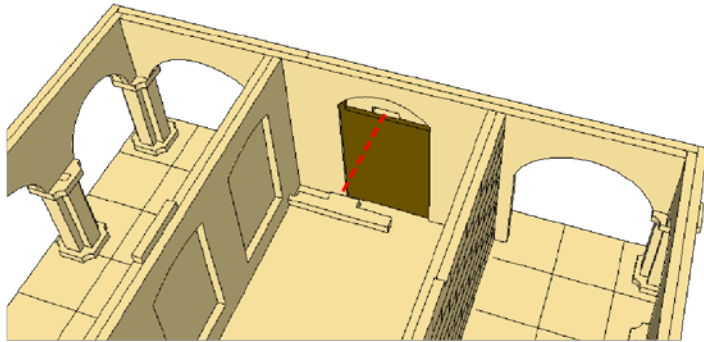
ELARIAN CHAPEL INSTRUCTIONS



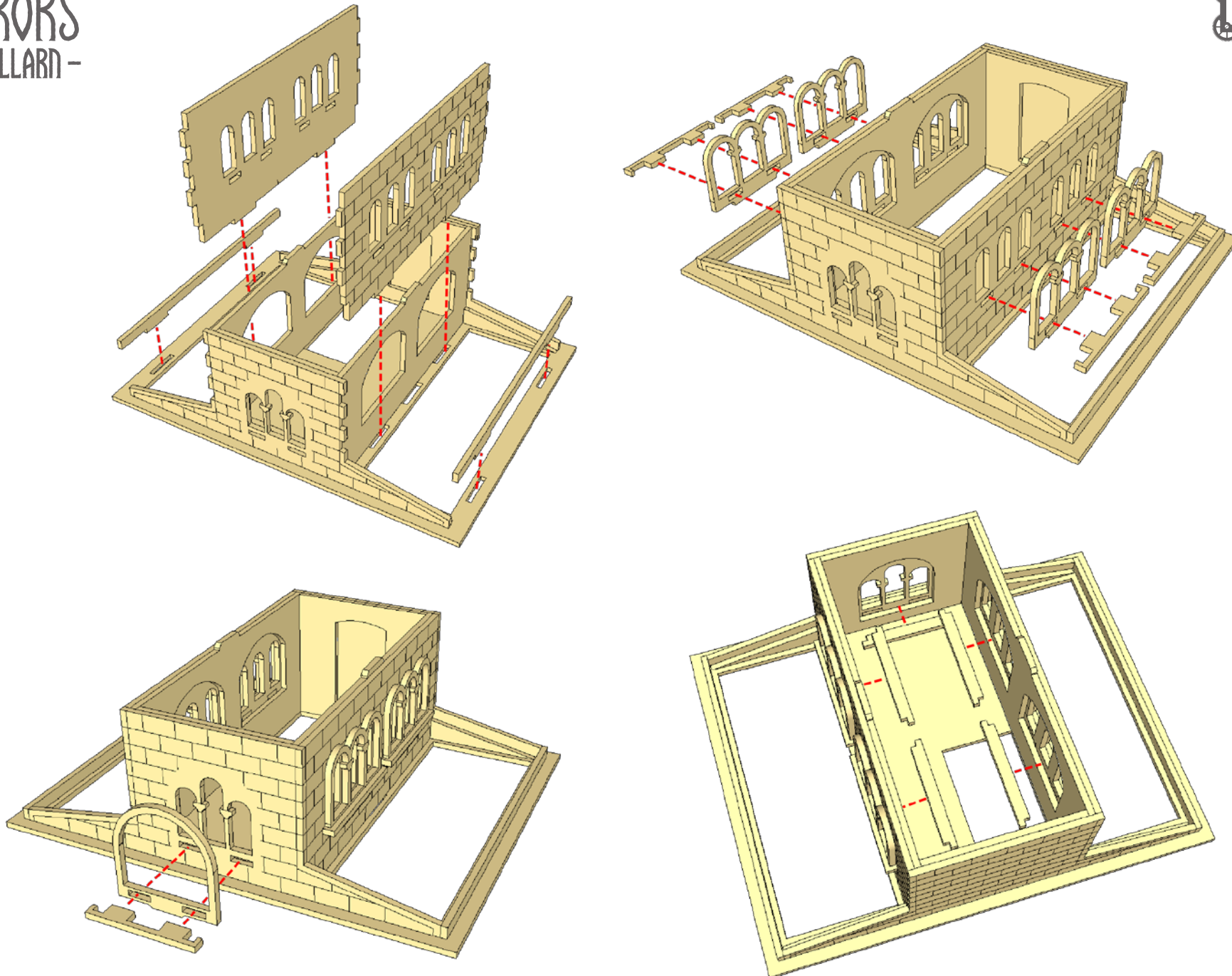
don't glue the door in! this will
alow it to sing open and closed.
You might find it easier to do
these steps after painting



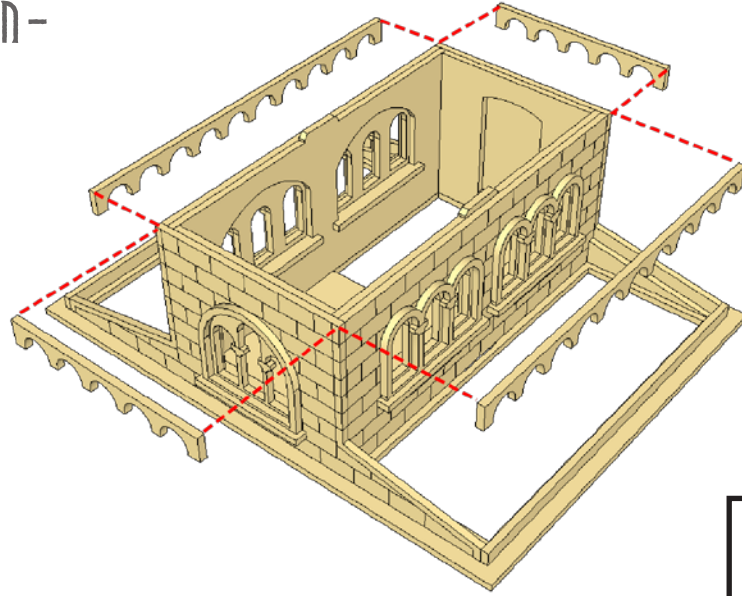
ELARIAN CHAPEL INSTRUCTIONS



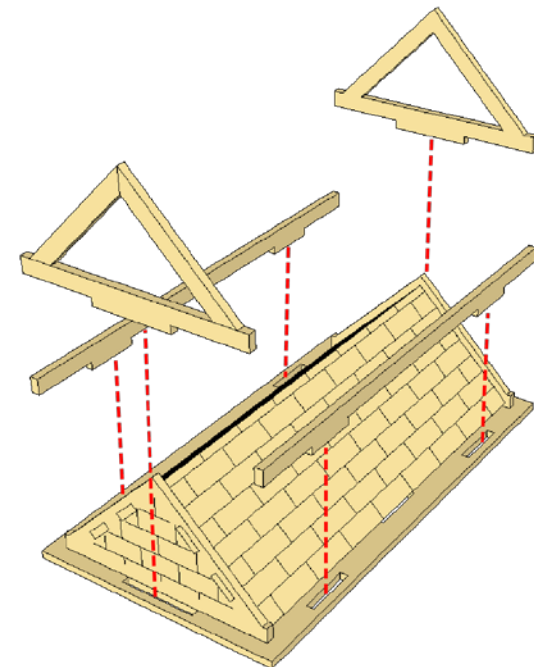
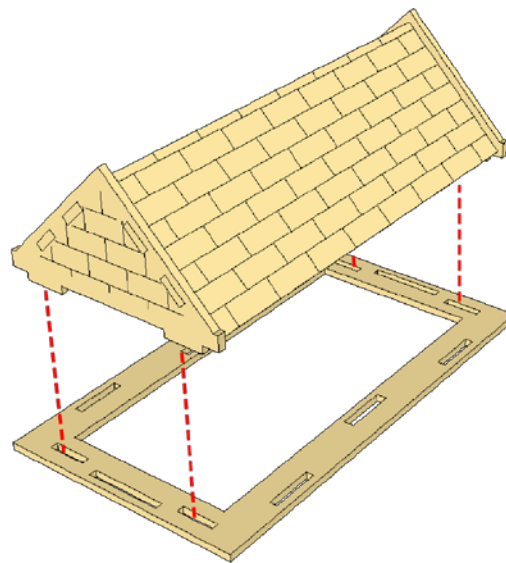
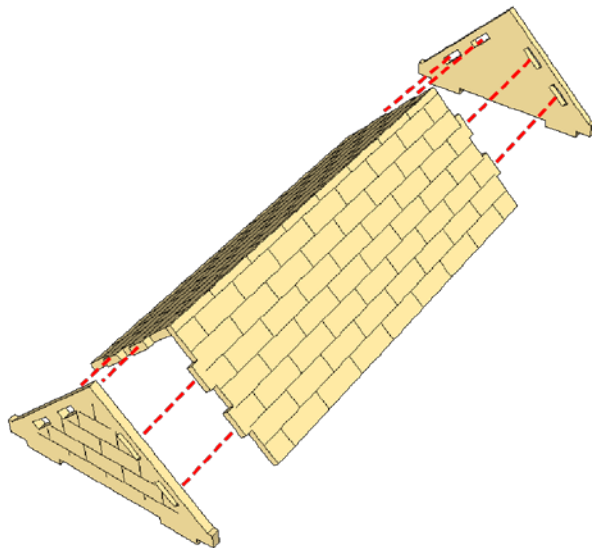
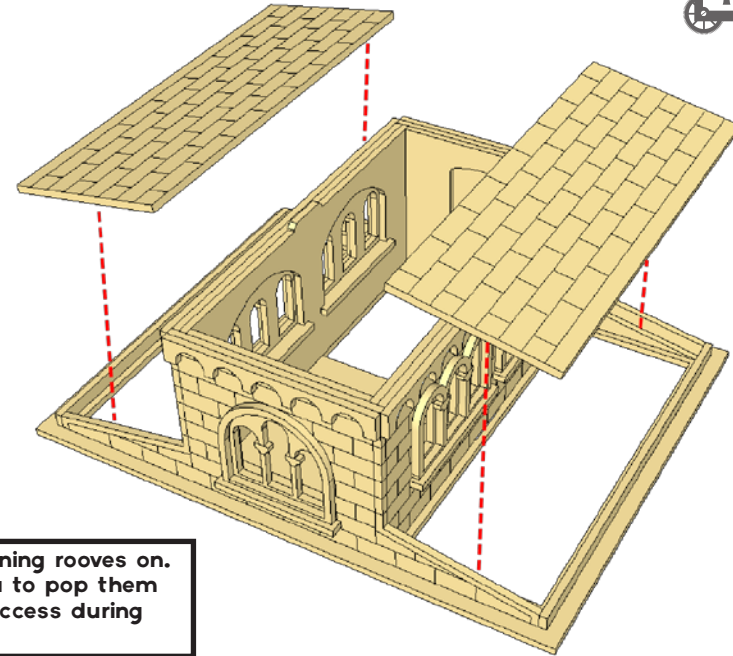
ELARIAN CHAPEL INSTRUCTIONS



ELARIAN CHAPEL INSTRUCTIONS



don't glue the awning rooves on.
This will allow you to pop them
out to allow for access during
gameplay.



ELARIAN CHAPEL INSTRUCTIONS

