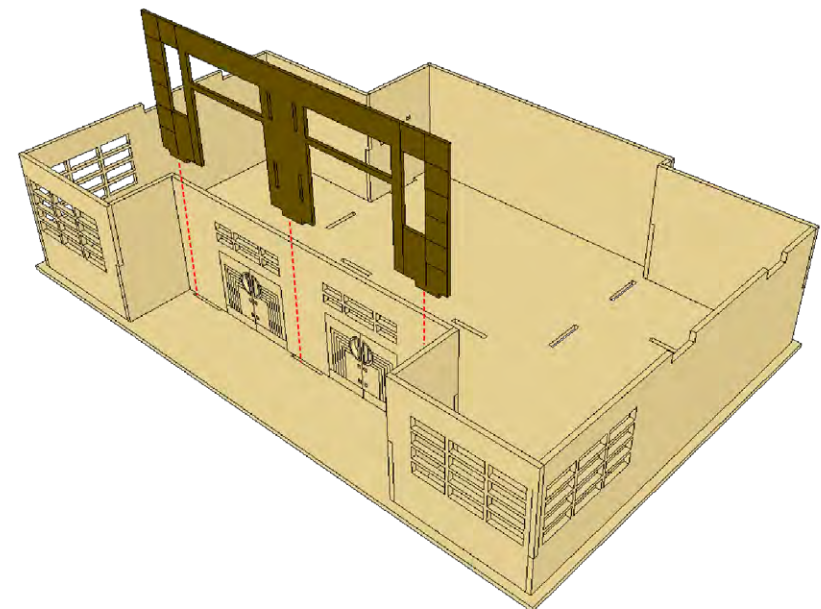
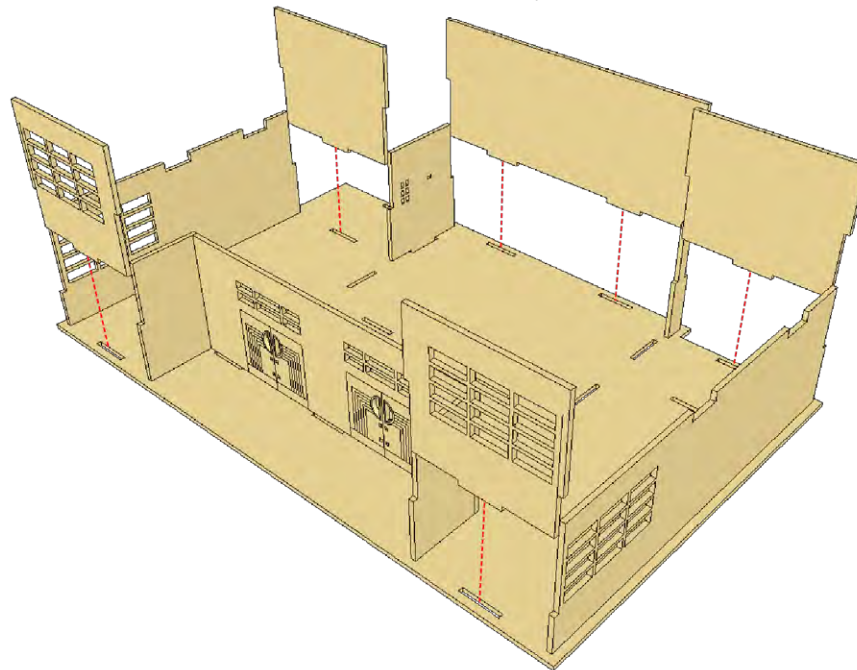
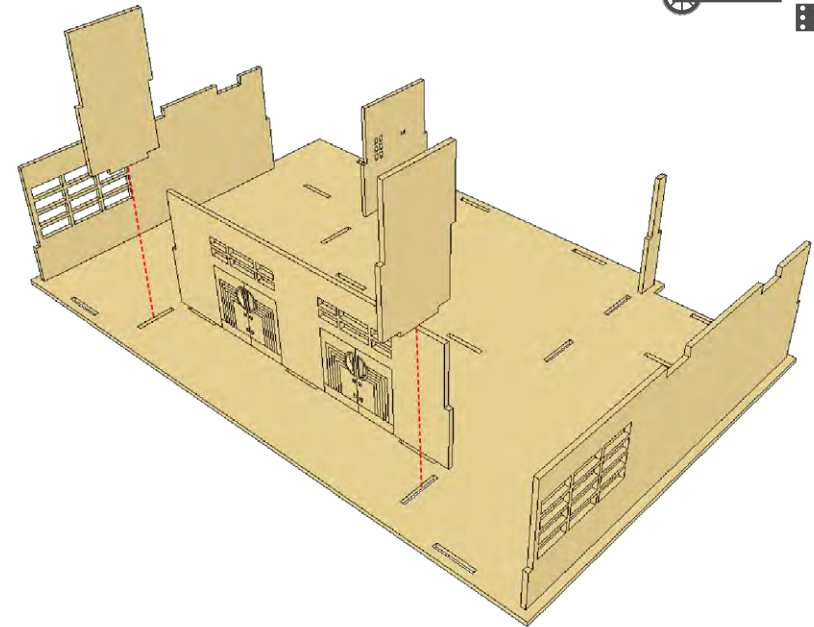
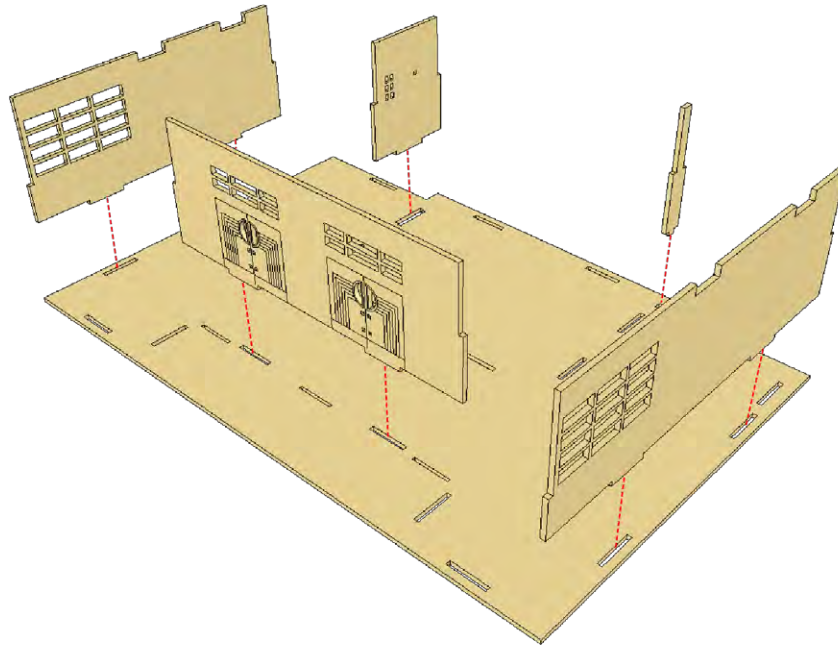
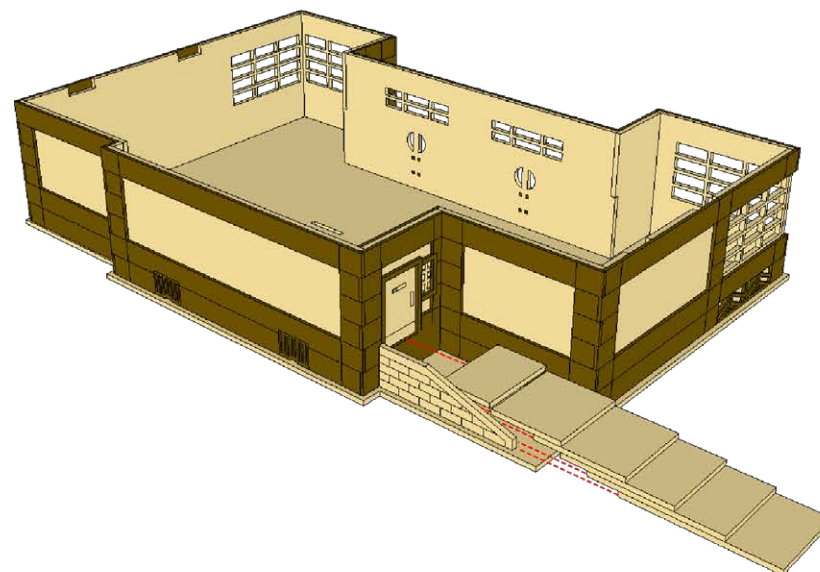
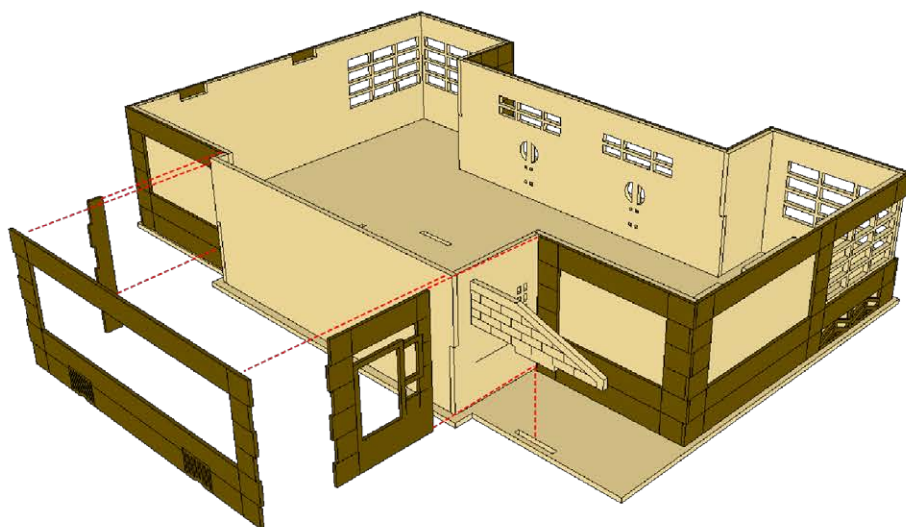
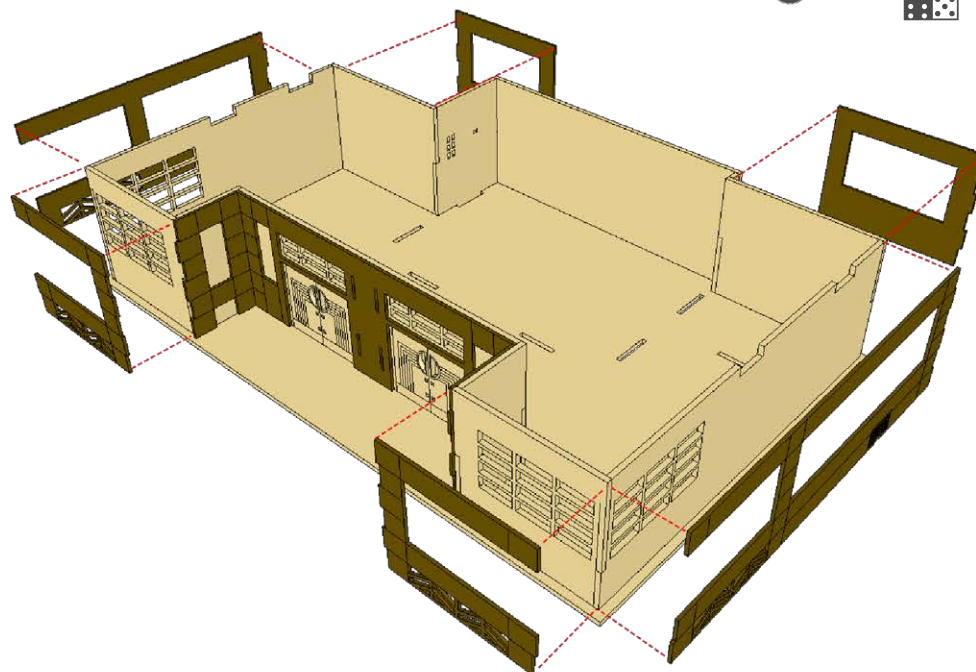
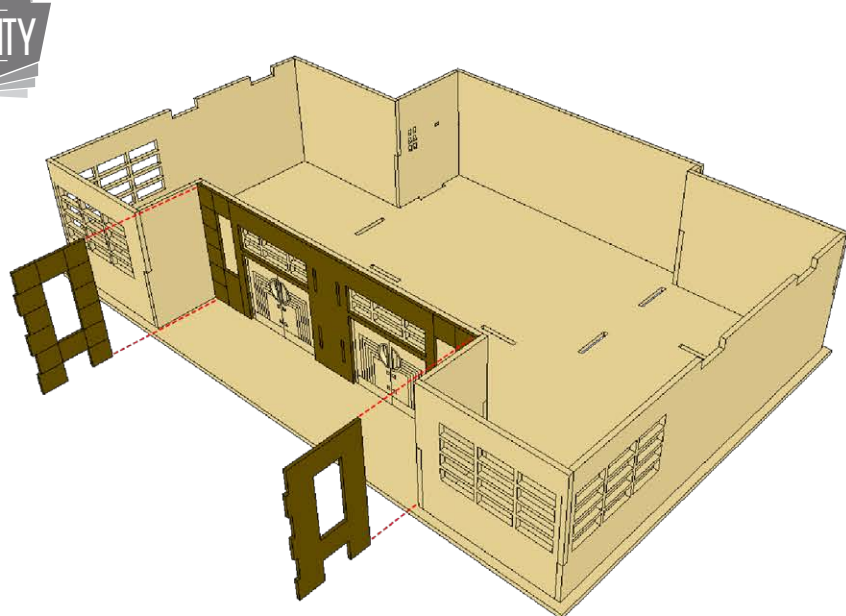


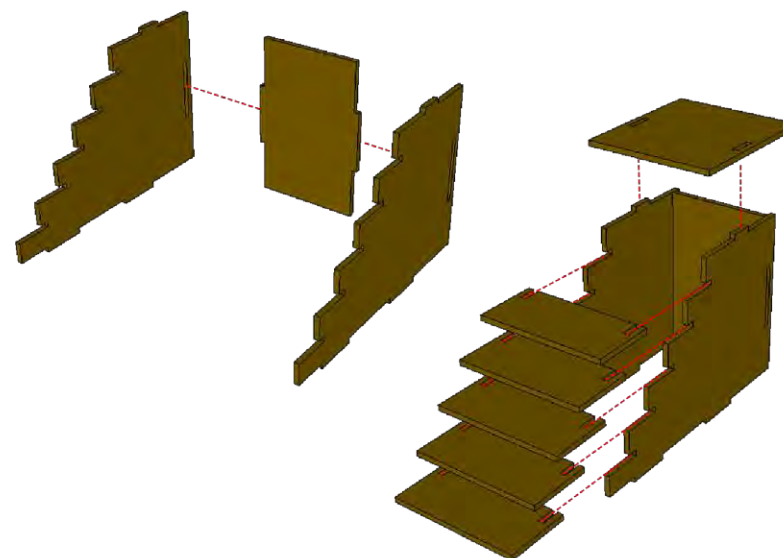
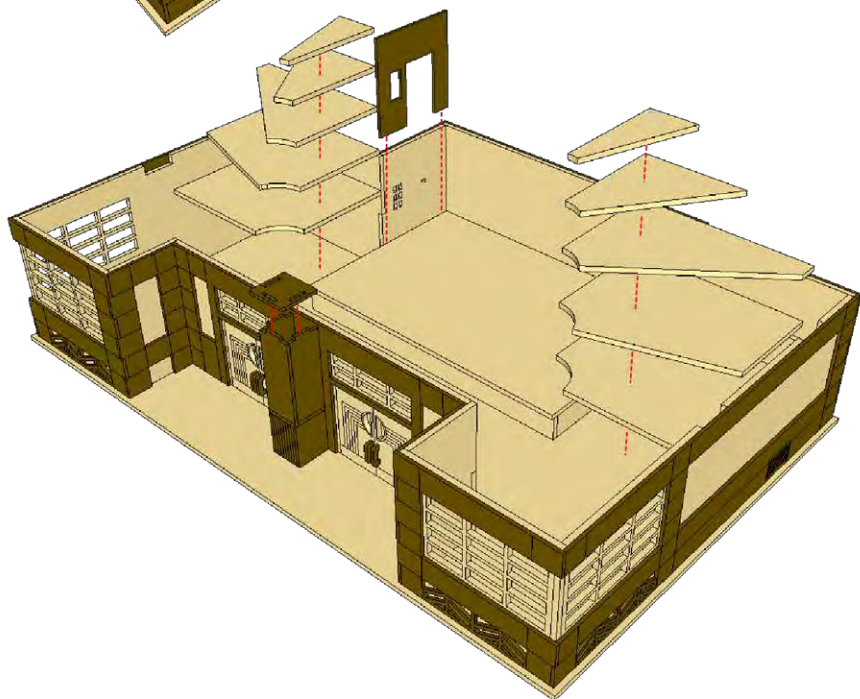
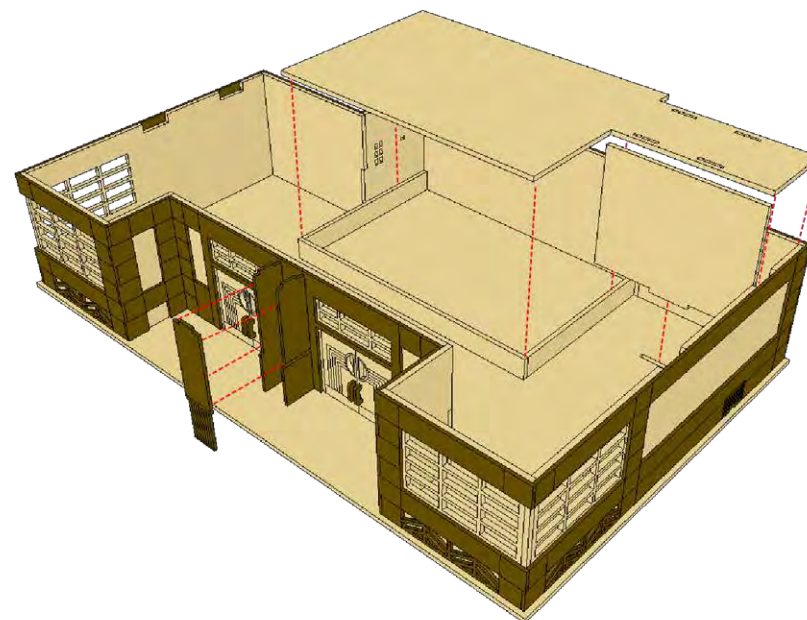
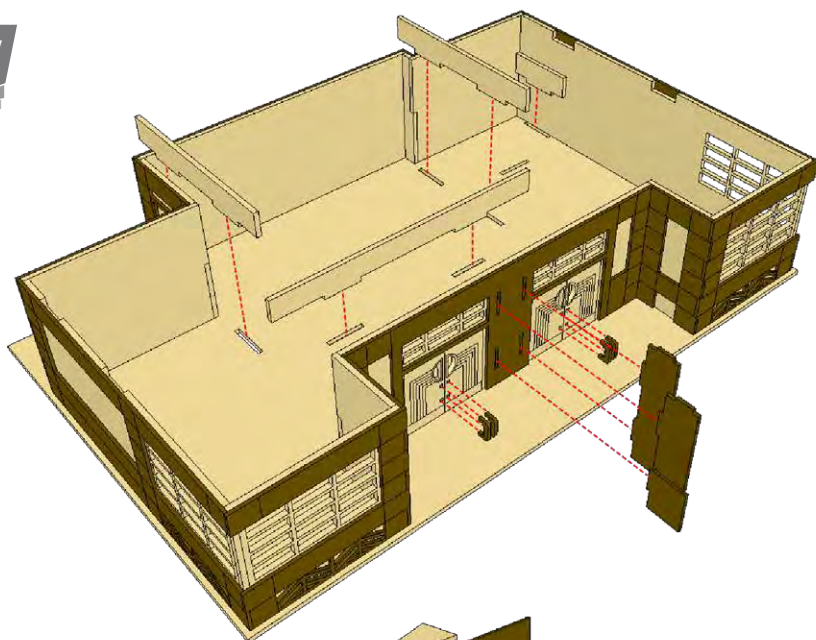
GLACIER LODGE ASSEMBLY INSTRUCTIONS



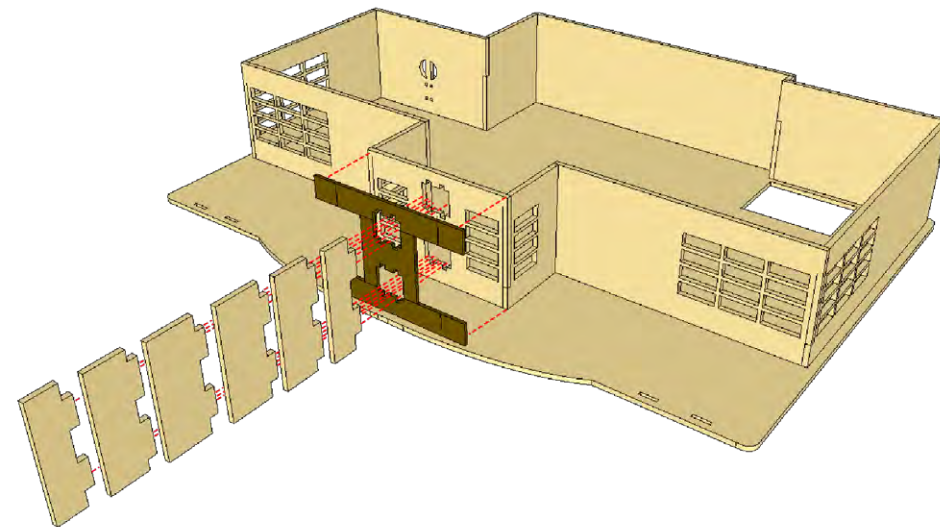
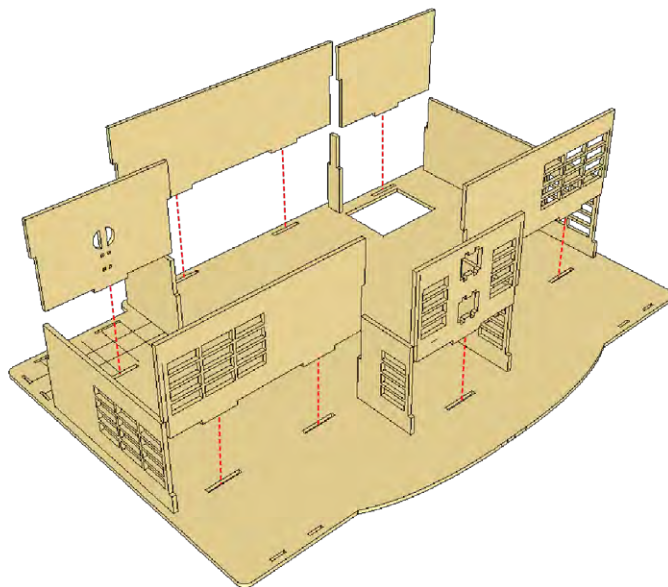
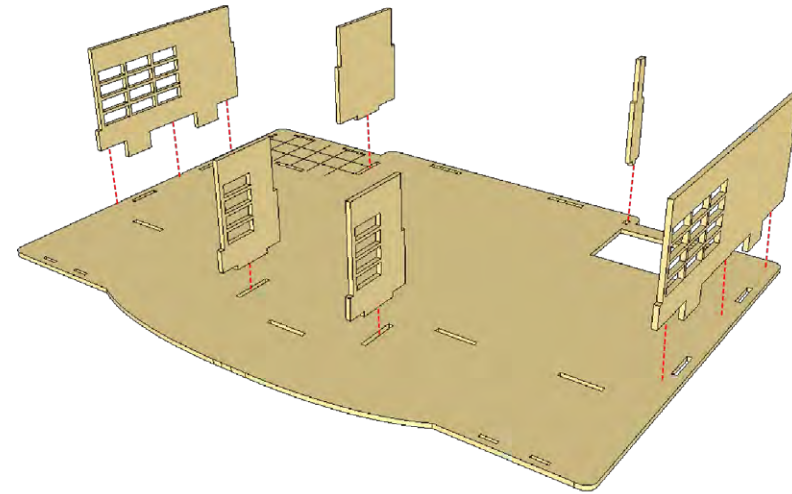
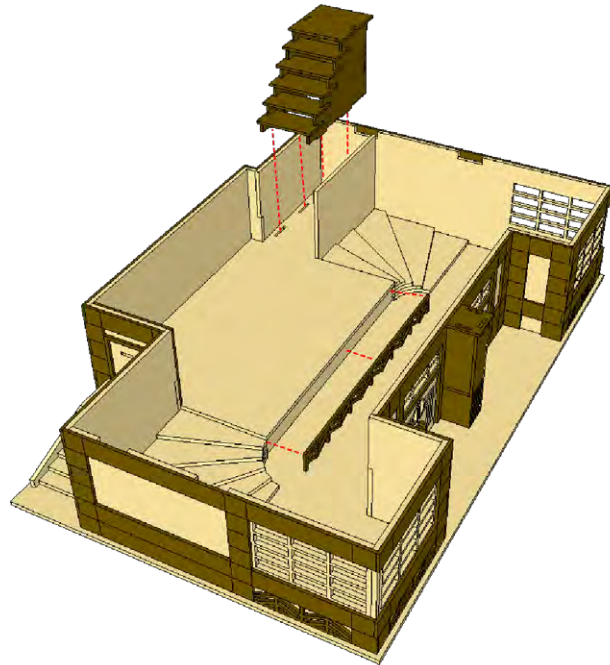
GLACIER LODGE ASSEMBLY INSTRUCTIONS



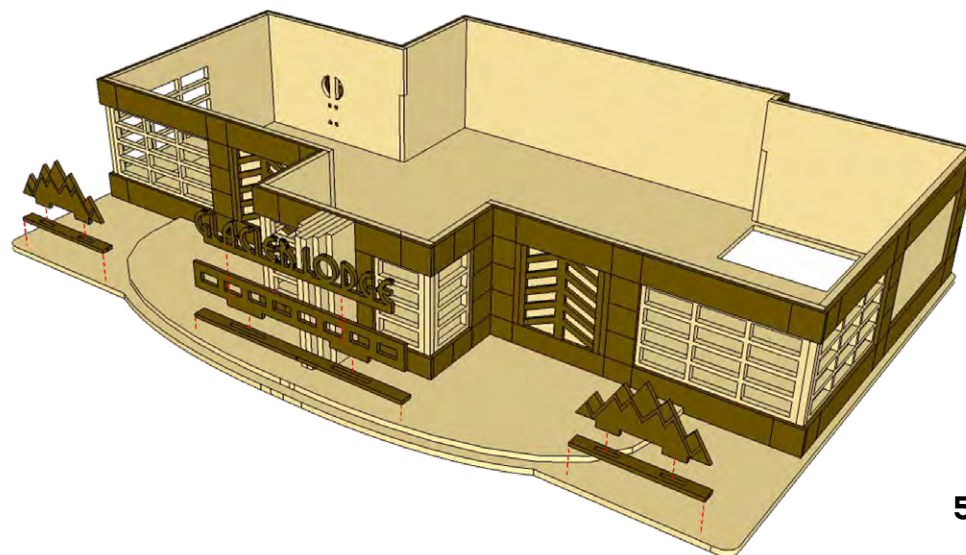
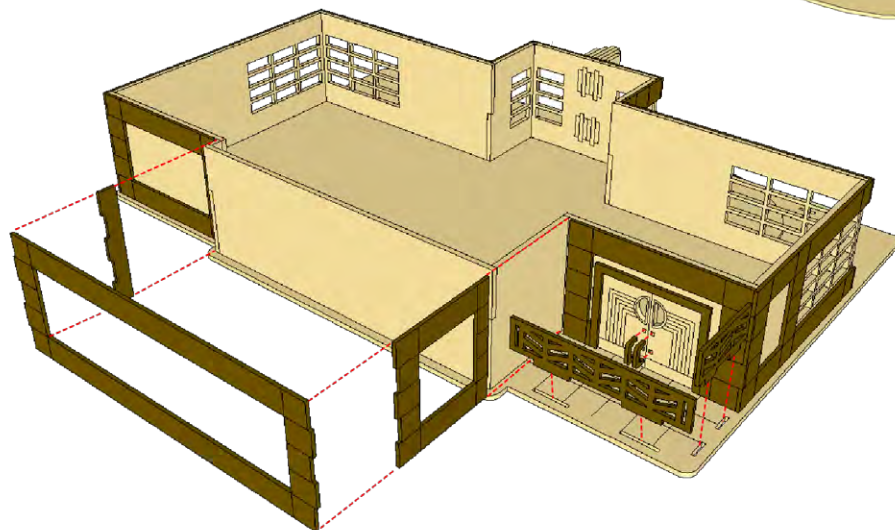
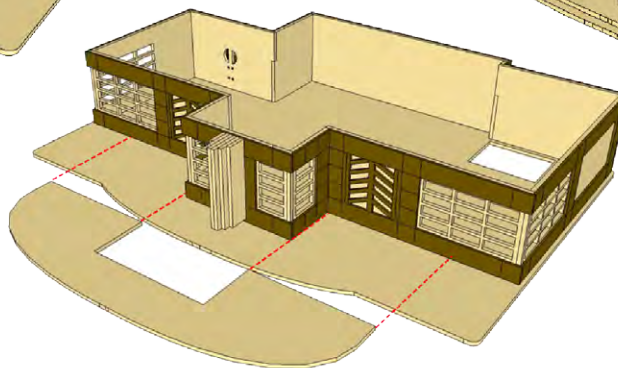
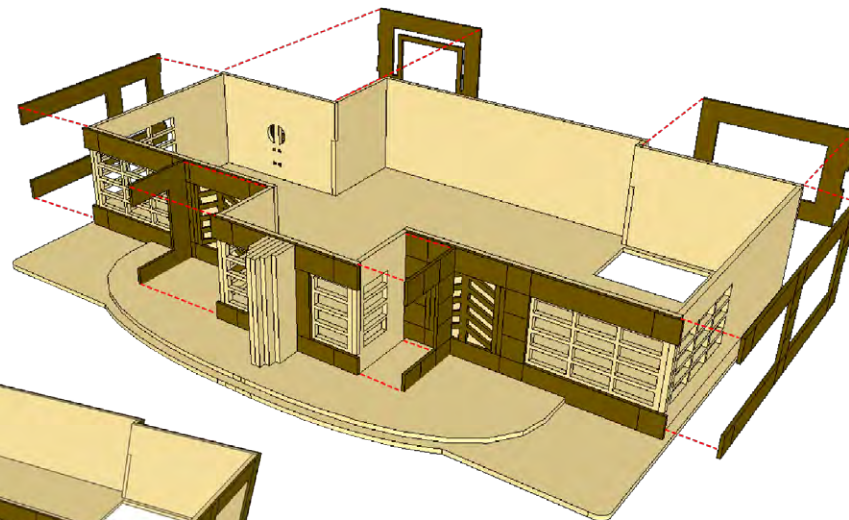
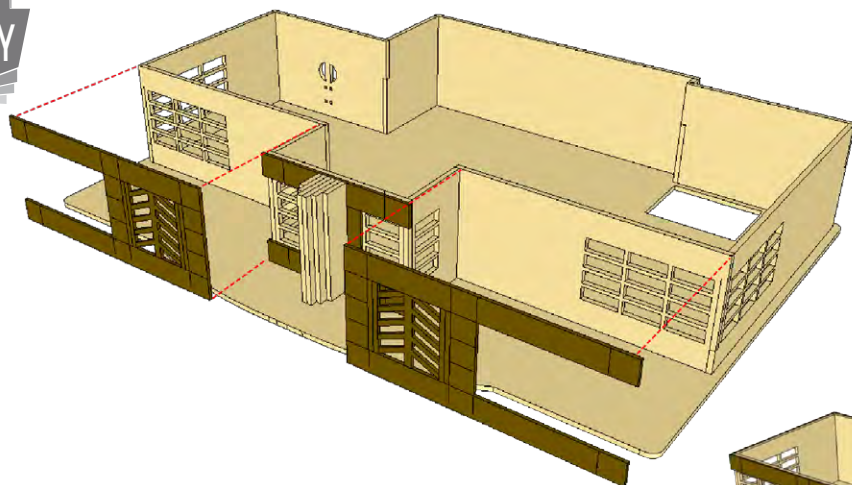
GLACIER LODGE ASSEMBLY INSTRUCTIONS



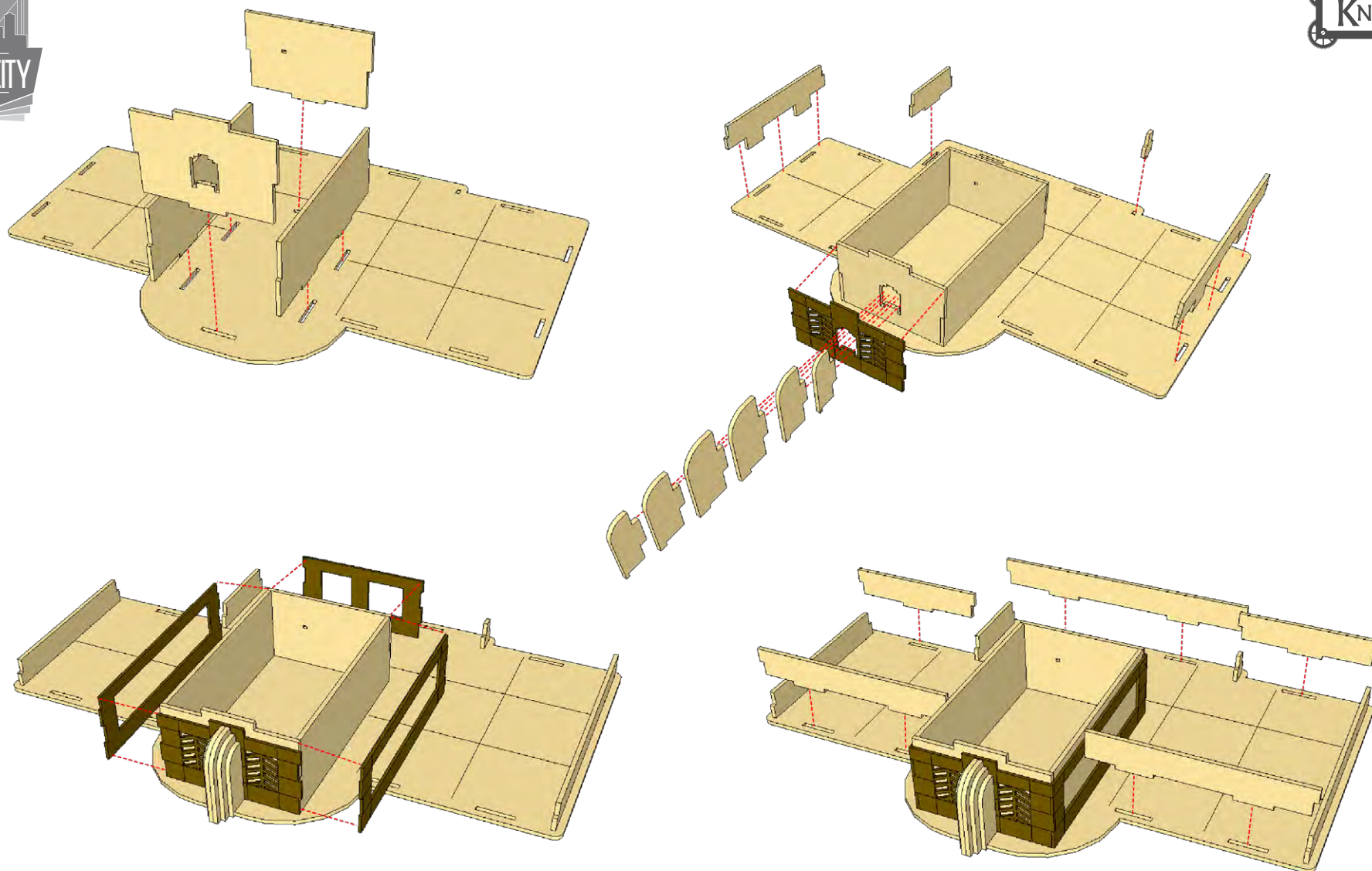
GLACIER LODGE ASSEMBLY INSTRUCTIONS



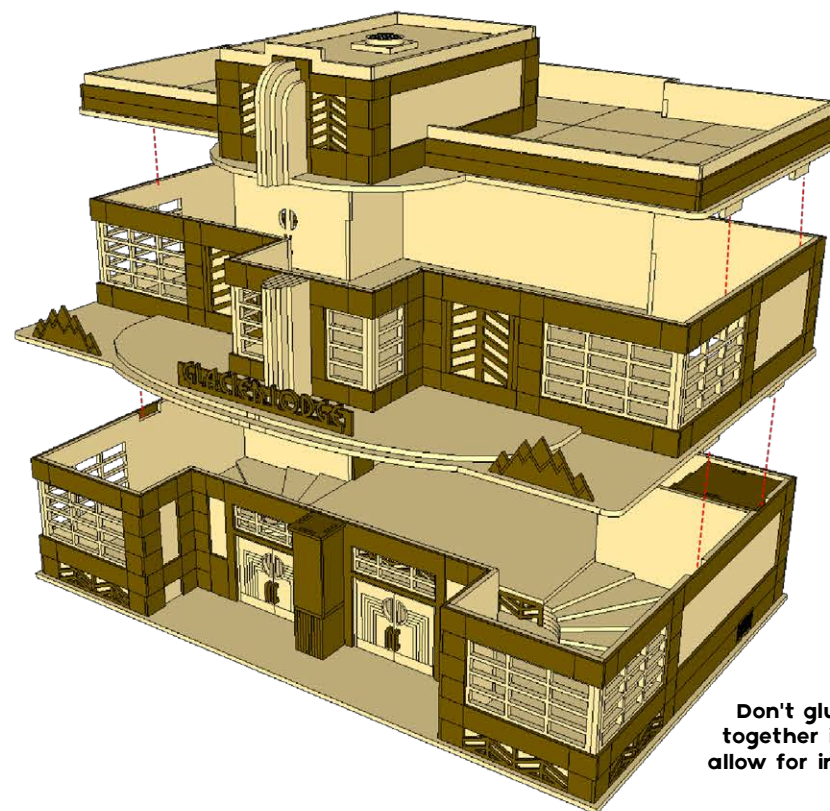
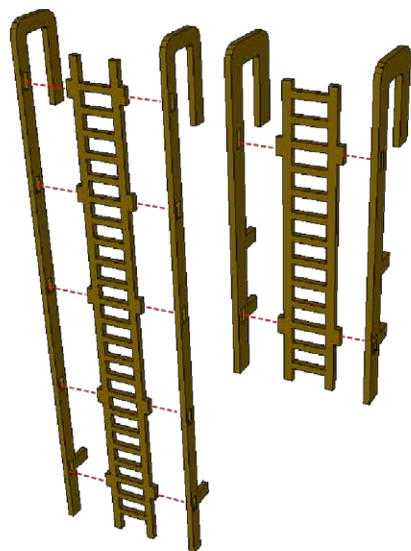
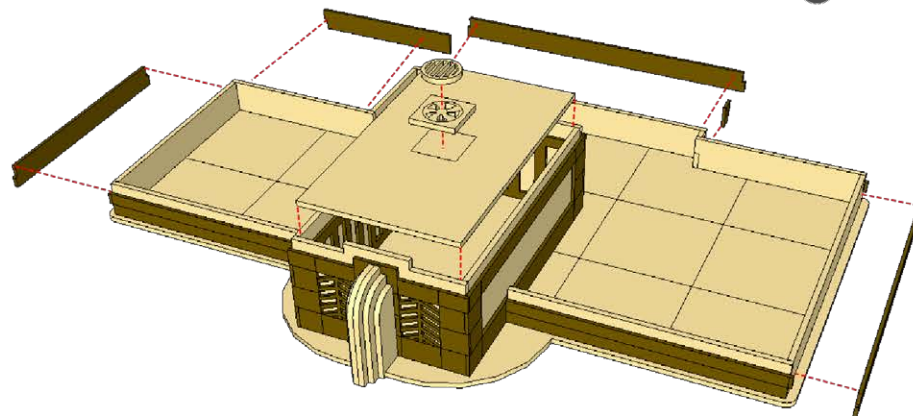
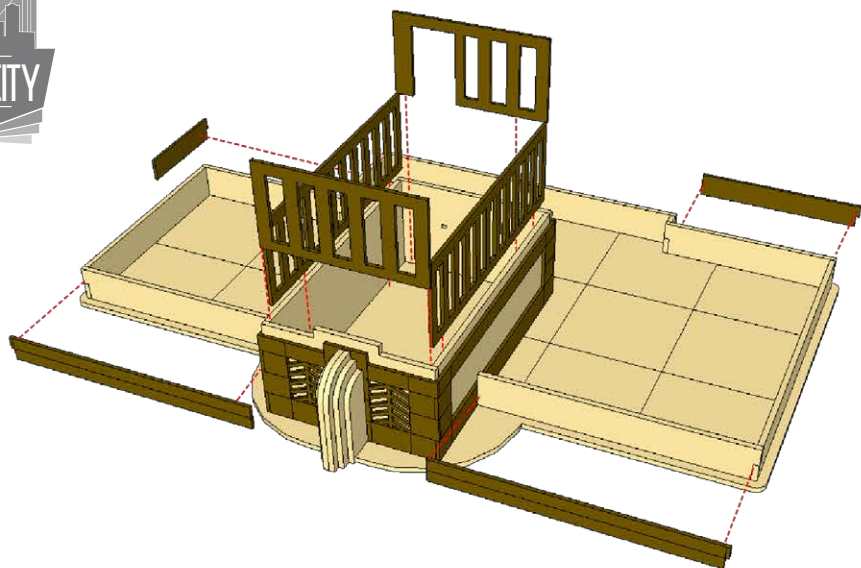
GLACIER LODGE ASSEMBLY INSTRUCTIONS



GLACIER LODGE ASSEMBLY INSTRUCTIONS

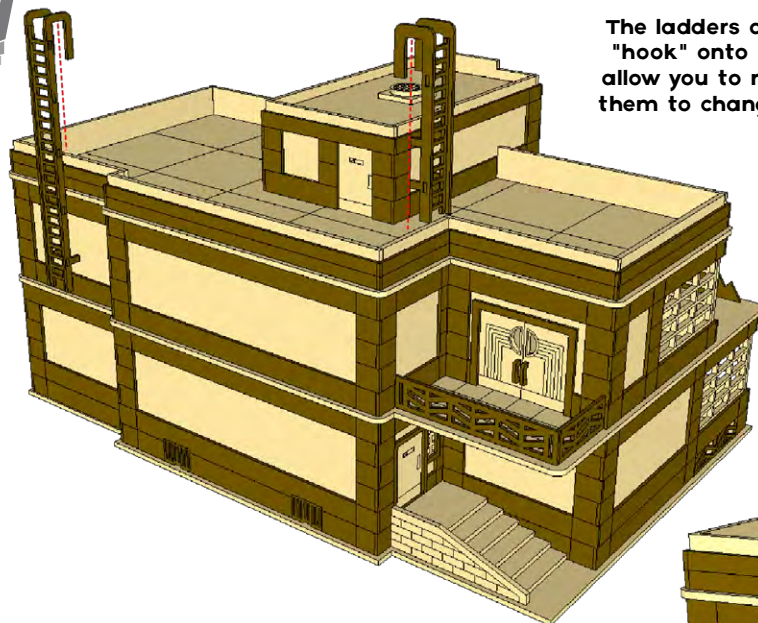


GLACIER LODGE ASSEMBLY INSTRUCTIONS



Don't glue your levels together if you want to allow for interior access :)

GLACIER LODGE ASSEMBLY INSTRUCTIONS



The ladders are designed to "hook" onto the building to allow you to move or remove them to change up gameplay

