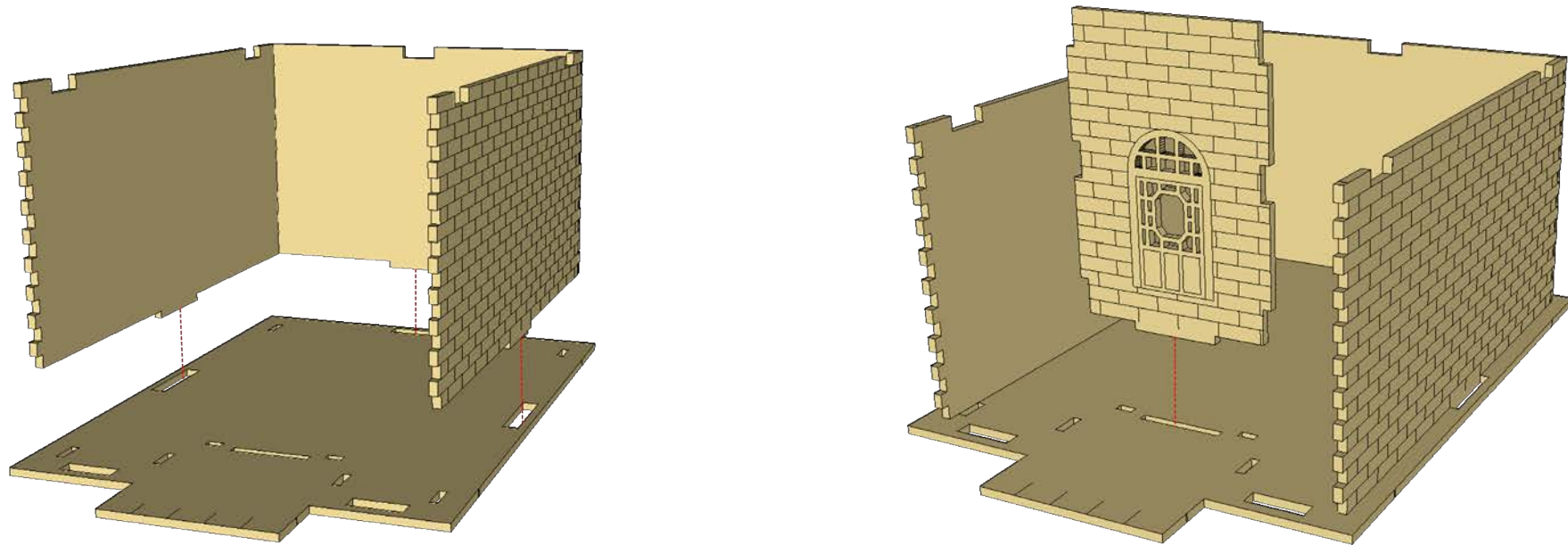
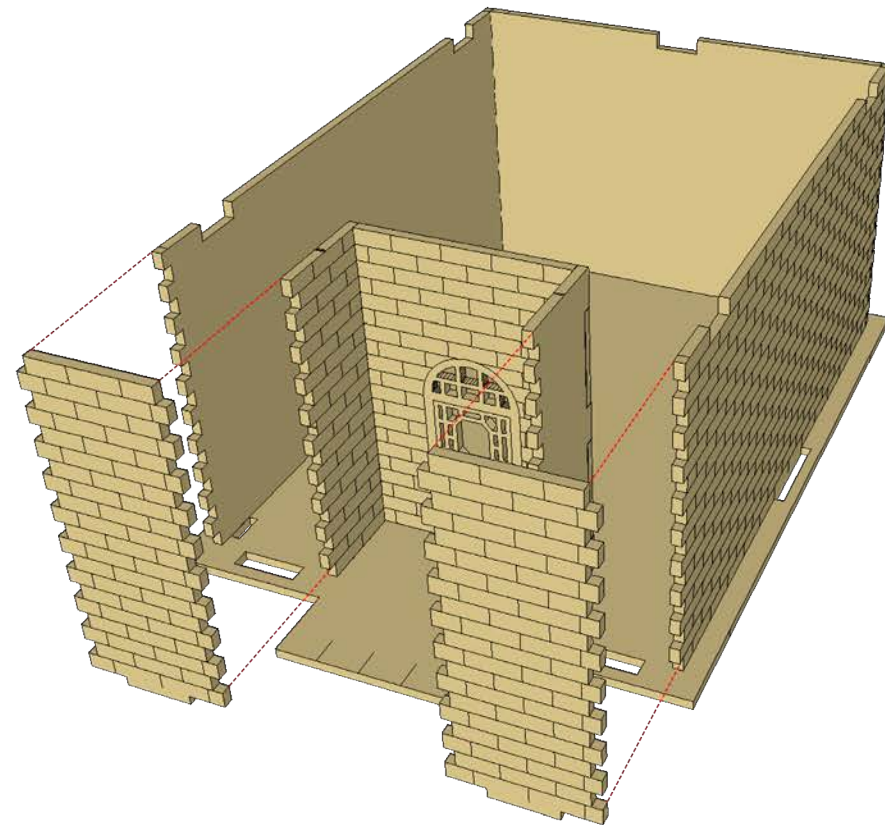
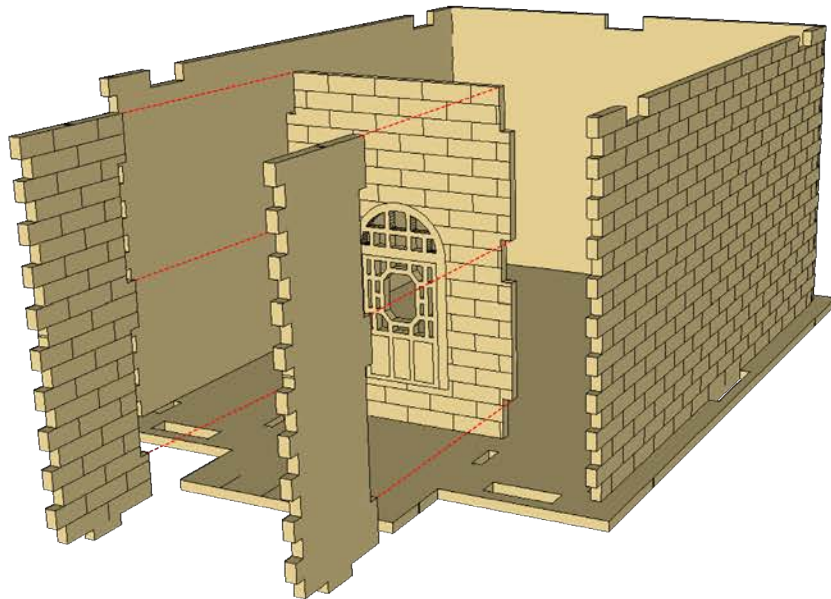


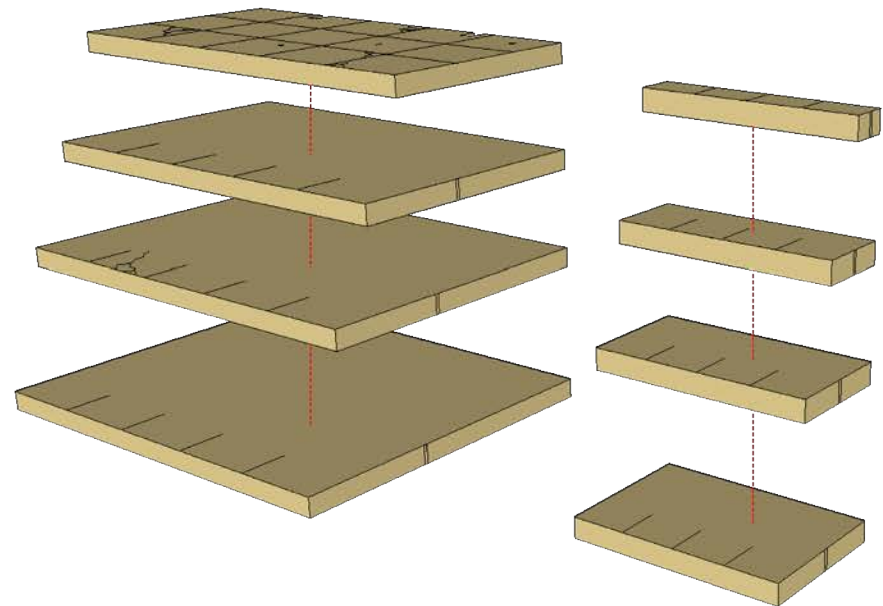
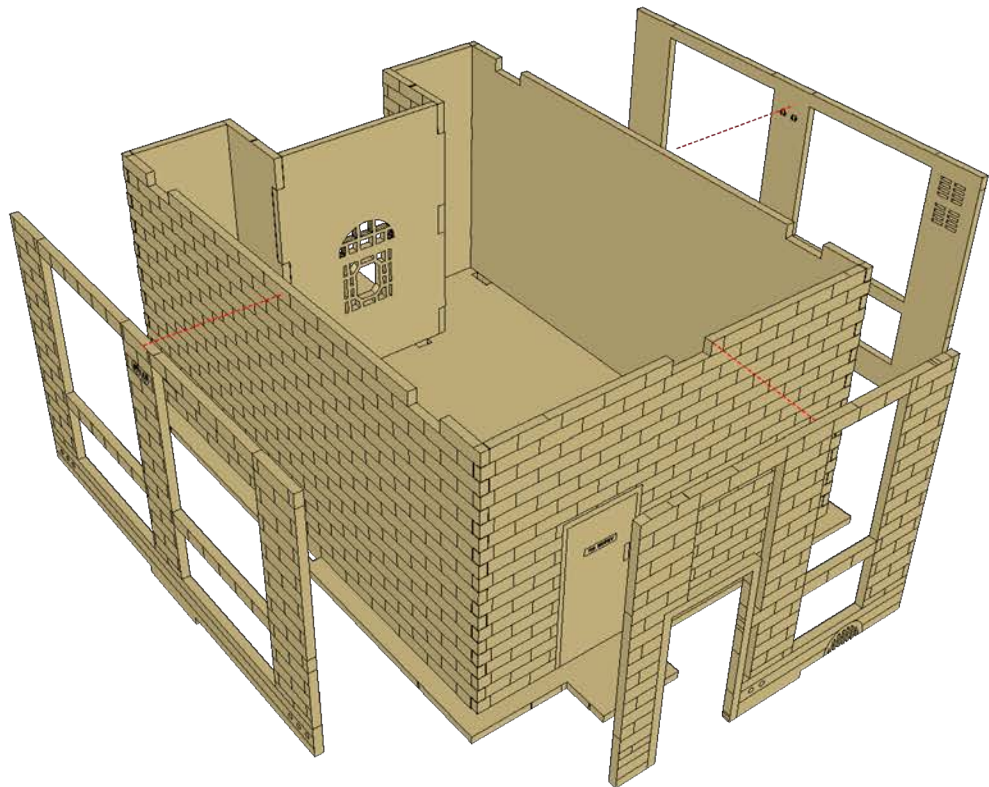
GOLDEN DRAGON INN ASSEMBLY INSTRUCTIONS



GOLDEN DRAGON INN ASSEMBLY INSTRUCTIONS

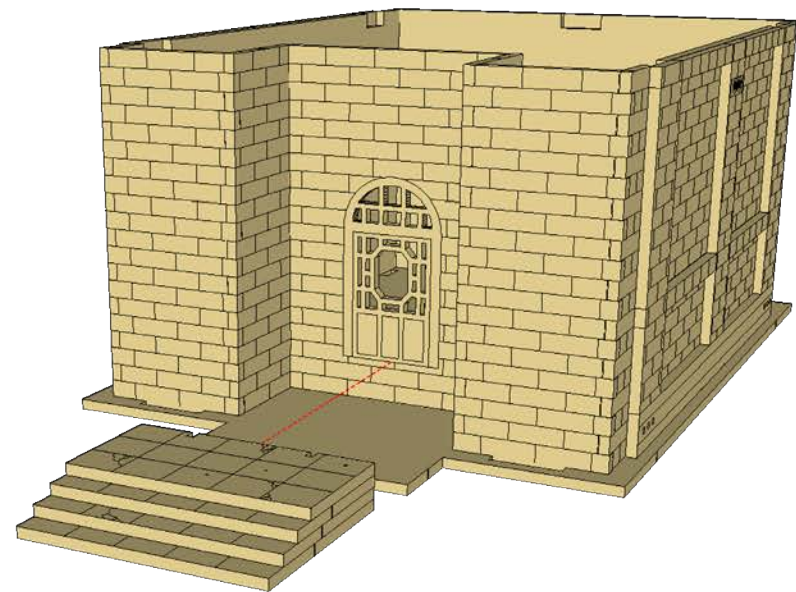
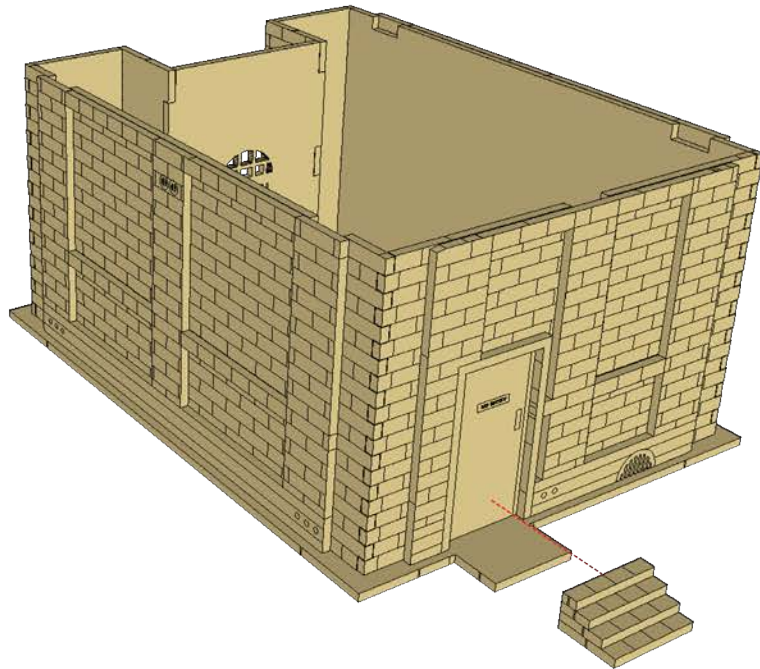


GOLDEN DRAGON INN ASSEMBLY INSTRUCTIONS



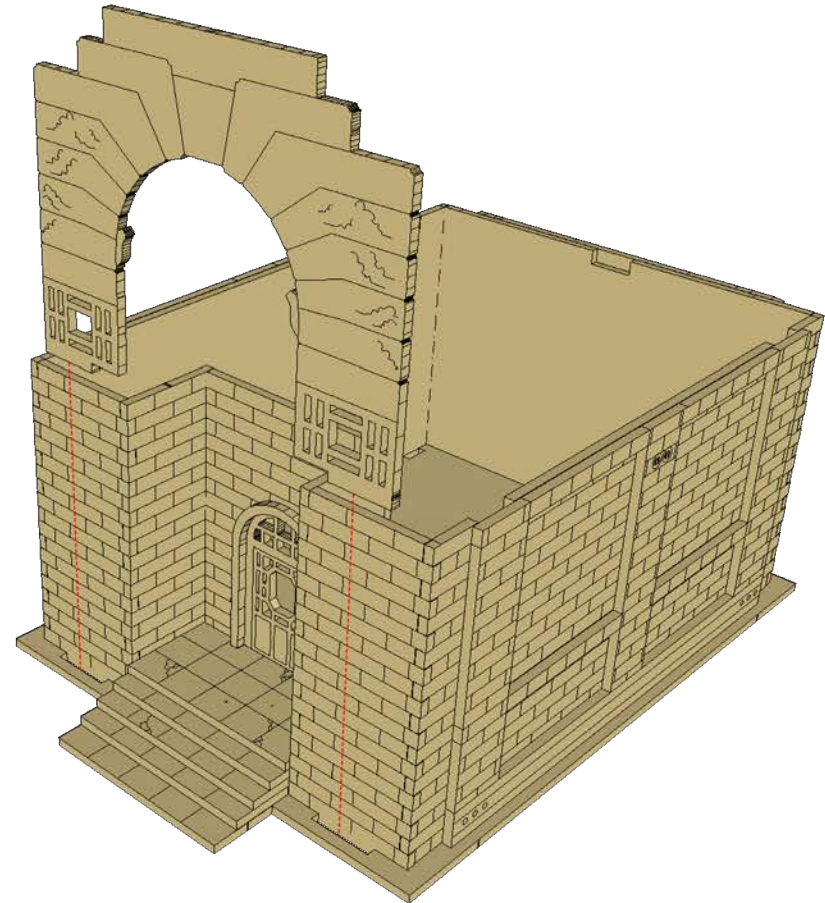
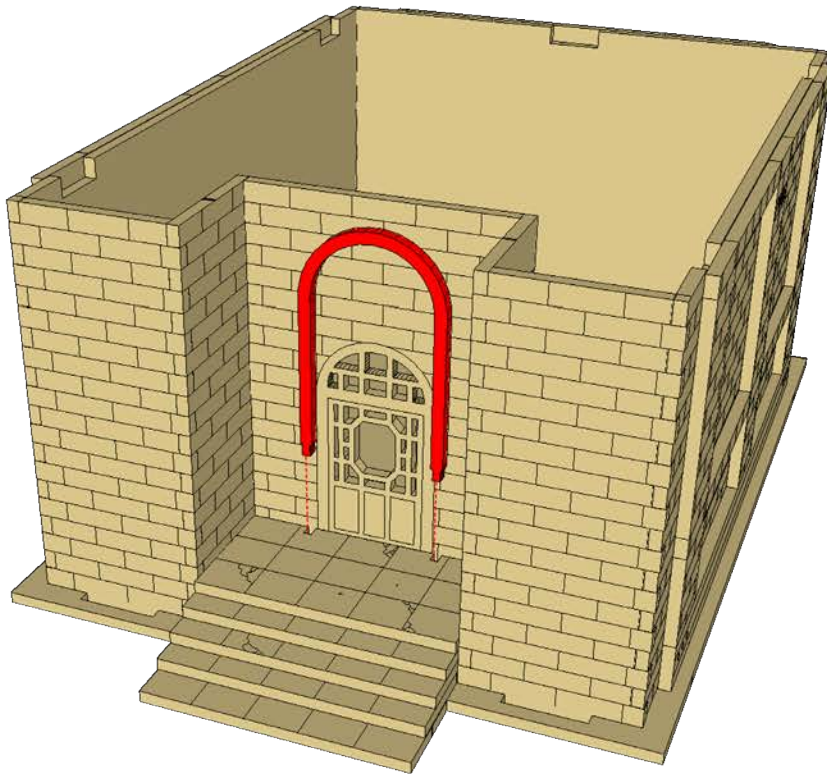
We've found it useful to
Apply glue to the facade pieces, then slot
them into the holes on the base piece.
Make sure you have the correct facade
piece for the correct side (as some side
have doors and corresponding facades).
Small clamps or large elastic bands also
help with securing the facade pieces
while they dry

GOLDEN DRAGON INN ASSEMBLY INSTRUCTIONS

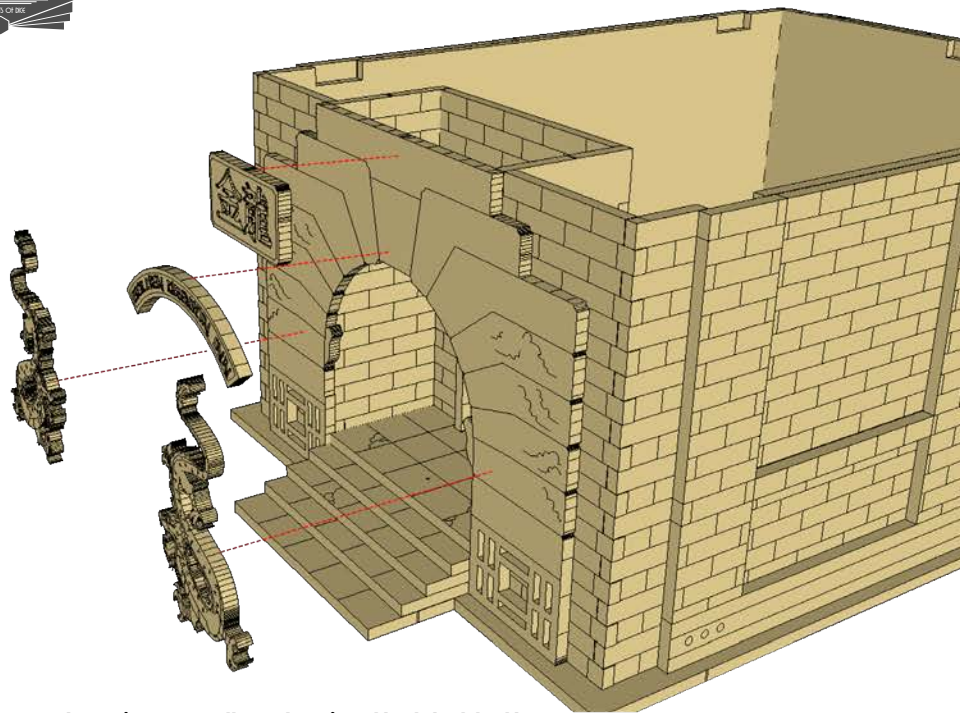


GOLDEN DRAGON INN ASSEMBLY INSTRUCTIONS

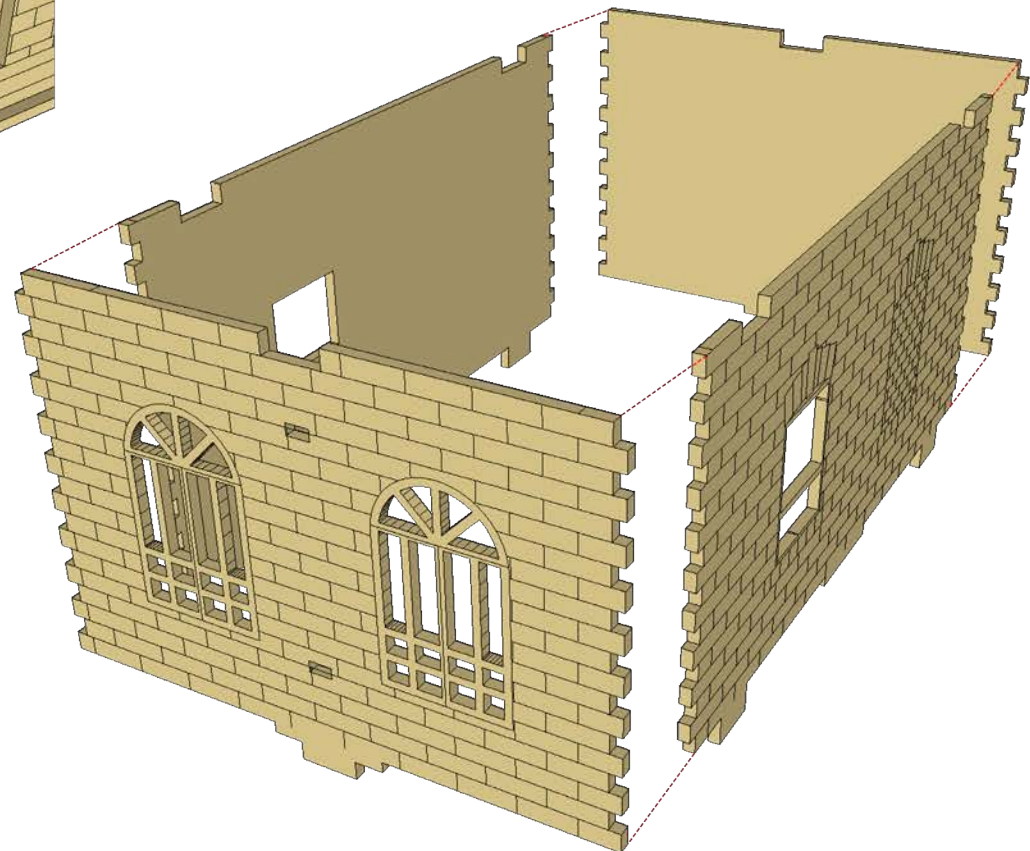
The door frame
plugs into a slot
on the steps



GOLDEN DRAGON INN ASSEMBLY INSTRUCTIONS

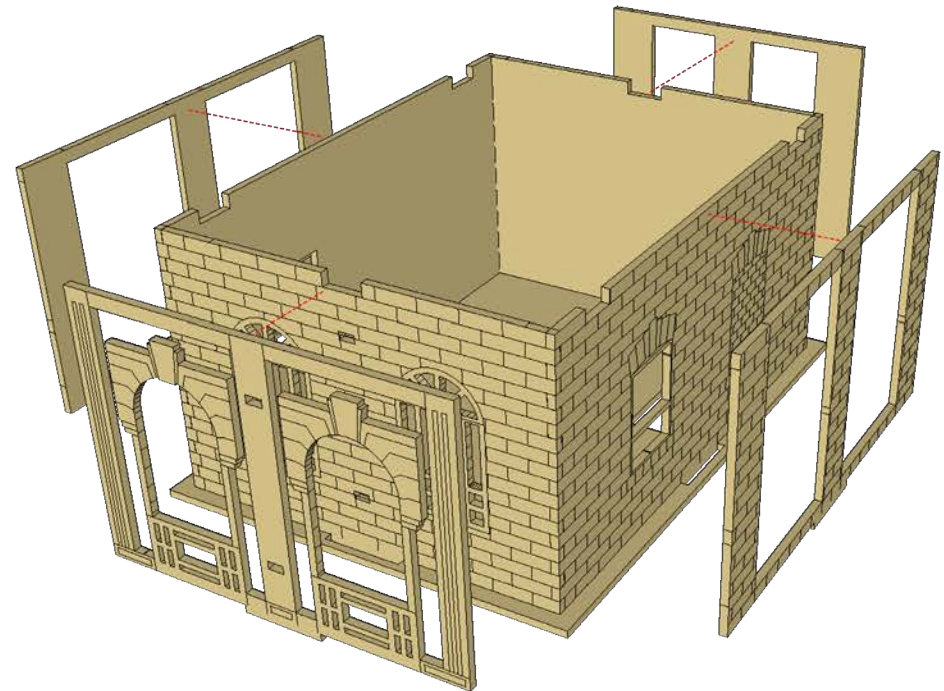
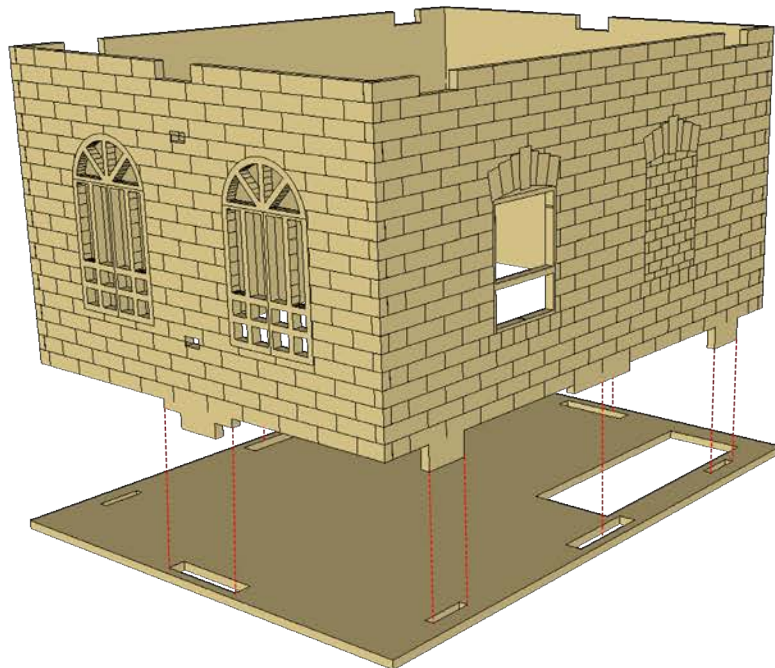


There is a small protrusion that holds the nose of the dragons. Dry fit the positions of the signs and dragons to make sure they are in the correct positions

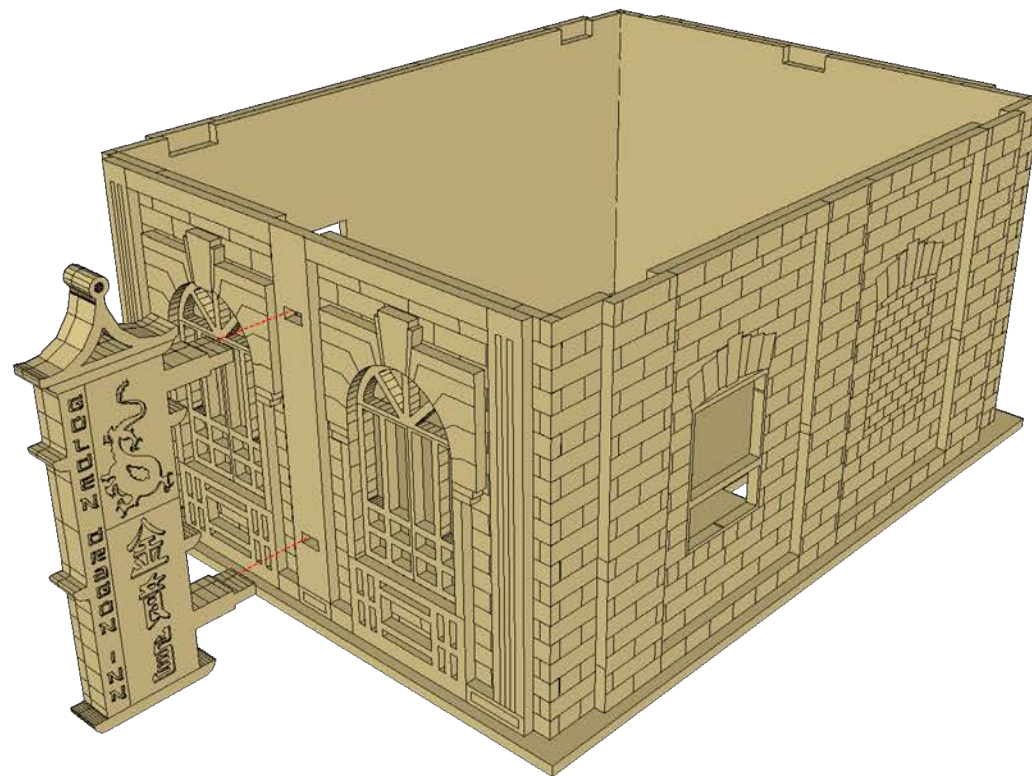
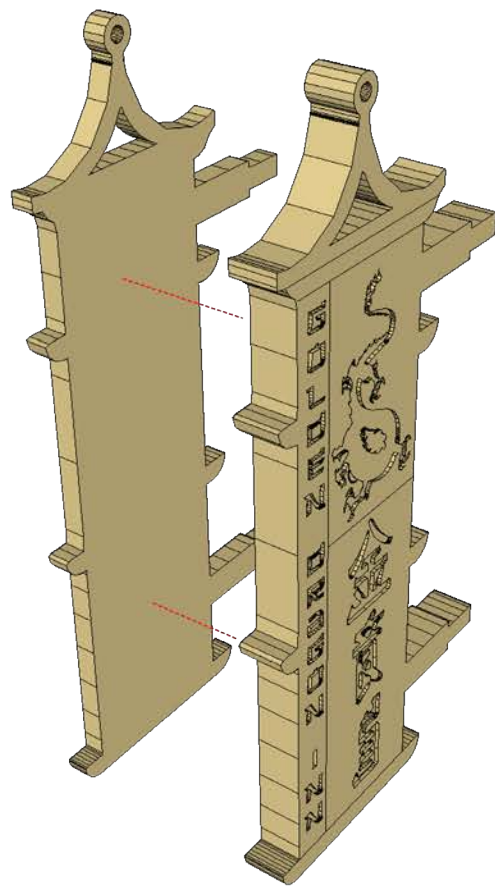


GOLDEN DRAGON INN ASSEMBLY INSTRUCTIONS

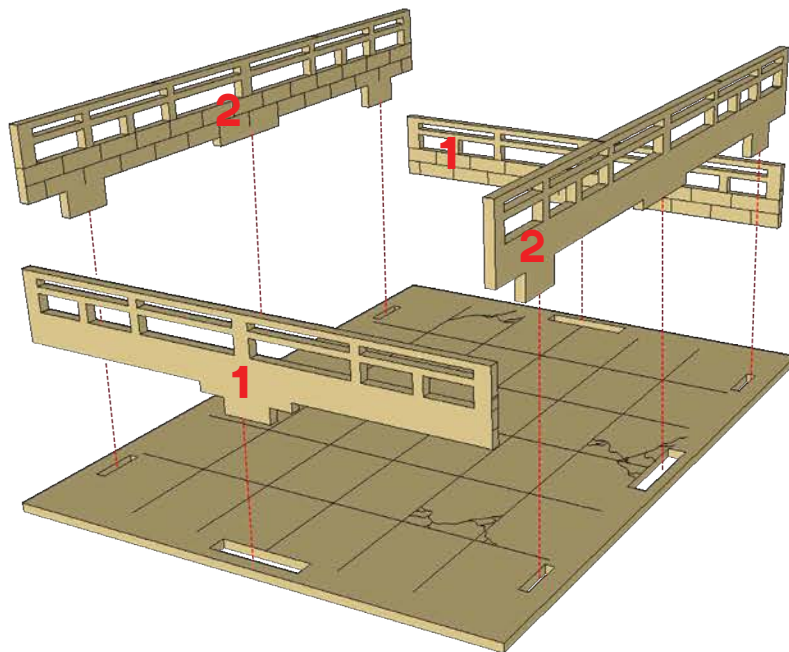
The pegs extend through the base piece to form lugs for locking into the first floor



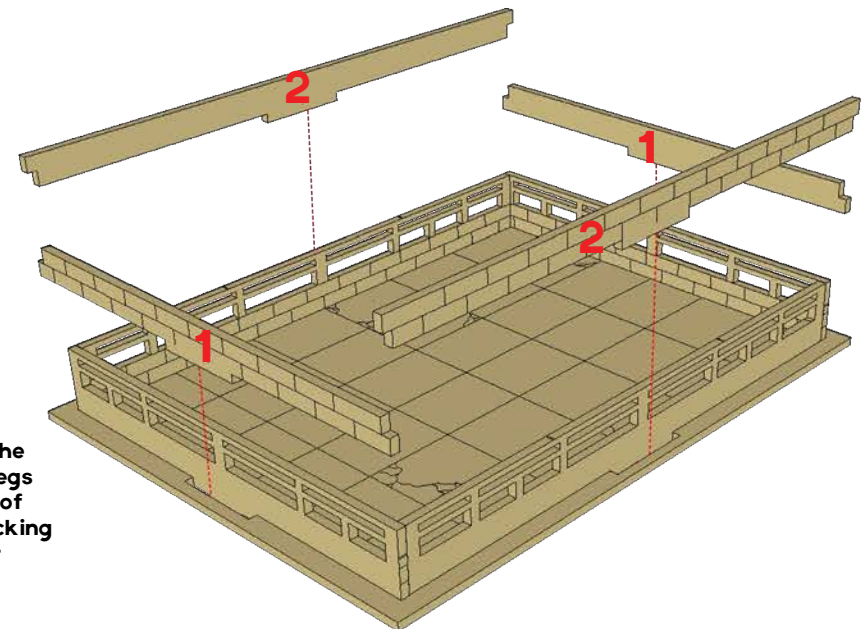
GOLDEN DRAGON INN ASSEMBLY INSTRUCTIONS



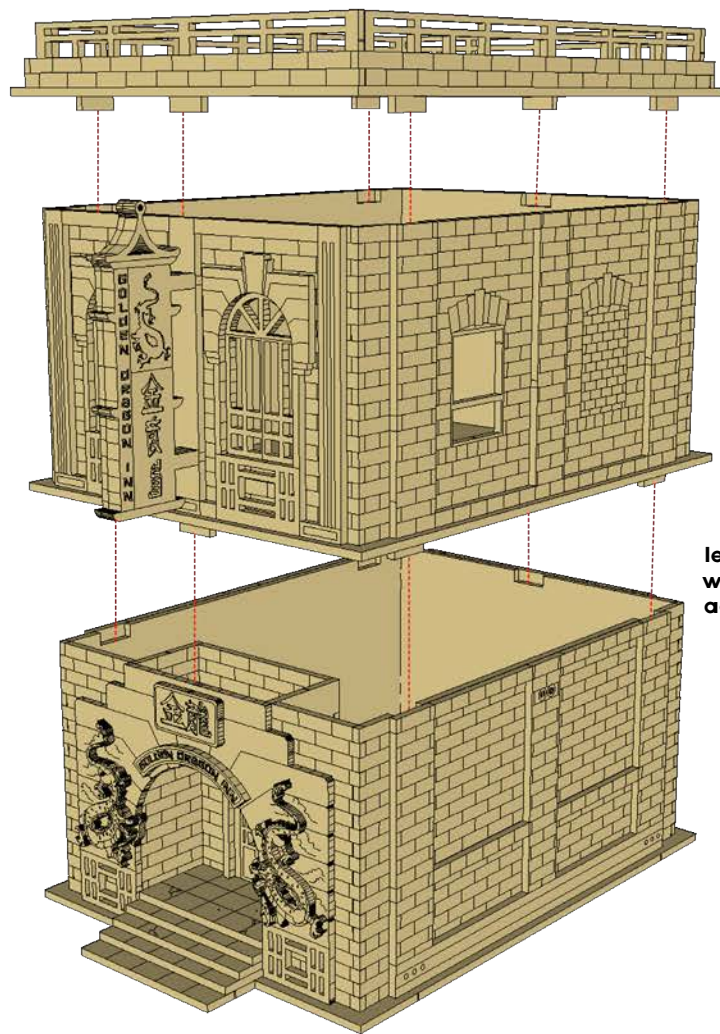
Make sure the textured side of the inner roof trim pieces are pointing inward



Glue the roof trim in the numbered order. The pegs extend through the roof piece to form lugs for locking into the second floor



GOLDEN DRAGON INN ASSEMBLY INSTRUCTIONS



Don't glue your levels in place, you want to be able to access the interior

