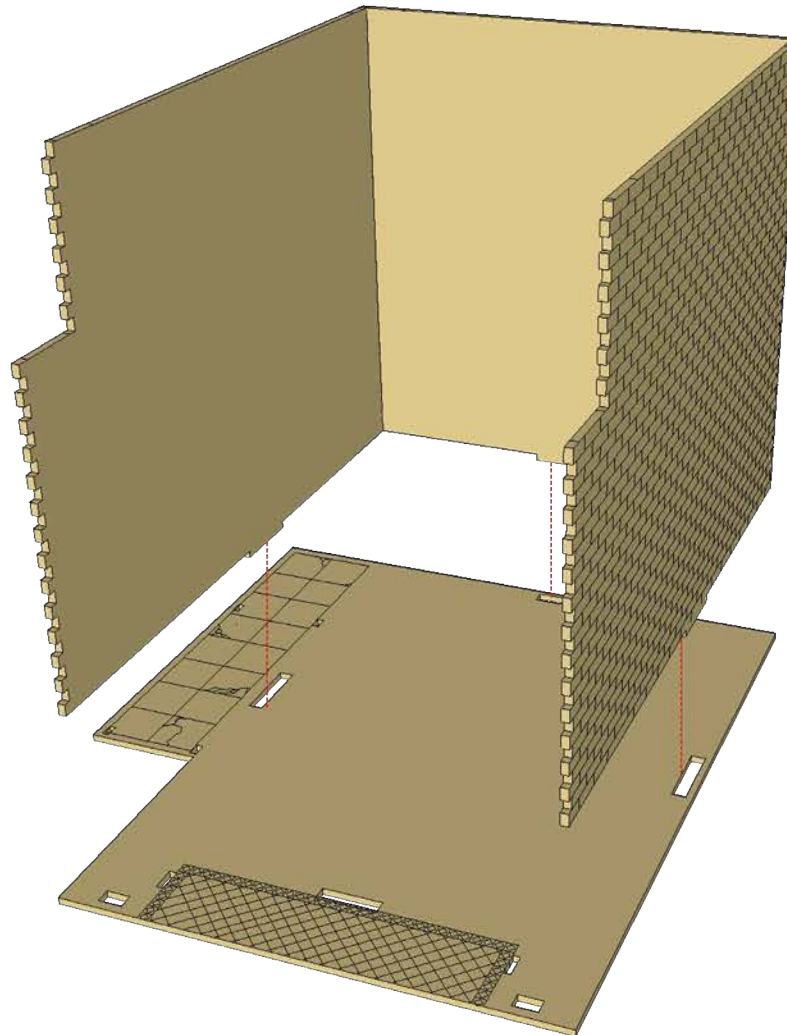




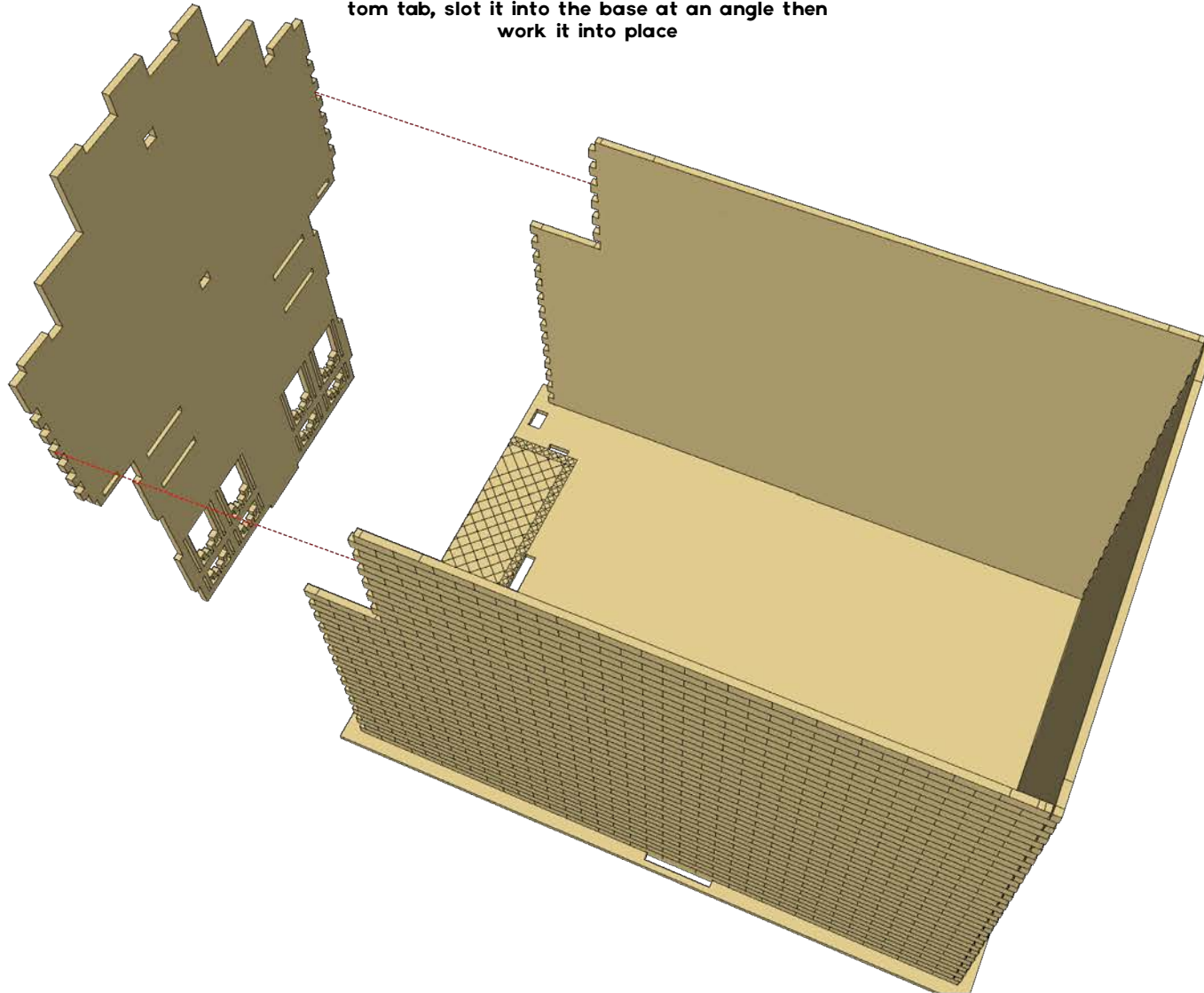
HARMONIC THEATRE ASSEMBLY INSTRUCTIONS



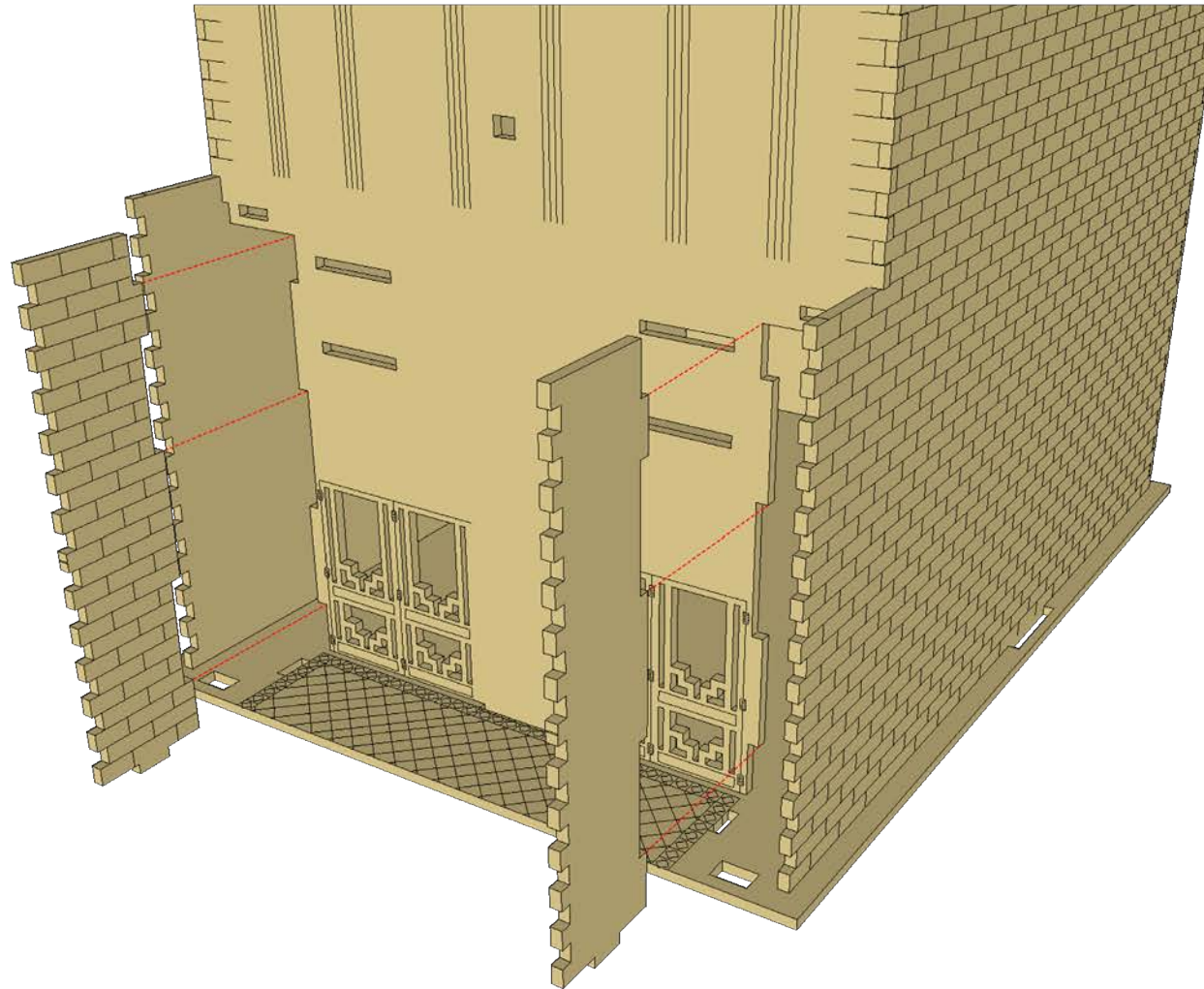
We have found that a large elastic band helps in holding the building together at this stage for drying

HARMONIC THEATRE ASSEMBLY INSTRUCTIONS

This front wall can be a bit tricky to get into place. We've found that starting with the bottom tab, slot it into the base at an angle then work it into place

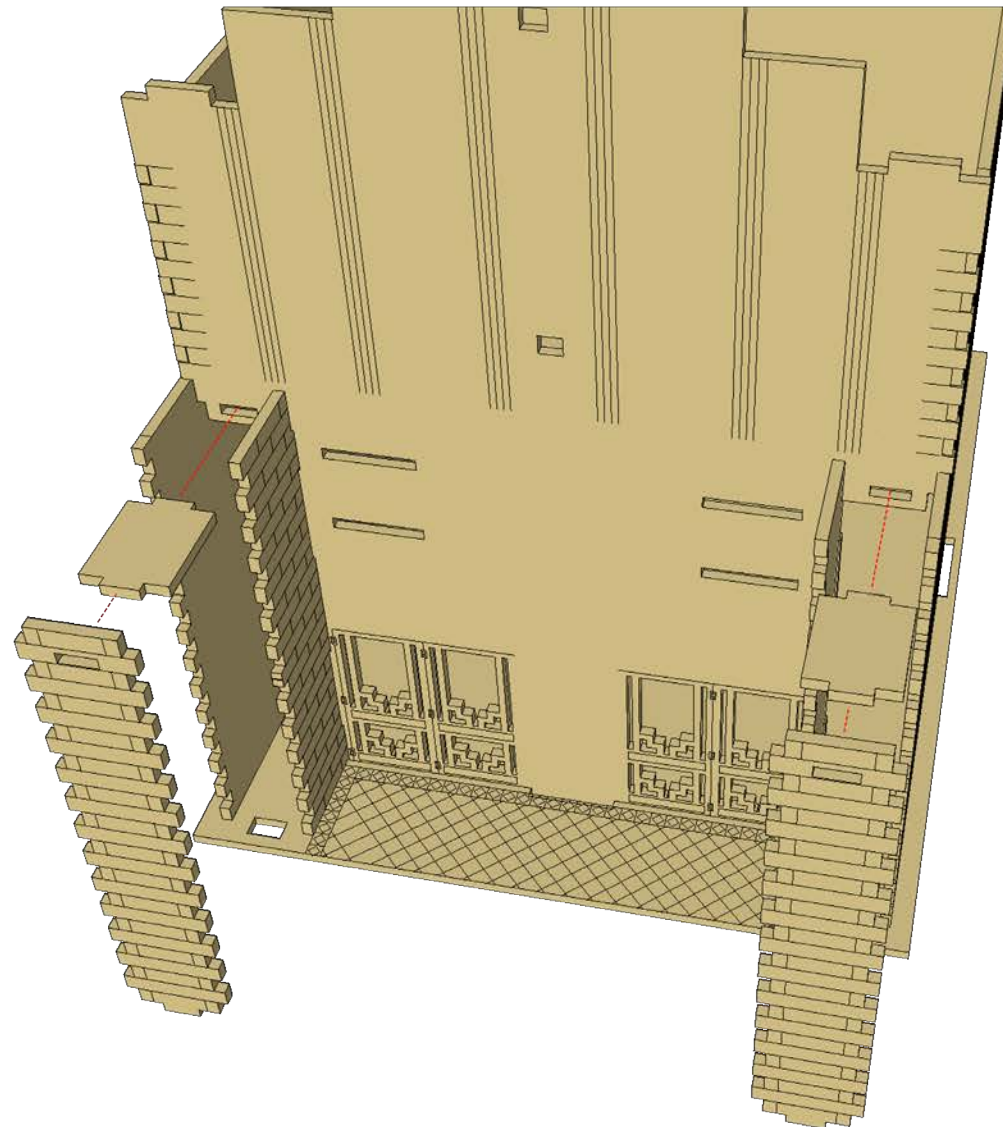


HARMONIC THEATRE ASSEMBLY INSTRUCTIONS



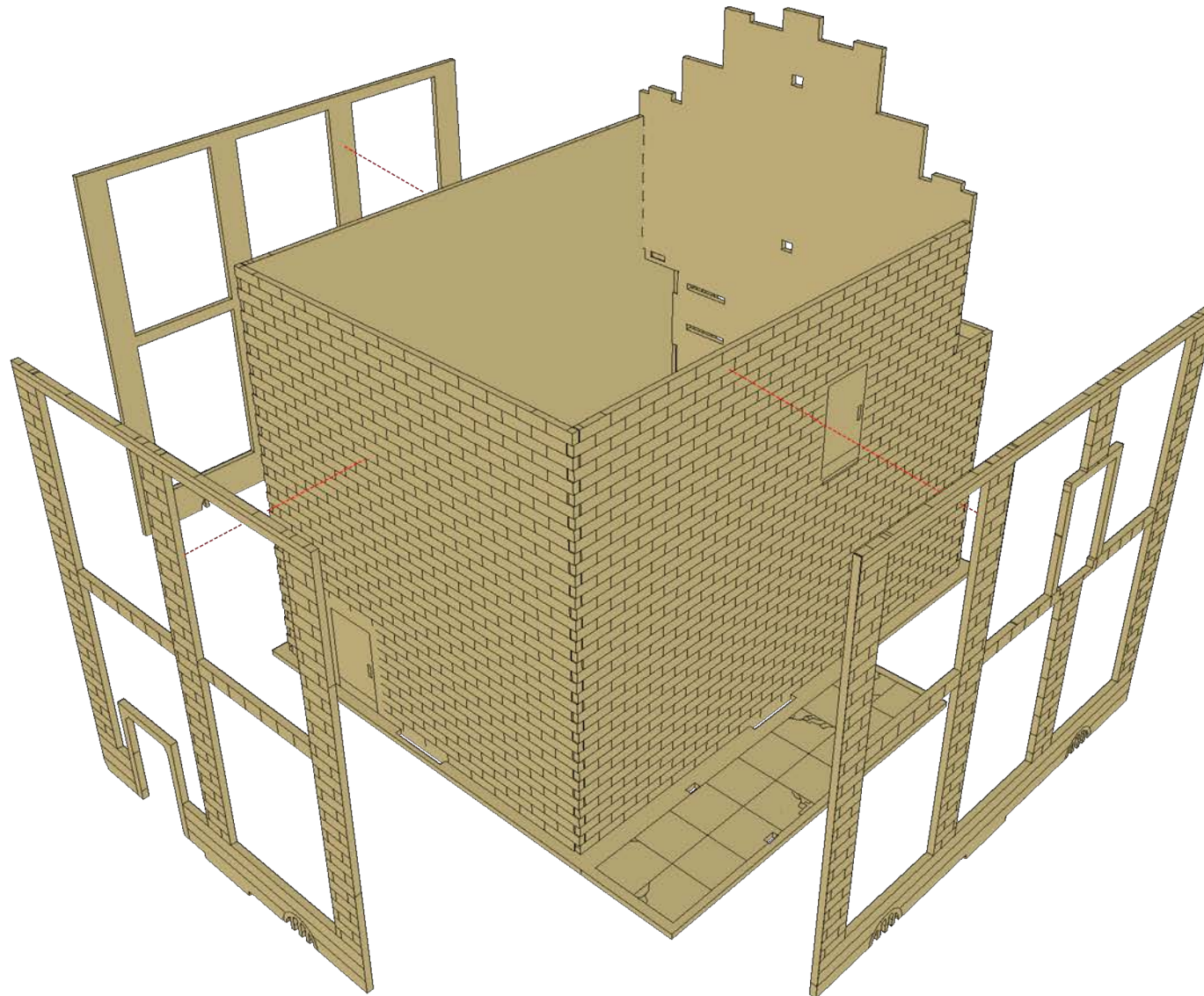


HARMONIC THEATRE ASSEMBLY INSTRUCTIONS

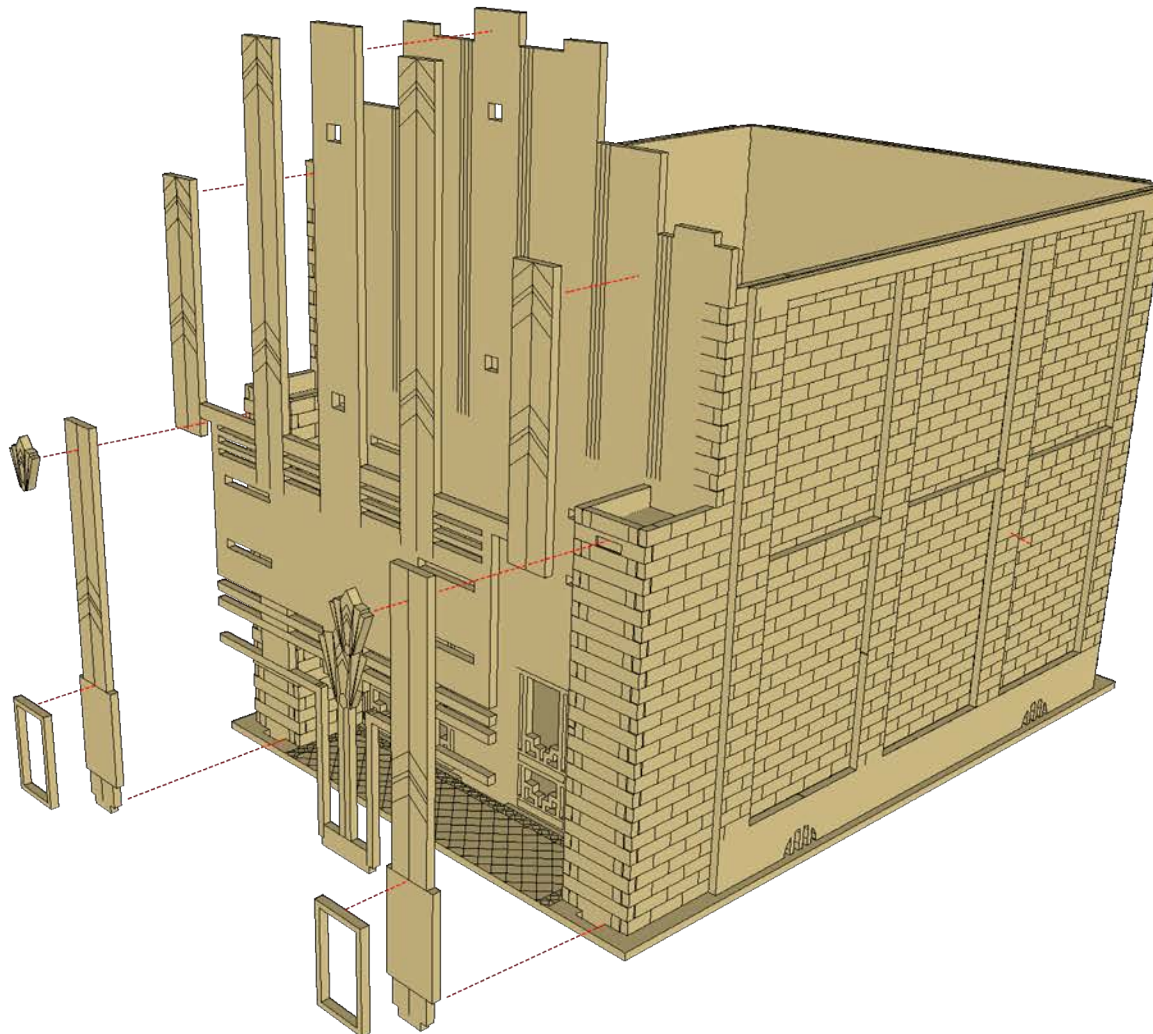


Find the longest piece of roof trim, this piece goes to the back of the building

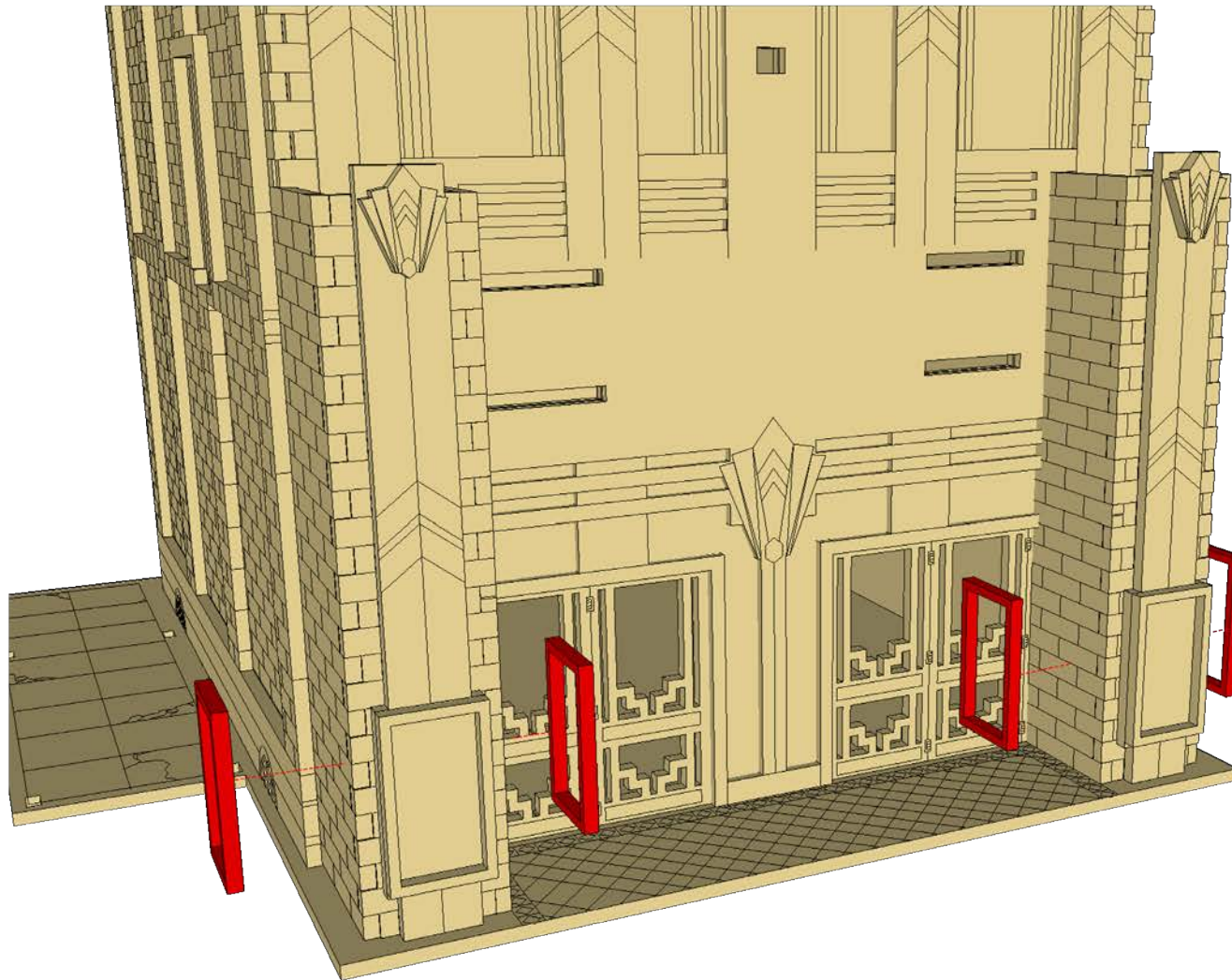
HARMONIC THEATRE ASSEMBLY INSTRUCTIONS



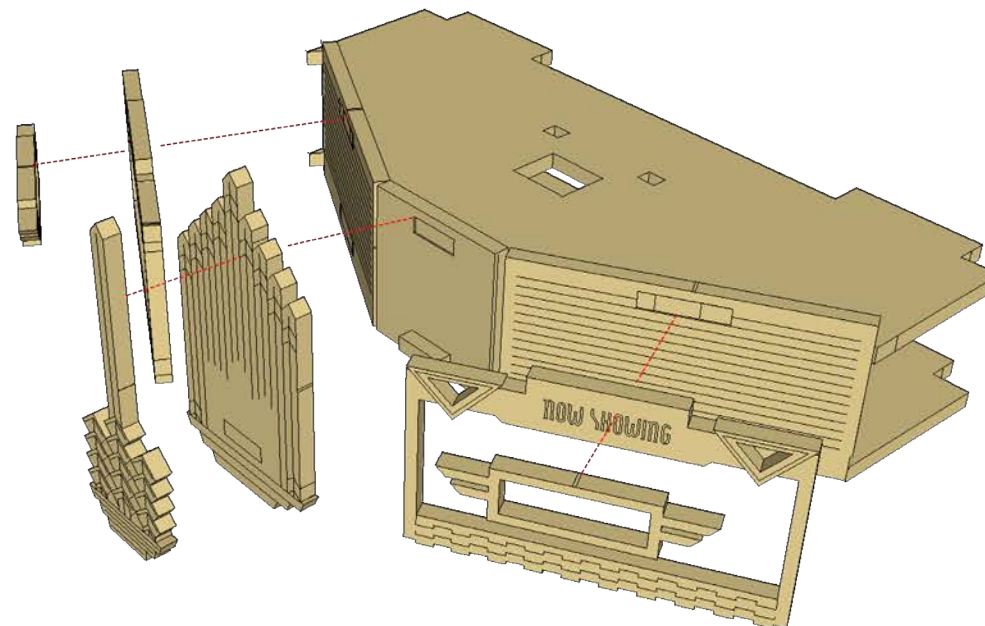
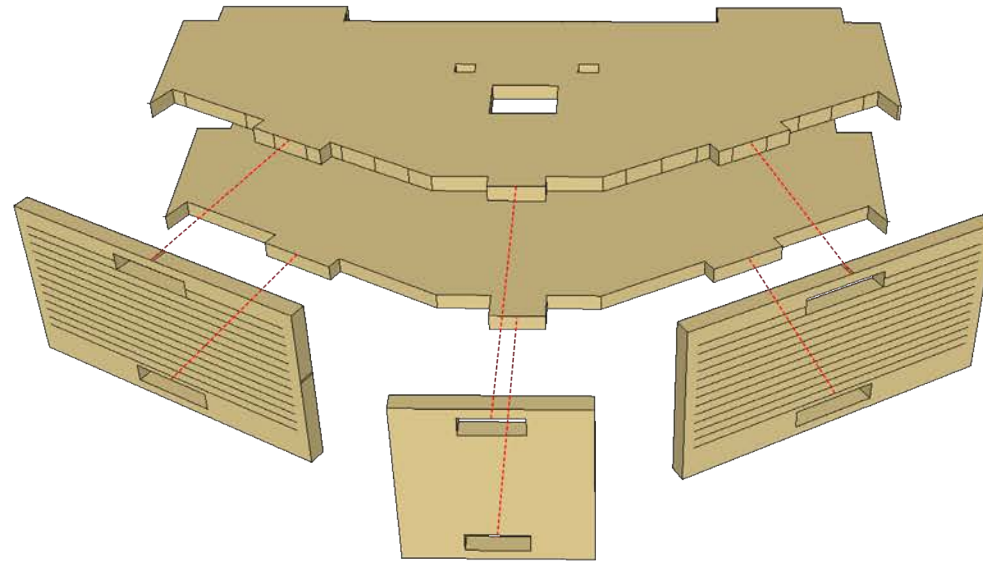
HARMONIC THEATRE ASSEMBLY INSTRUCTIONS



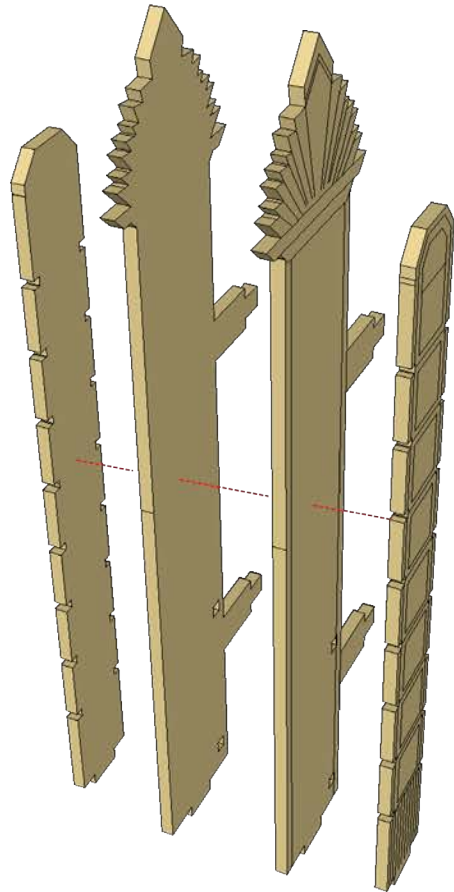
HARMONIC THEATRE ASSEMBLY INSTRUCTIONS



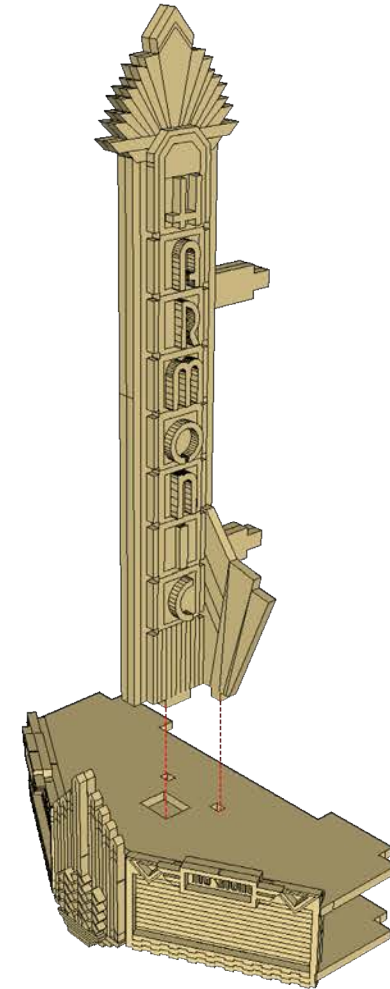
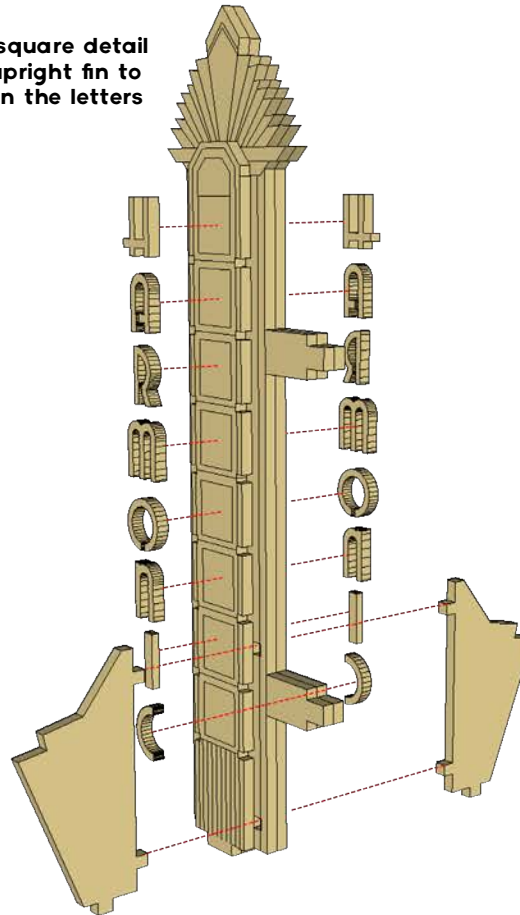
HARMONIC THEATRE ASSEMBLY INSTRUCTIONS



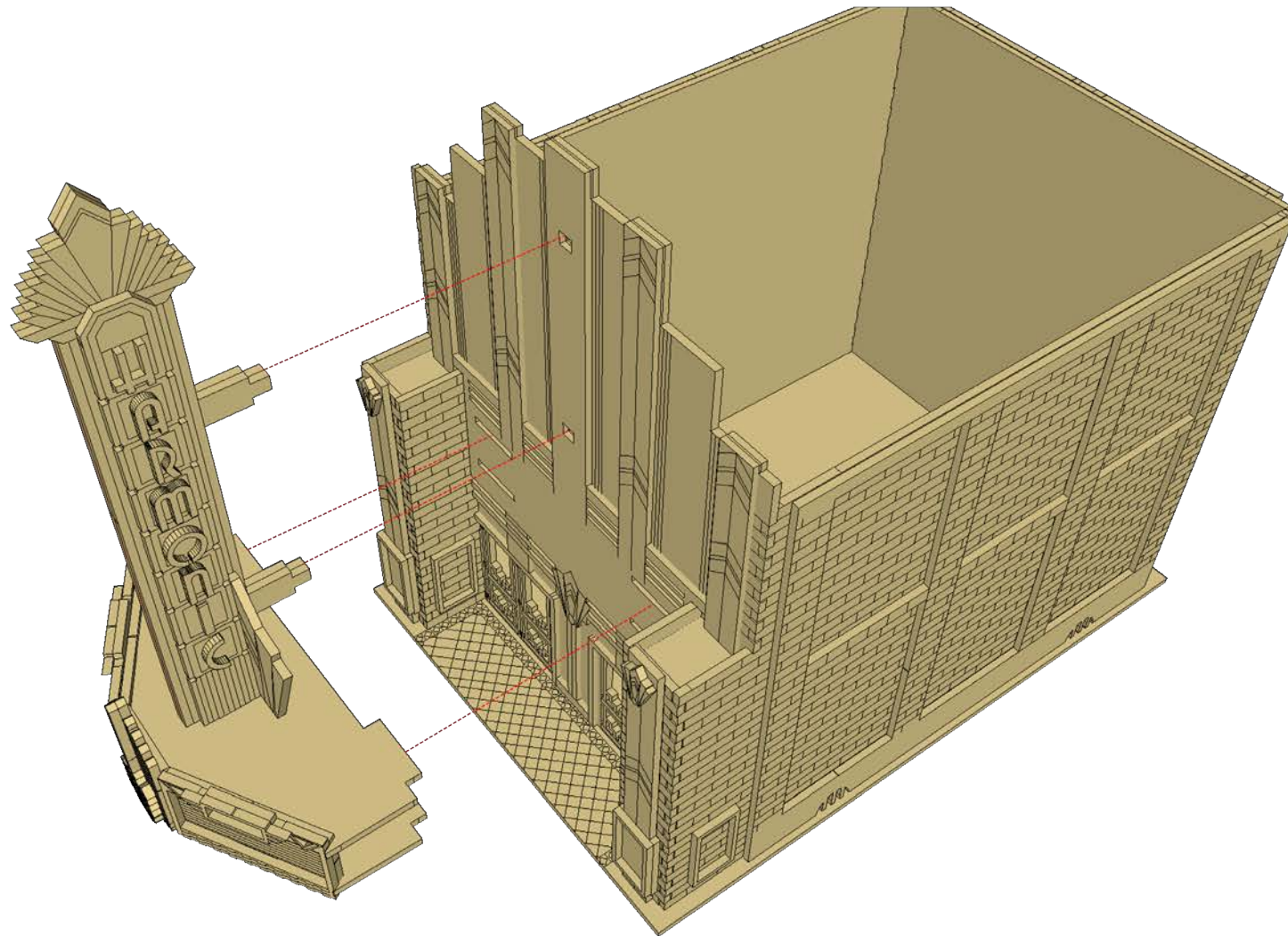
HARMONIC THEATRE ASSEMBLY INSTRUCTIONS



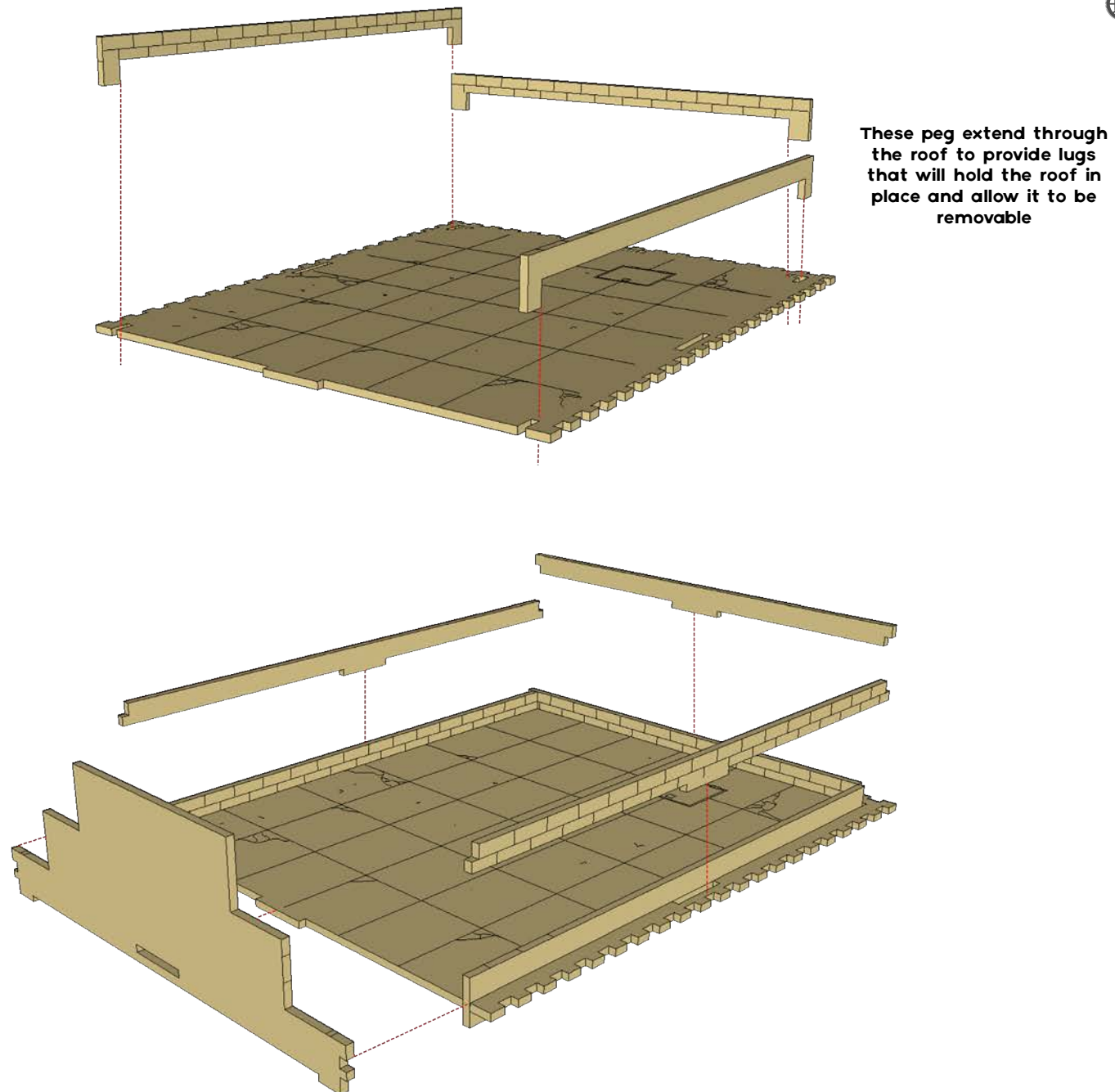
Use the square detail
on the upright fin to
help align the letters



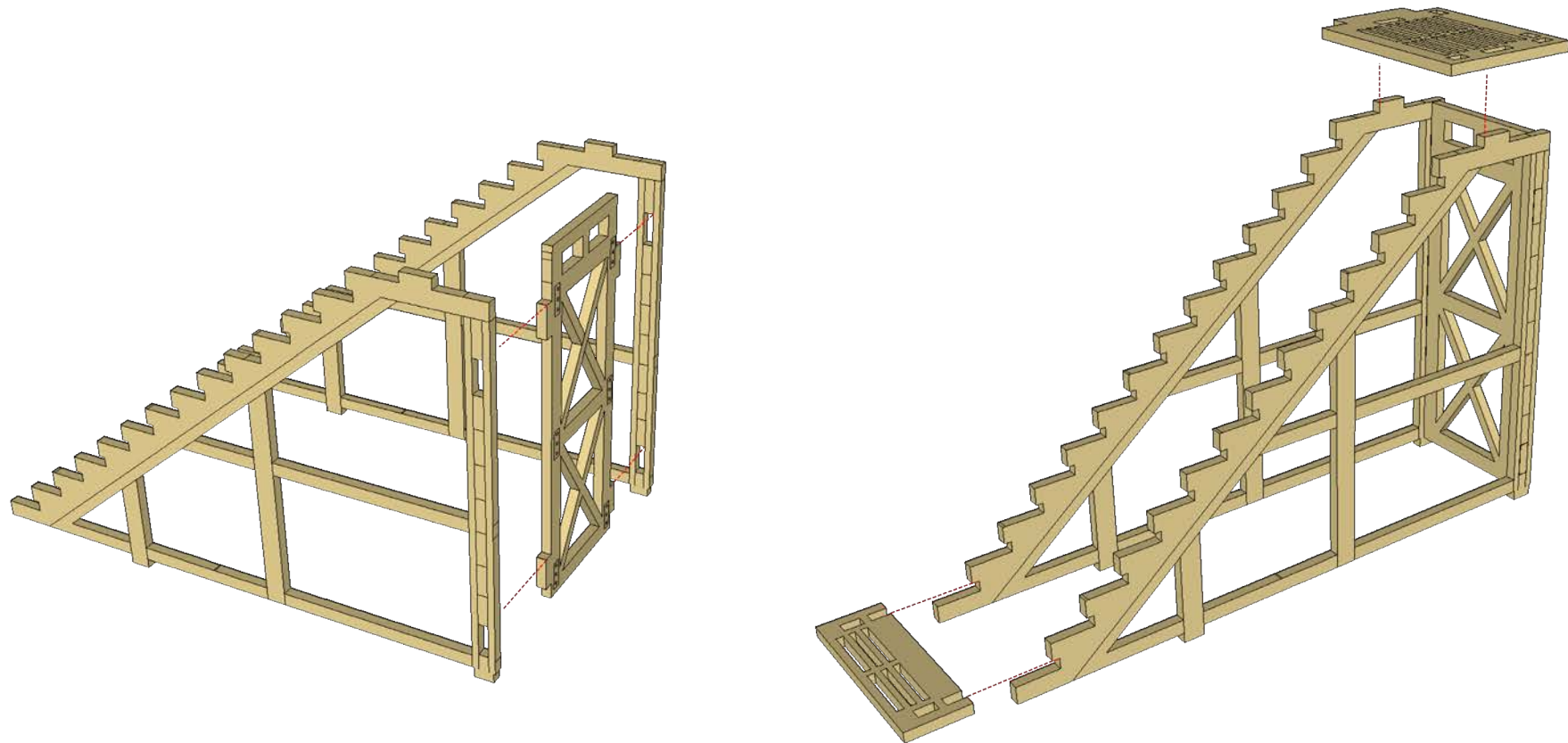
HARMONIC THEATRE ASSEMBLY INSTRUCTIONS



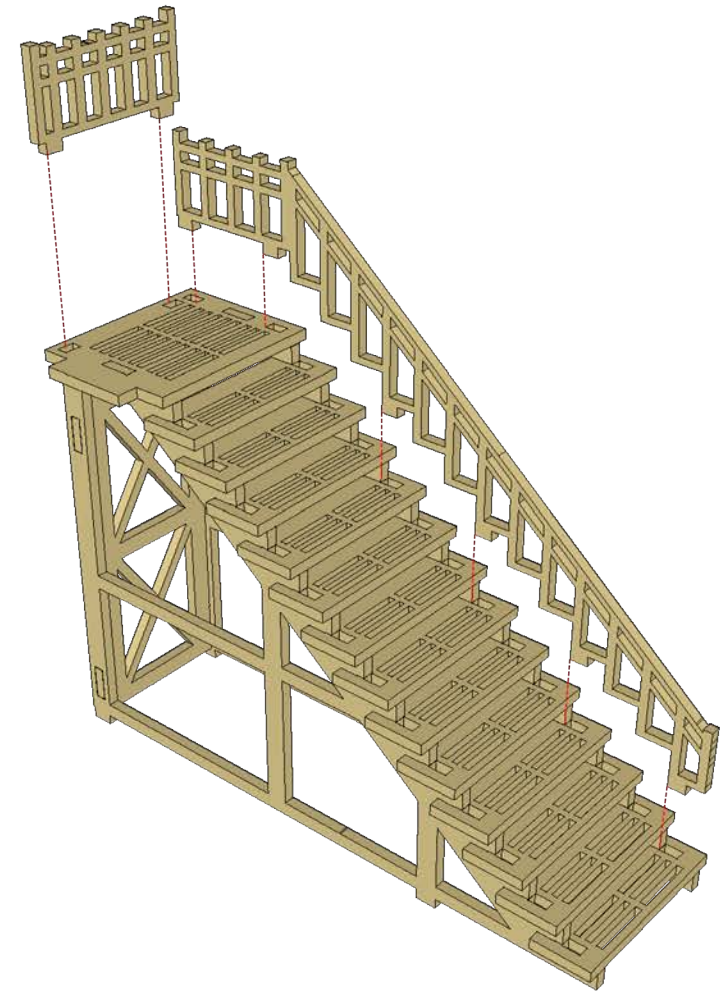
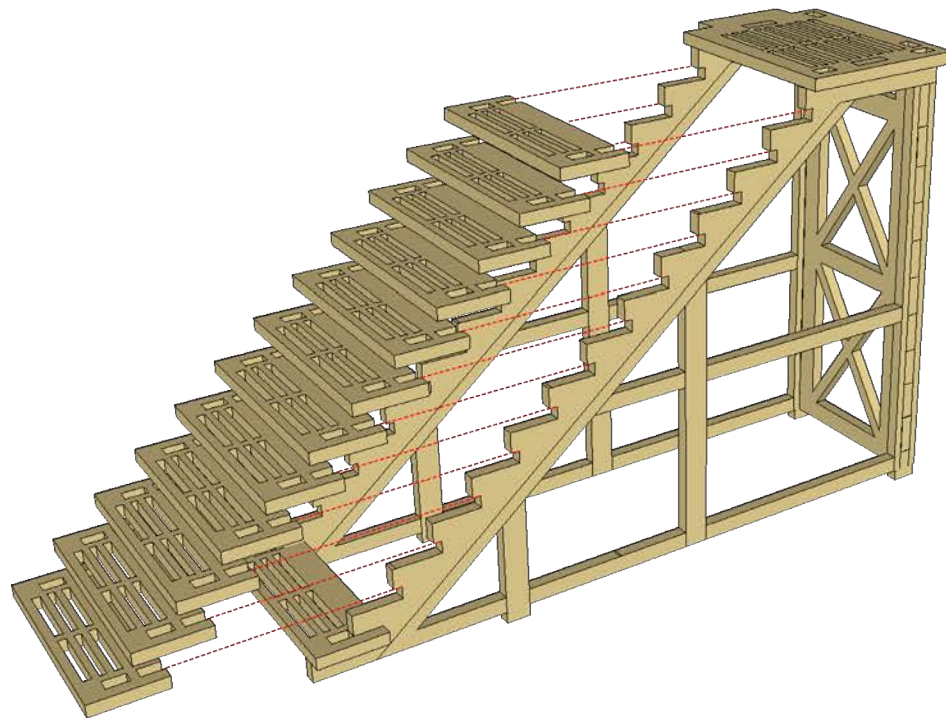
HARMONIC THEATRE ASSEMBLY INSTRUCTIONS



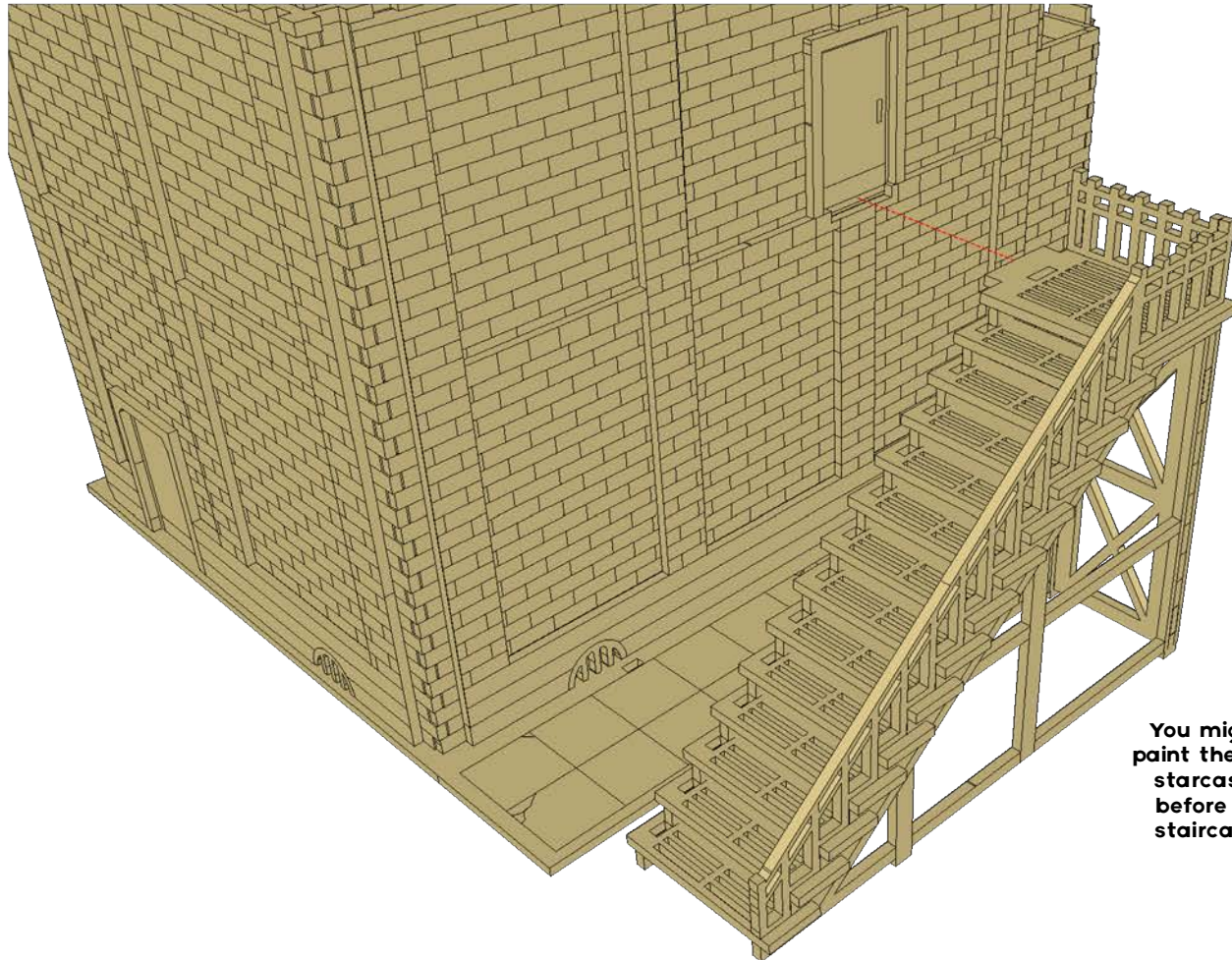
HARMONIC THEATRE ASSEMBLY INSTRUCTIONS



HARMONIC THEATRE ASSEMBLY INSTRUCTIONS



HARMONIC THEATRE ASSEMBLY INSTRUCTIONS



You might want to paint the building and staircase separately before gluing the staircase in place.

HARMONIC THEATRE ASSEMBLY INSTRUCTIONS

Don't glue the roof in place, keep it removable to allow interior access. The lugs will keep it in place

