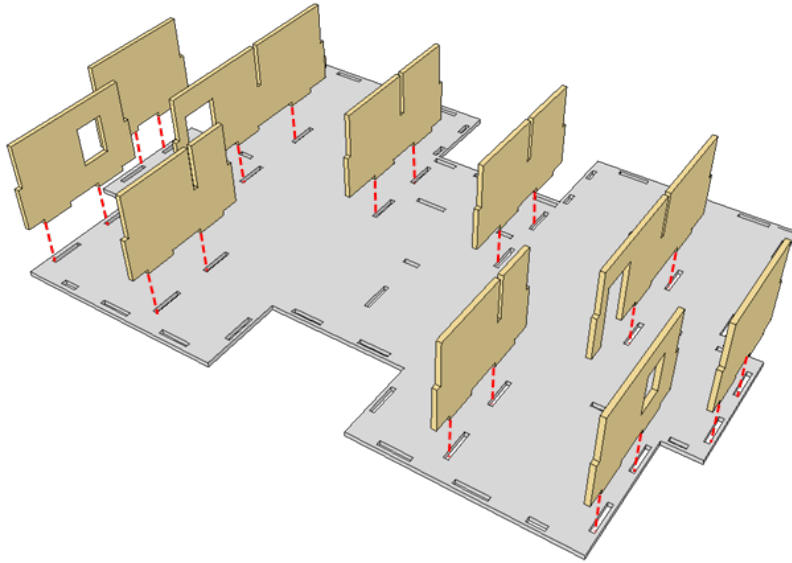


TRAB006 JUPITER ADDITIONAL FLOOR



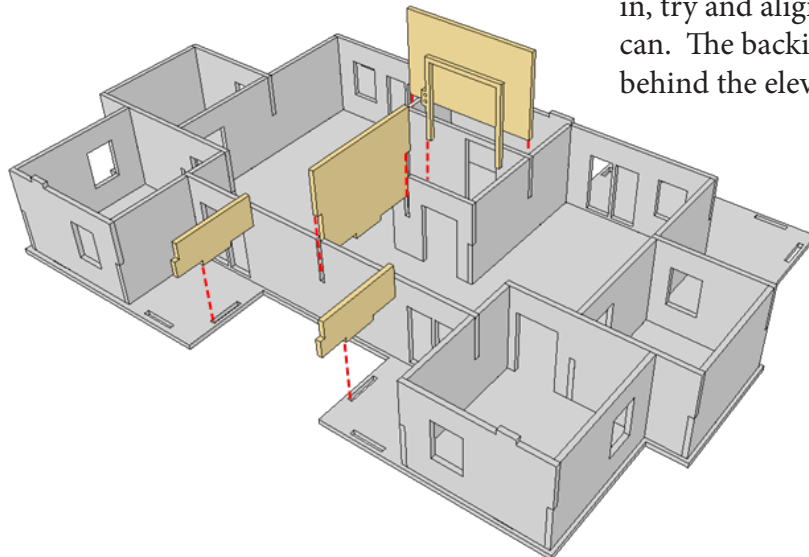
STEP 1



STEP 2

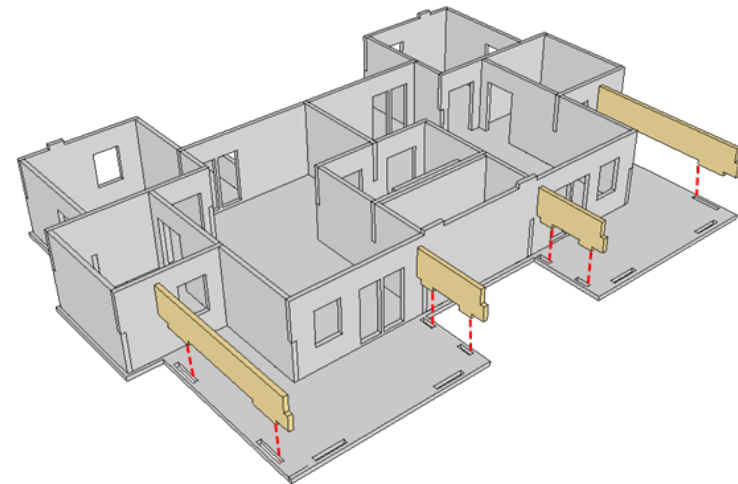


STEP 3



The elevator trim does not plug in, try and align it as best you can. The backing plate slips in behind the elevator door plate

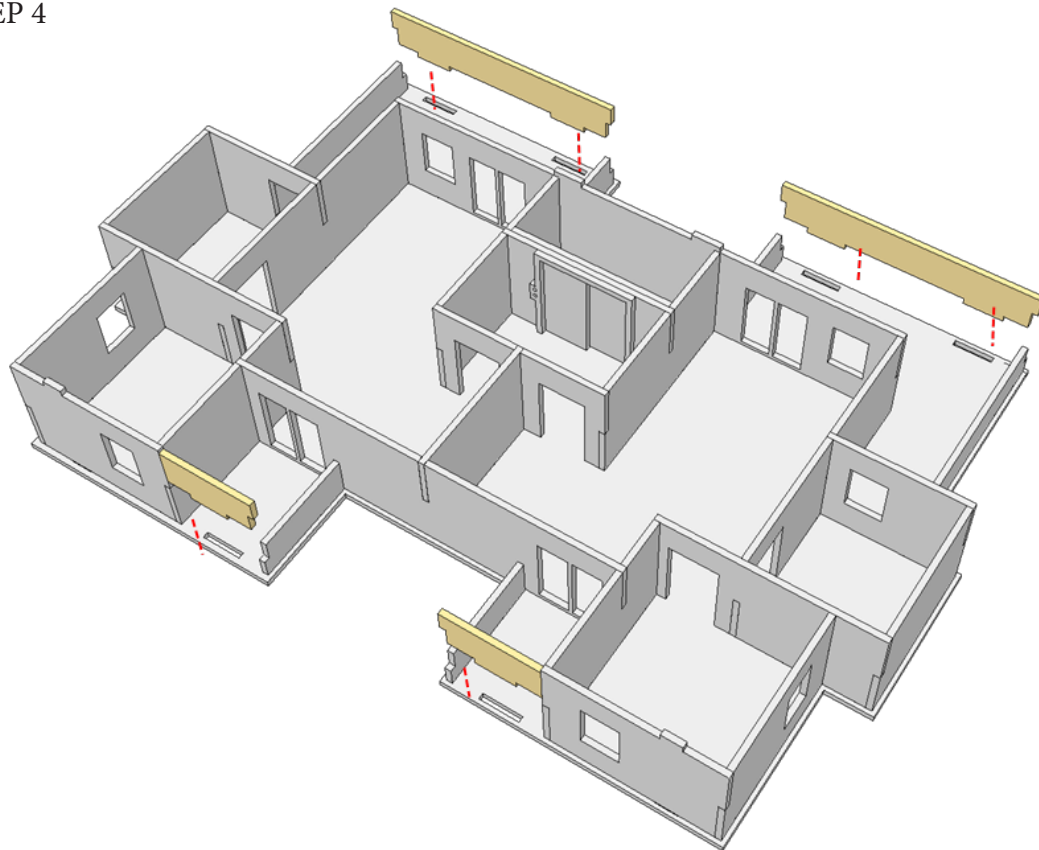
STEP 4



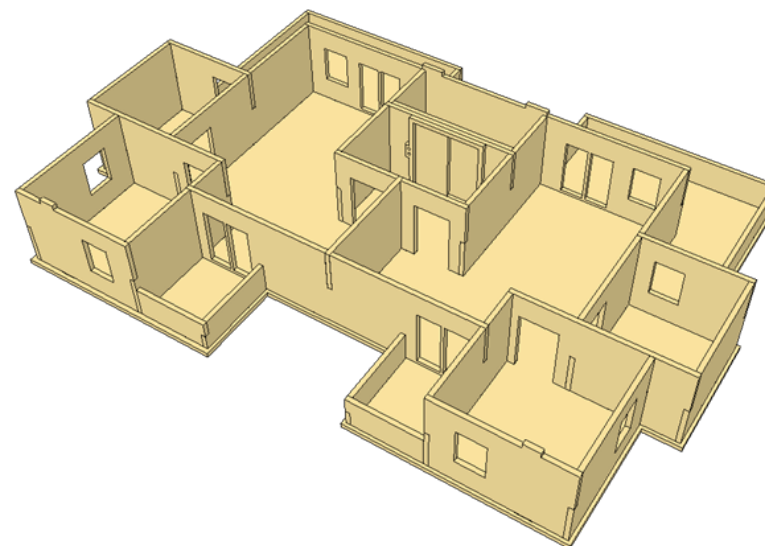
TRAB006 JUPITER ADDITIONAL FLOOR



STEP 4



Additional Floor
Complete!



IMPORTANT:

Allow the glue to fully dry before leaving the additional floor on the rest of your model, or you risk gluing it to the floor underneath!