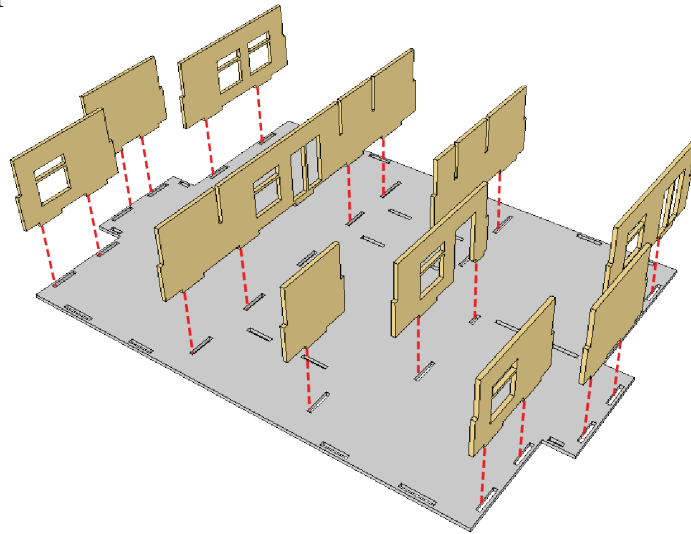


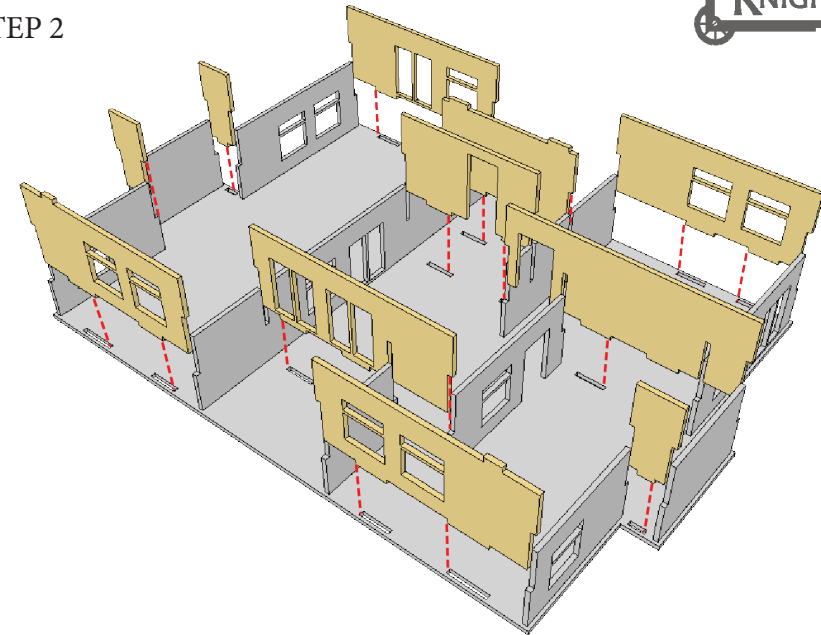
# TRAB004 JUPITER APARTMENTS



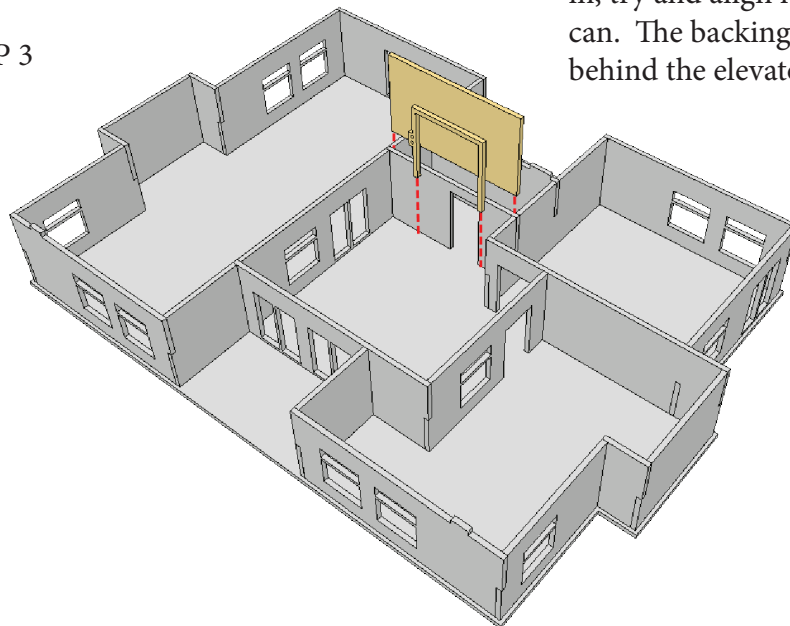
STEP 1



STEP 2

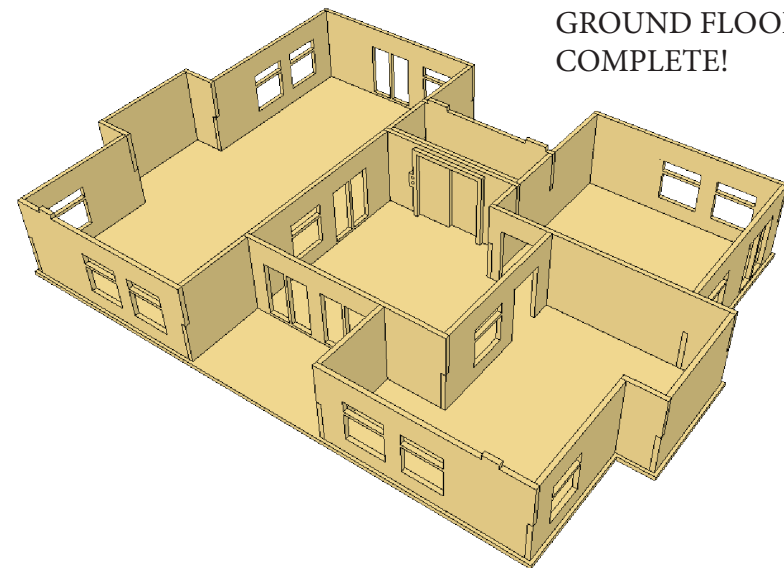


STEP 3



The elevator trim does not plug in, try and align it as best you can. The backing plate slips in behind the elevator door plate

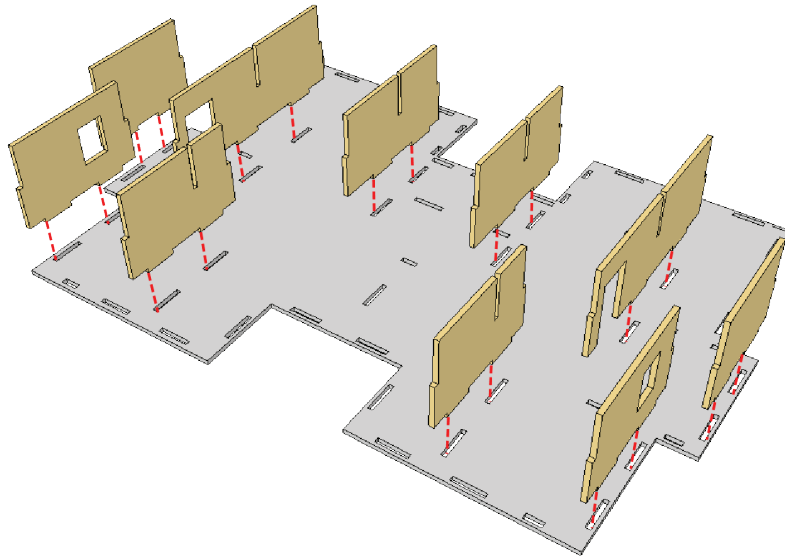
GROUND FLOOR COMPLETE!



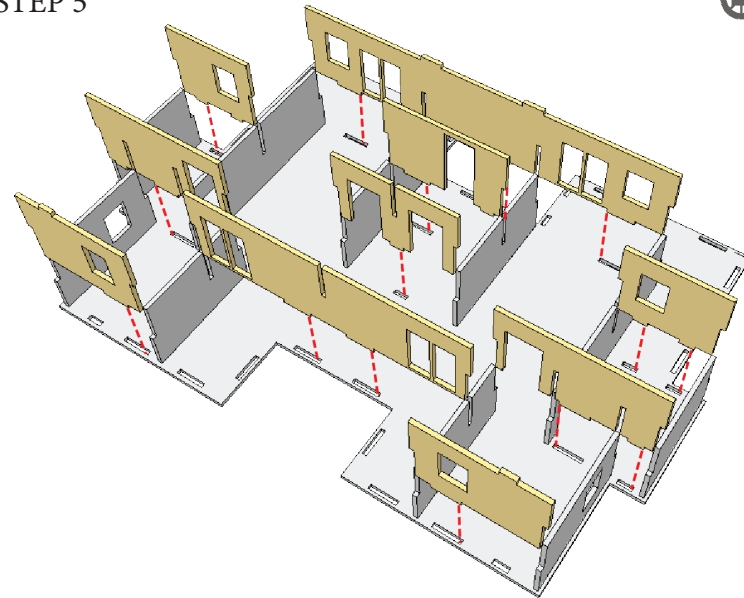
# TRAB004 JUPITER APARTMENTS



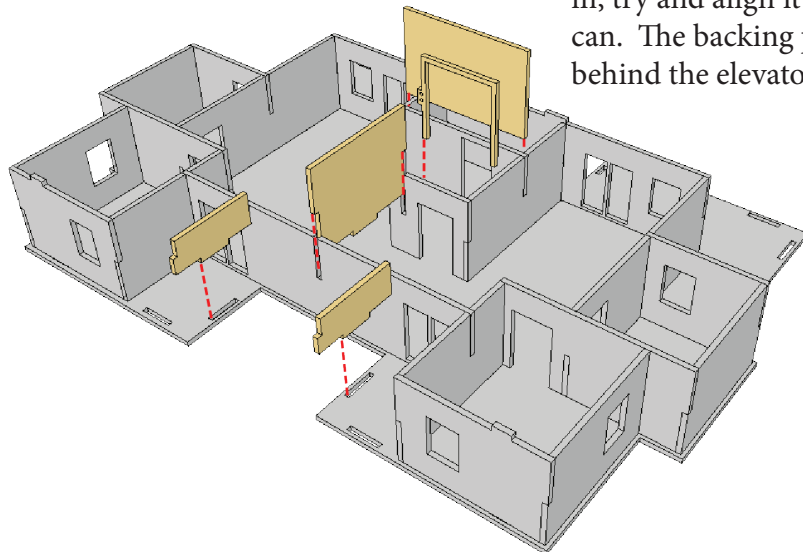
STEP 4



STEP 5

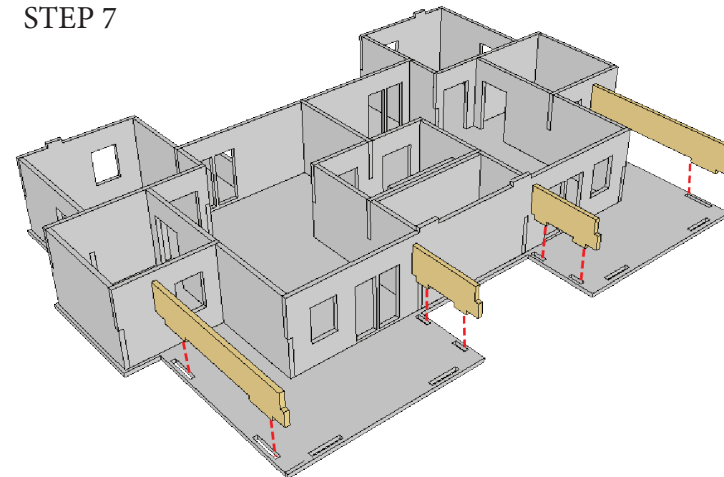


STEP 6



The elevator trim does not plug in, try and align it as best you can. The backing plate slips in behind the elevator door plate

STEP 7

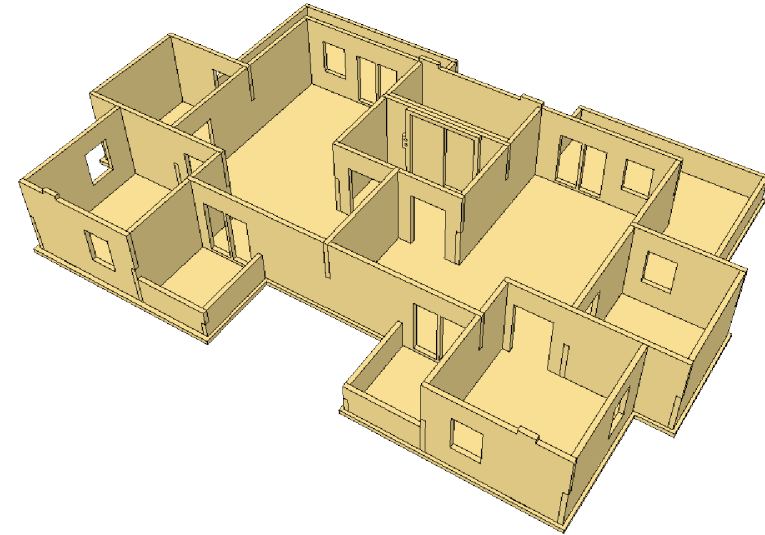
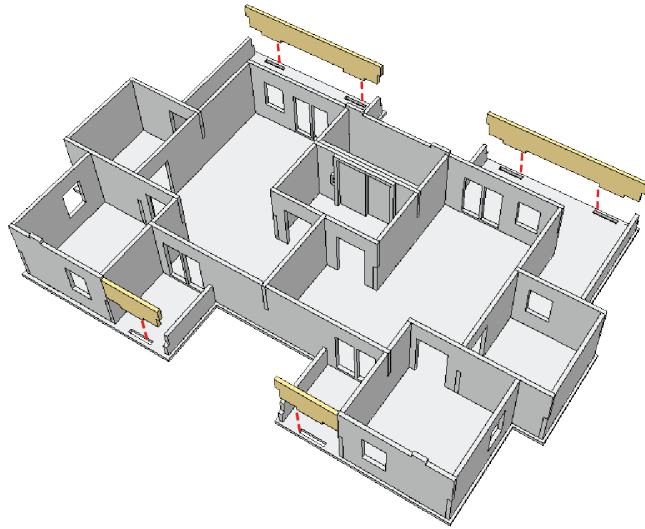


# TRAB004 JUPITER APARTMENTS



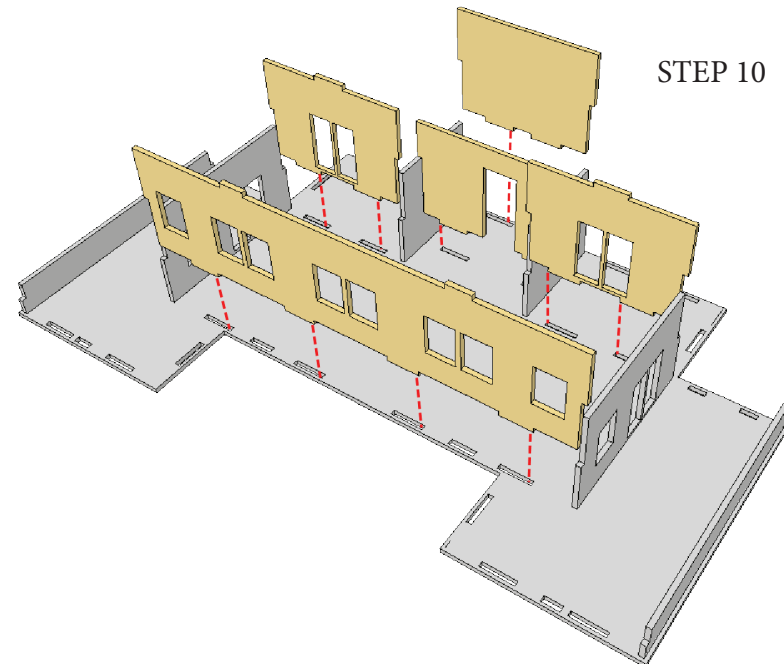
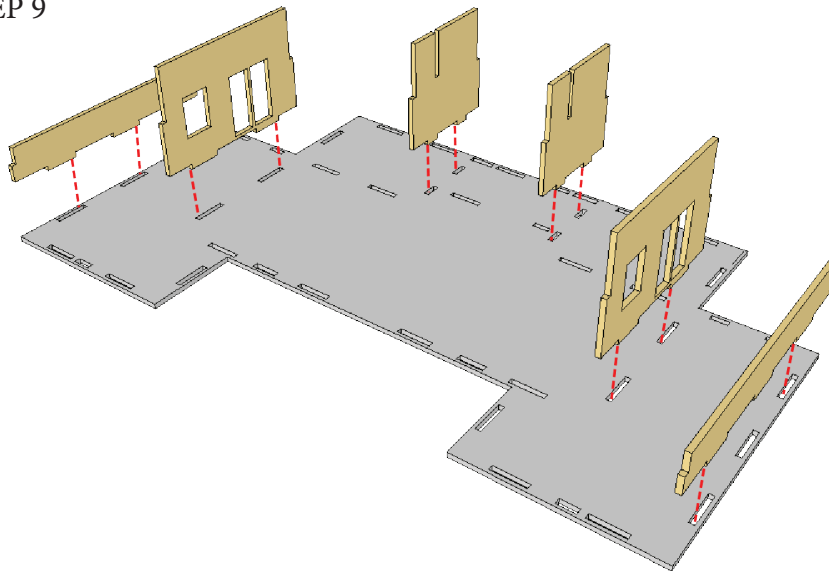
STEP 8

1ST FLOOR COMPLETE



STEP 9

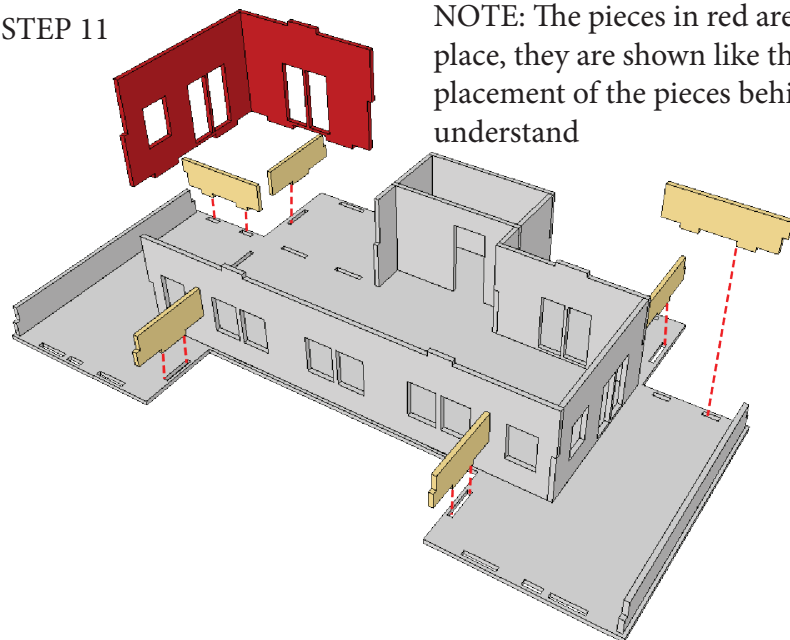
STEP 10



## TRAB004 JUPITER APARTMENTS

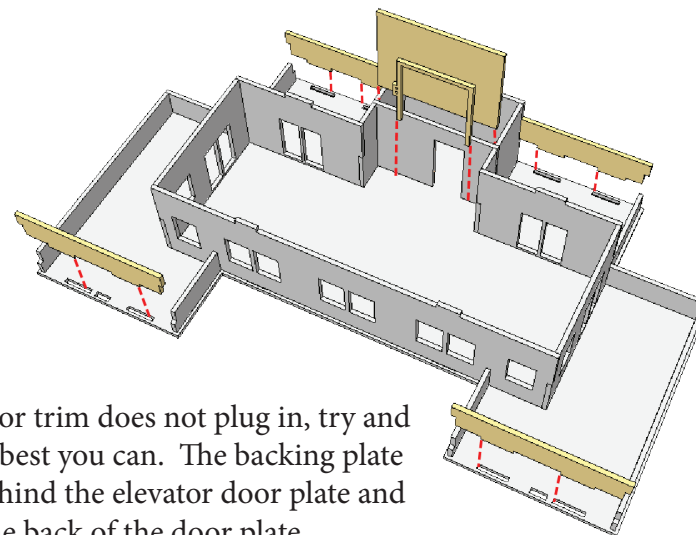


STEP 11



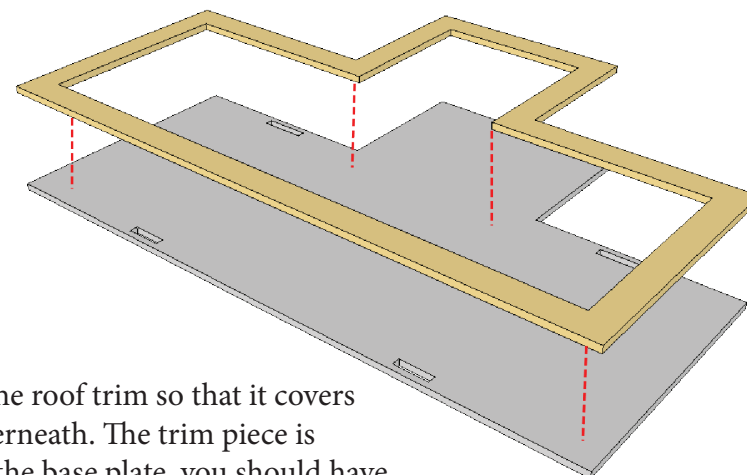
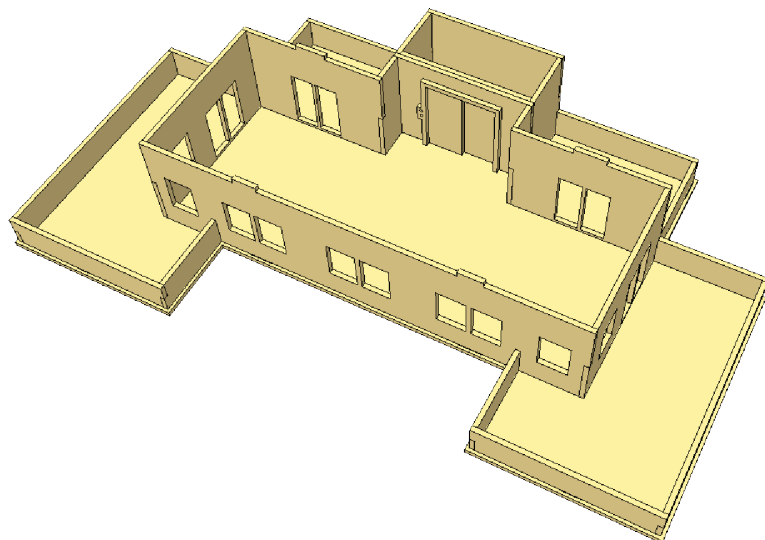
NOTE: The pieces in red are already in place, they are shown like this to make the placement of the pieces behind easier to understand

2nd Floor Complete!



The elevator trim does not plug in, try and align it as best you can. The backing plate slips in behind the elevator door plate and glues to the back of the door plate

2ND FLOOR COMPLETE



Try to align the roof trim so that it covers the slots underneath. The trim piece is smaller than the base plate, you should have a 2mm 'gap' so that the trim is 'inset'

# TRAB004 JUPITER APARTMENTS



CONGRATULATIONS!

MODEL COMPLETE!

