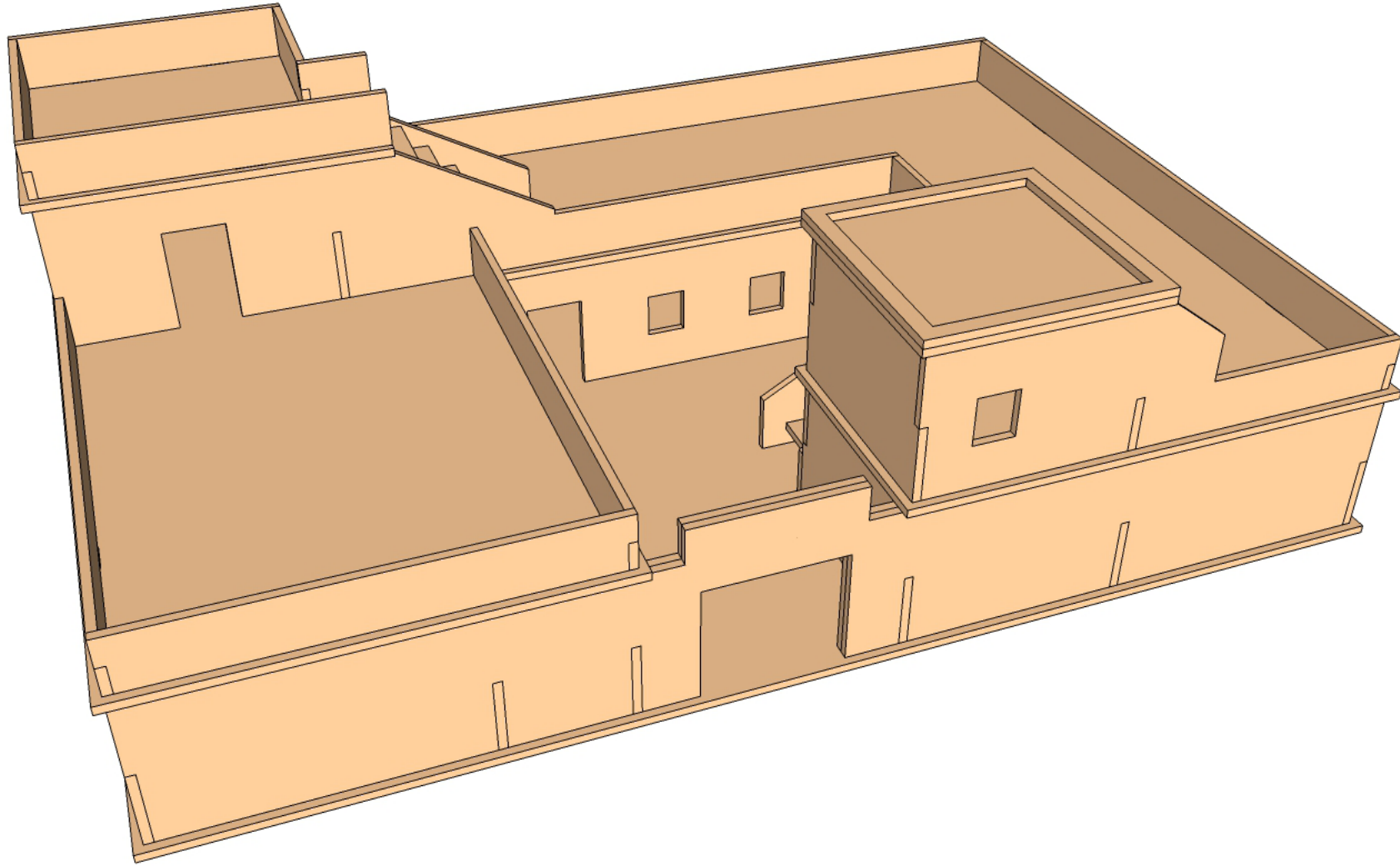
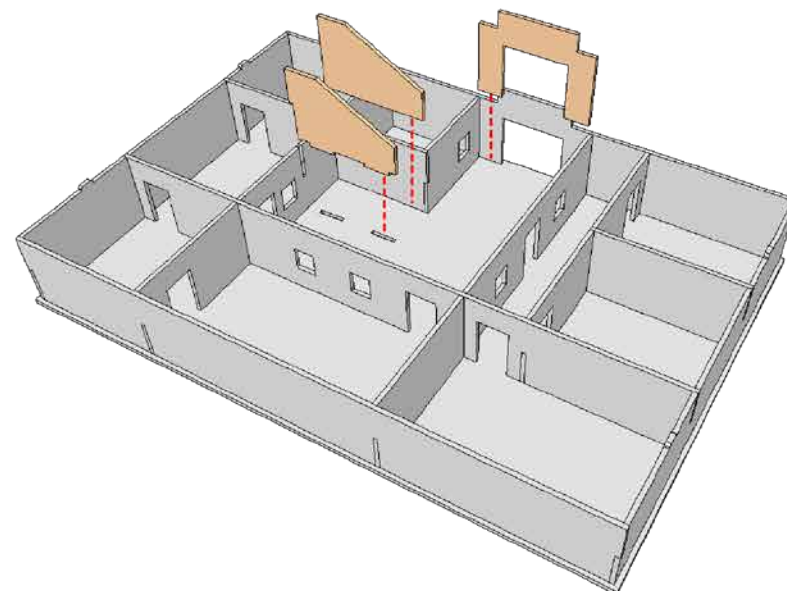
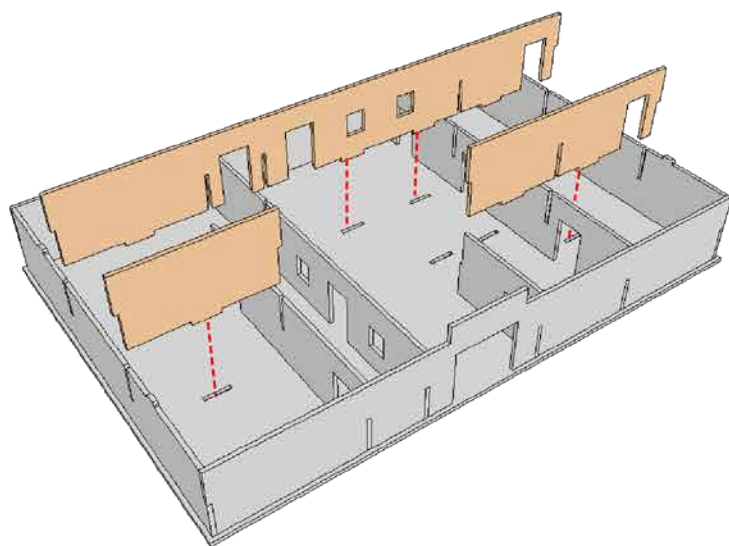
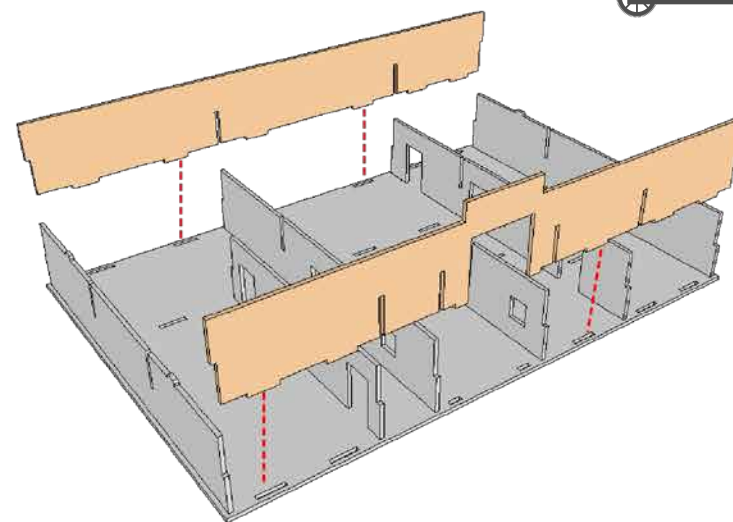
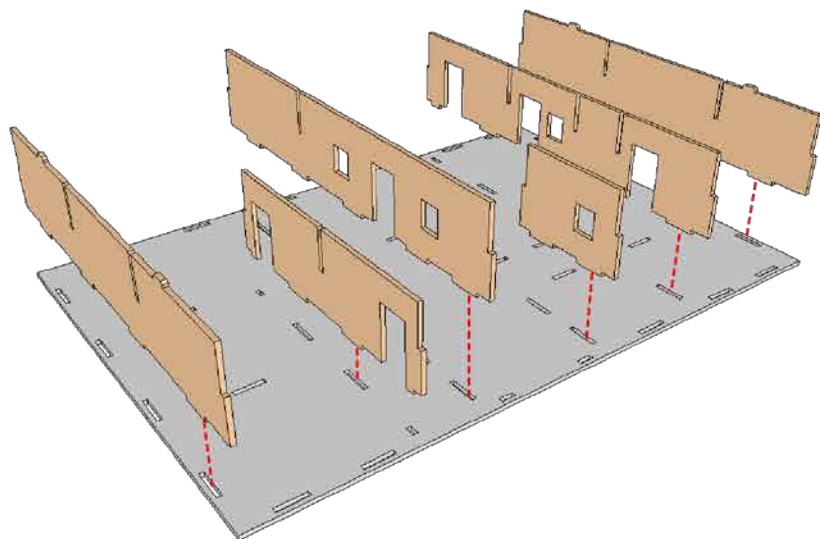


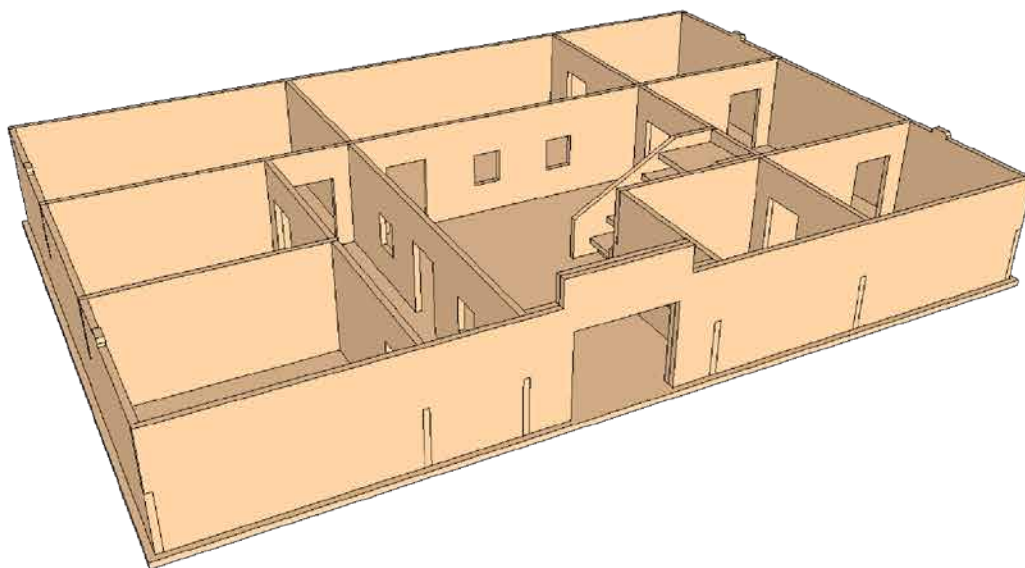
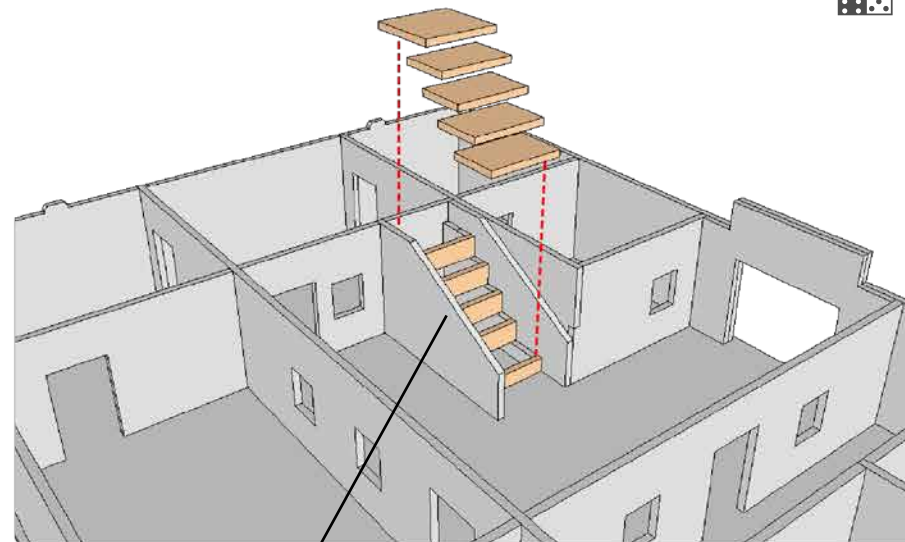
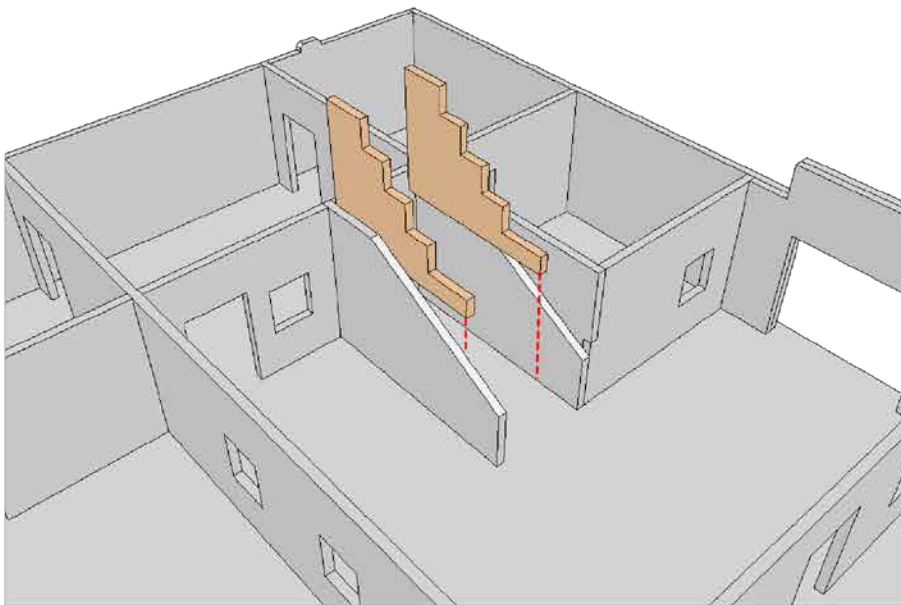
TRDB015 Large Compound 1



TRDB015 Large Compound 1



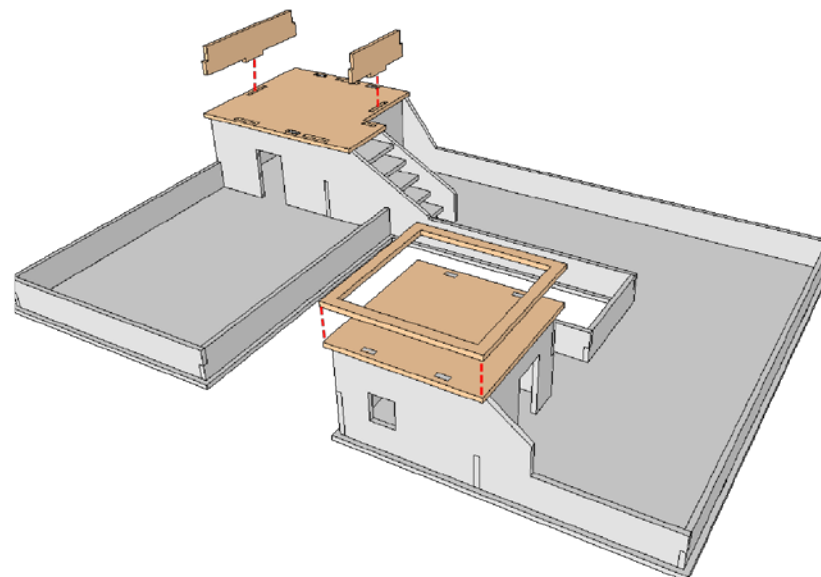
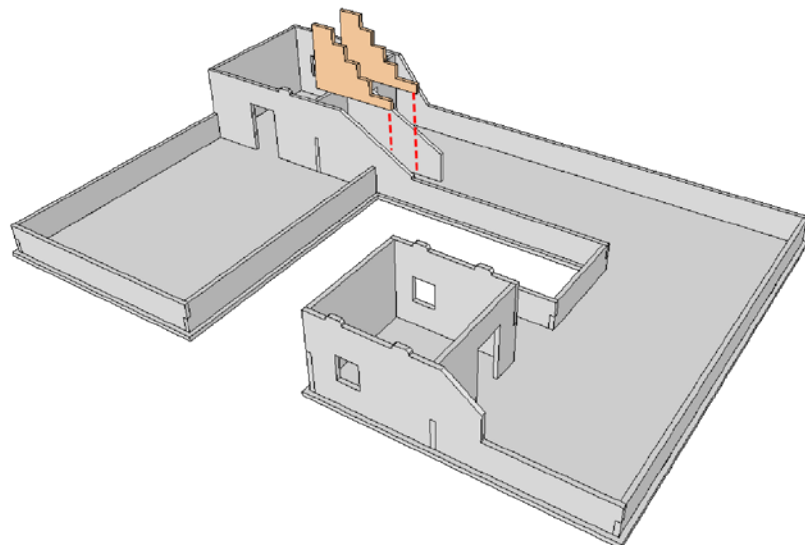
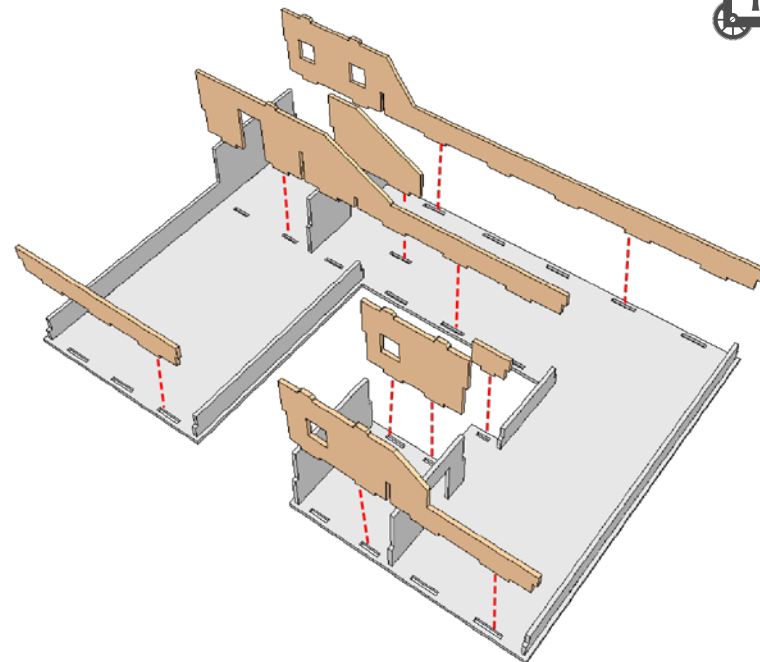
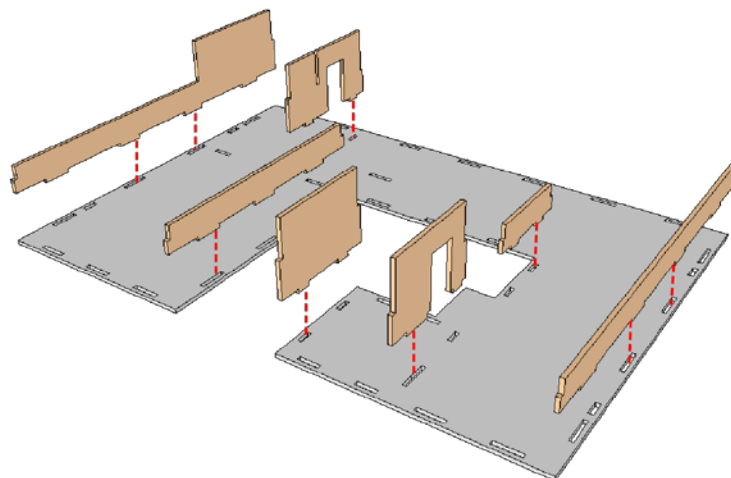
TRDB015 Large Compound 1



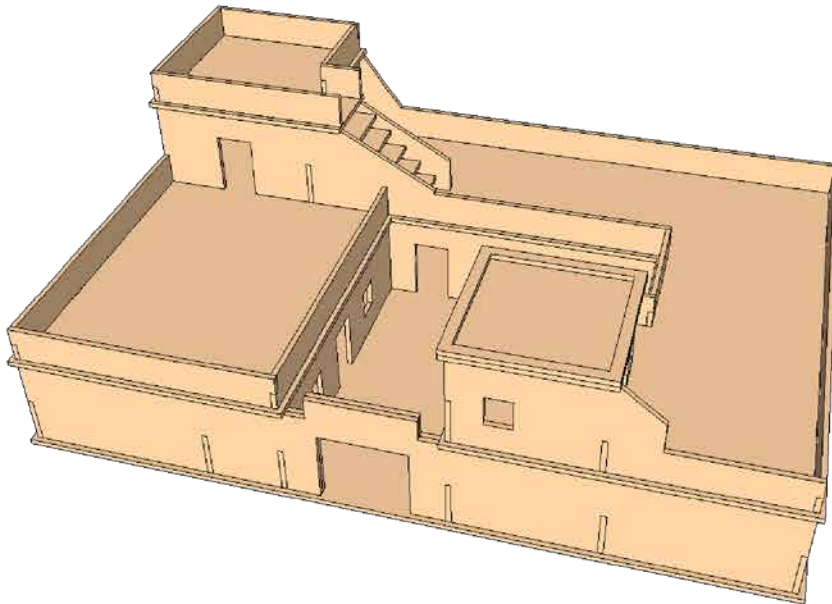
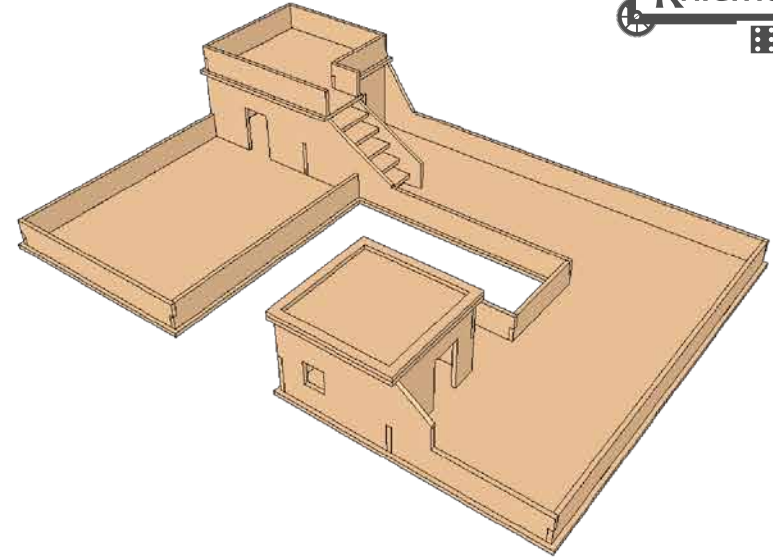
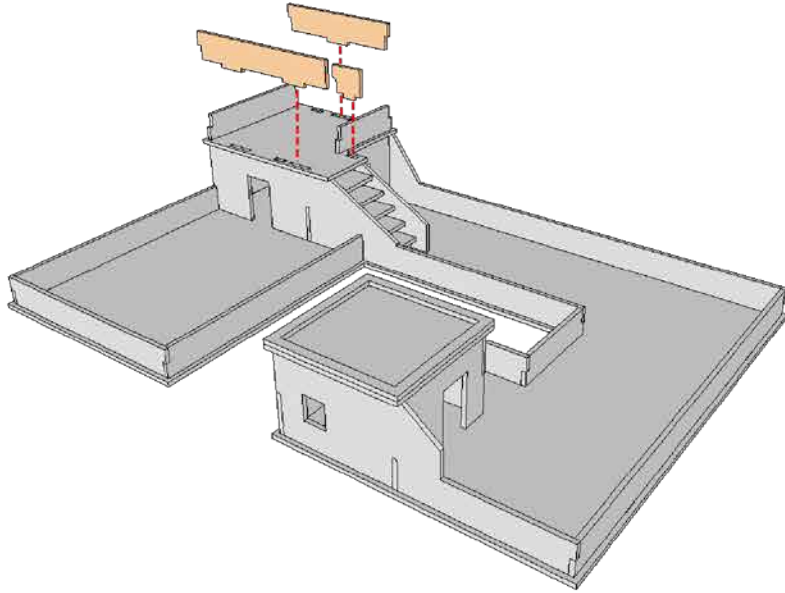
Work your way up ... place the kickplates first starting at ground level. Once those are in place, you can place the stair treads on top.

You might find it useful to use super glue to place both the kickplates and the stair treads as the framing components are quite narrow and it is easy to knock the tread below the one you are placing

TRDB015 Large Compound 1



TRDB015 Large Compound 1



CONGRATULATIONS!

**You have completed building your
Large Compound 1**