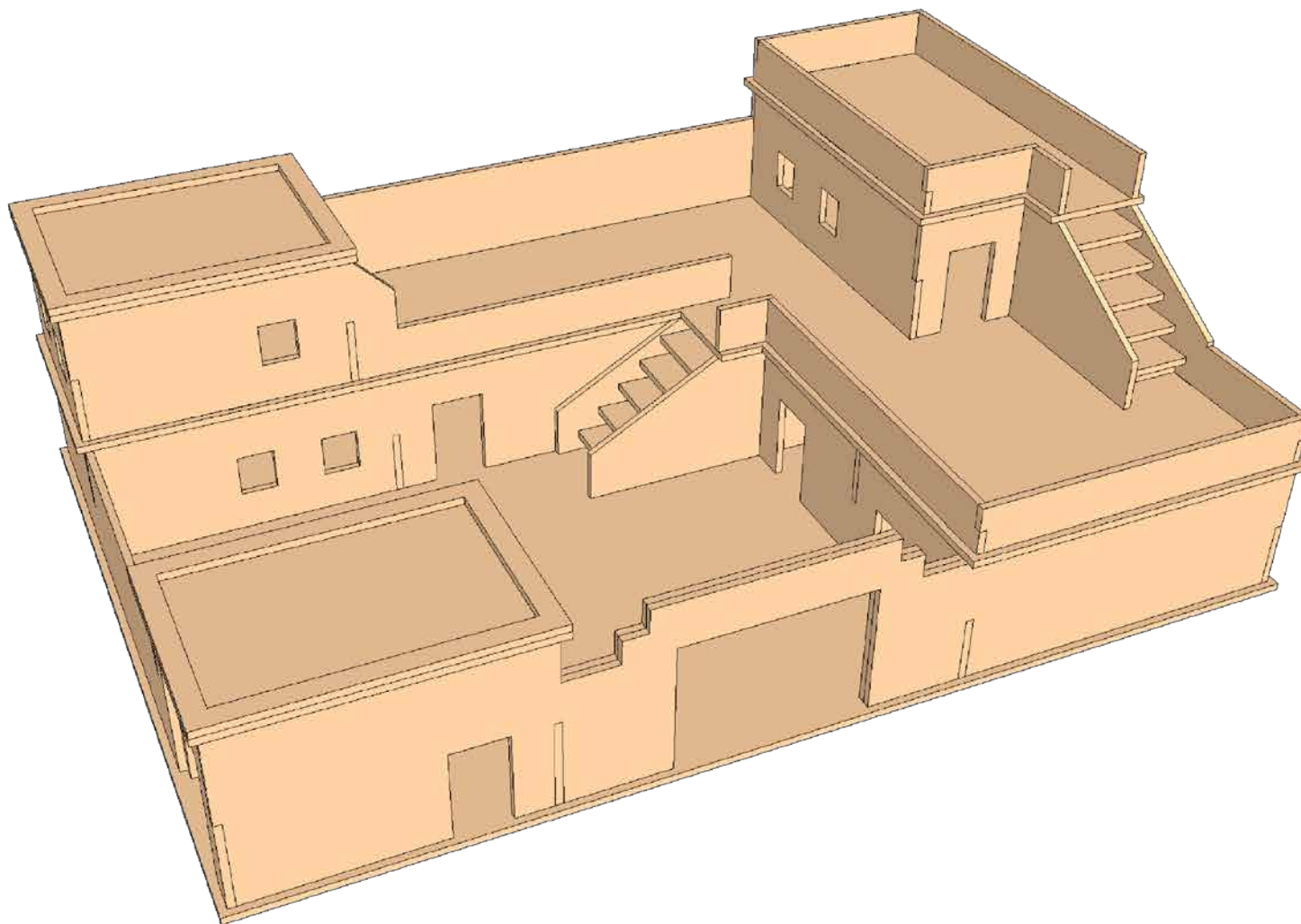
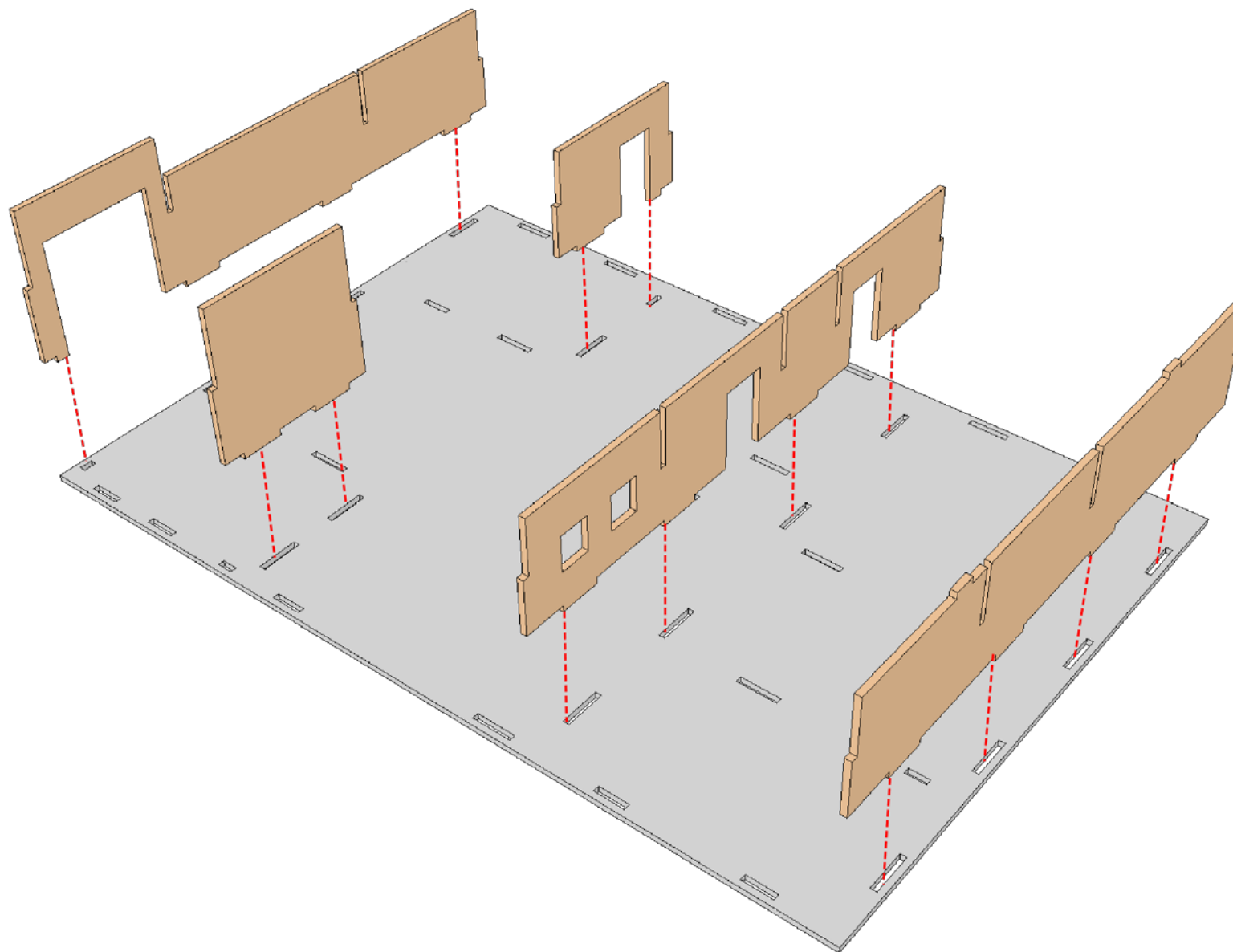


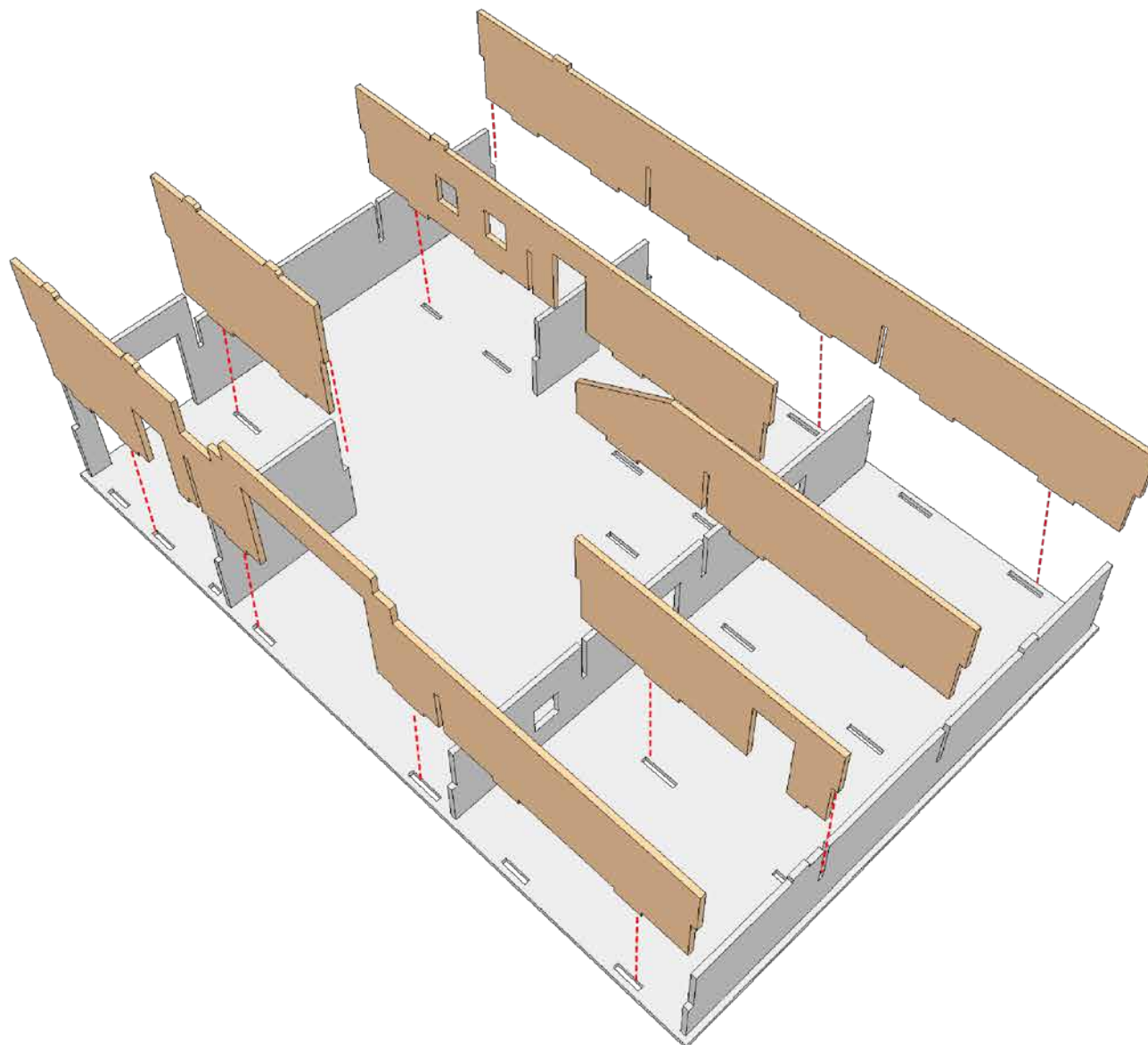
TRDB016 Large Compound 2



TRDB016 Large Compound 2



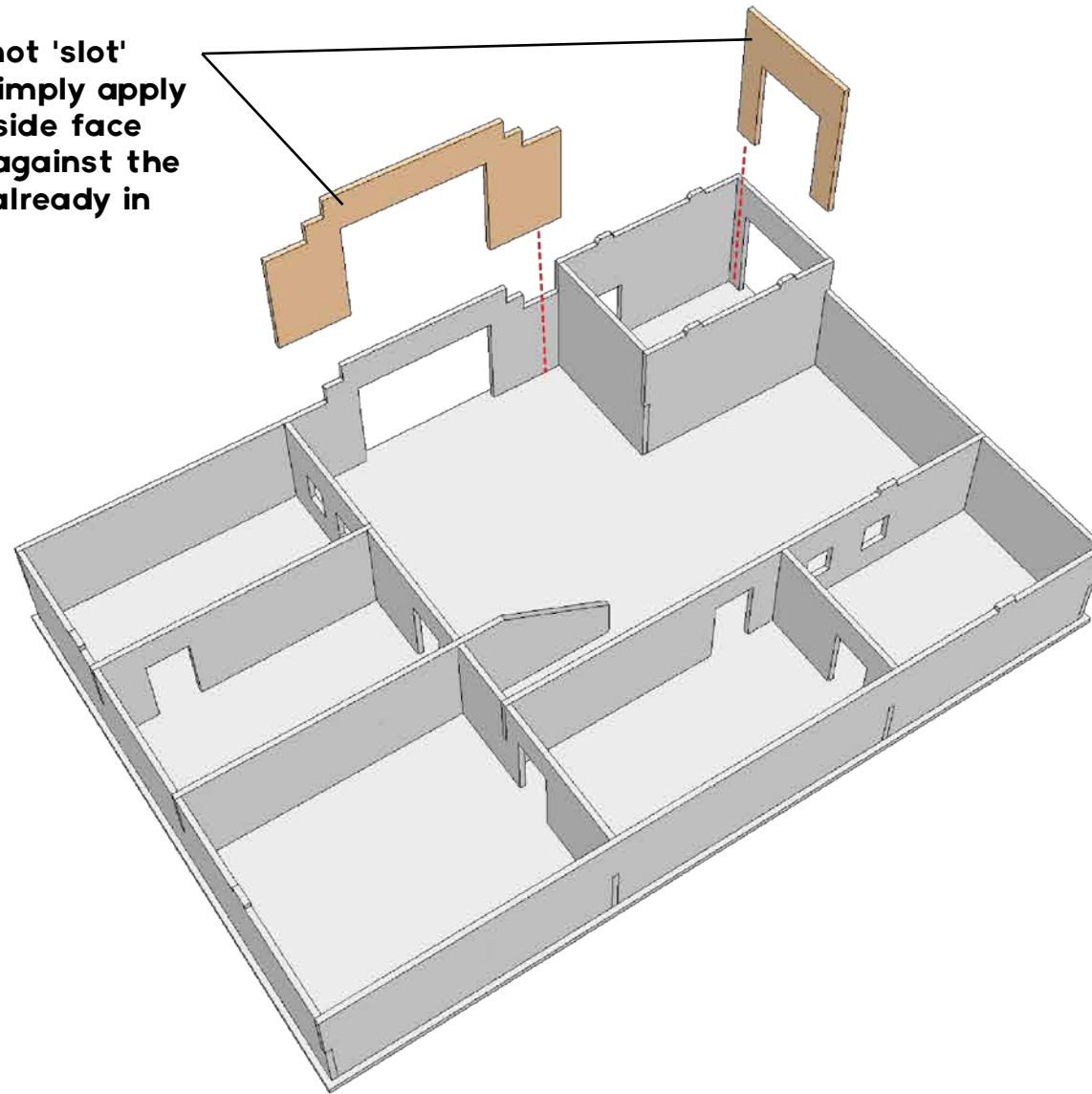
TRDB016 Large Compound 2



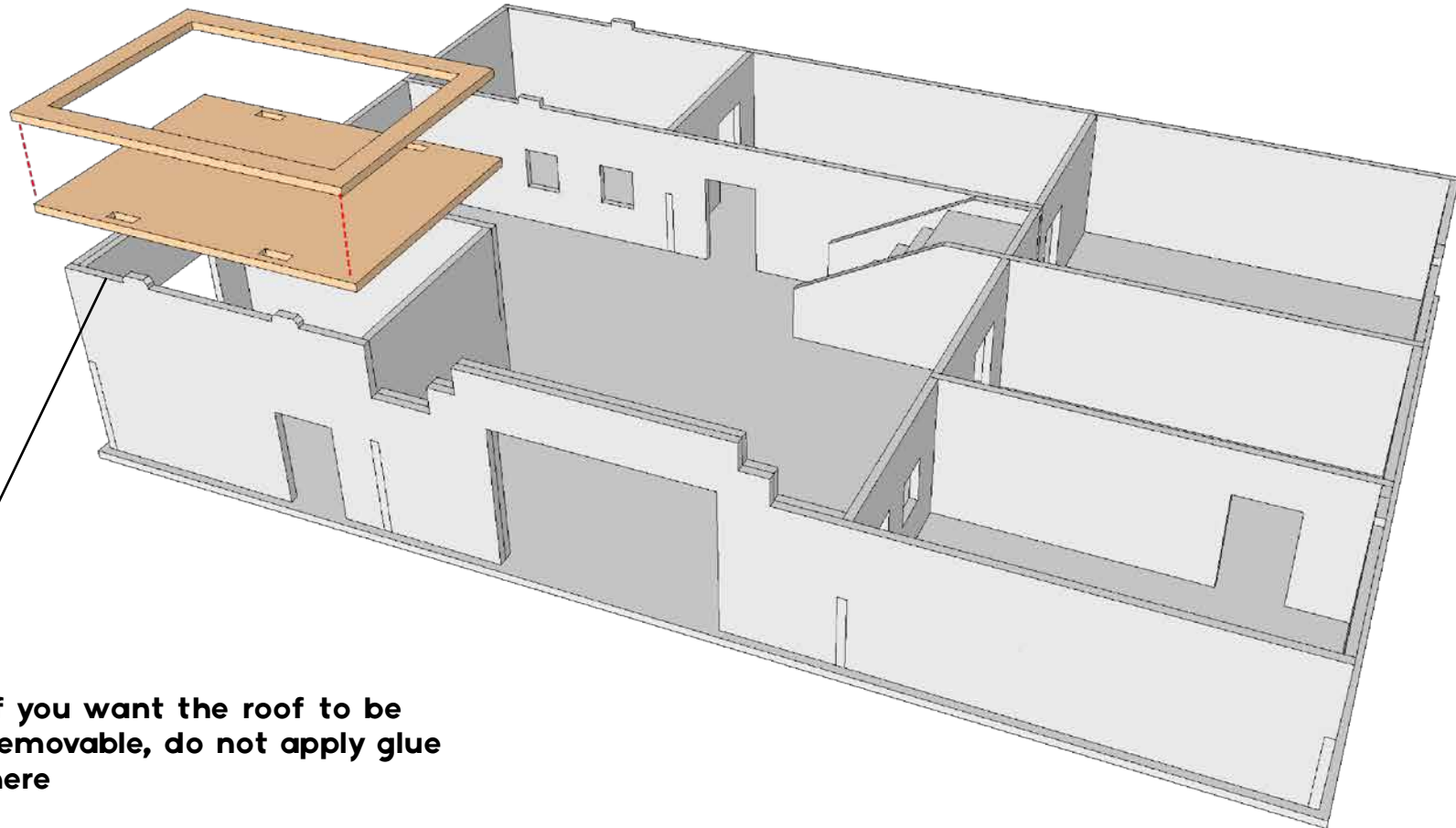
TRDB016 Large Compound 2



These parts do not 'slot' into anything. Simply apply to glue to the inside face and press it up against the pieces that are already in place.



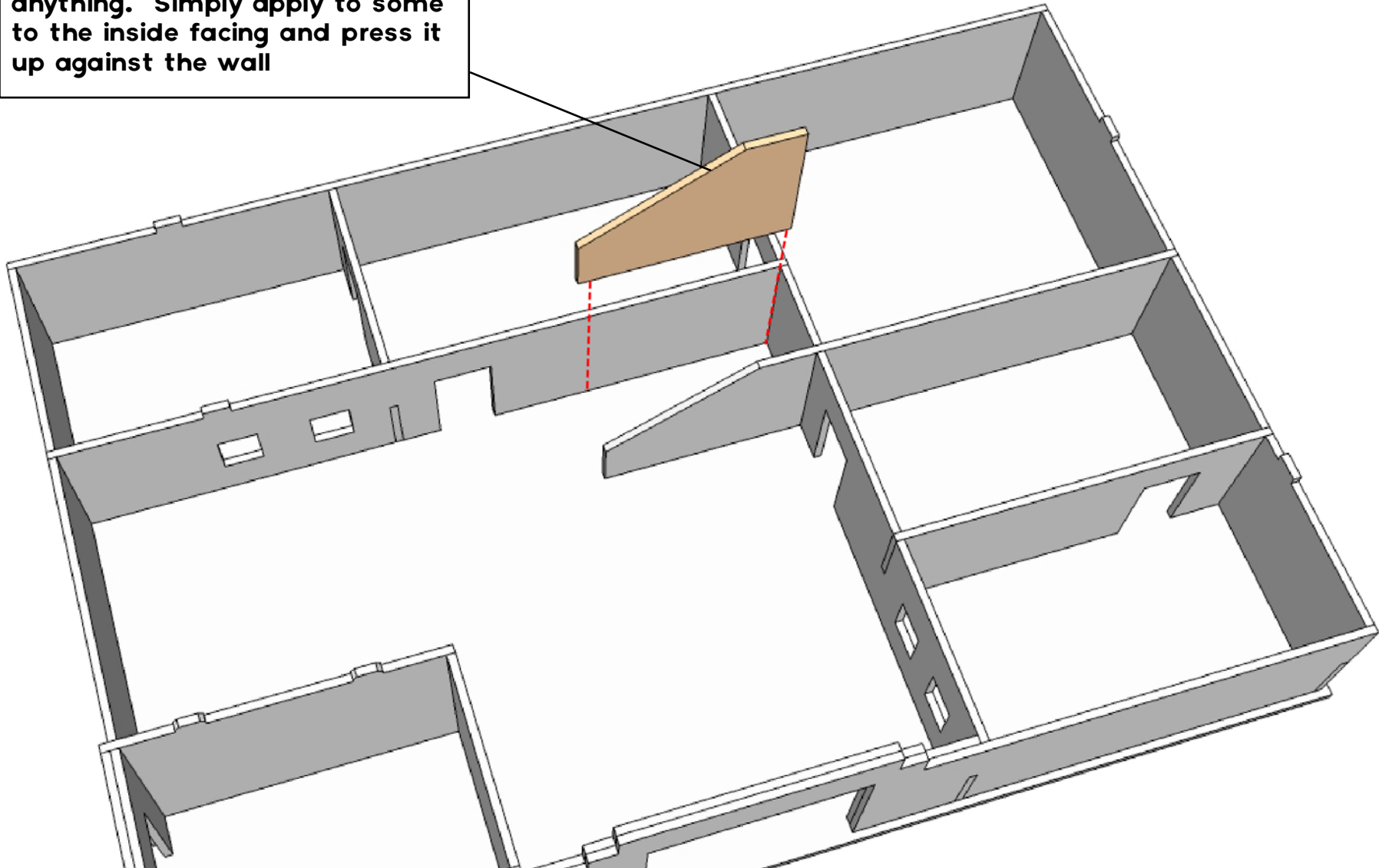
TRDB016 Large Compound 2



If you want the roof to be removable, do not apply glue here

TRDB016 Large Compound 2

This part does not 'plug' into anything. Simply apply to some to the inside facing and press it up against the wall

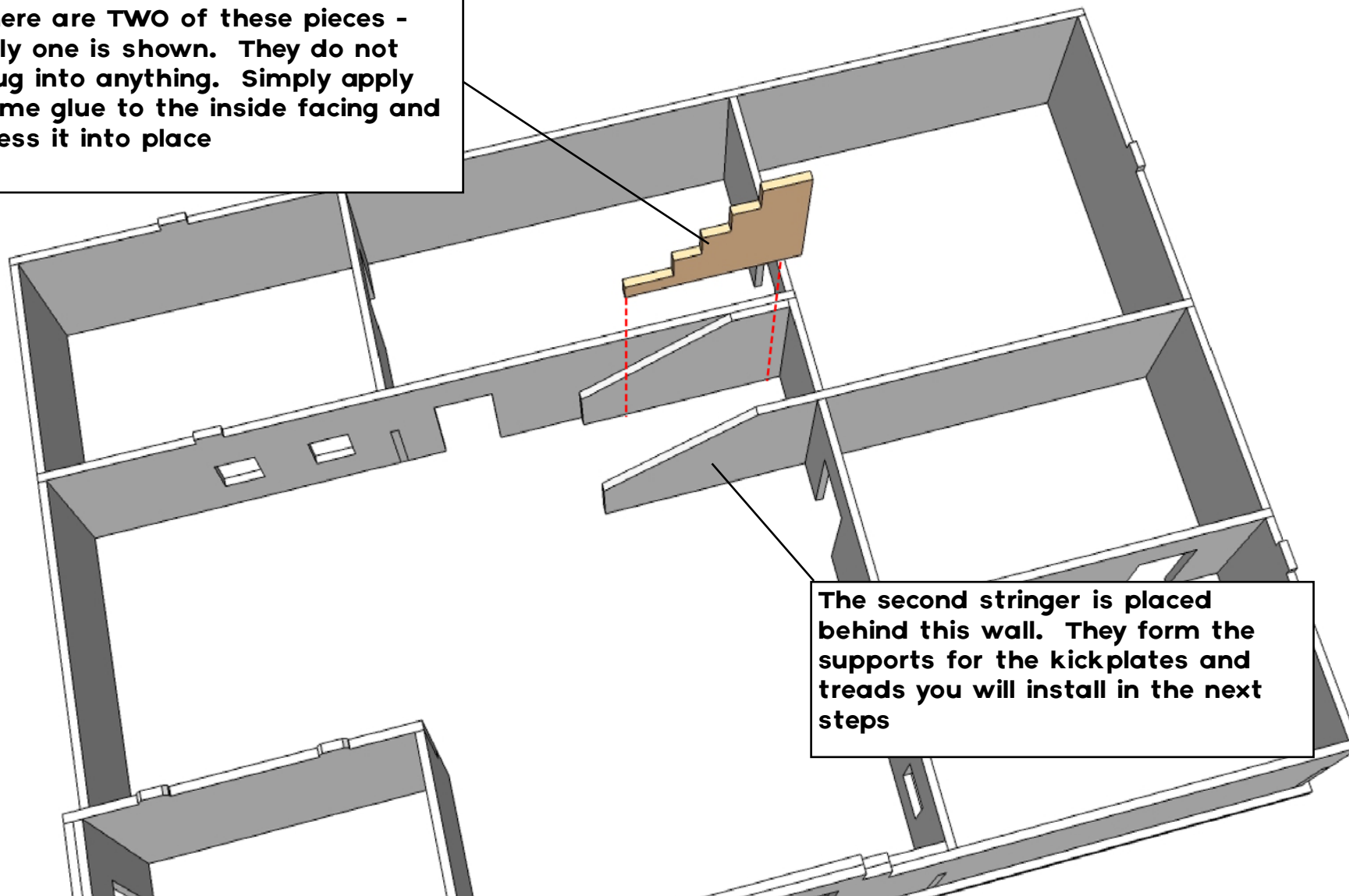


TRDB016 Large Compound 2



This is called a 'stringer'

There are TWO of these pieces - only one is shown. They do not plug into anything. Simply apply some glue to the inside facing and press it into place



The second stringer is placed behind this wall. They form the supports for the kickplates and treads you will install in the next steps

TRDB016 Large Compound 2

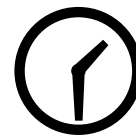


OPTIONAL - these parts are called 'kickplates'. You do not need to install them, but they help to 'finish' off the look of the stairs.

Apply glue on the back of these pieces, here and here ...

... and press them into place here

This part is a different size than the other 4 ... place this piece in first and then work your way up. We find it easier to apply glue to the inside edges and press it into place



Wait for these parts to dry a little before moving on. The supports for the stair treads are narrow and can be fiddly so you want these to be secured before continuing

TRDB016 Large Compound 2



These are the 'stair treads'. They can be fiddly to install as the supports underneath them are narrow and you can easily knock them out of place if you rush.

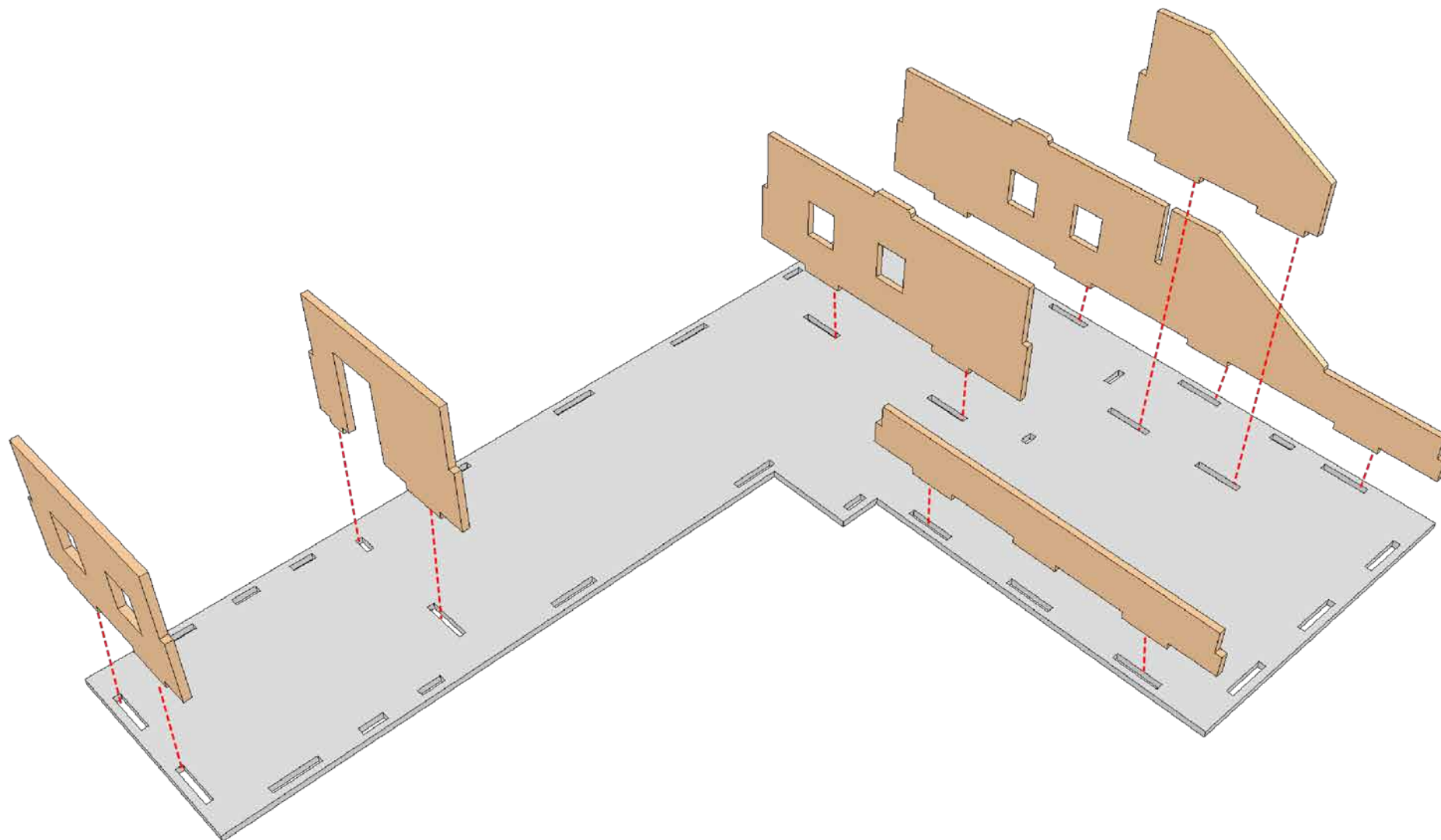
We recommend using super-glue for this part of the process.

The top tread is a different size than the others. It also has a specific orientation ... make sure you 'dry fit' it first before applying any glue

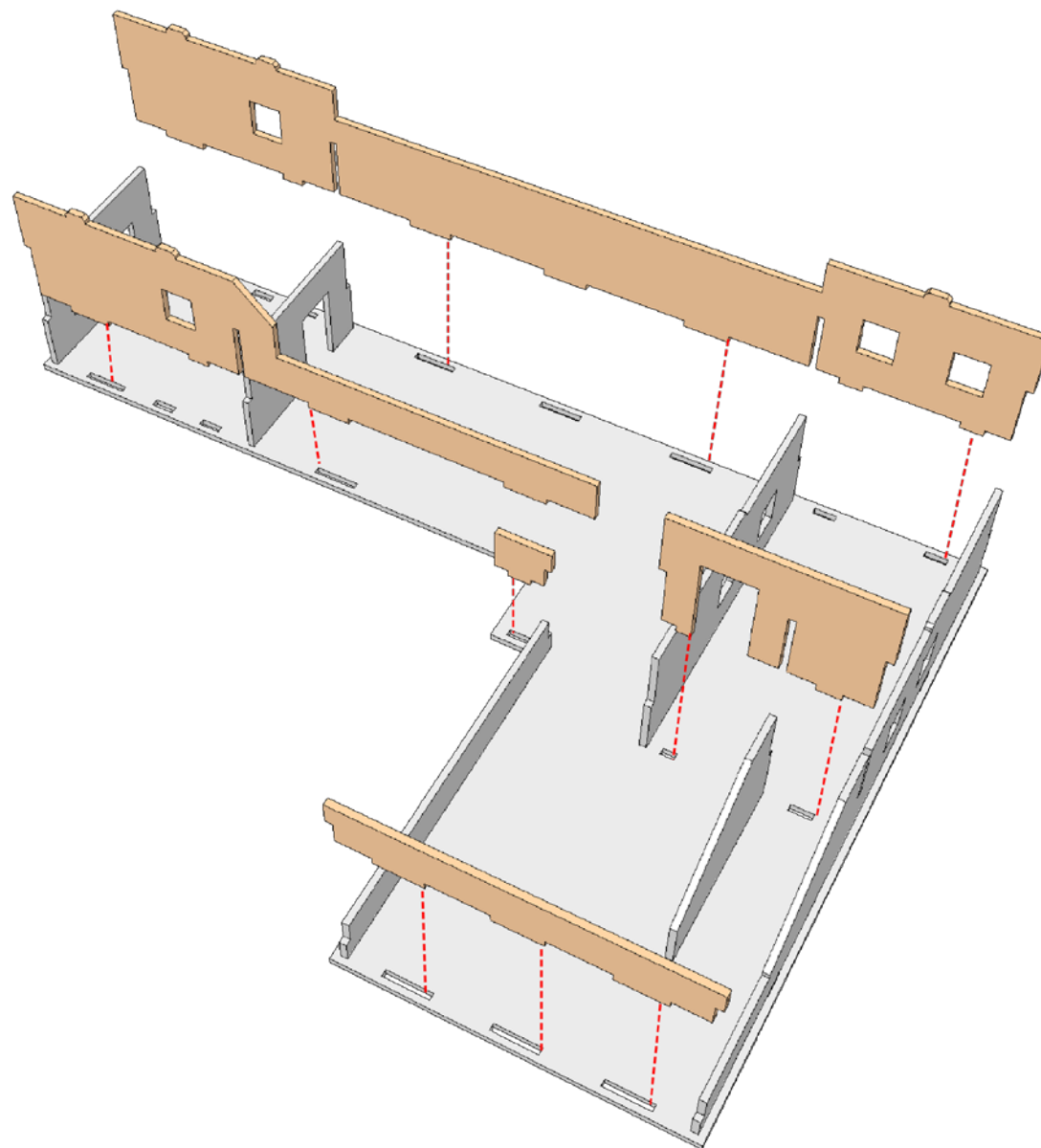


Apply super-glue to the support along its top face and then press the tread into place focussing your pressure towards the back of the tread. There is nothing under the front of the tread, if you press there it will tilt forward!

TRDB016 Large Compound 2



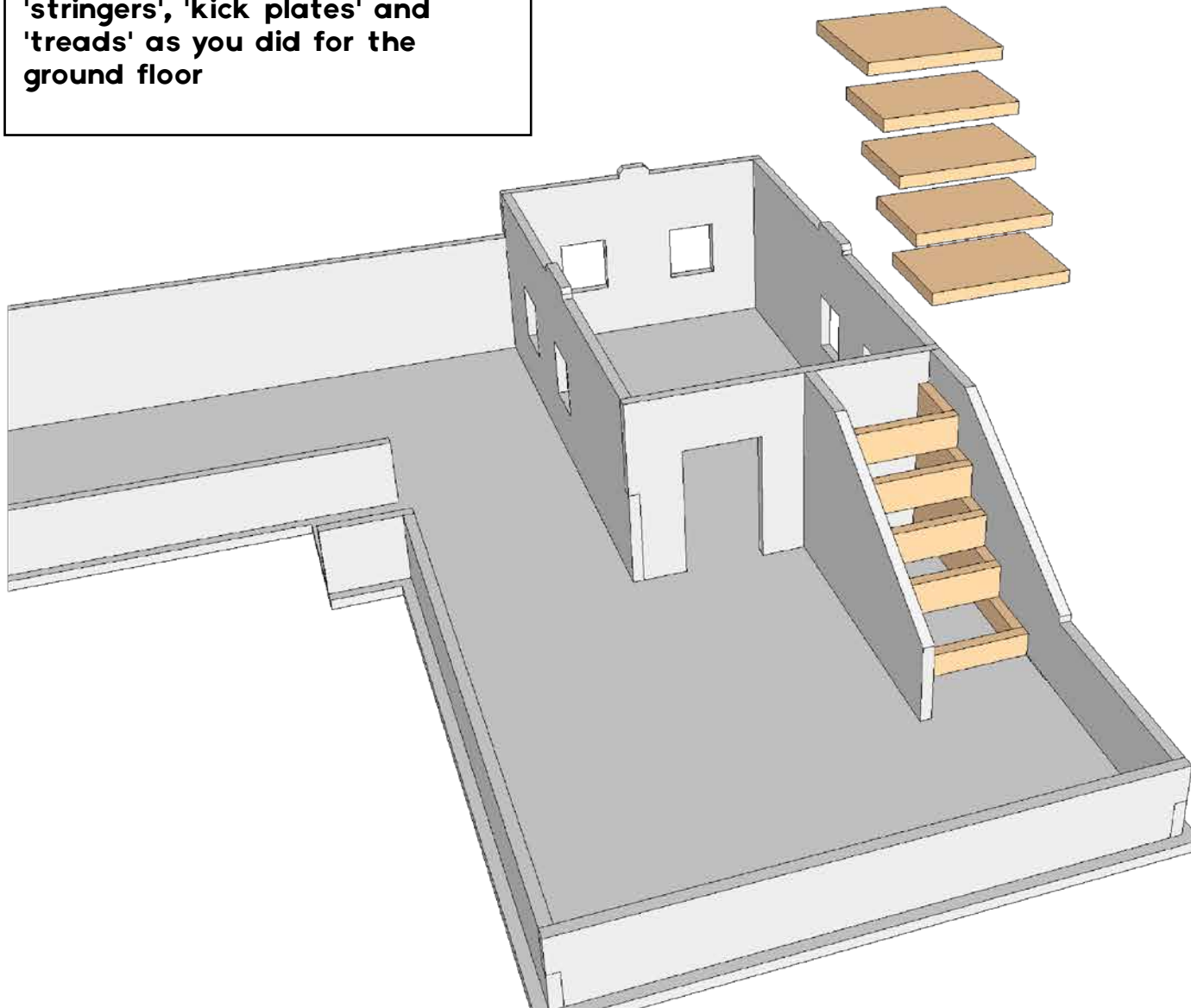
TRDB016 Large Compound 2



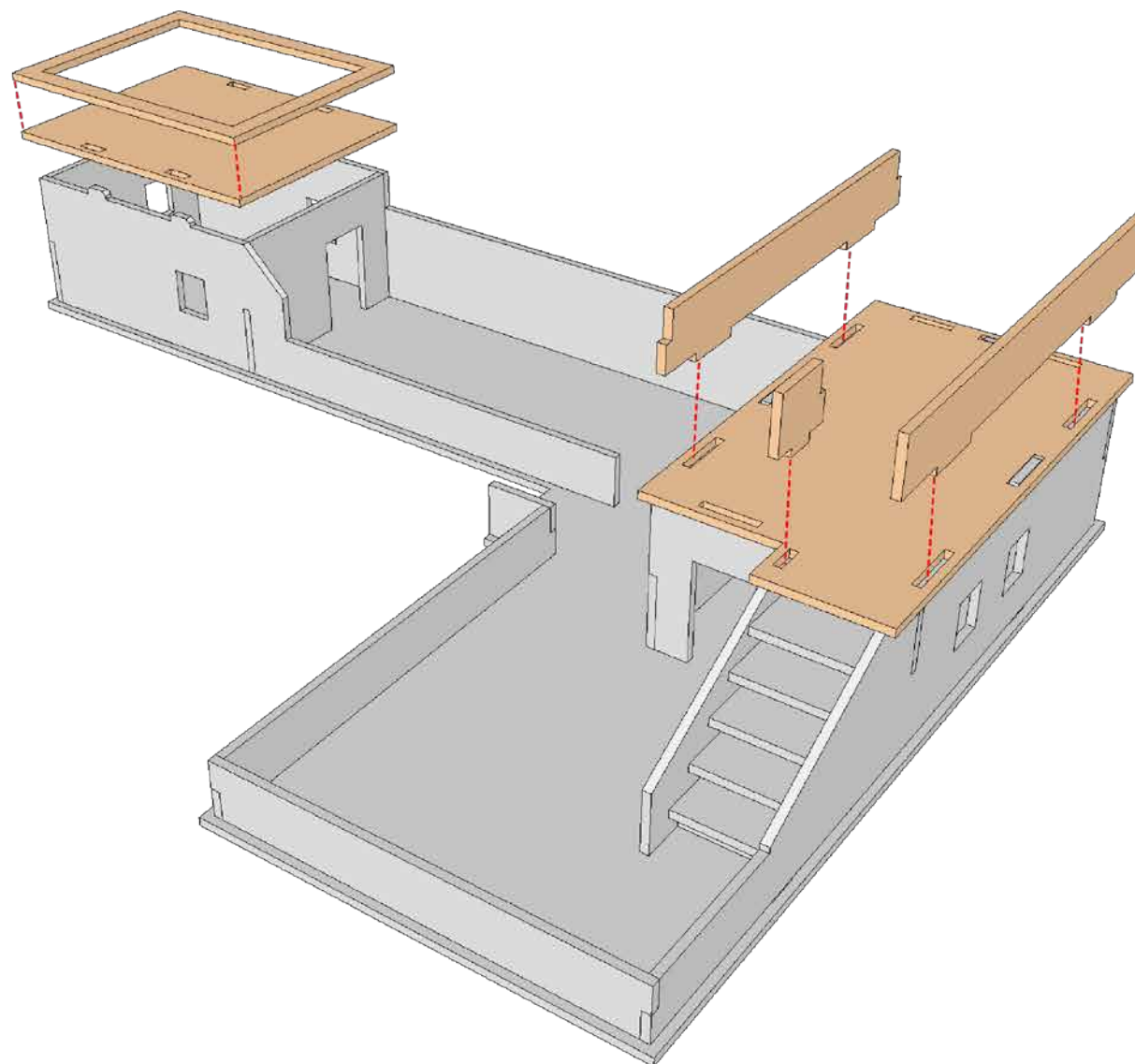
TRDB016 Large Compound 2



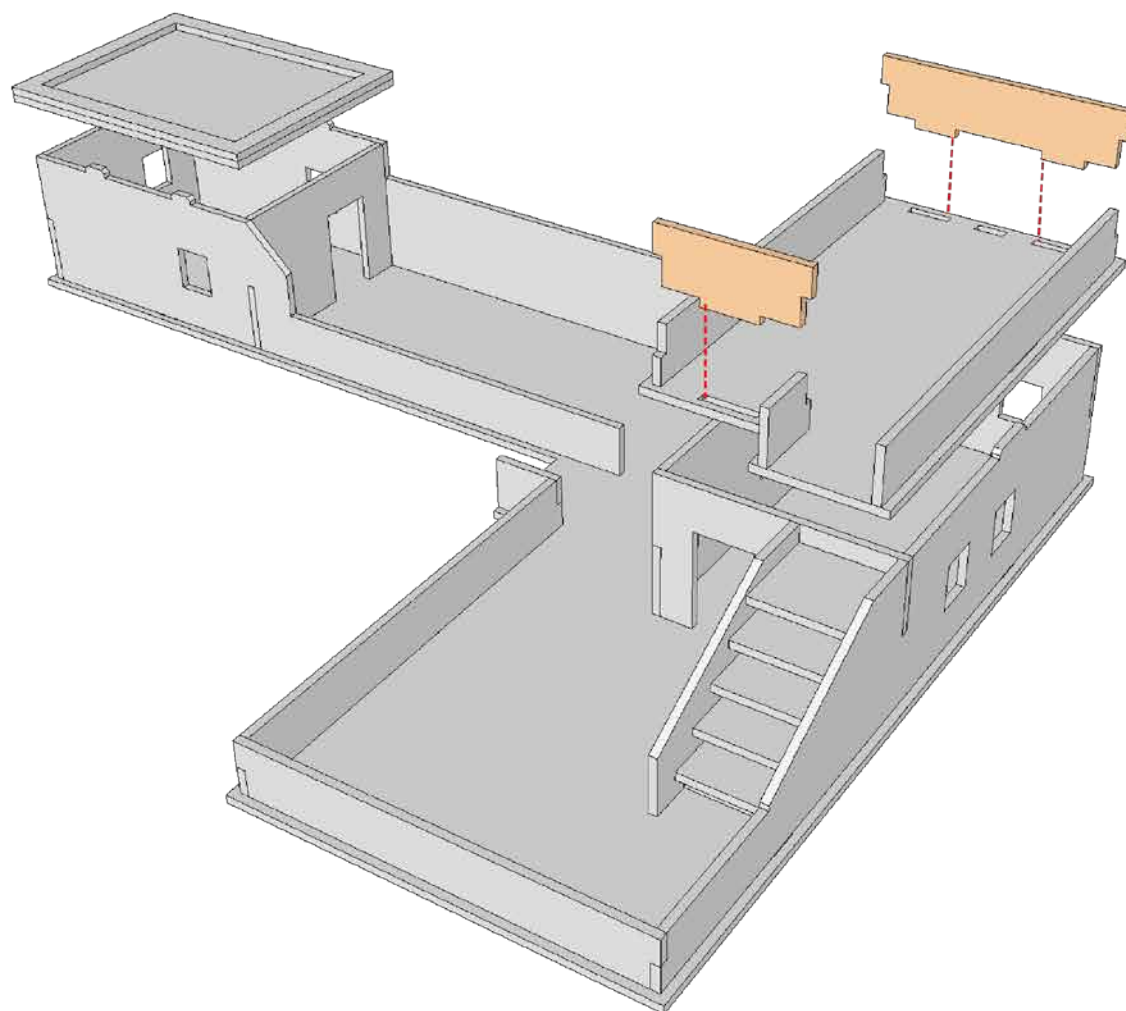
Follow the same steps you did before when installing the 'stringers', 'kick plates' and 'treads' as you did for the ground floor



TRDB016 Large Compound 2



TRDB016 Large Compound 2



TRDB016 Large Compound 2

