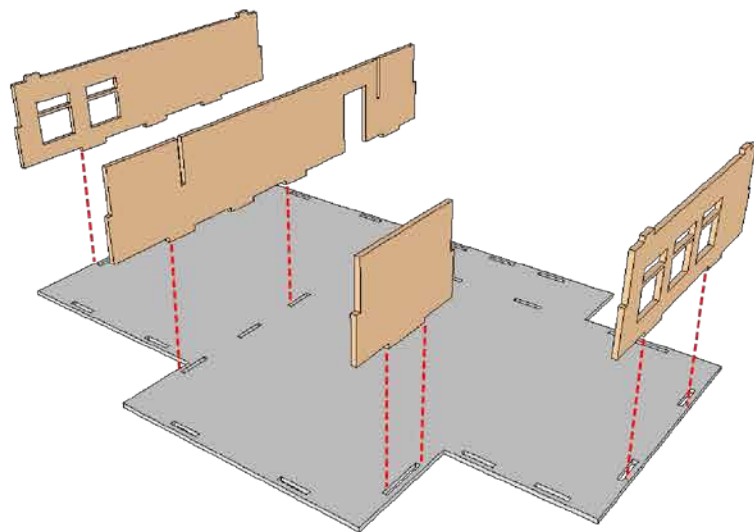


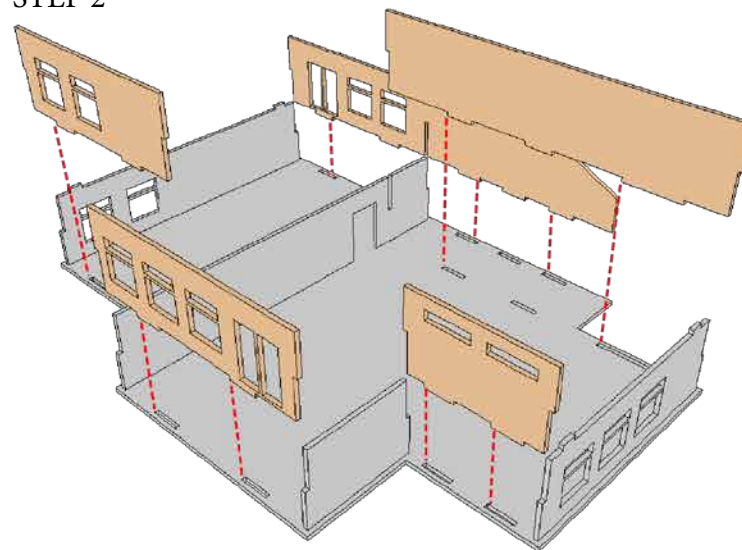
MERIDIAN APARTMENTS - TRAB003



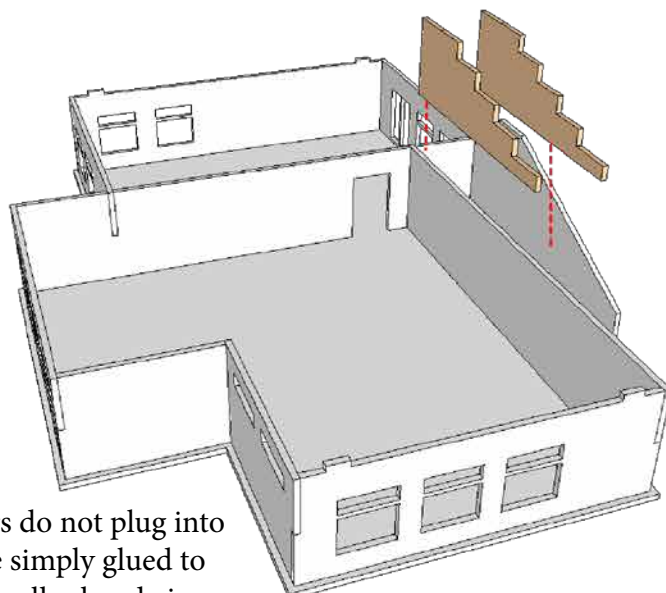
STEP 1



STEP 2

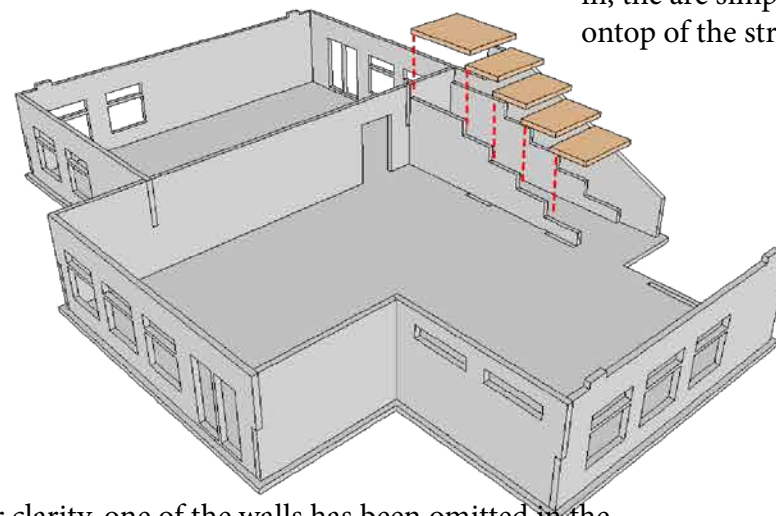


STEP 3



The stair stringers do not plug into the base, they are simply glued to the inside of the walls already in place

STEP 4



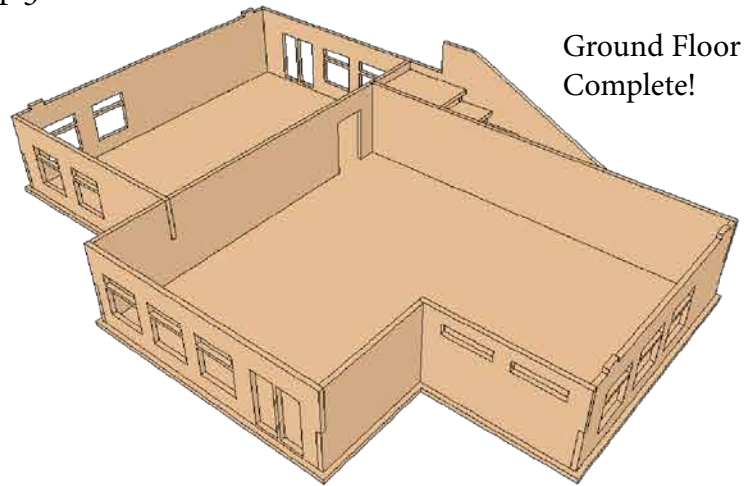
The stair treads do not plug in, they are simply glued on top of the stringers

*For clarity, one of the walls has been omitted in the instructions so you can see the placement of the stair treads

MERIDIAN APARTMENTS - TRAB003

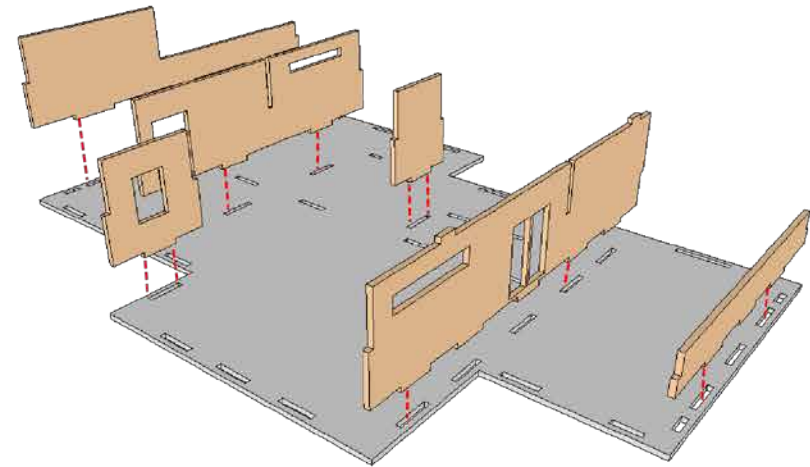


STEP 5

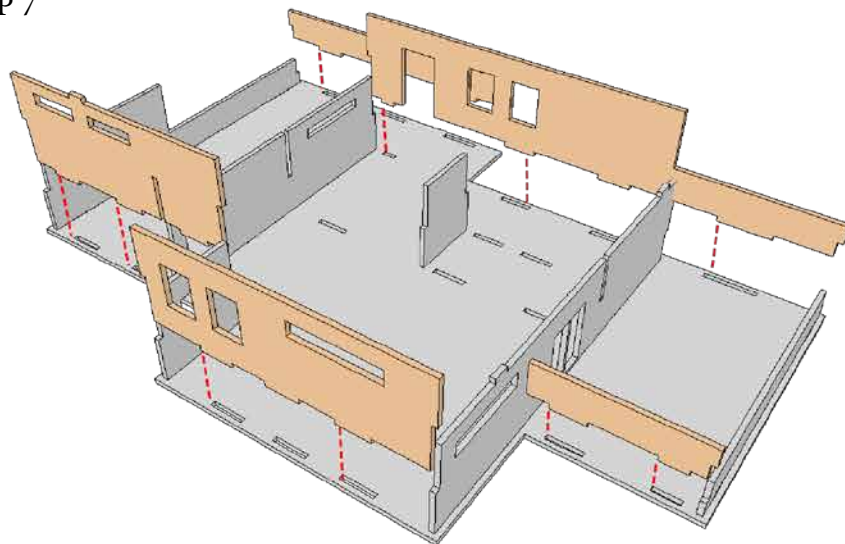


Ground Floor
Complete!

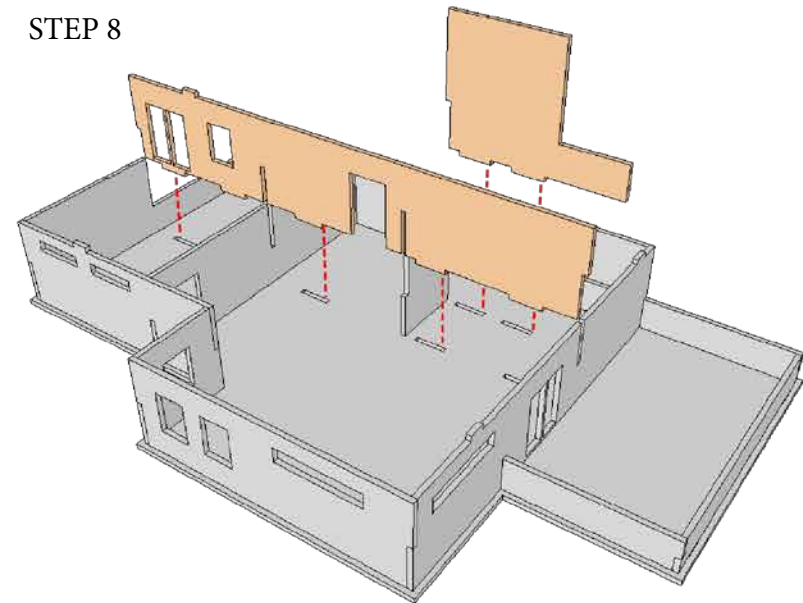
STEP 6



STEP 7



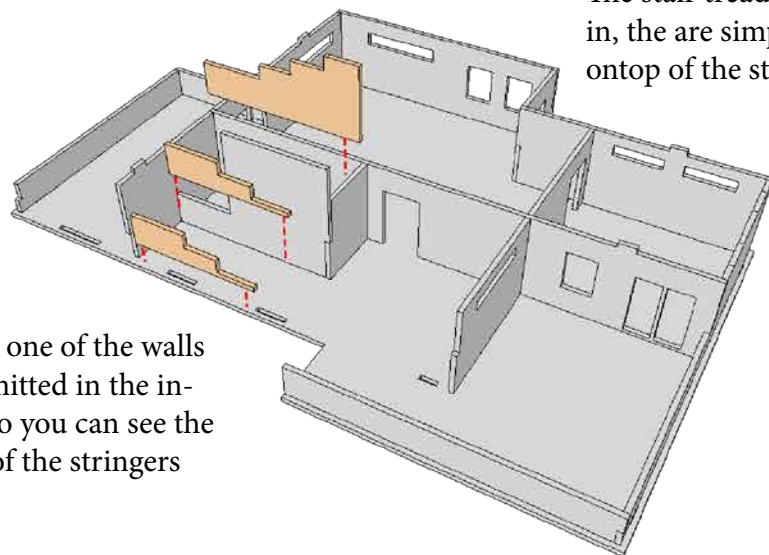
STEP 8



MERIDIAN APARTMENTS - TRAB003



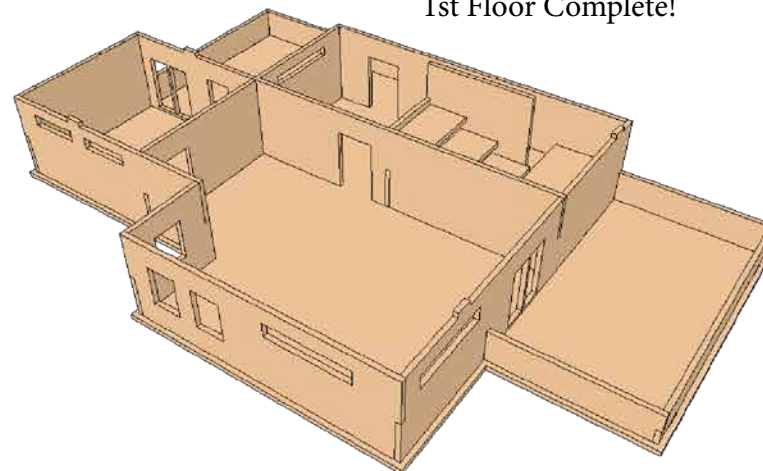
STEP 9



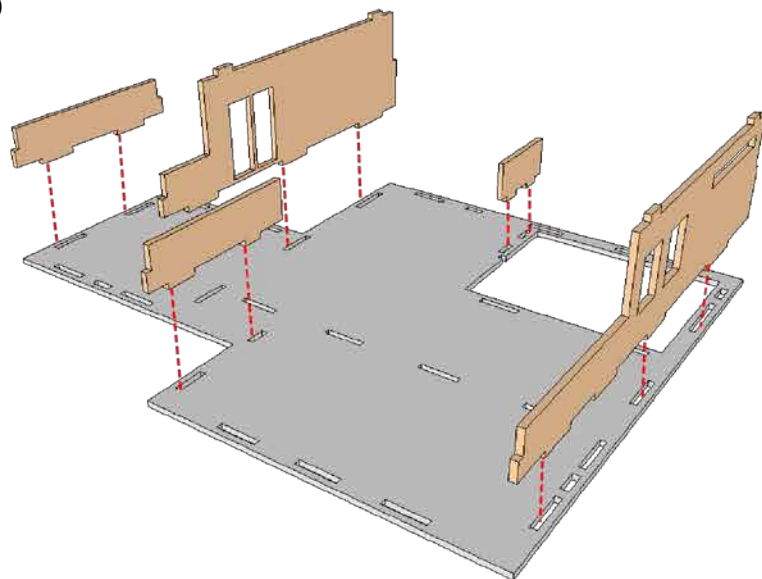
The stair treads do not plug in, they are simply glued on top of the stringers

*For clarity, one of the walls has been omitted in the instructions so you can see the placement of the stringers

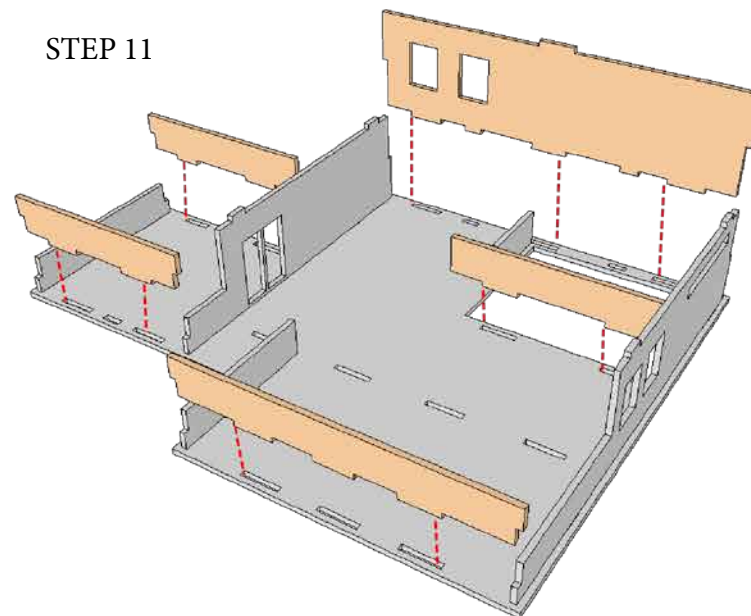
1st Floor Complete!



STEP 10



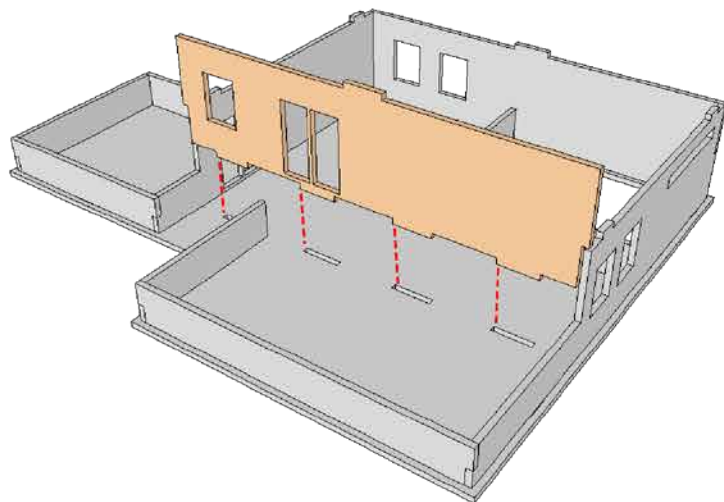
STEP 11



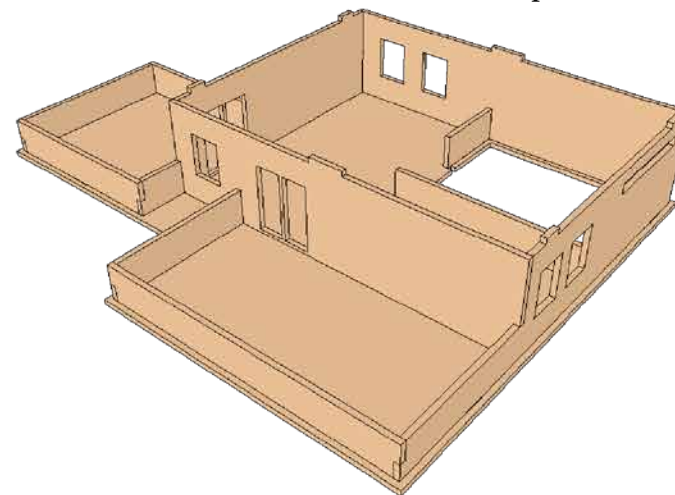
MERIDIAN APARTMENTS - TRAB003



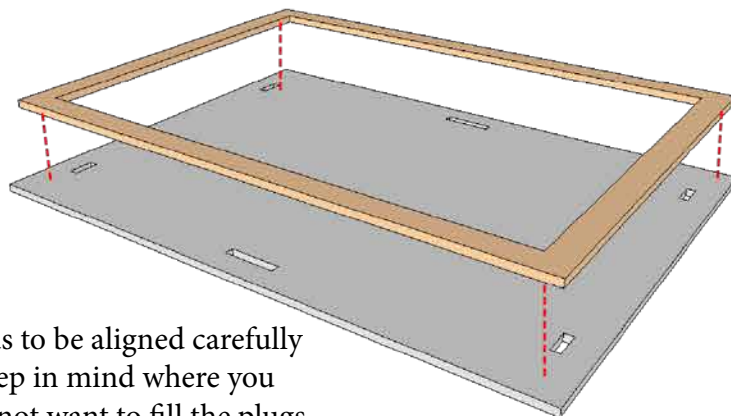
STEP 12



2nd Floor Complete!

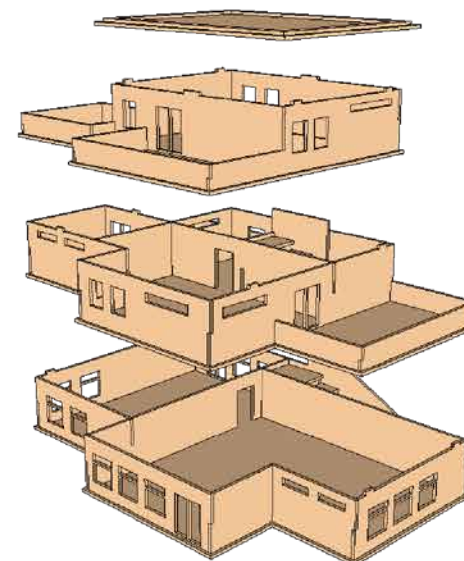


STEP 13



The roof trim needs to be aligned carefully over the plugs. Keep in mind where you place glue, you do not want to fill the plugs with glue, or glue the roof to the floor below accidentally

The floors stack



MERIDIAN APARTMENTS - TRAB003



CONGRATULATIONS!

MODEL COMPLETE!

