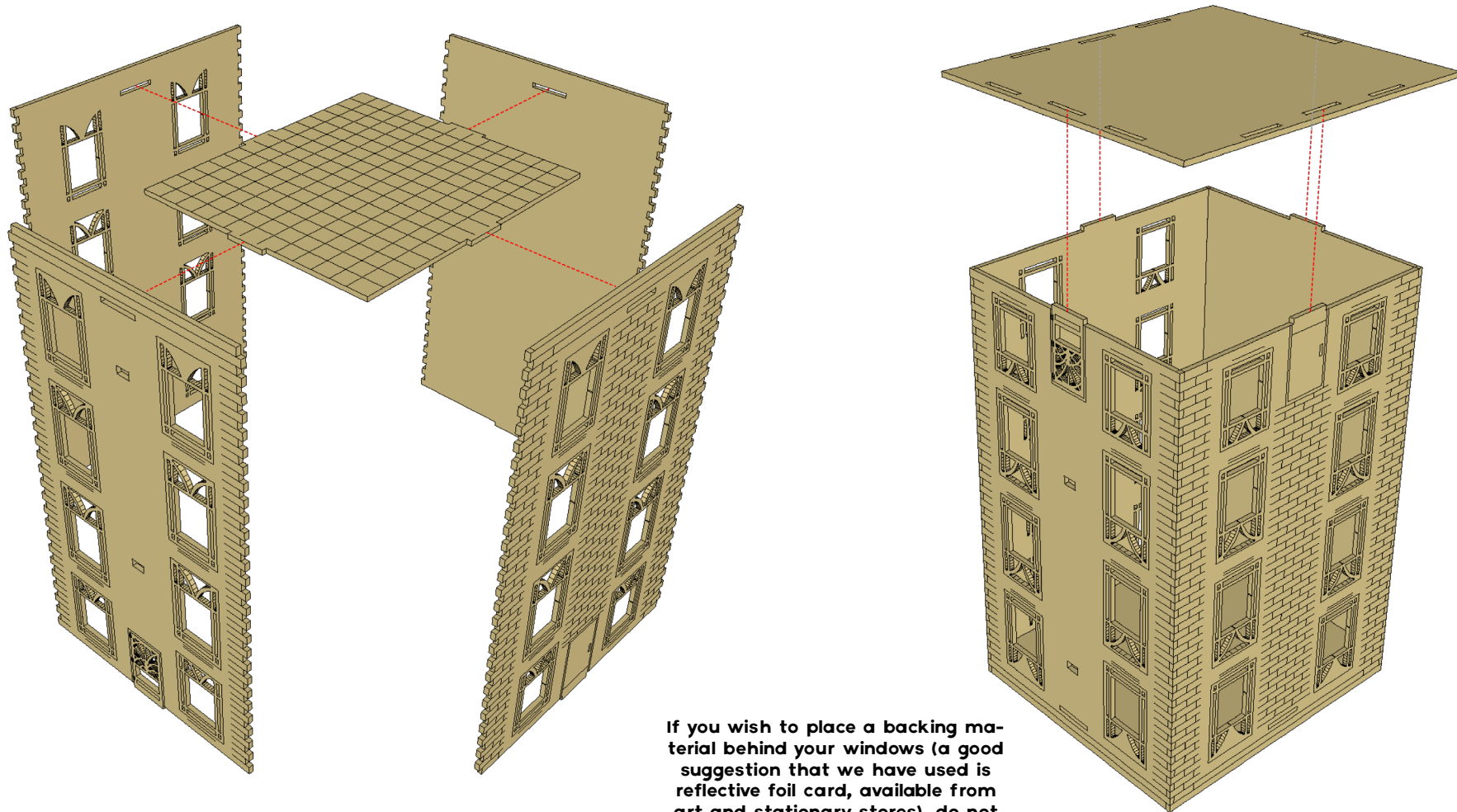


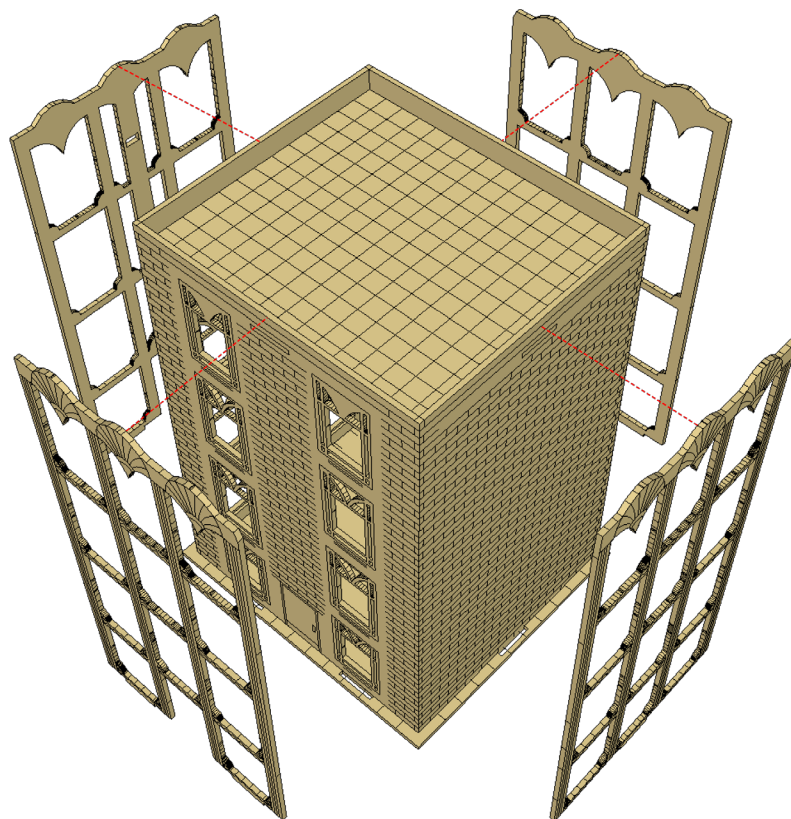
MORRISON BUILDING ASSEMBLY INSTRUCTIONS

We have found that a large elastic band helps in holding the building together at this stage for drying

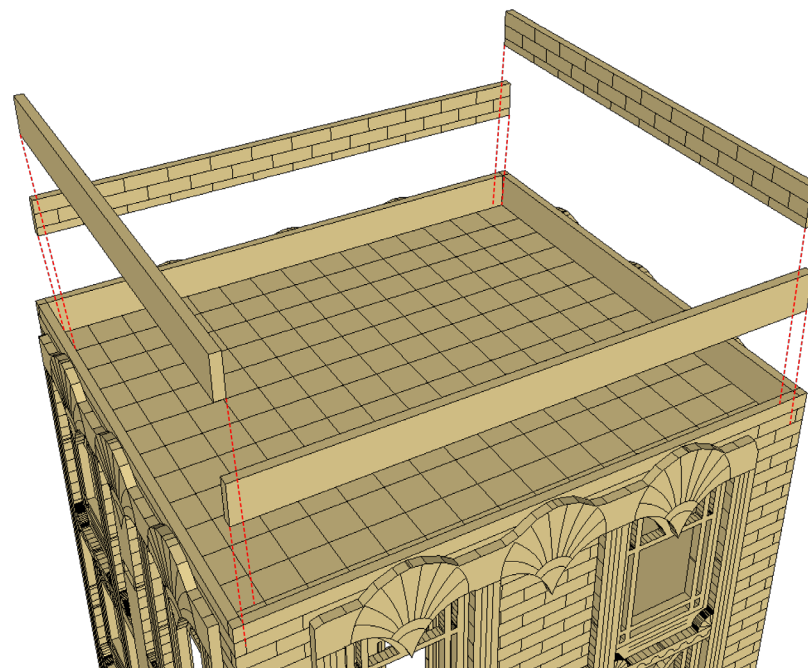


If you wish to place a backing material behind your windows (a good suggestion that we have used is reflective foil card, available from art and stationary stores), do not glue the base in place at this time, wait until after painting the main building. You will still need to slot the base in place to assist with the gluing of the facade pieces however.

MORRISON BUILDING ASSEMBLY INSTRUCTIONS



We've found it useful to
Apply glue to the facade pieces, then slot
them into the holes on the base piece.
Make sure you have the correct facade
piece for the correct side (as some side
have doors and corresponding facades).
Small clamps or large elastic bands also
help with securing the facade pieces
while they dry



Find the longest piece of roof trim, then dry
fit to the roof before gluing to ensure you
glue the correct pieces to there correspond-
ing sides as the building is not square

MORRISON BUILDING ASSEMBLY INSTRUCTIONS

