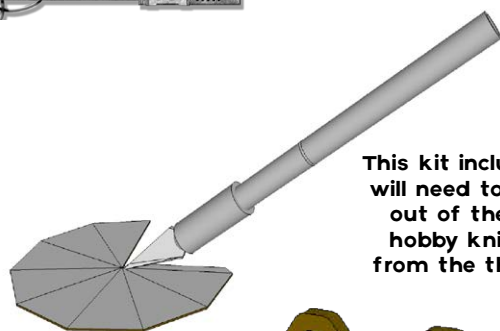
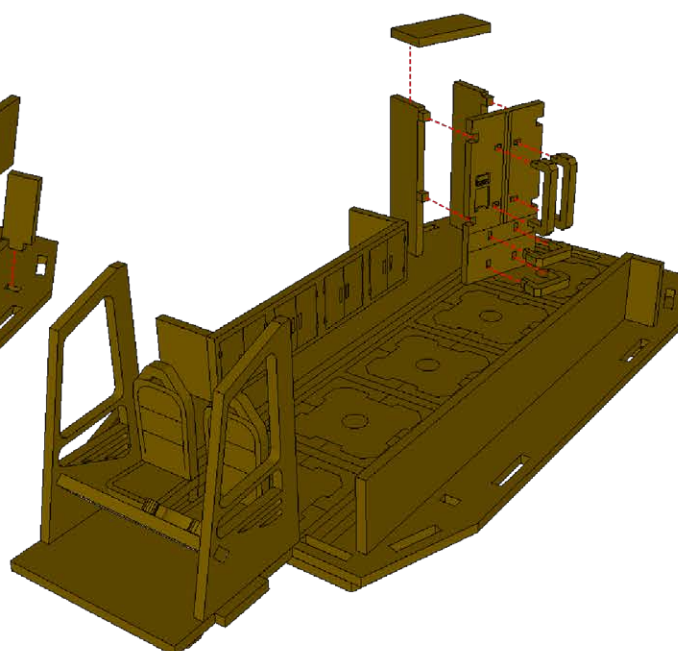
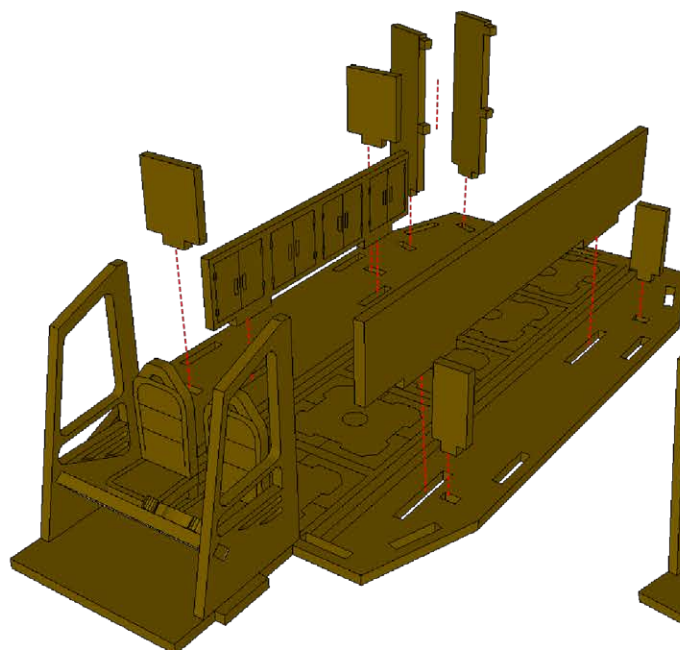
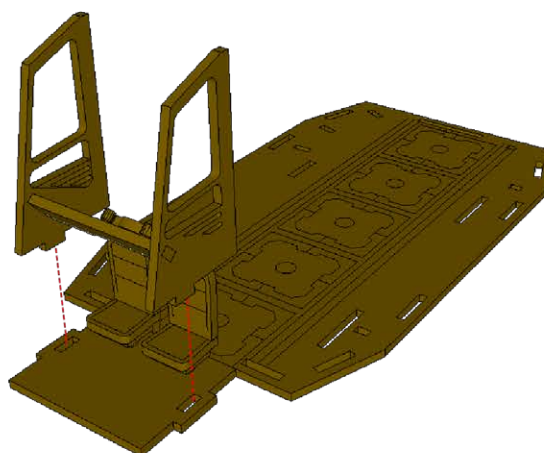
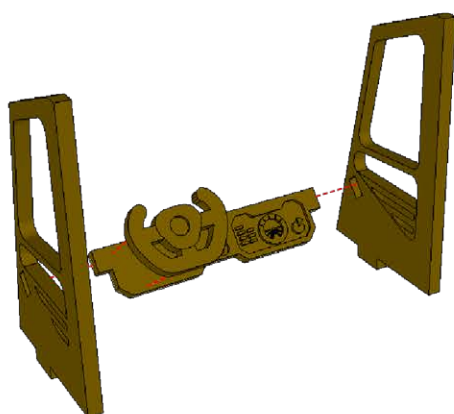
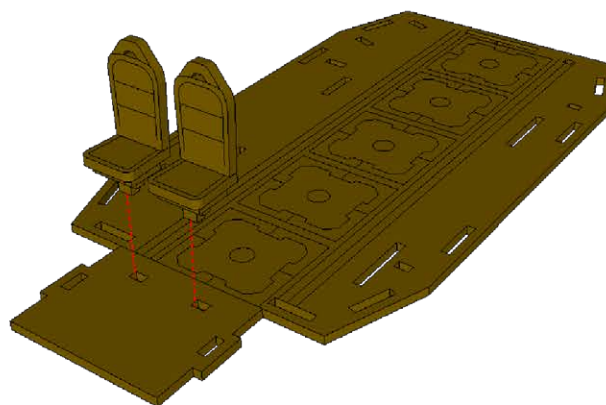
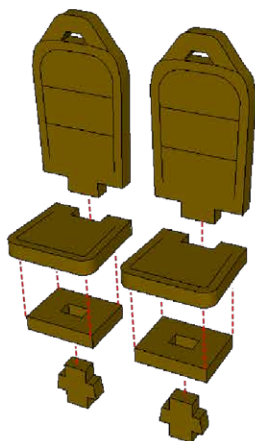


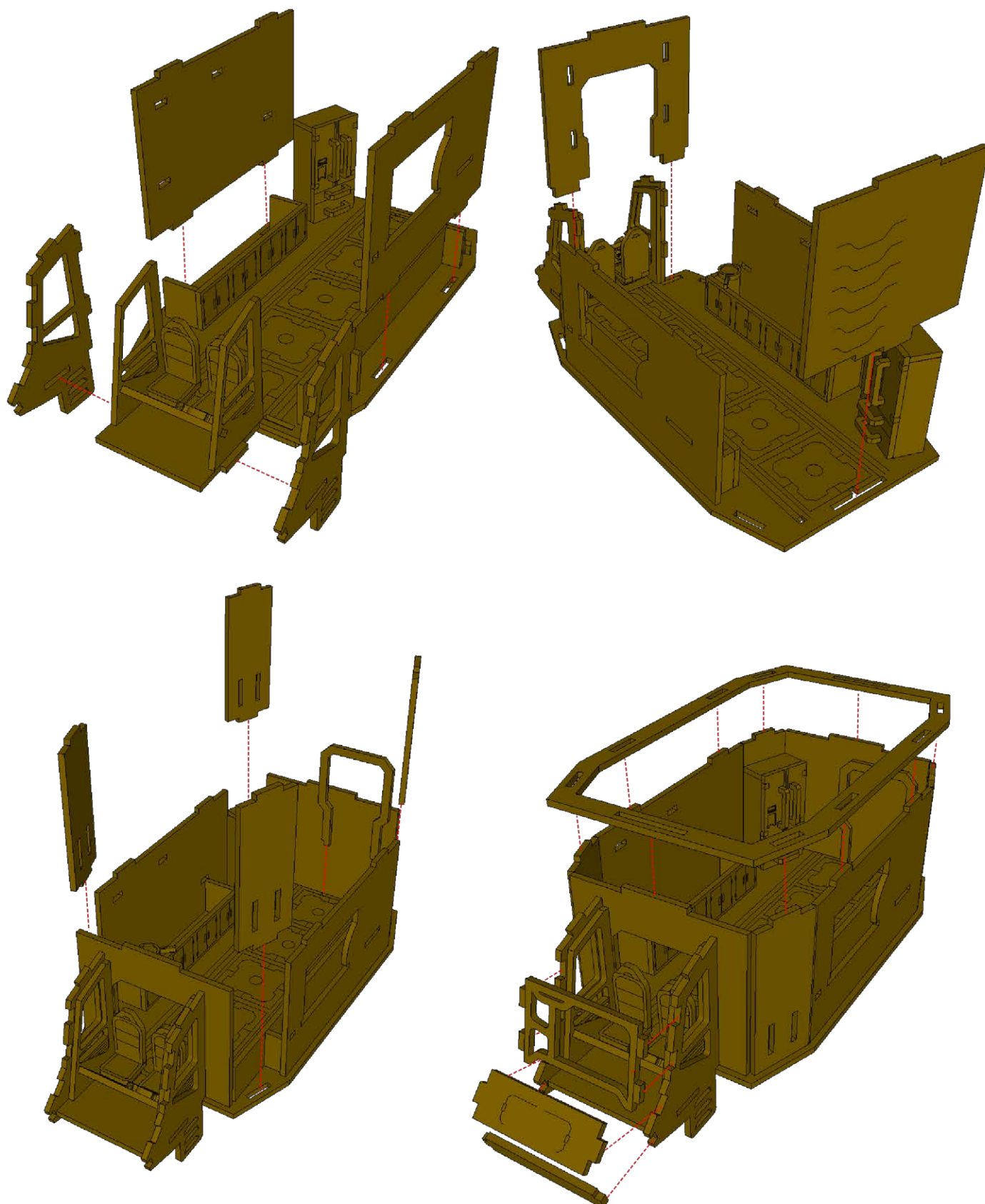
LITTLE RAMEN VFD-80 INSTRUCTIONS



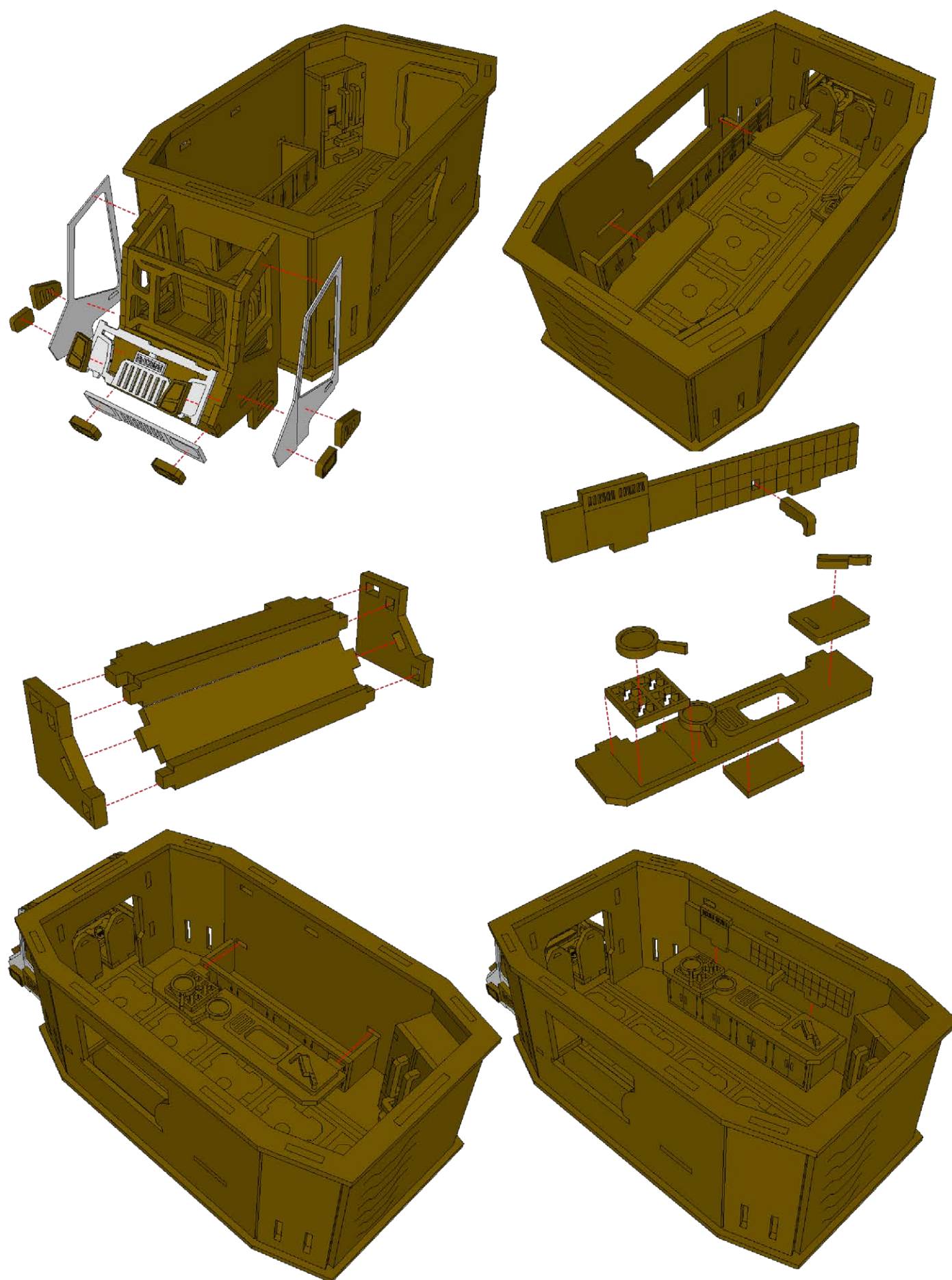
This kit includes card parts. These will need to be carefully trimmed out of the sheet. Use a sharp hobby knife to free the pieces from their cardboard prison!

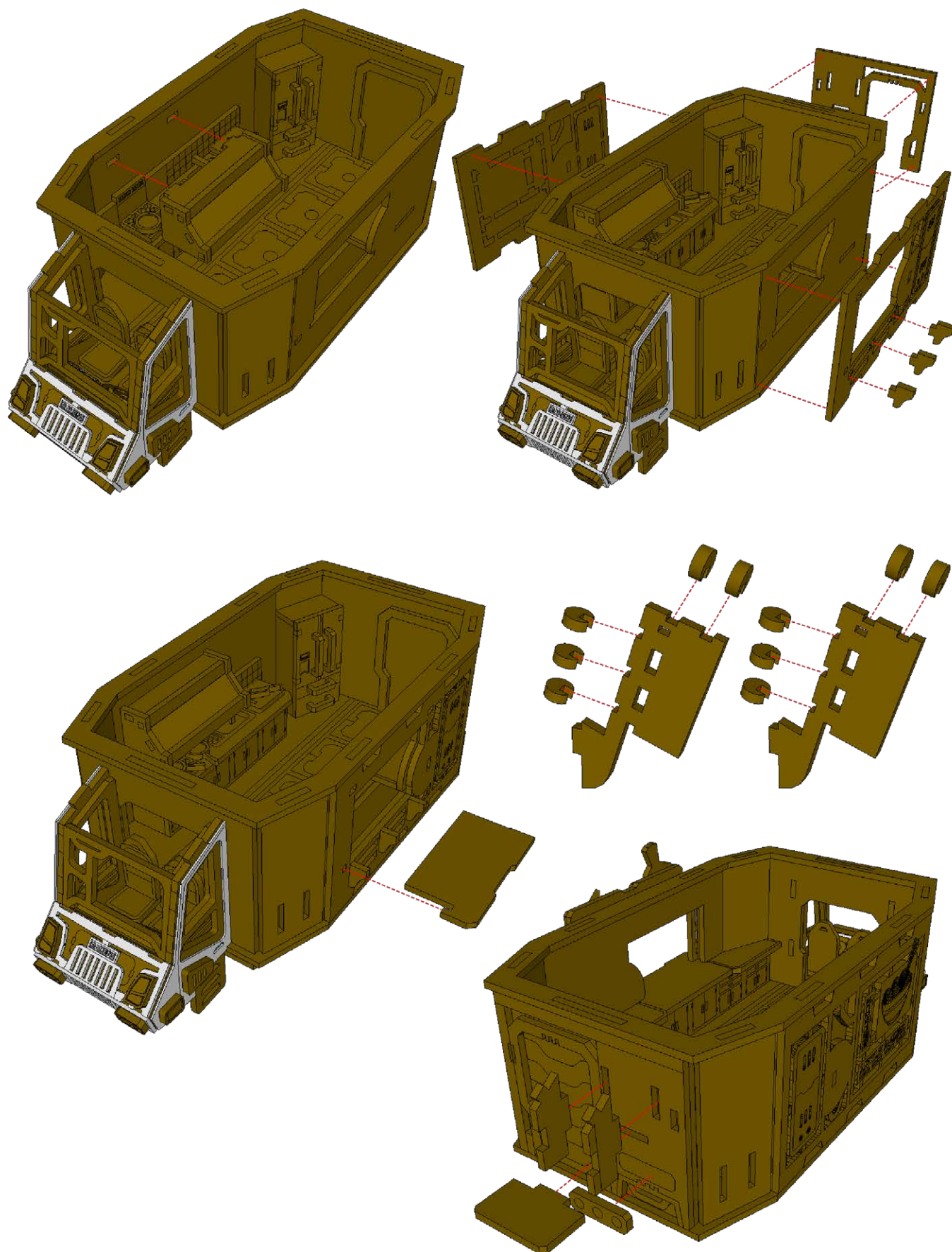
This is a detailed kit with many parts. It's not difficult to assemble, but it will take some patience. Take your time and enjoy the process. You might find it helpful to paint some of the pieces before assembly or in sub assemblies

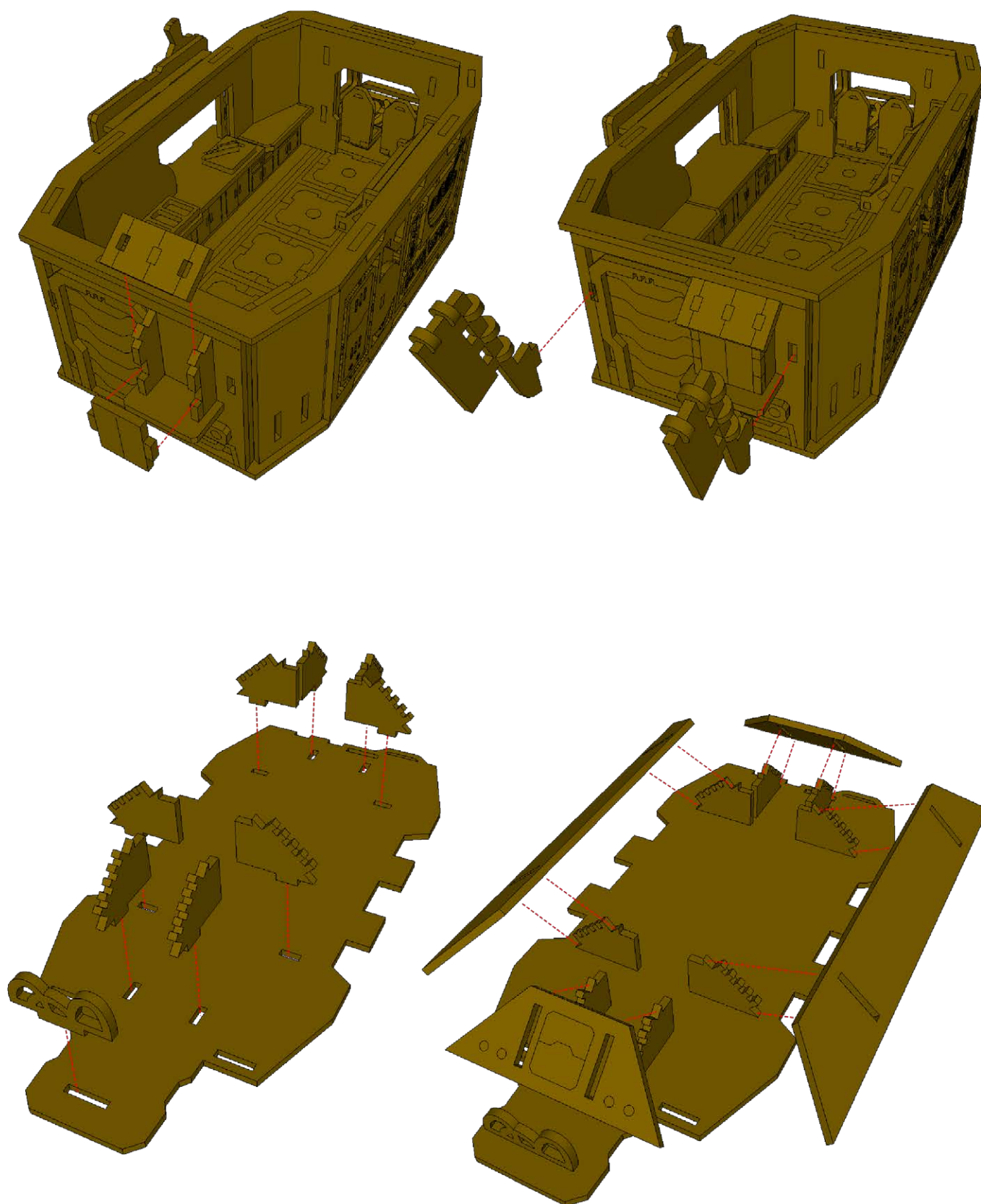


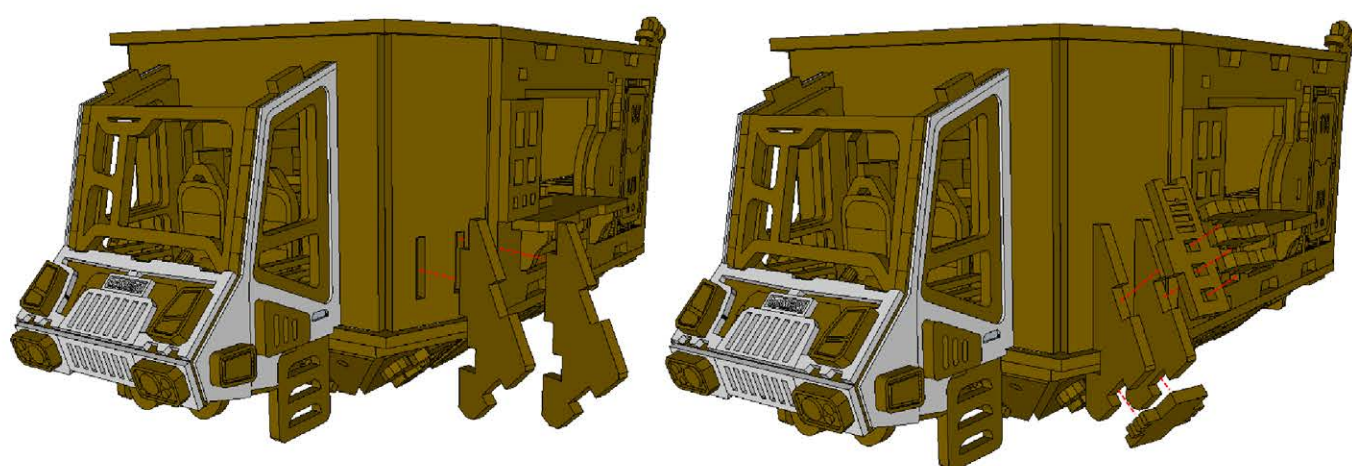
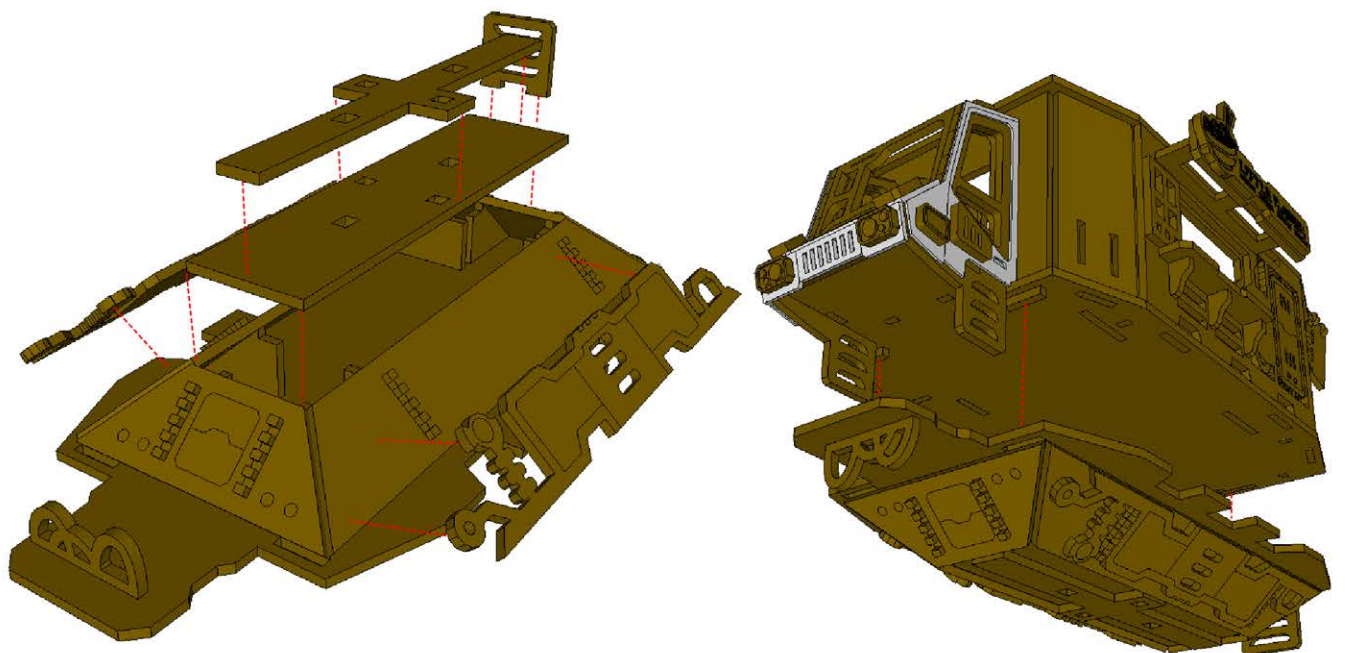


LITTLE RAMEN VFD-80 INSTRUCTIONS

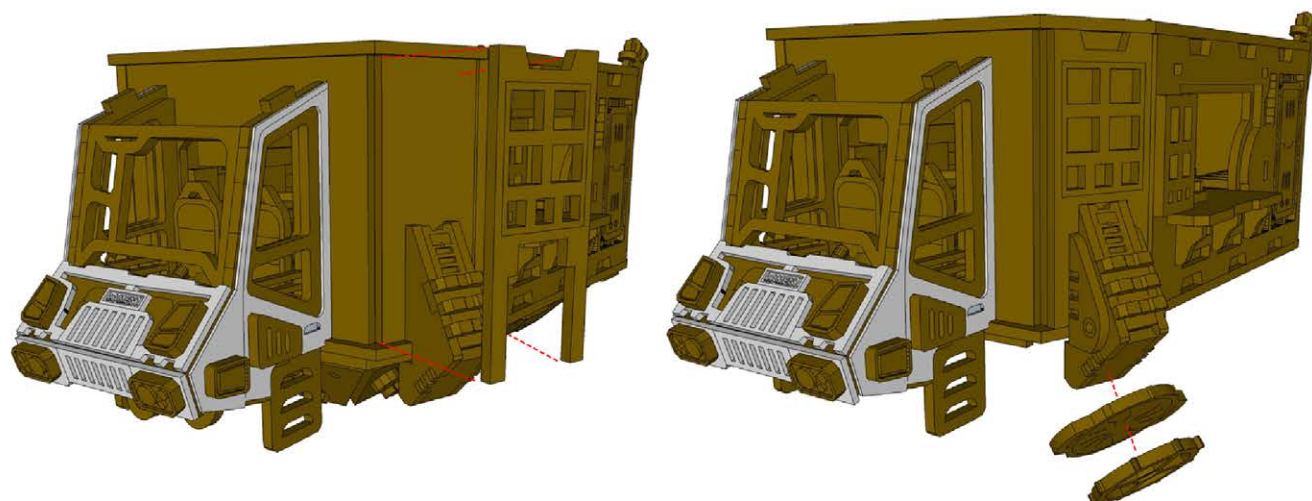


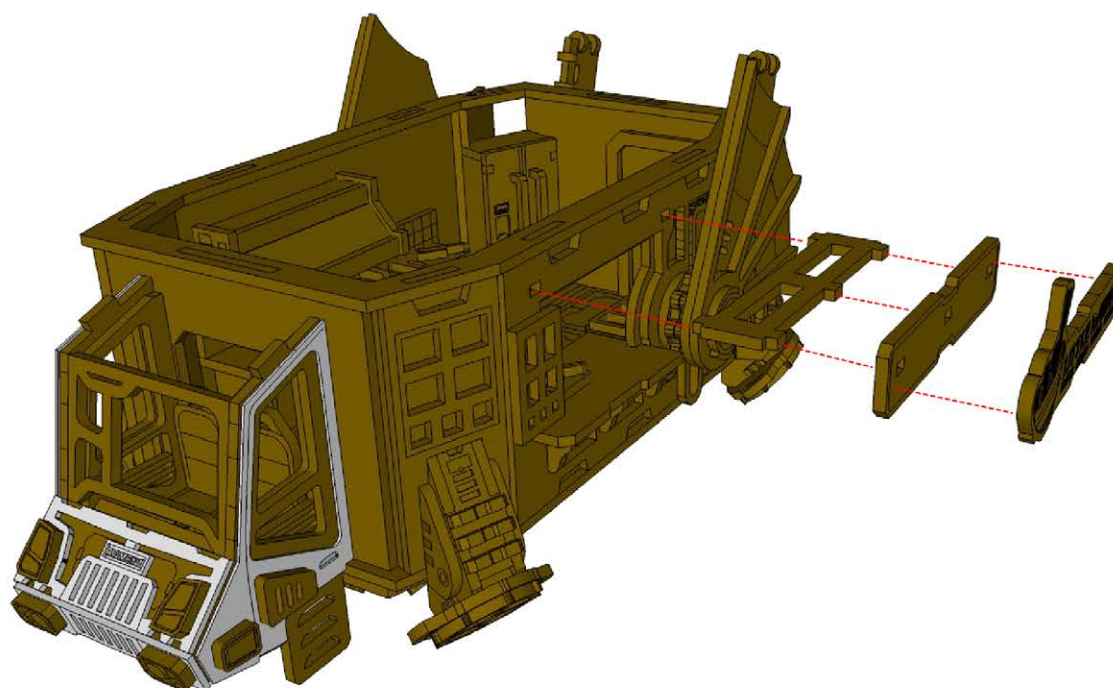
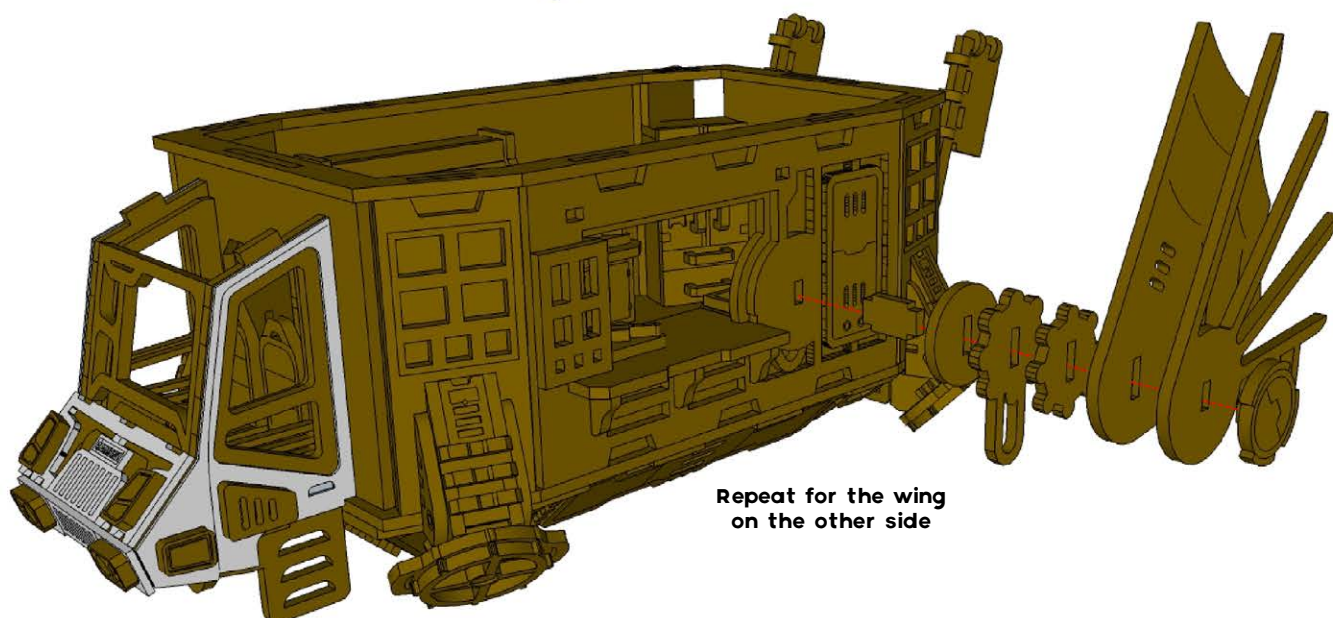
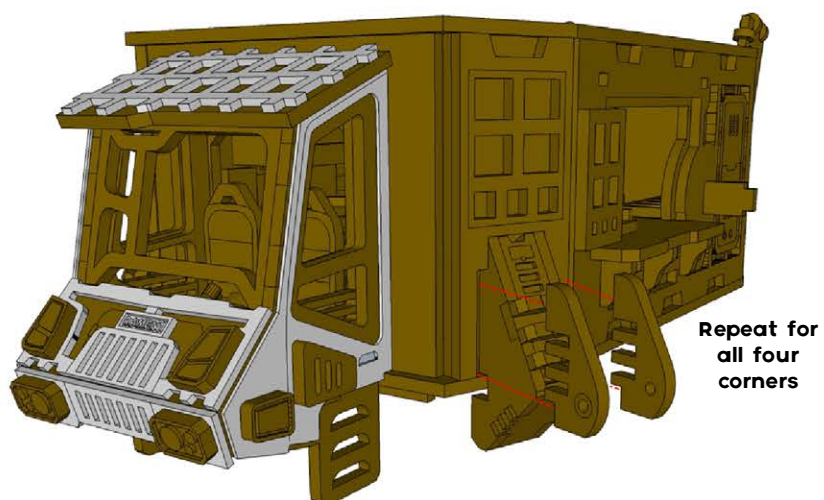


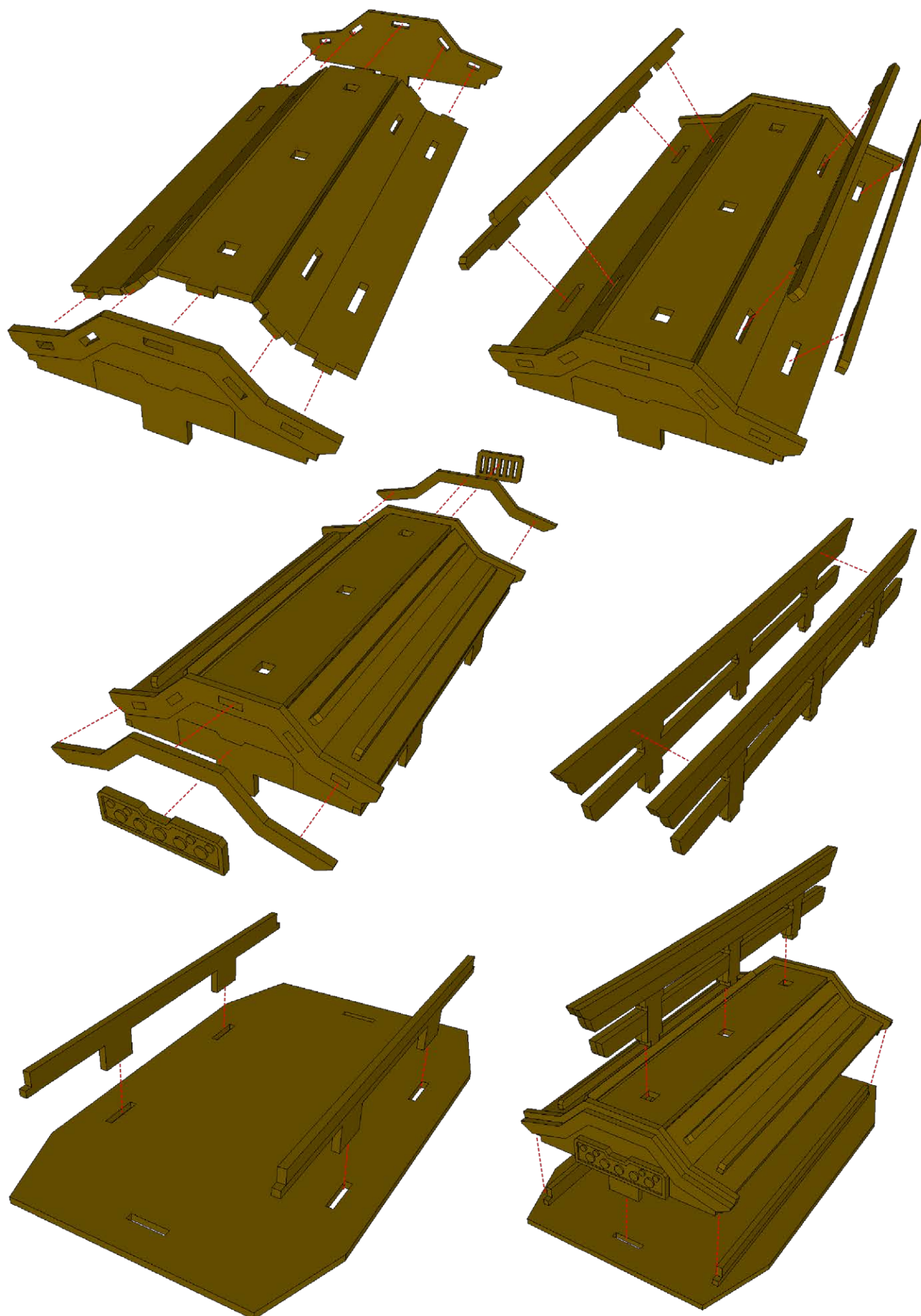




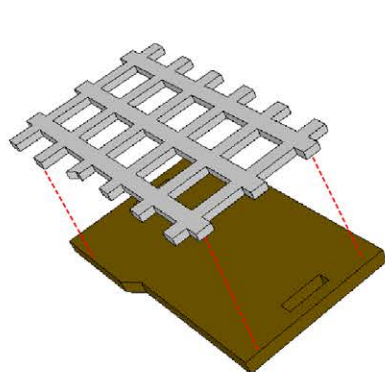
Repeat these steps
for all four corners



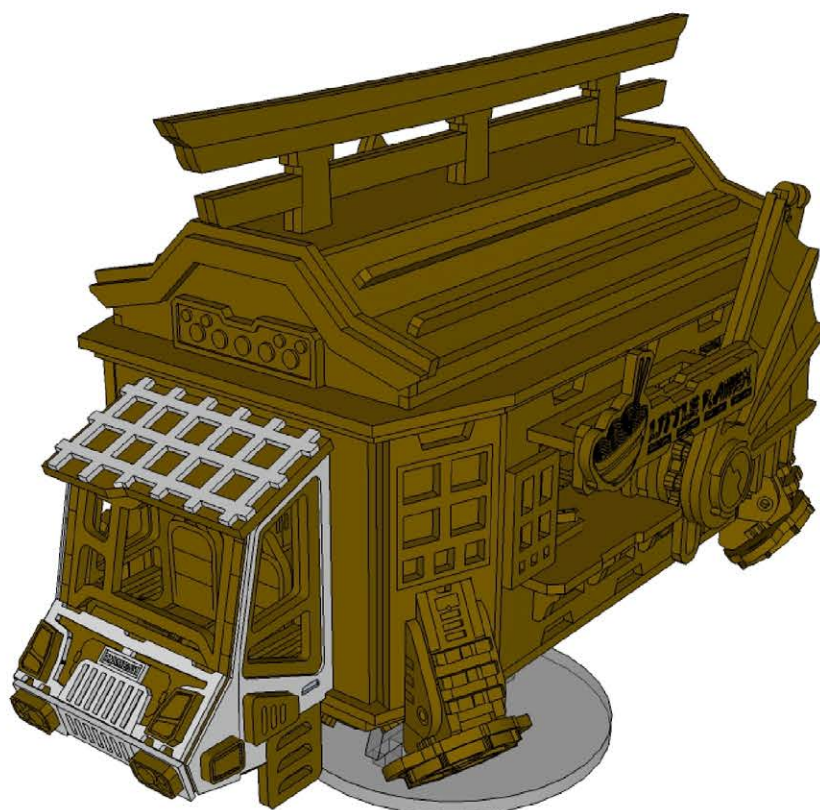
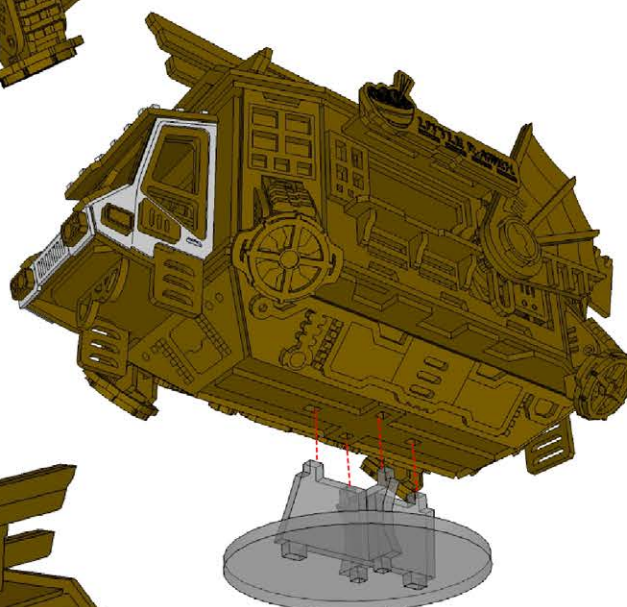
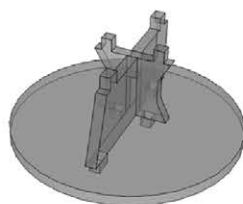
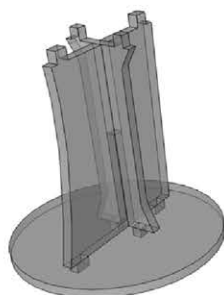
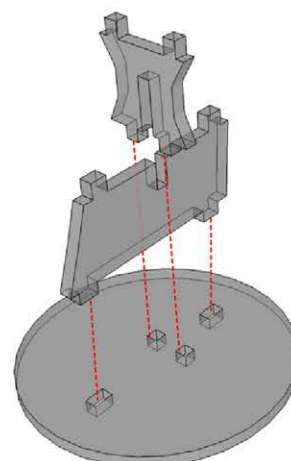
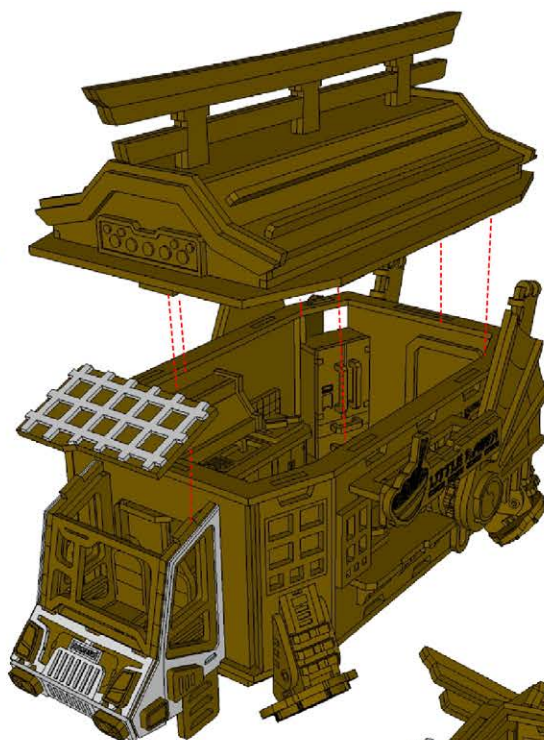




LITTLE RAMEN VFD-80 INSTRUCTIONS



The kit comes with the "idling height" 1 inch flight stand. Alternate height compatible flight stand are available separately from the webstore



Don't throw out your packaging! It contains some little flag decals that can be trimmed out and glued on to the back flag pieces after painting. Use PVA glue to seal the paper after gluing it to your model. A quick hit of matt varnish will then help dull the shiny finish of the PVA

