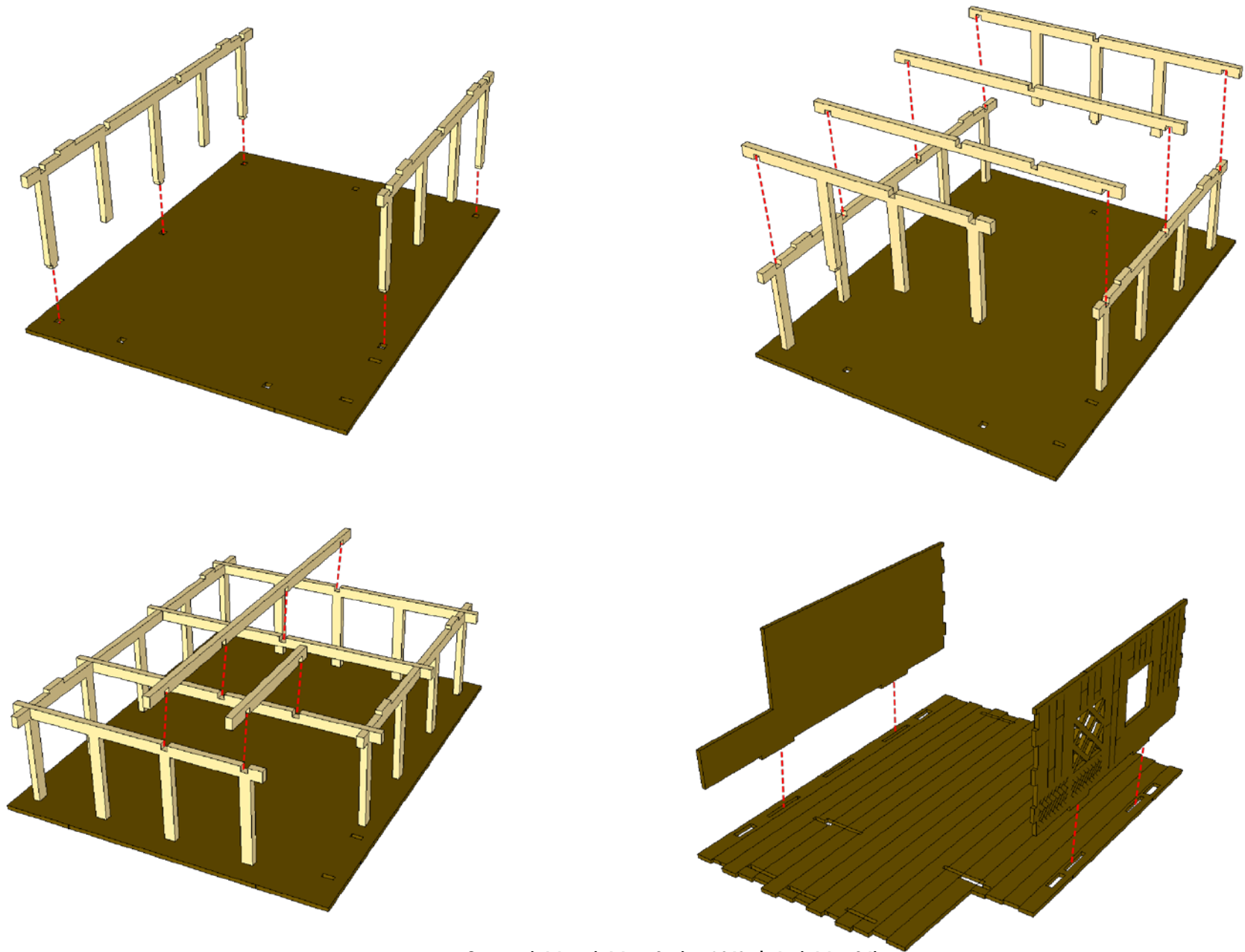
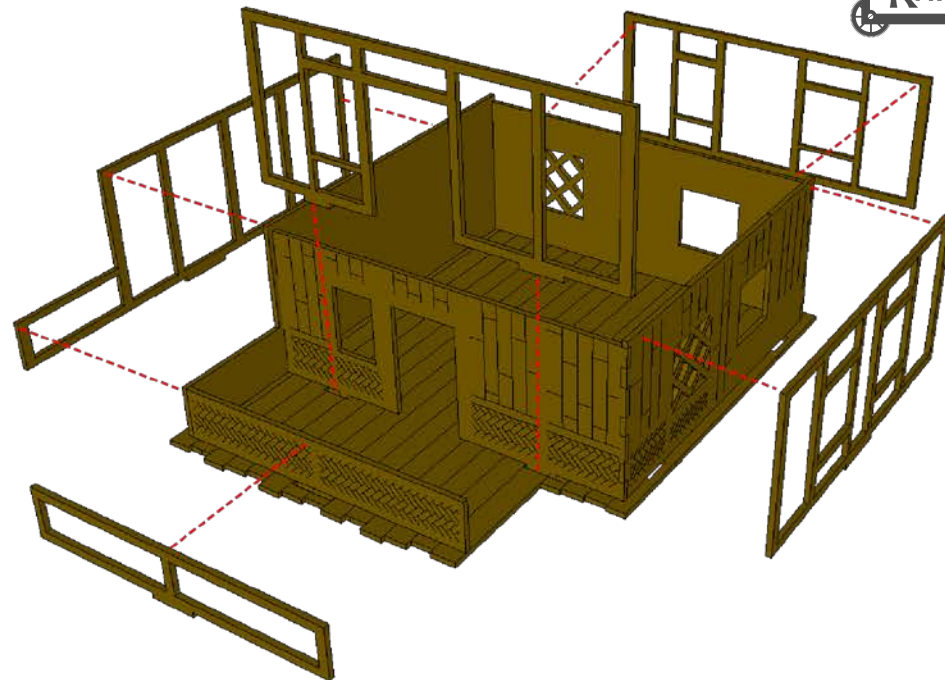
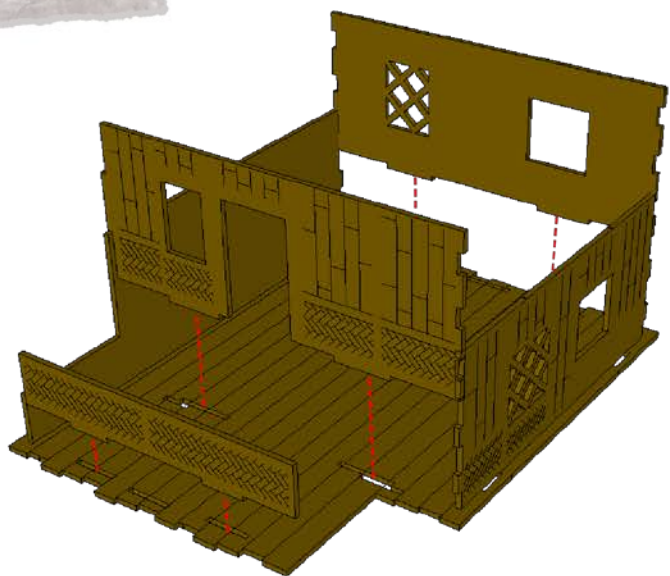


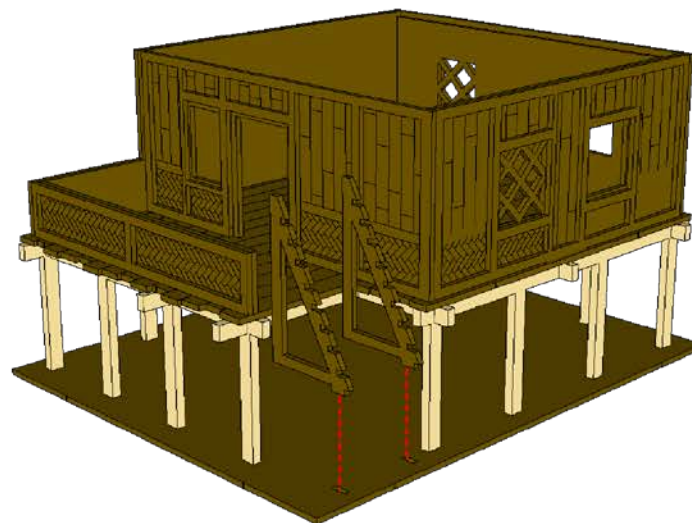
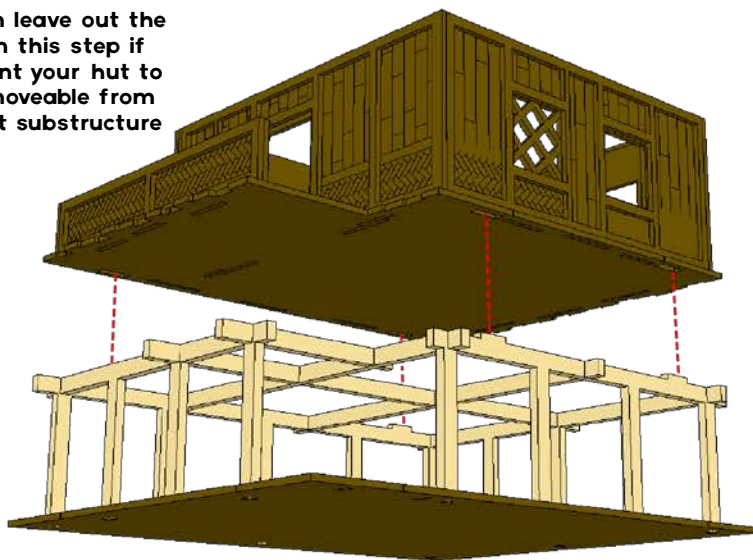
PACIFIC HUT 4 INSTRUCTIONS



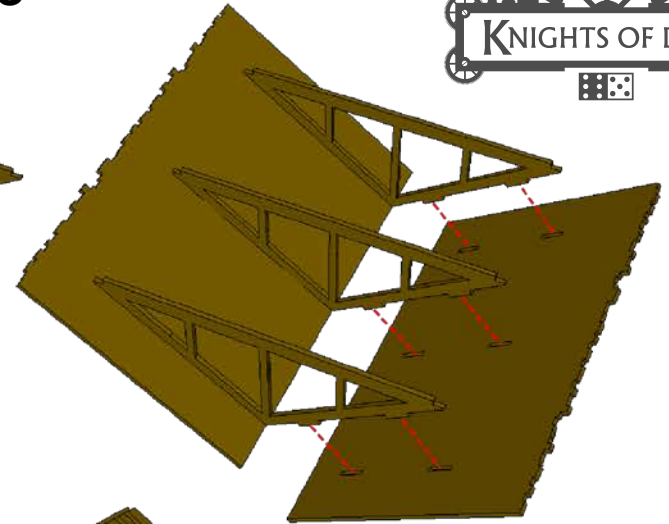
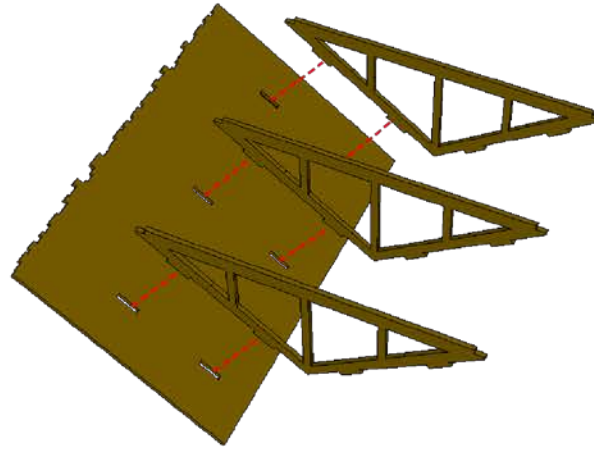
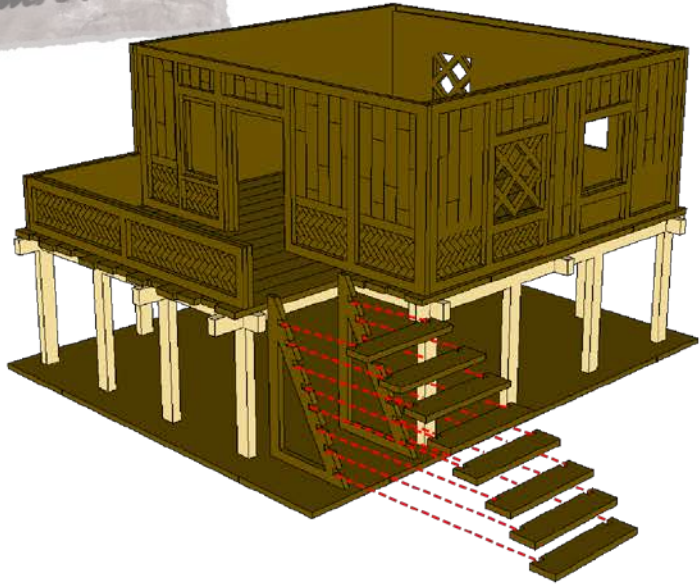
PACIFIC HUT 4 INSTRUCTIONS



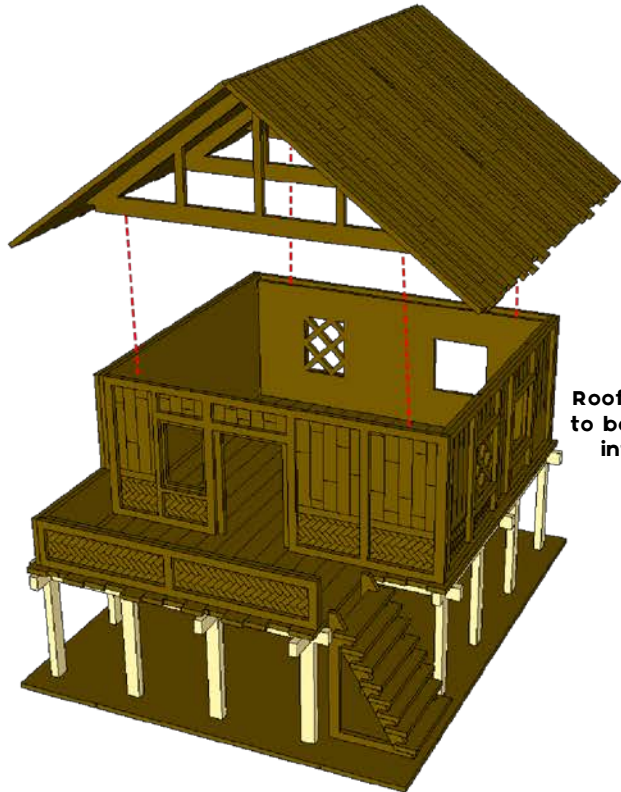
You can leave out the glue in this step if you want your hut to be removable from the stilt substructure



PACIFIC HUT 4 INSTRUCTIONS



Gluing the roof together can be deceptively tricky. Glue one side then set it aside to dry for a while. Gluing the second side will then be much easier



Roofs are designed to be removable for interior access

