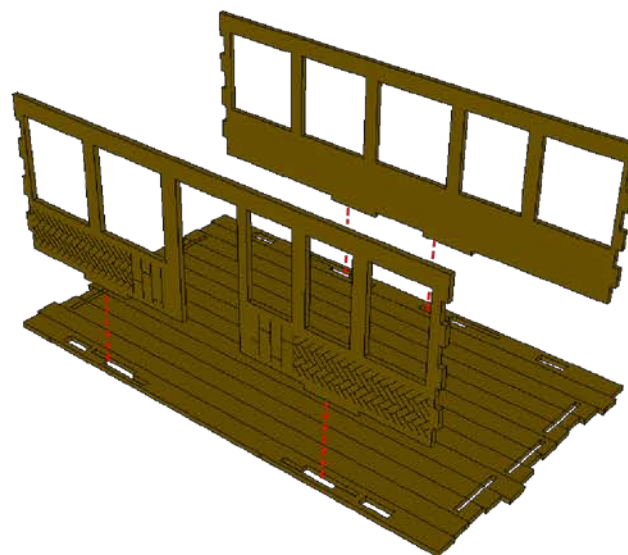
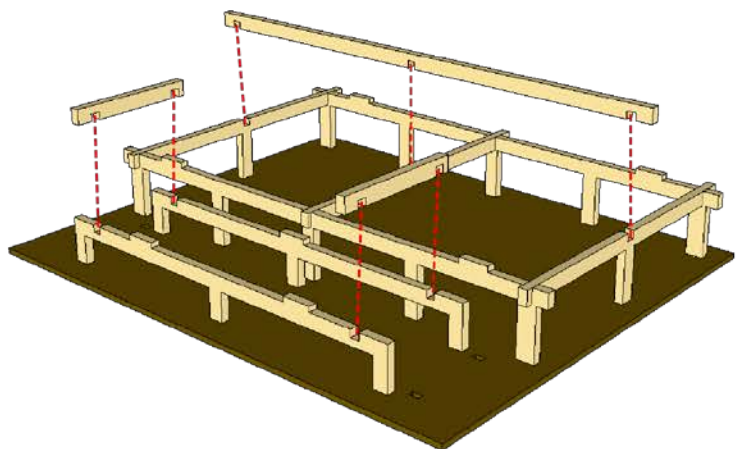
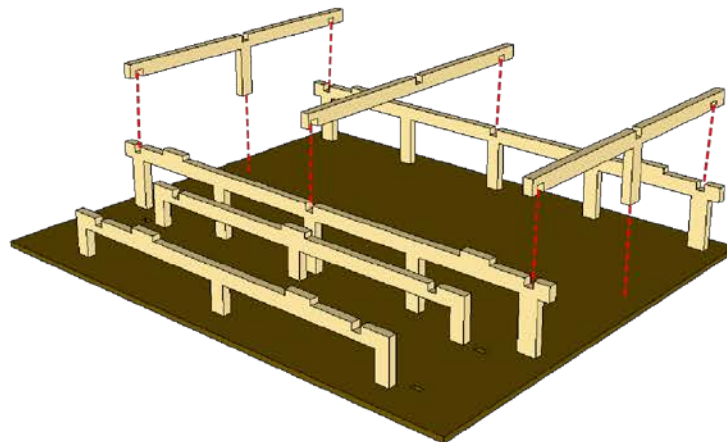
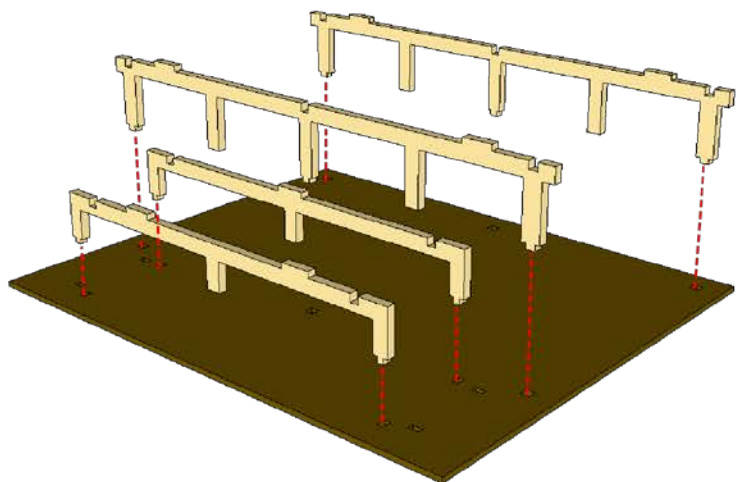
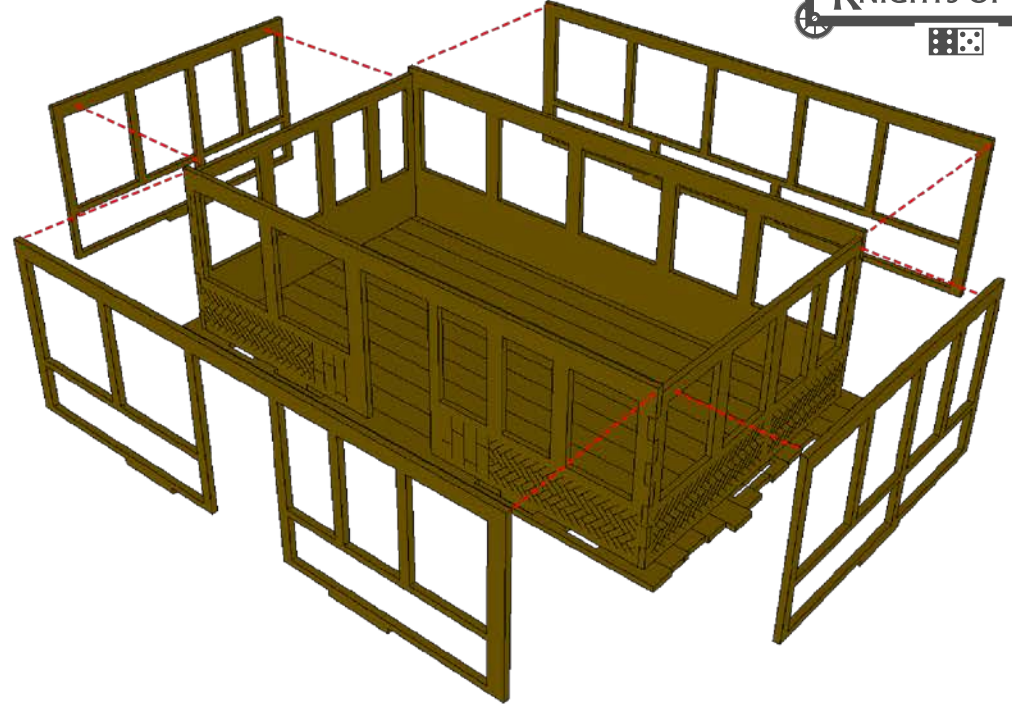
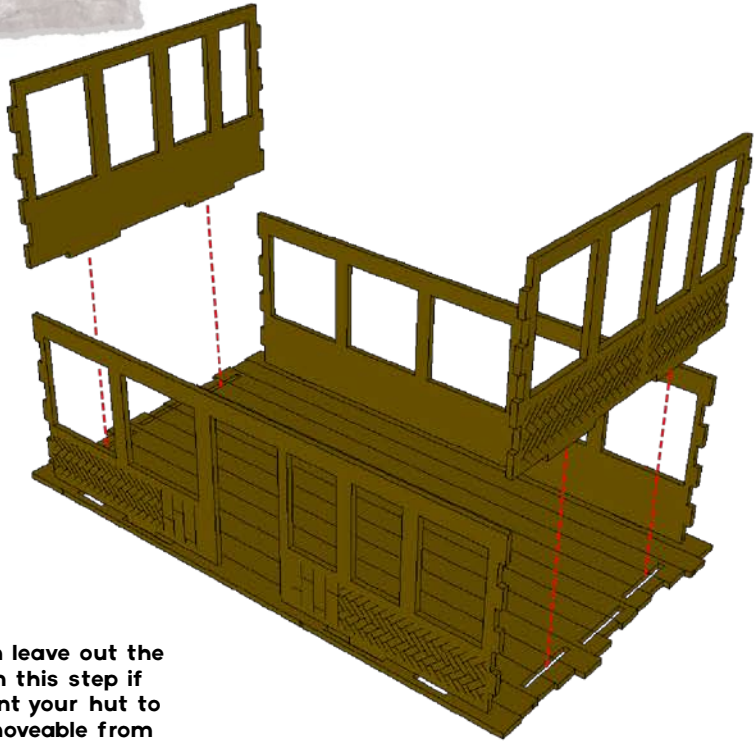


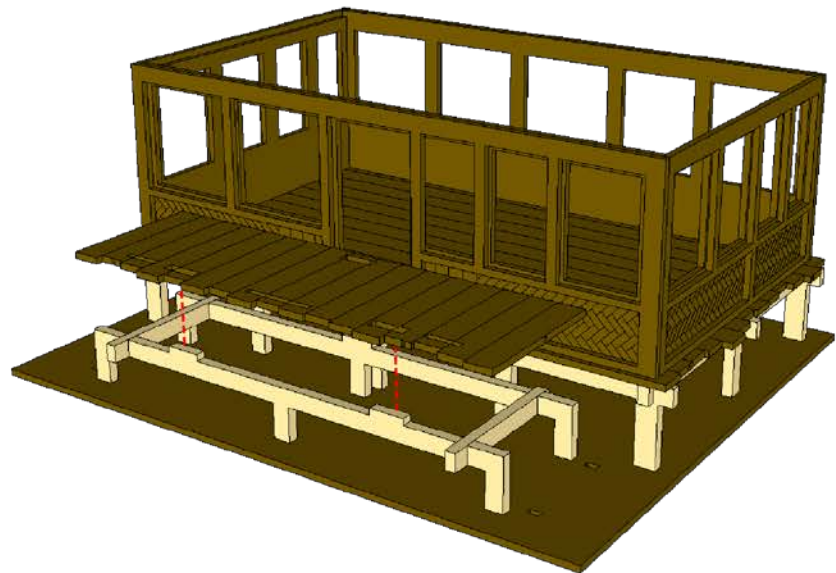
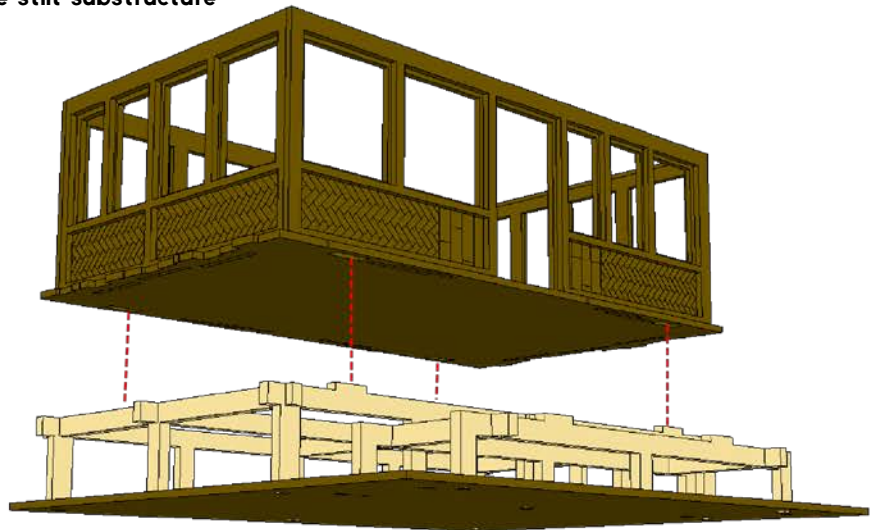
PACIFIC HUT 5 INSTRUCTIONS



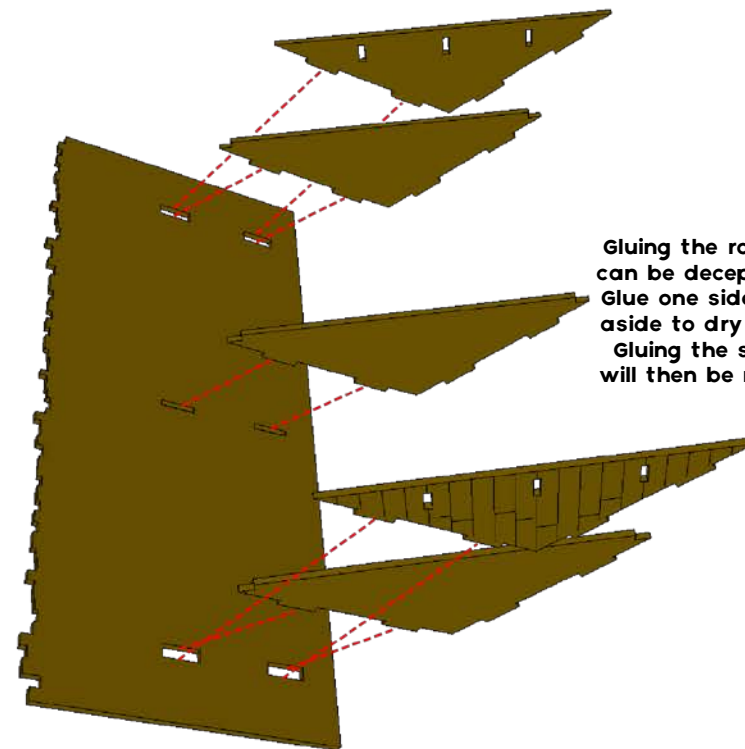
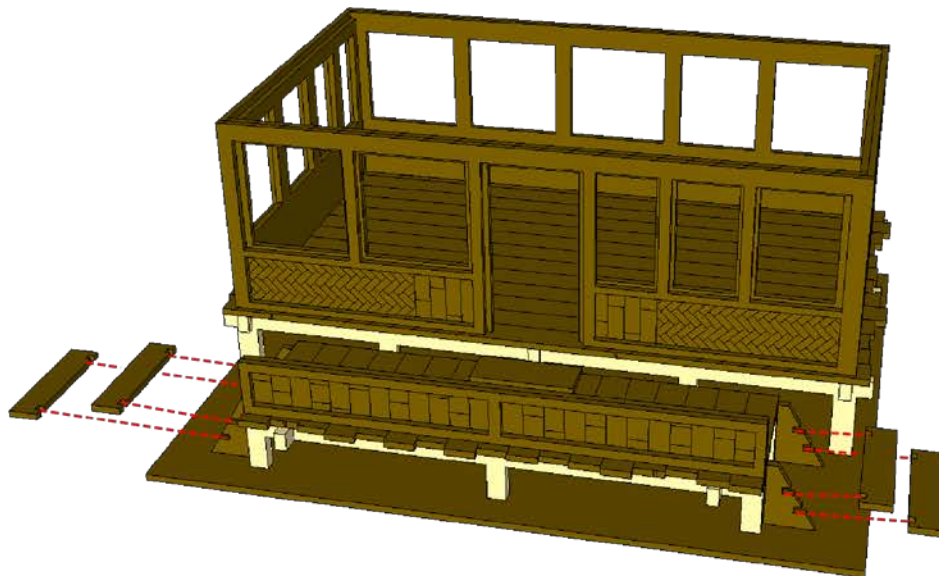
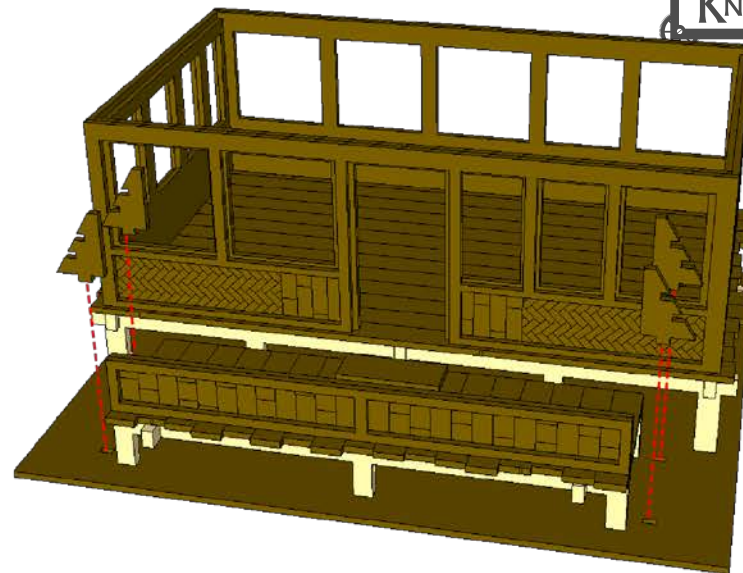
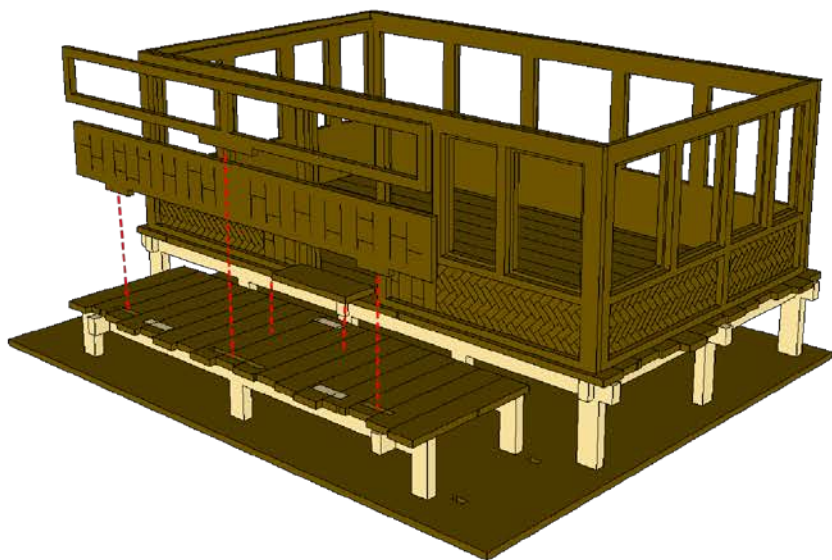
PACIFIC HUT 5 INSTRUCTIONS



You can leave out the glue in this step if you want your hut to be removable from the stilt substructure



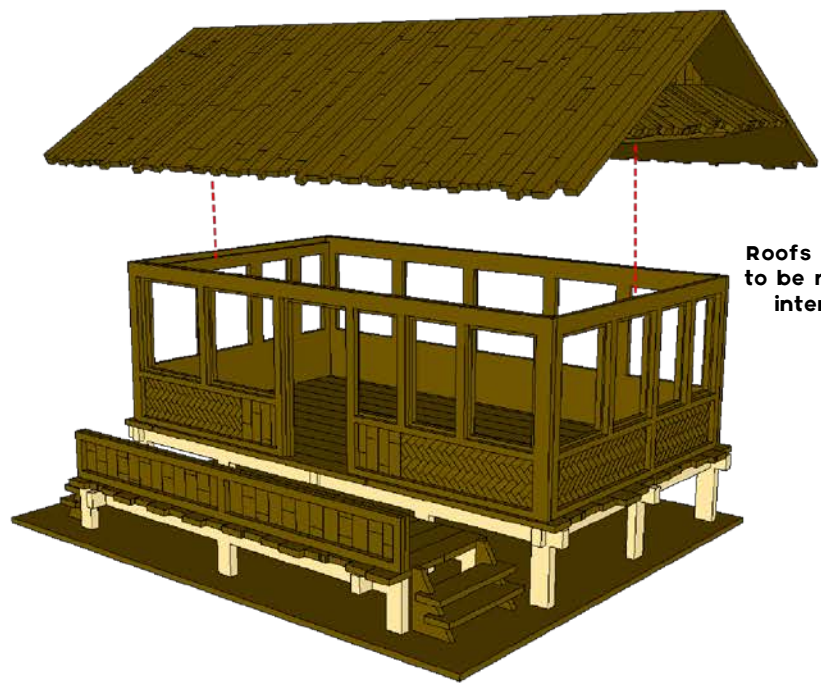
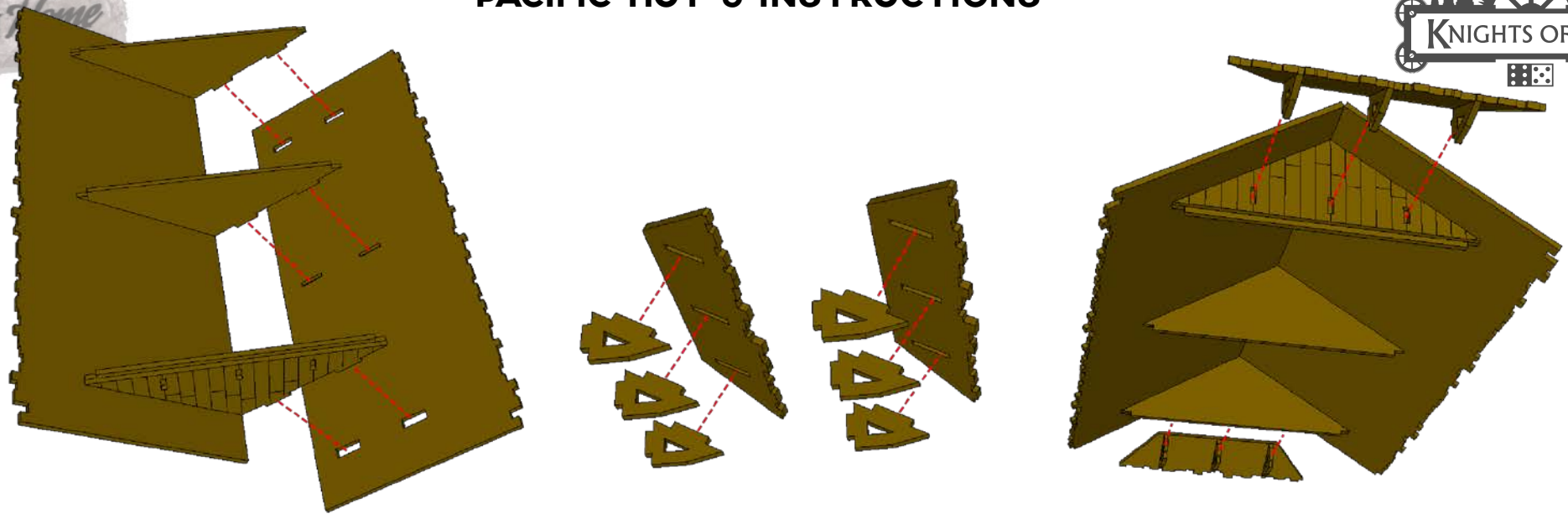
PACIFIC HUT 5 INSTRUCTIONS



Gluing the roof can be deceptively tricky. Glue one side then set it aside to dry for a while. Gluing the second side will then be much easier

Letters Home

PACIFIC HUT 5 INSTRUCTIONS



Roofs are designed to be removable for interior access

