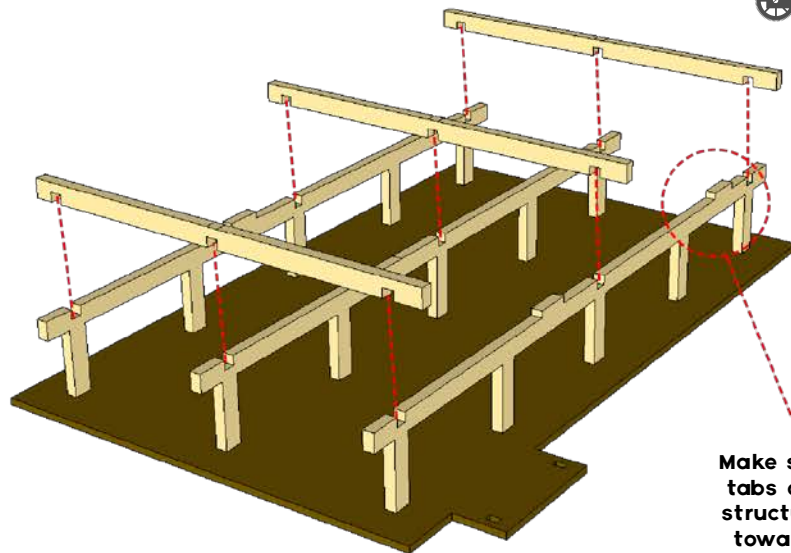
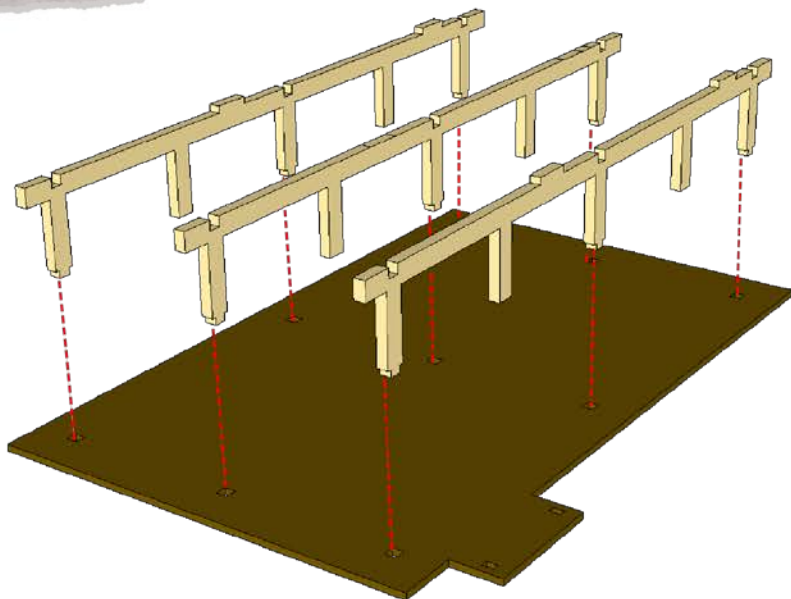
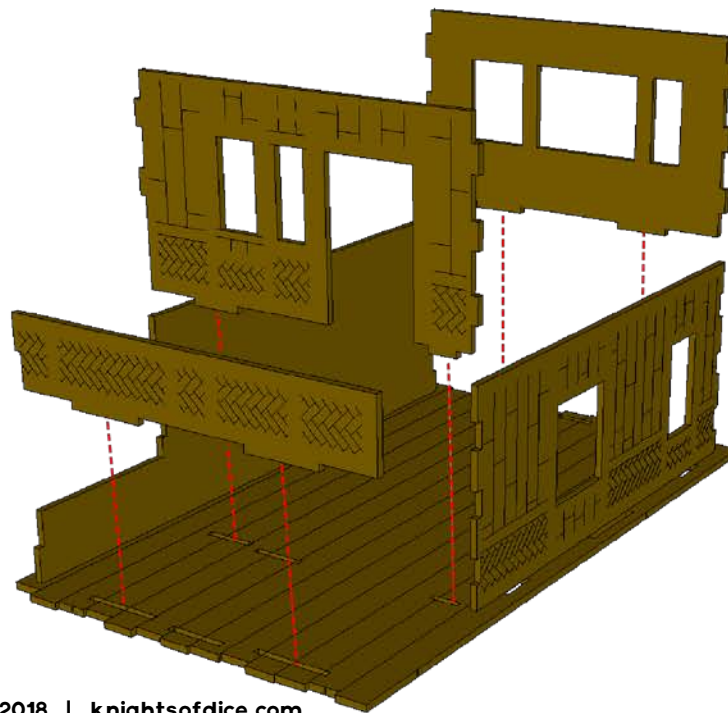
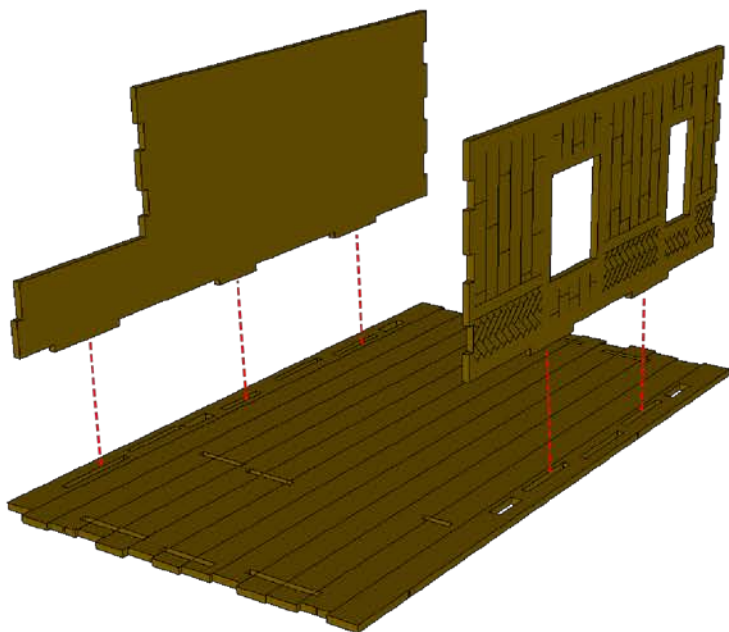


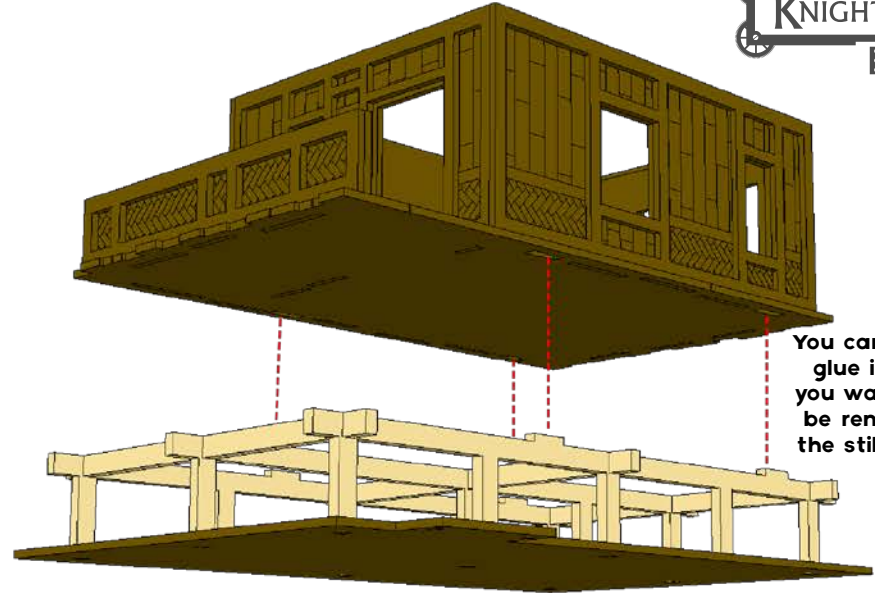
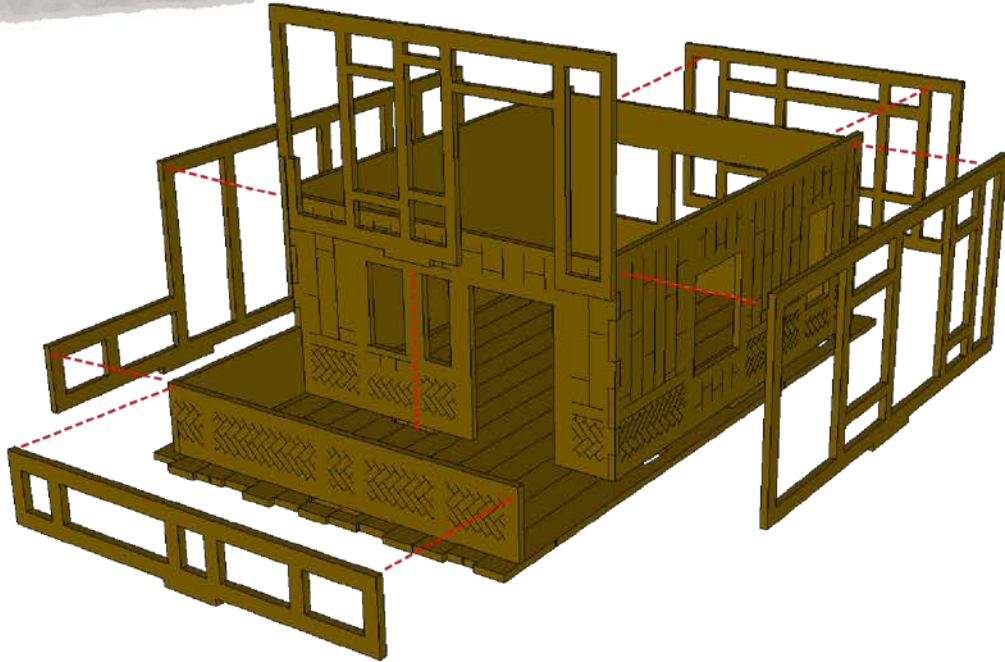
# PACIFIC HUT 6 INSTRUCTIONS



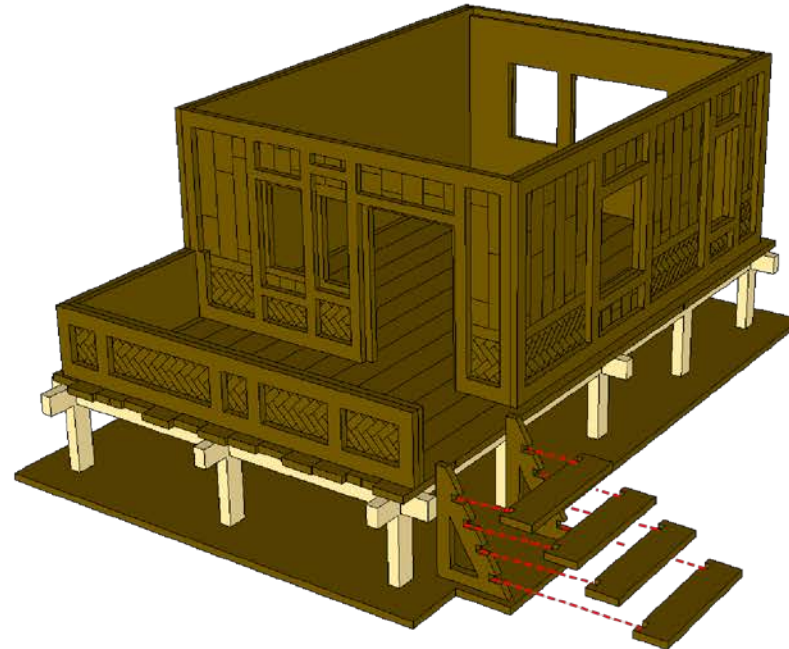
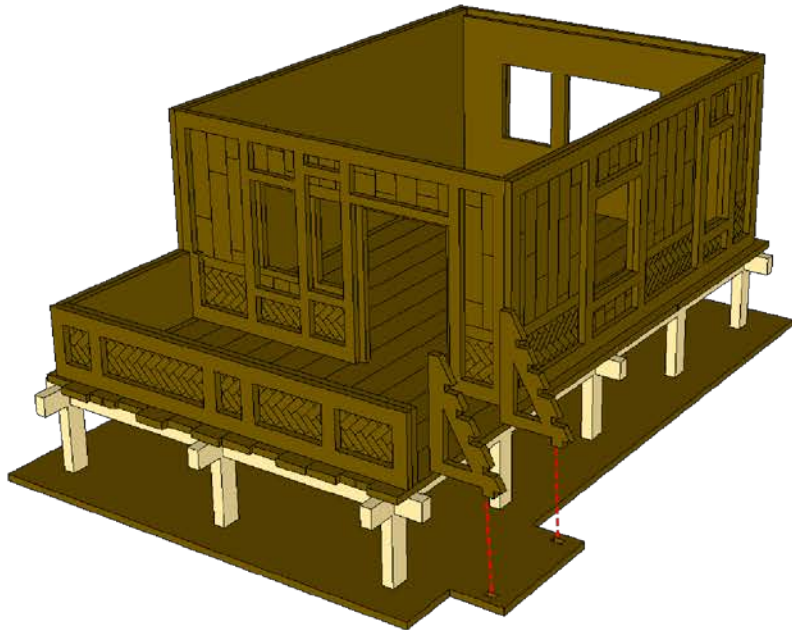
Make sure the locating tabs on the stilt sub structure are situated toward the **BACK** of the base



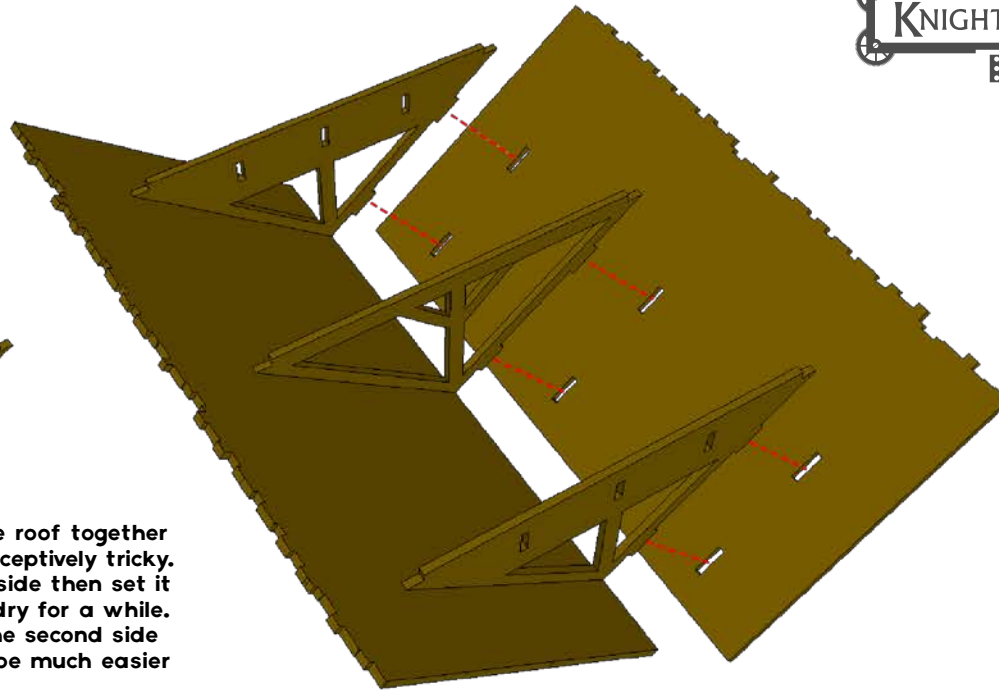
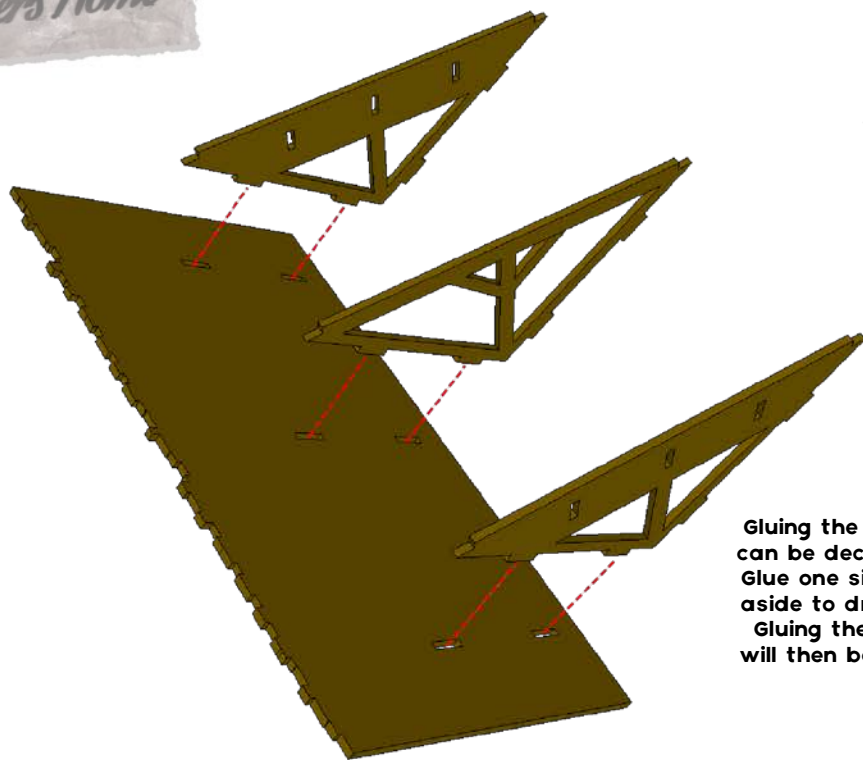
# PACIFIC HUT 6 INSTRUCTIONS



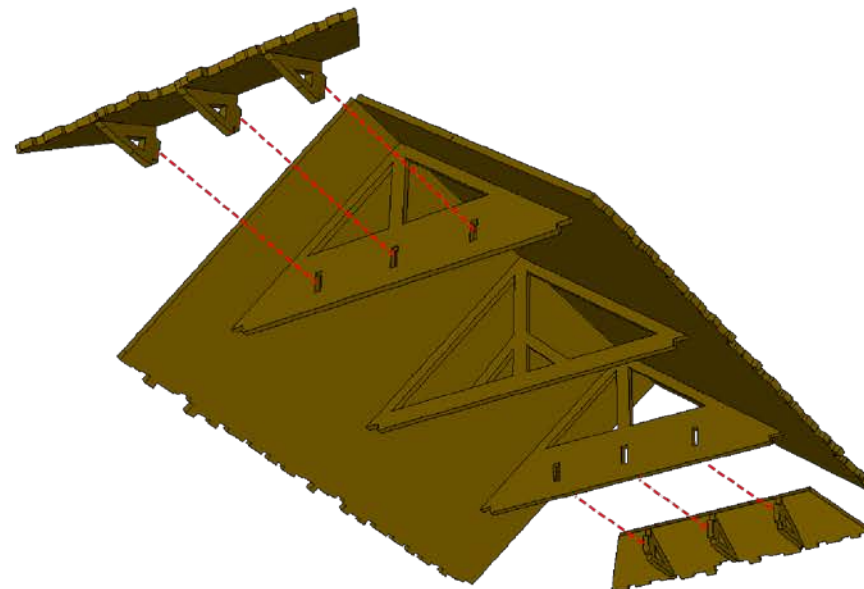
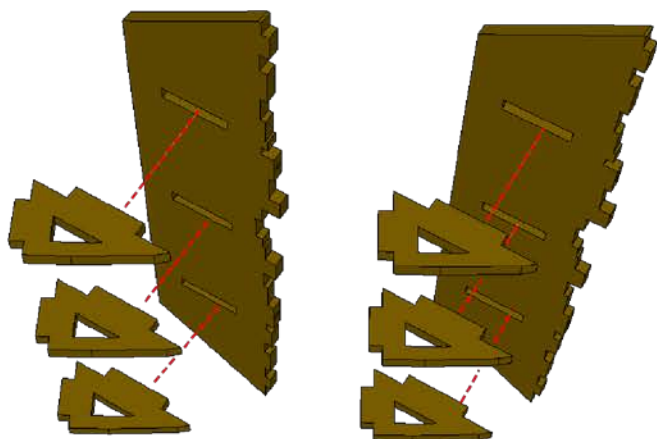
You can leave out the glue in this step if you want your hut to be removable from the still substructure



# PACIFIC HUT 6 INSTRUCTIONS



Gluing the roof together can be deceptively tricky. Glue one side then set it aside to dry for a while. Gluing the second side will then be much easier





# PACIFIC HUT 6 INSTRUCTIONS

Roofs are designed to be removable for interior access

