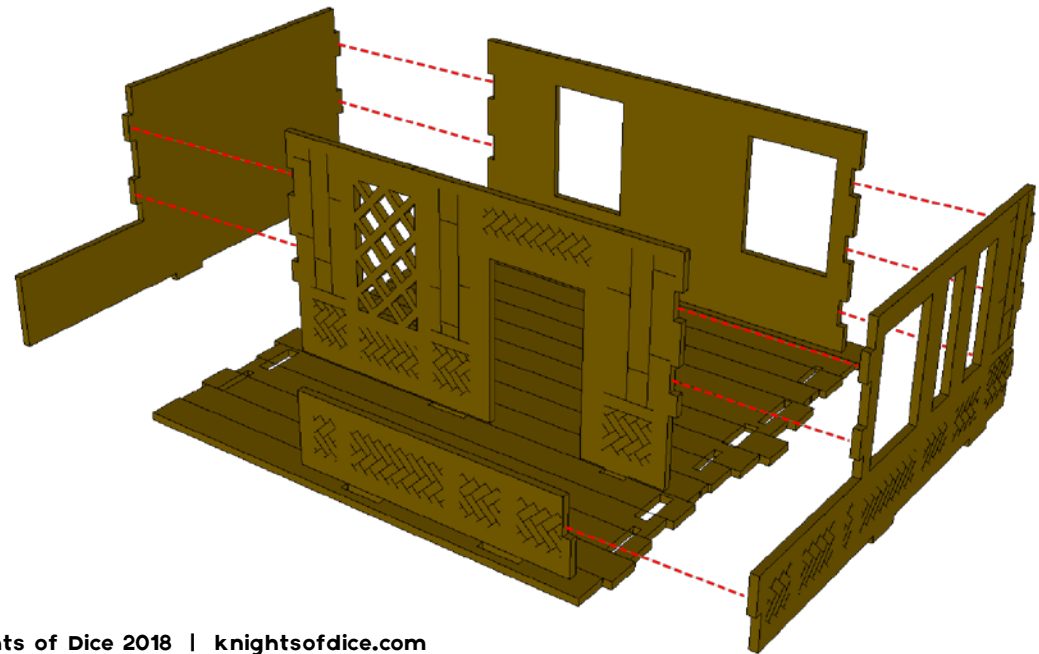
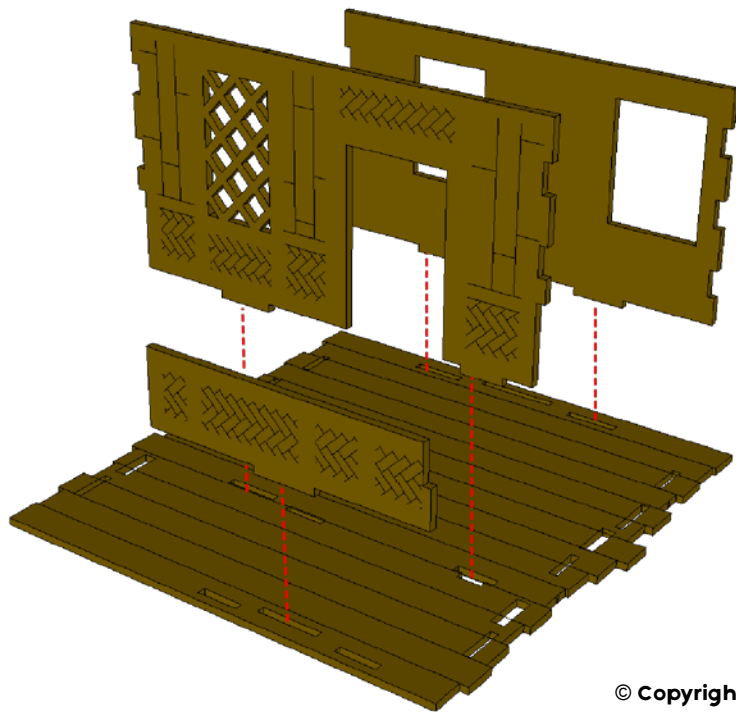
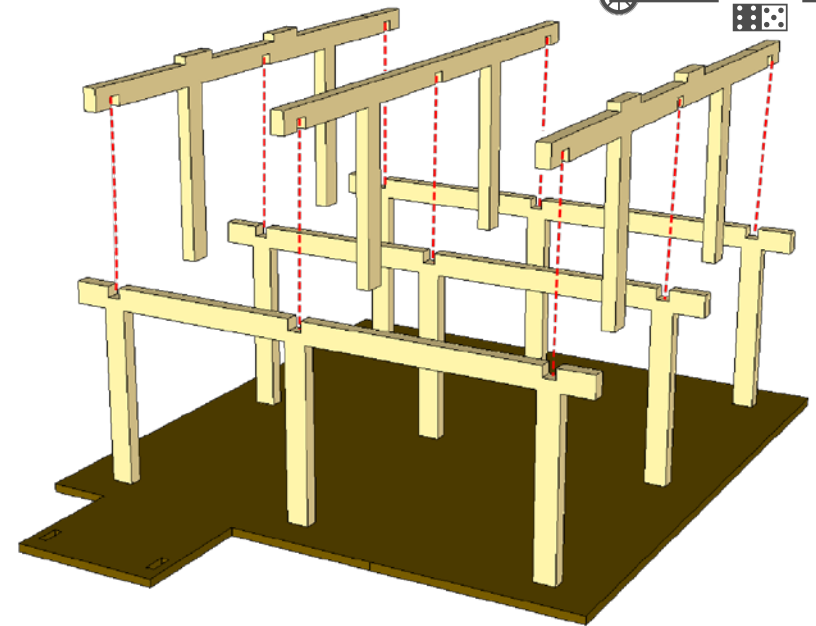
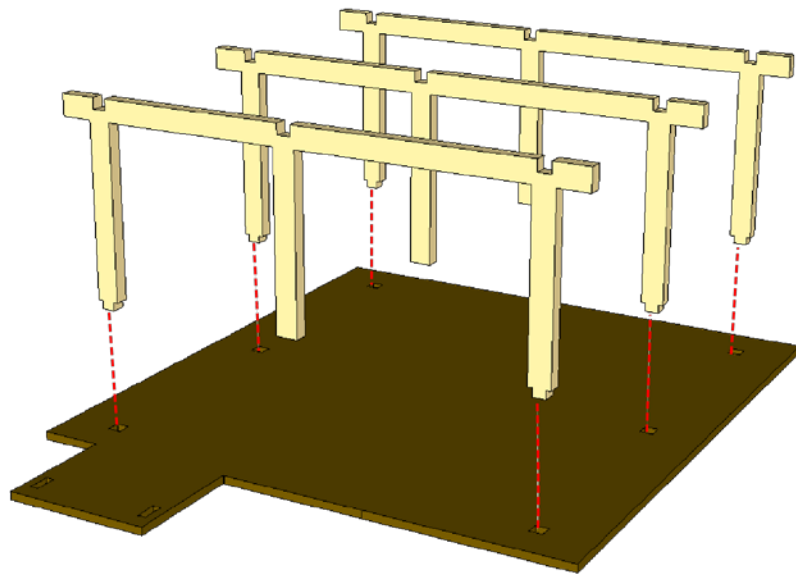
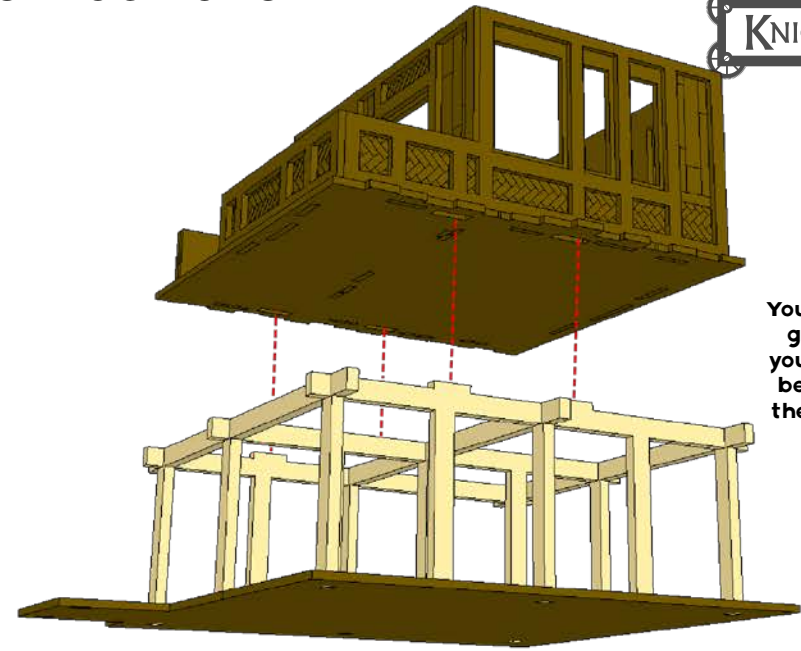
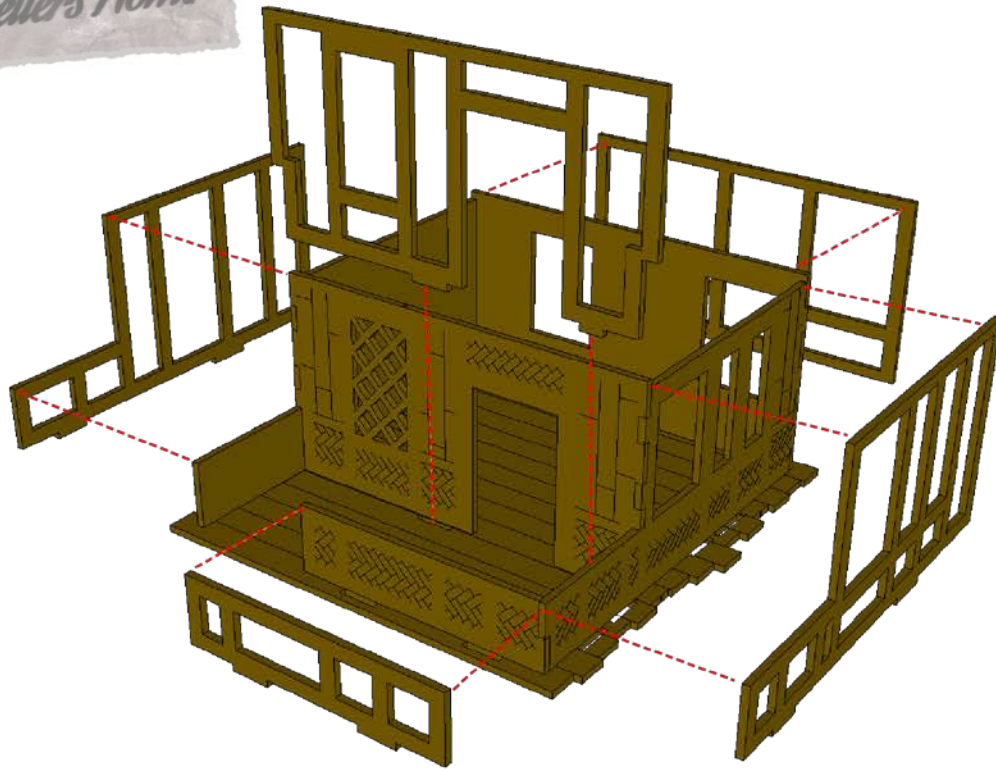


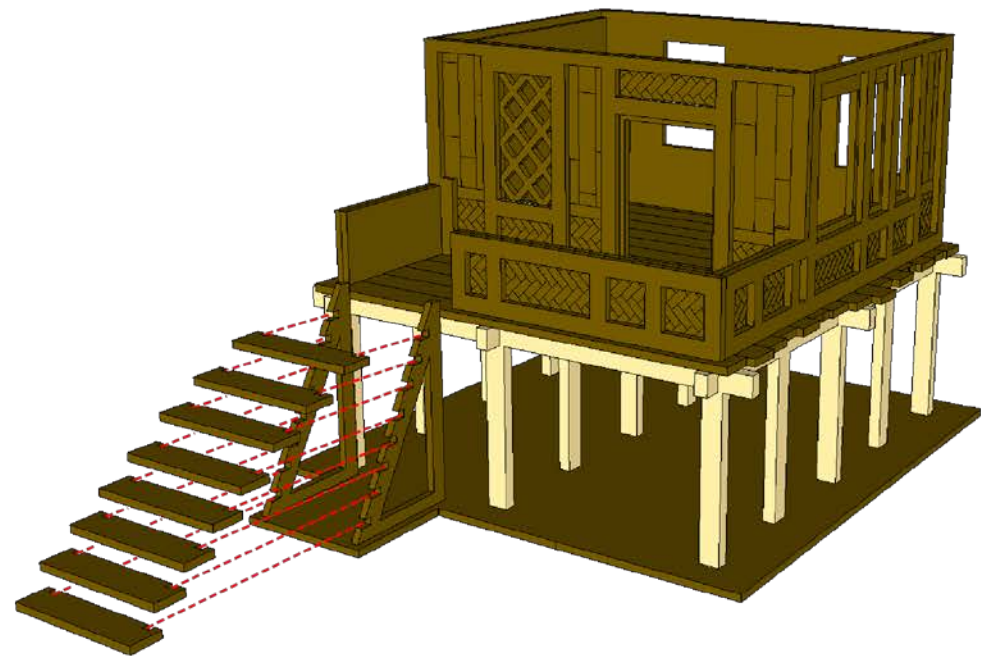
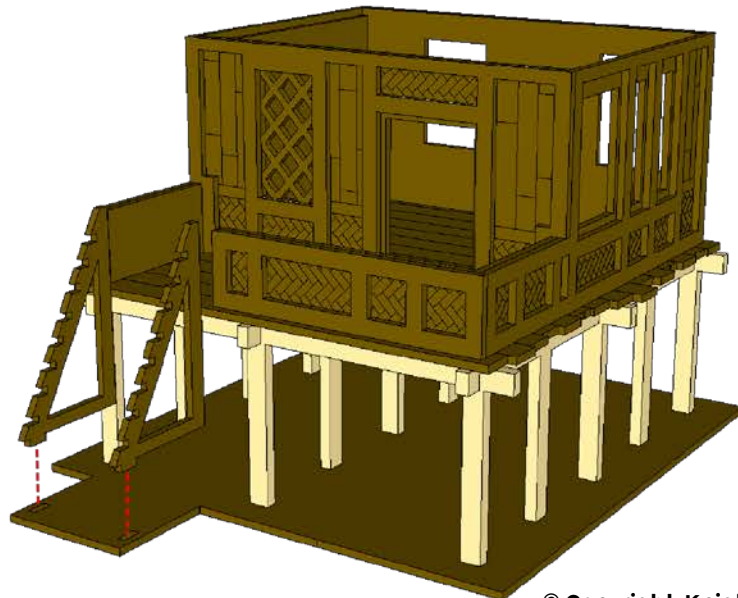
PACIFIC HUT 8 INSTRUCTIONS



PACIFIC HUT 8 INSTRUCTIONS

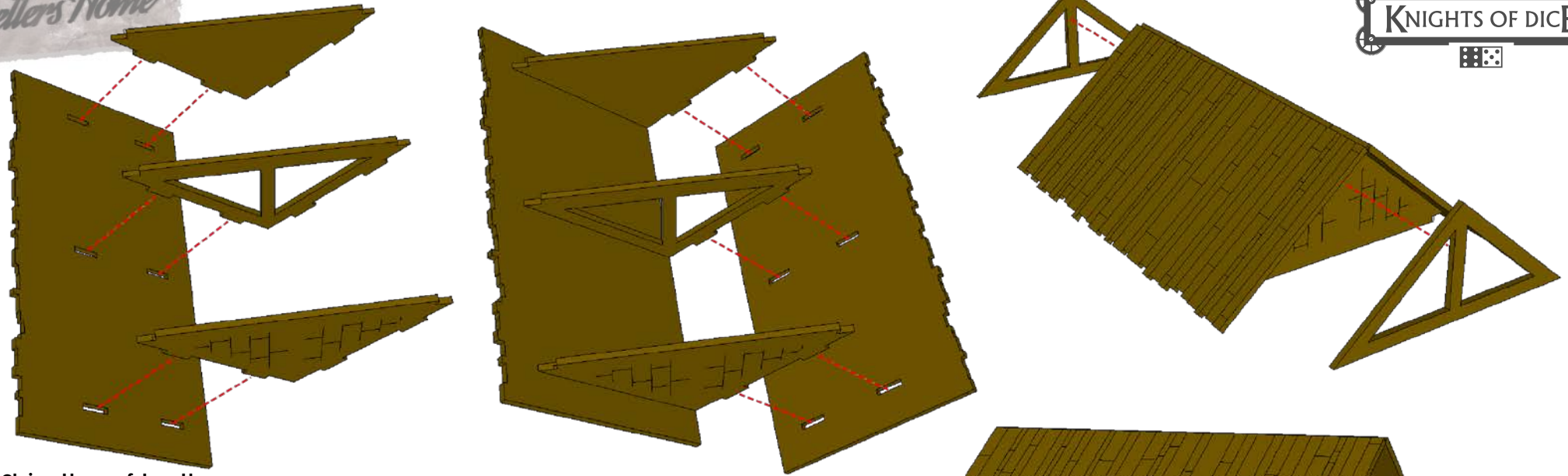


You can leave out the glue in this step if you want your hut to be removable from the still substructure

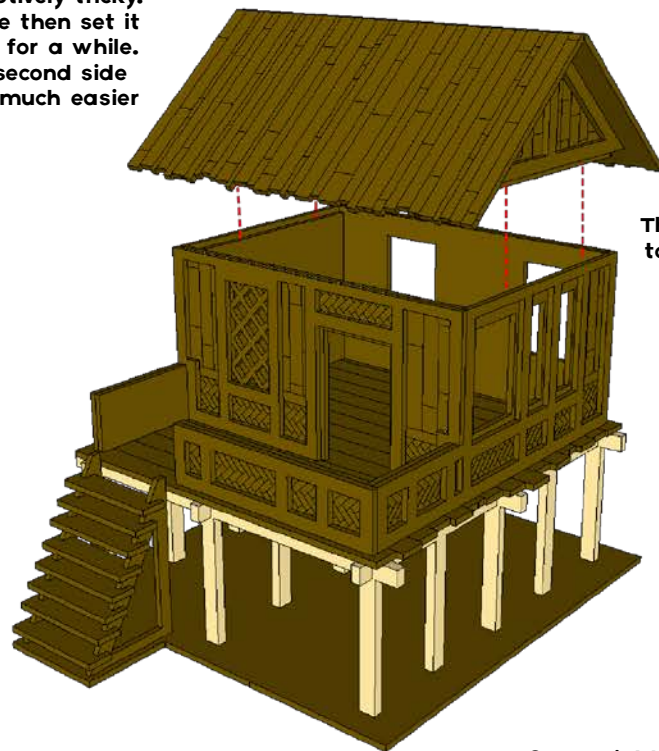


Letters Home

PACIFIC HUT 8 INSTRUCTIONS



Gluing the roof together can be deceptively tricky. Glue one side then set it aside to dry for a while. Gluing the second side will then be much easier



The roof is designed to be removable for interior access

