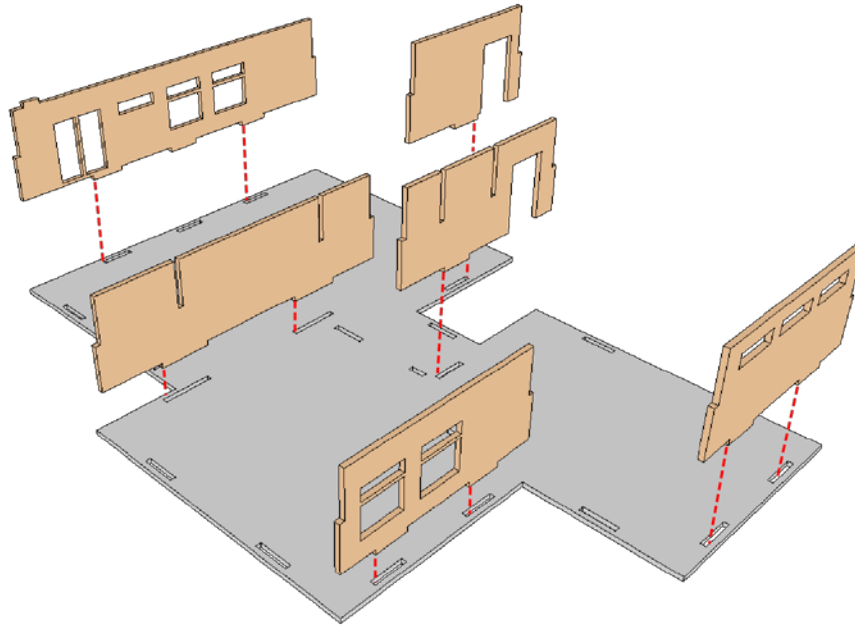


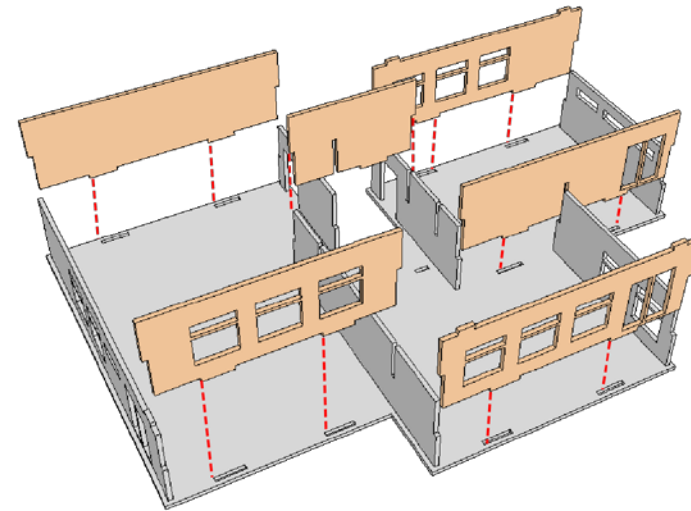
TRAB002 PARKVIEW LODGE



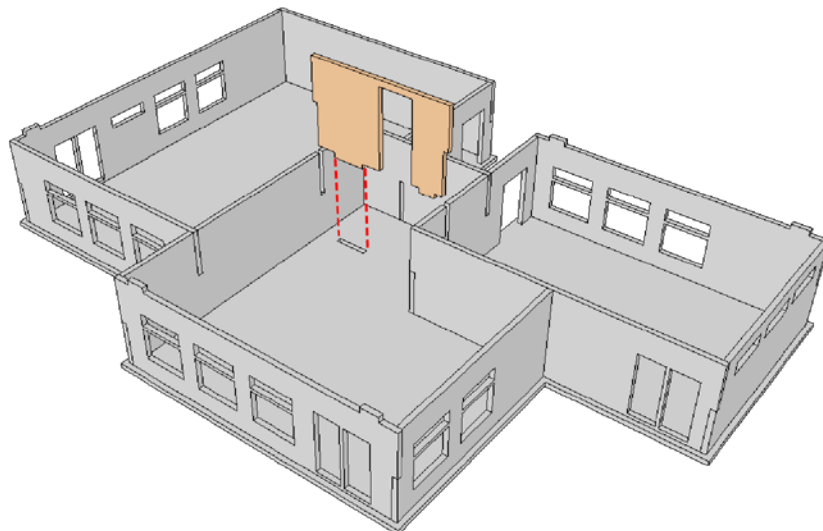
STEP 1



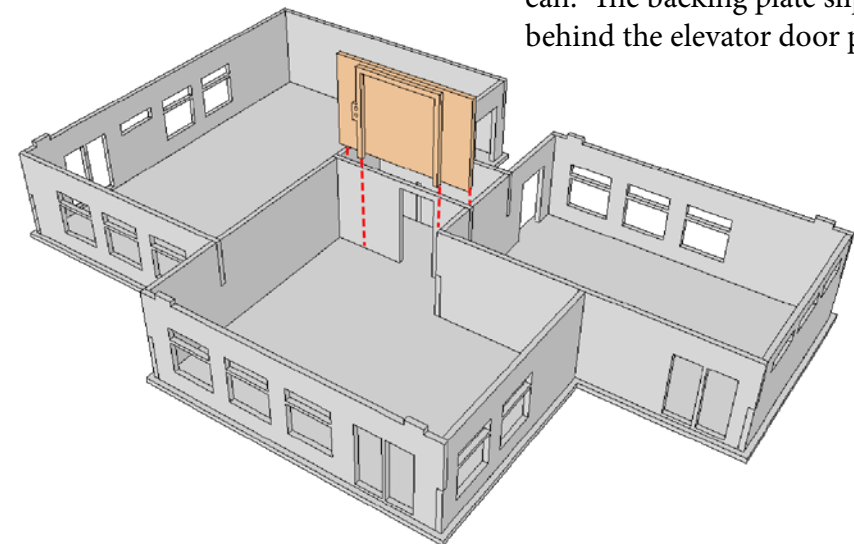
STEP 2



STEP 3



STEP 4

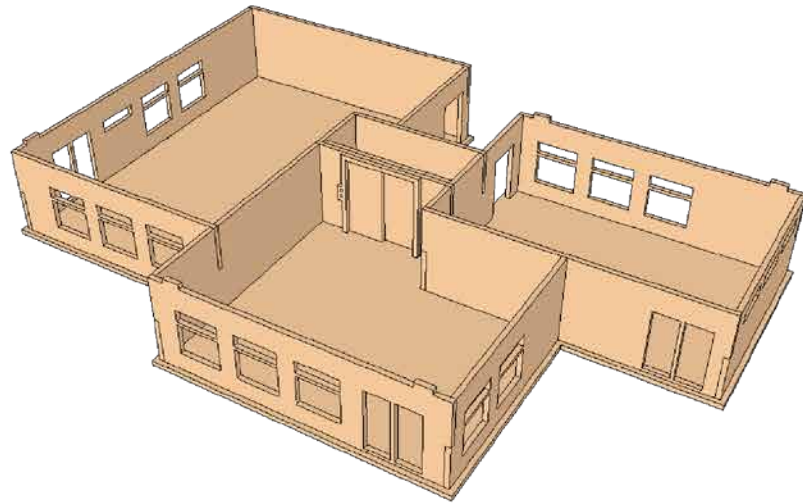


The elevator trim does not plug in, try and align it as best you can. The backing plate slips in behind the elevator door plate

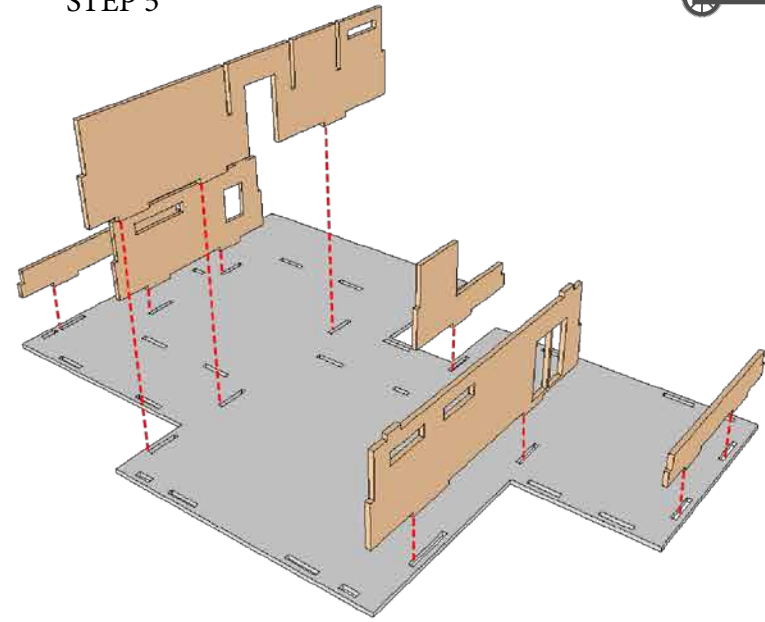
TRAB002 PARKVIEW LODGE



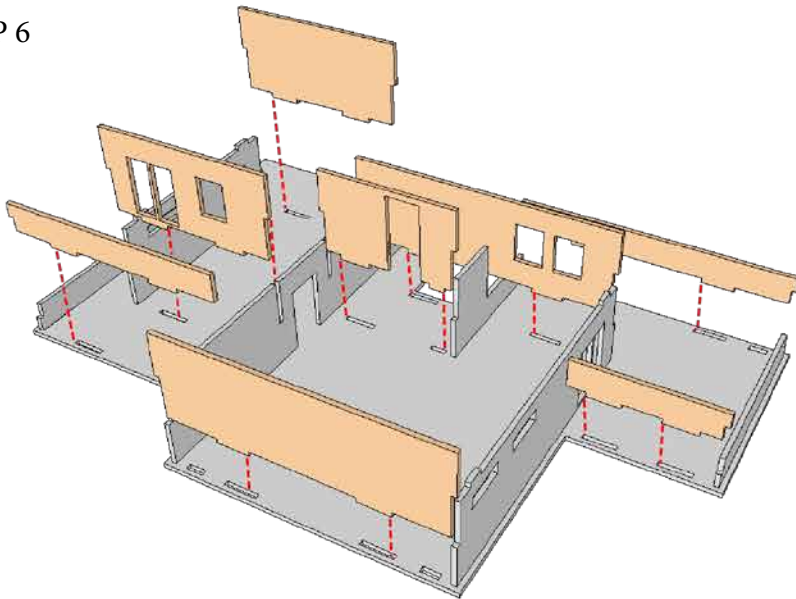
Ground floor complete!



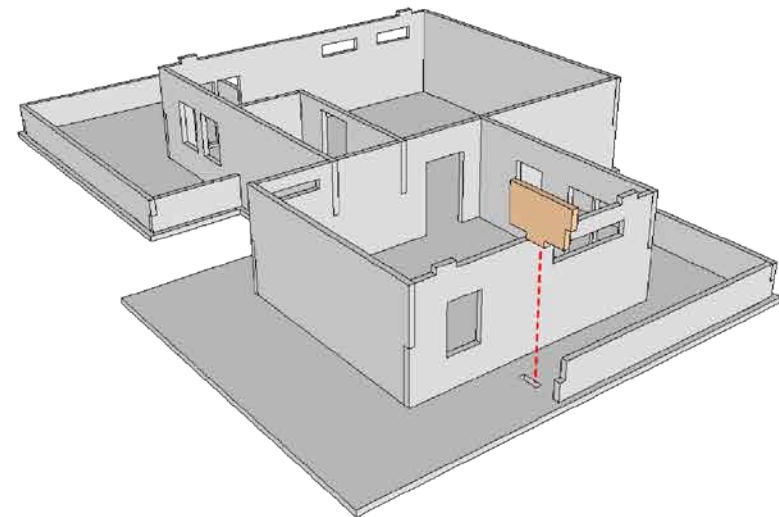
STEP 5



STEP 6



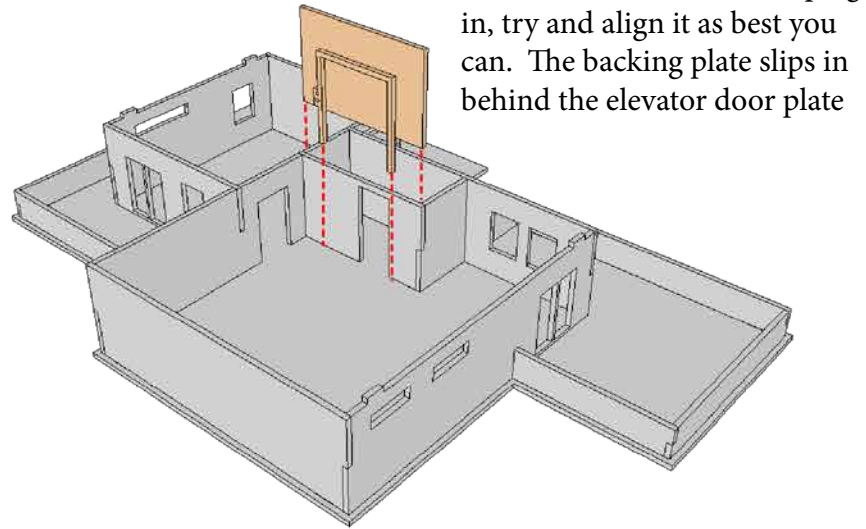
STEP 7



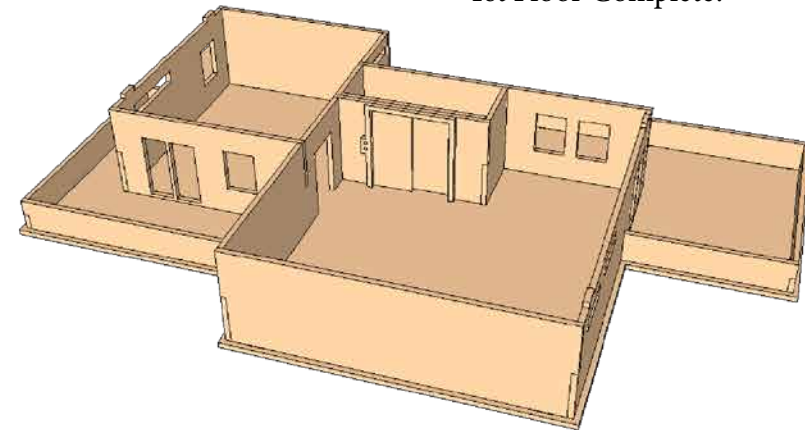
TRAB002 PARKVIEW LODGE



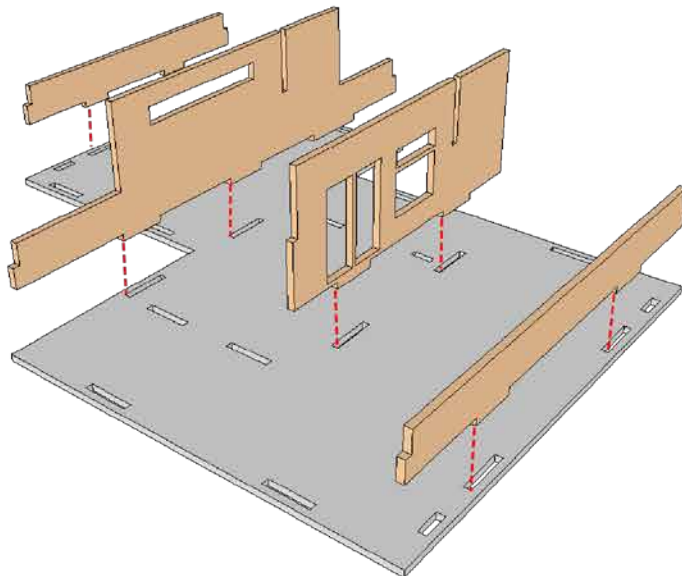
STEP 8



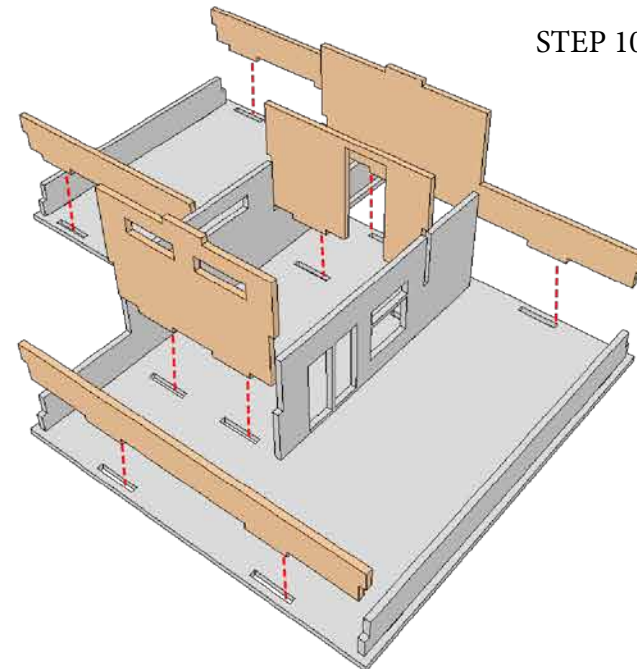
1st Floor Complete!



STEP 9



STEP 10

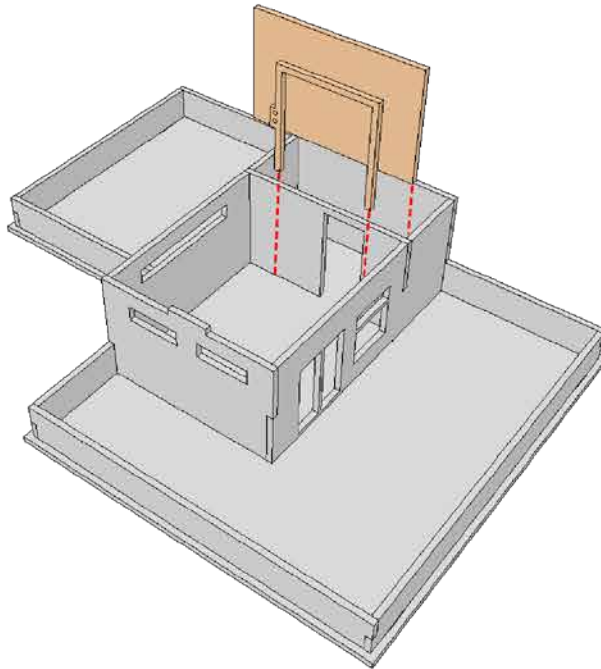


TRAB002 PARKVIEW LODGE

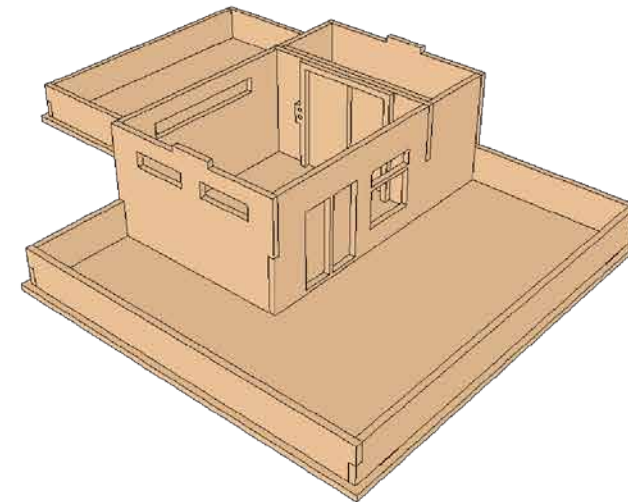


STEP 11

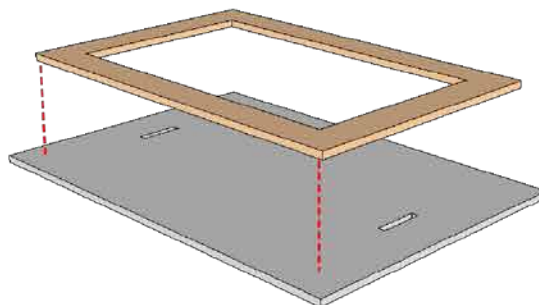
The elevator trim does not plug in, try and align it as best you can. The backing plate slips in behind the elevator door plate and glues to the back of the door plate



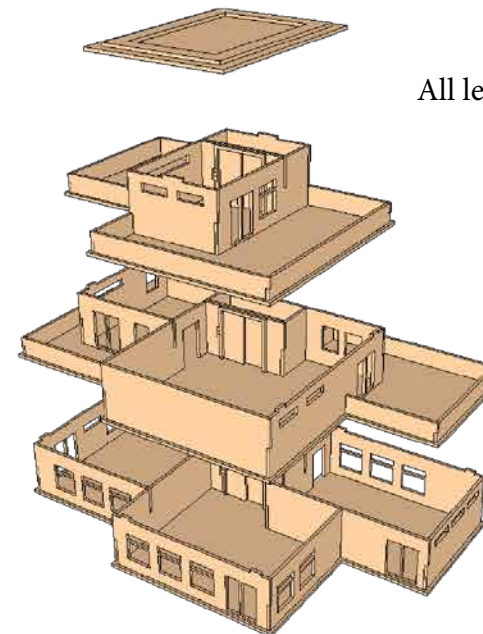
2nd Floor Complete!



STEP 12



All levels stack



TRAB002 PARKVIEW LODGE



CONGRATULATIONS!

MODEL COMPLETE!

