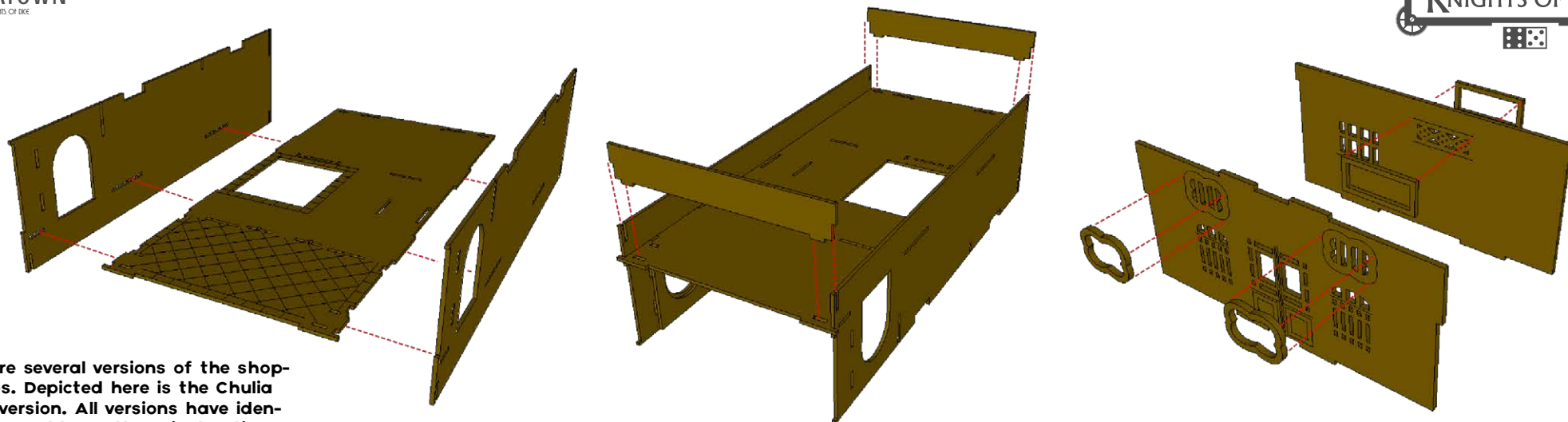
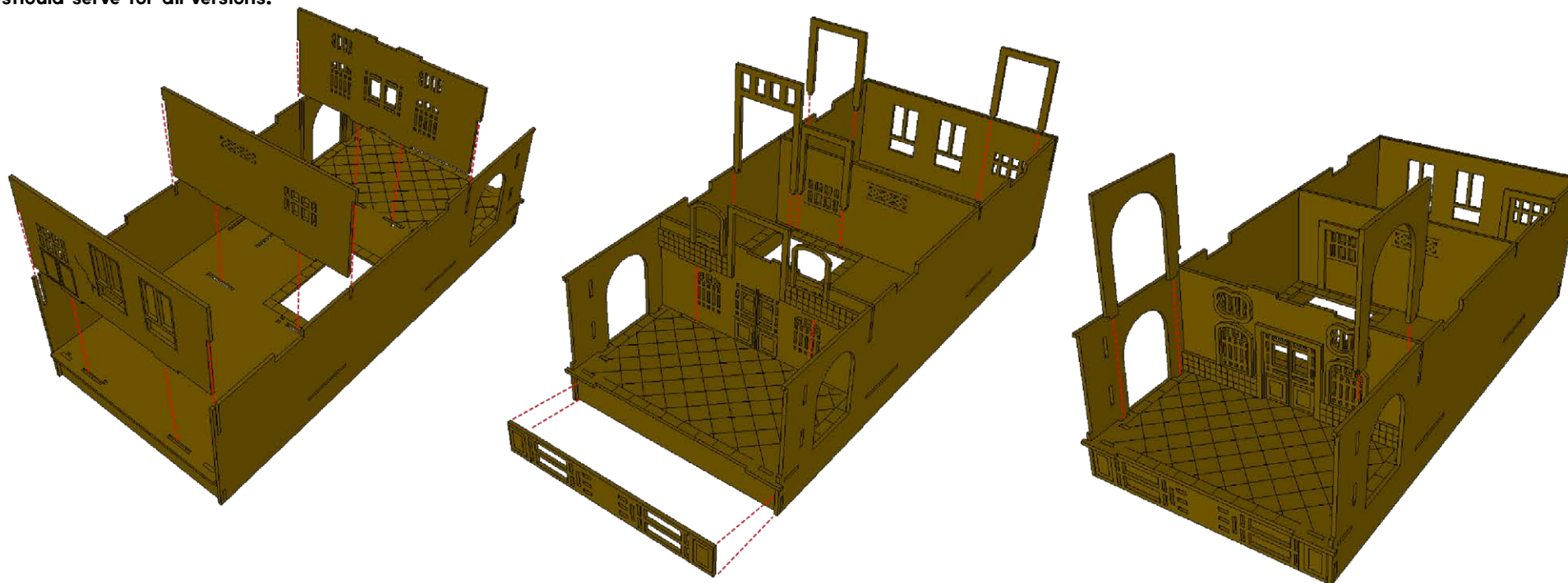


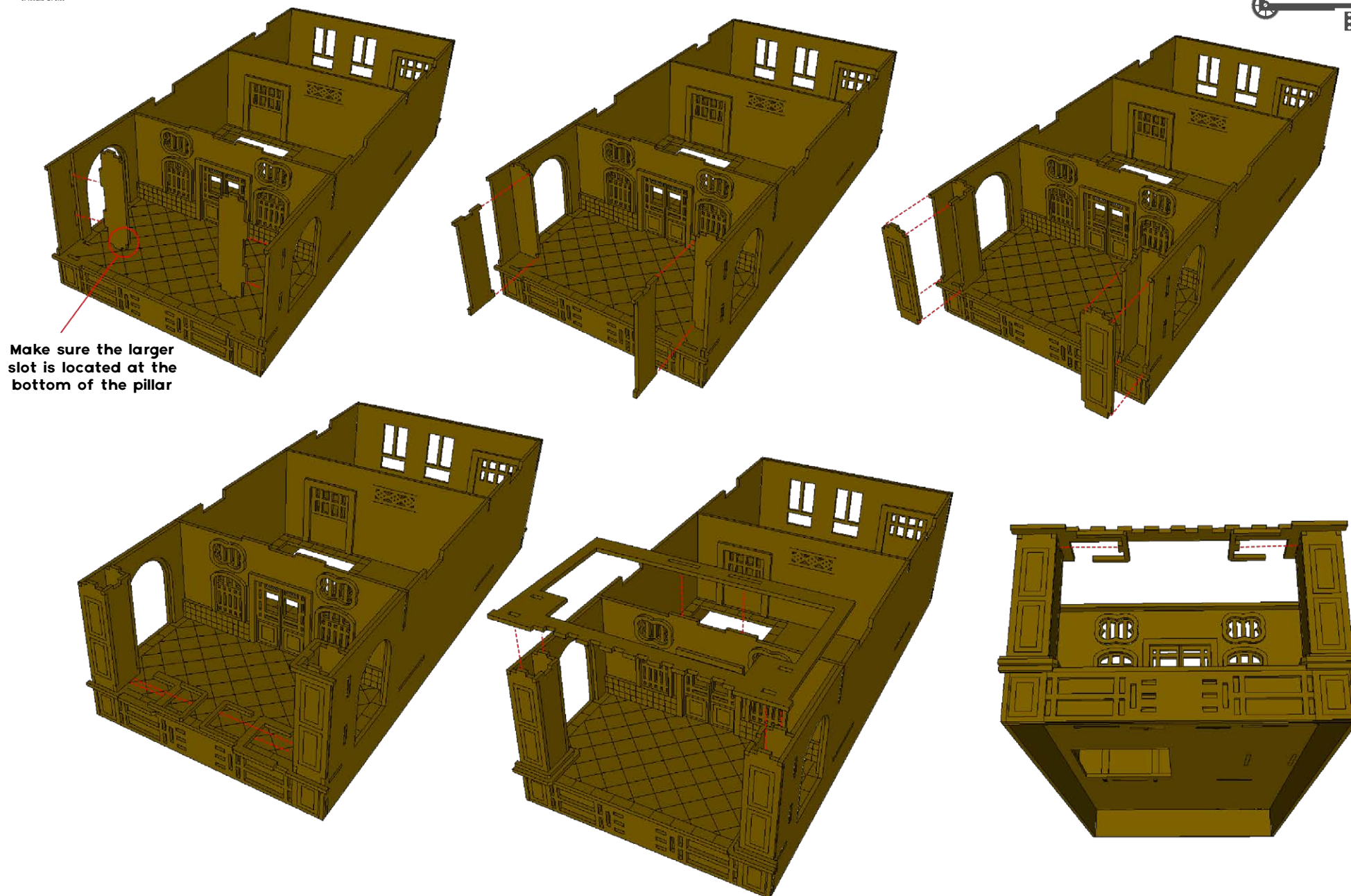
SHOPHOUSES ASSEMBLY INSTRUCTIONS



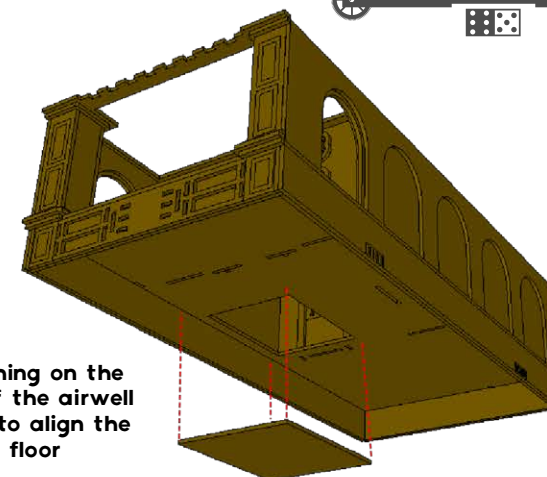
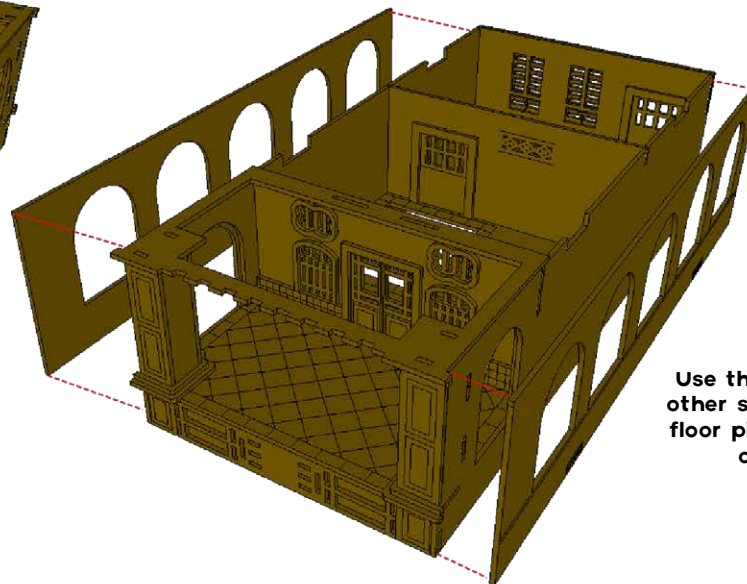
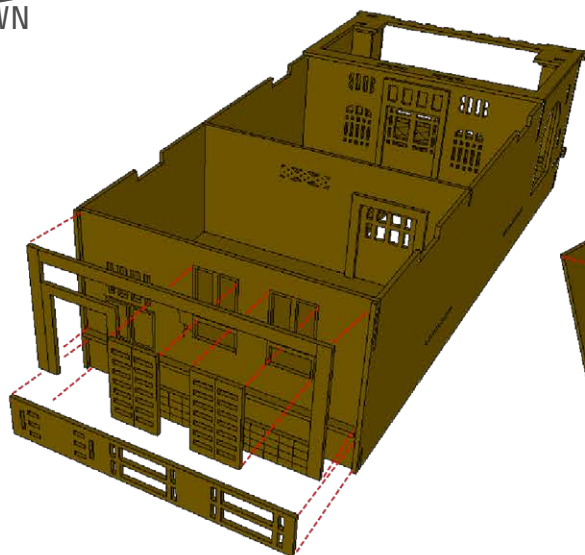
There are several versions of the shop-houses. Depicted here is the Chulia House version. All versions have identical assembly, so these instructions should serve for all versions.



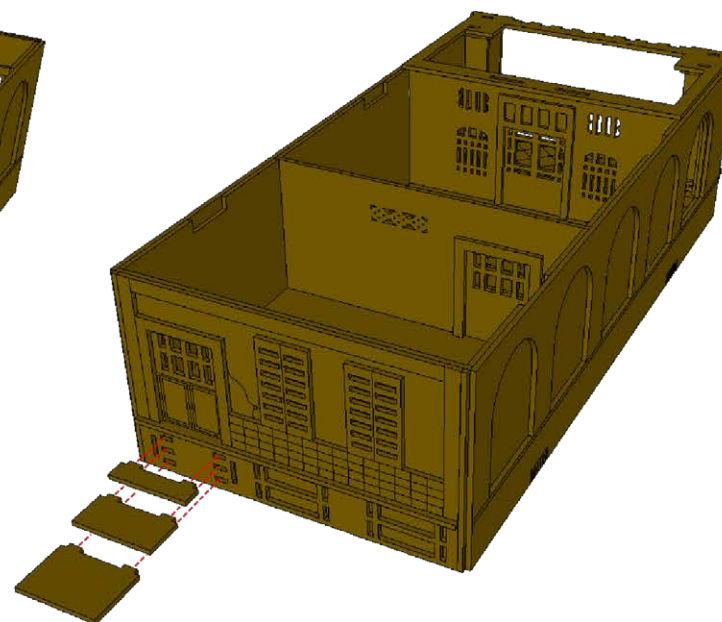
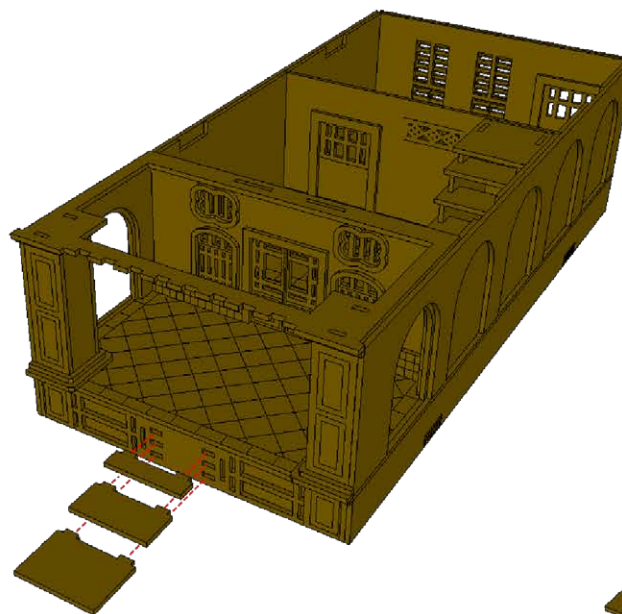
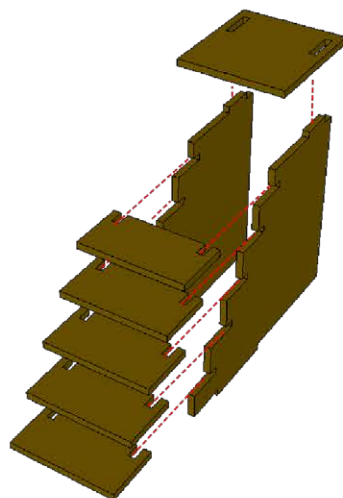
SHOPHOUSES ASSEMBLY INSTRUCTIONS



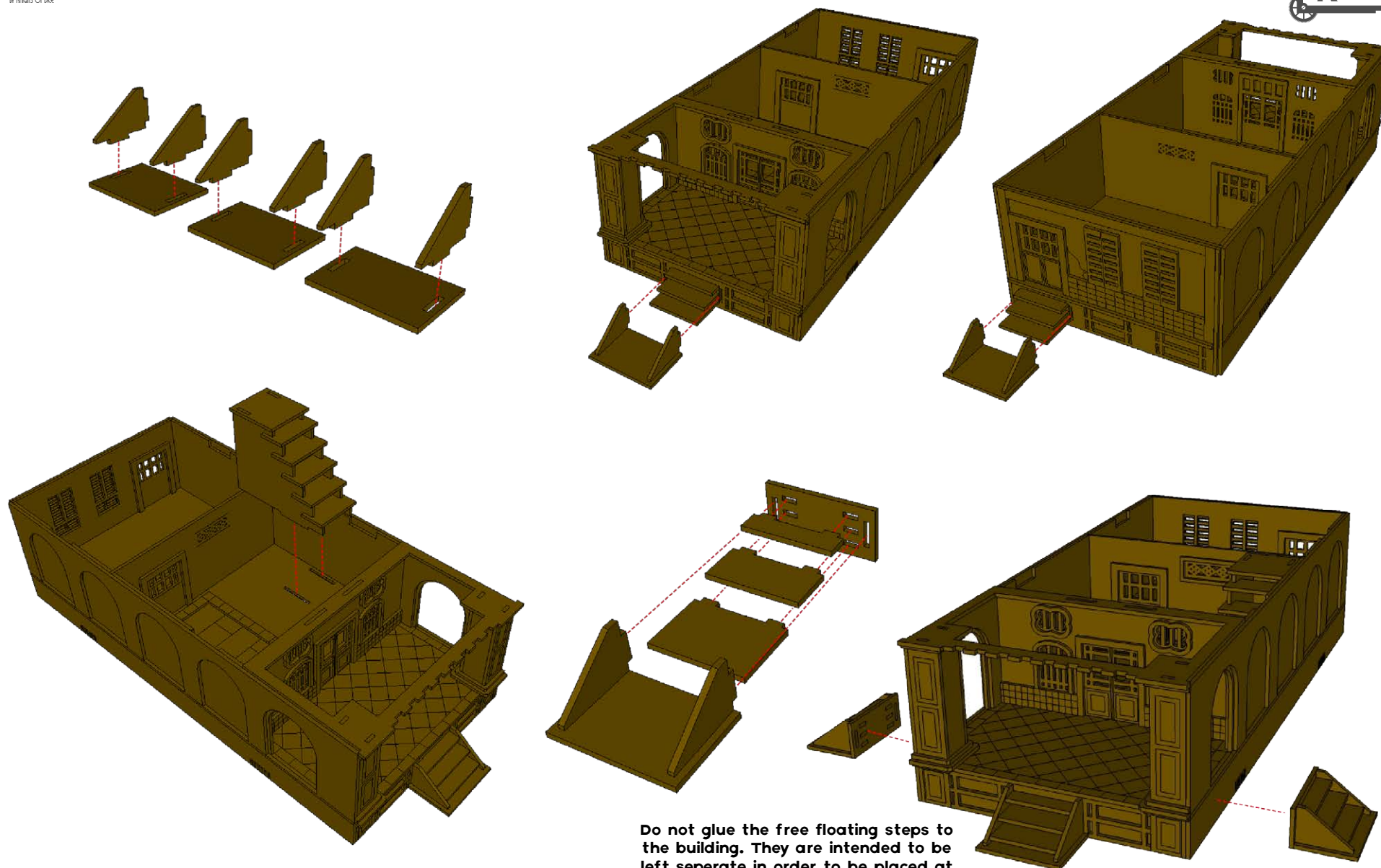
SHOPHOUSES ASSEMBLY INSTRUCTIONS



Use the etching on the other side of the airwell floor pieces to align the airwell floor

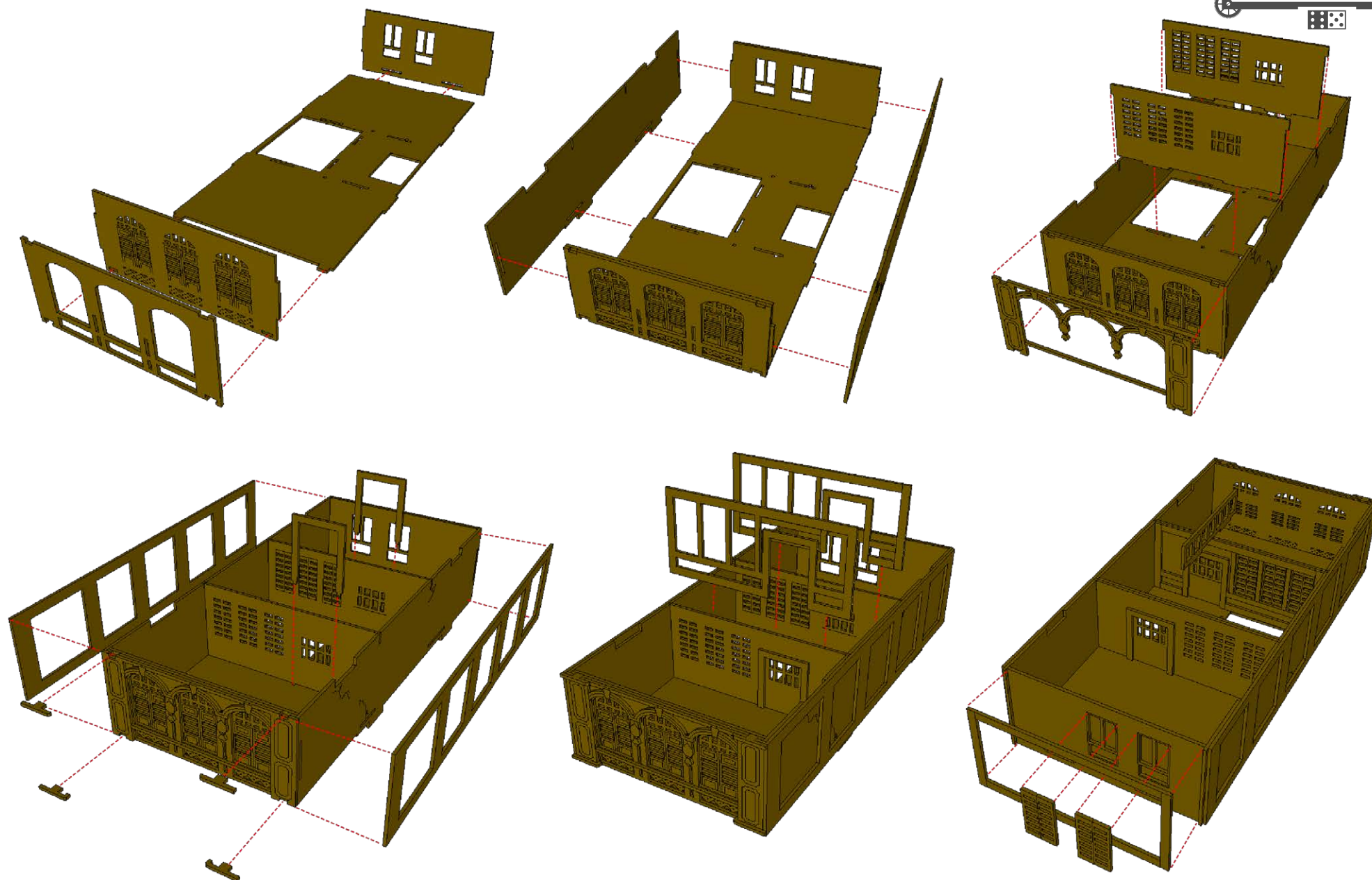


SHOPHOUSES ASSEMBLY INSTRUCTIONS

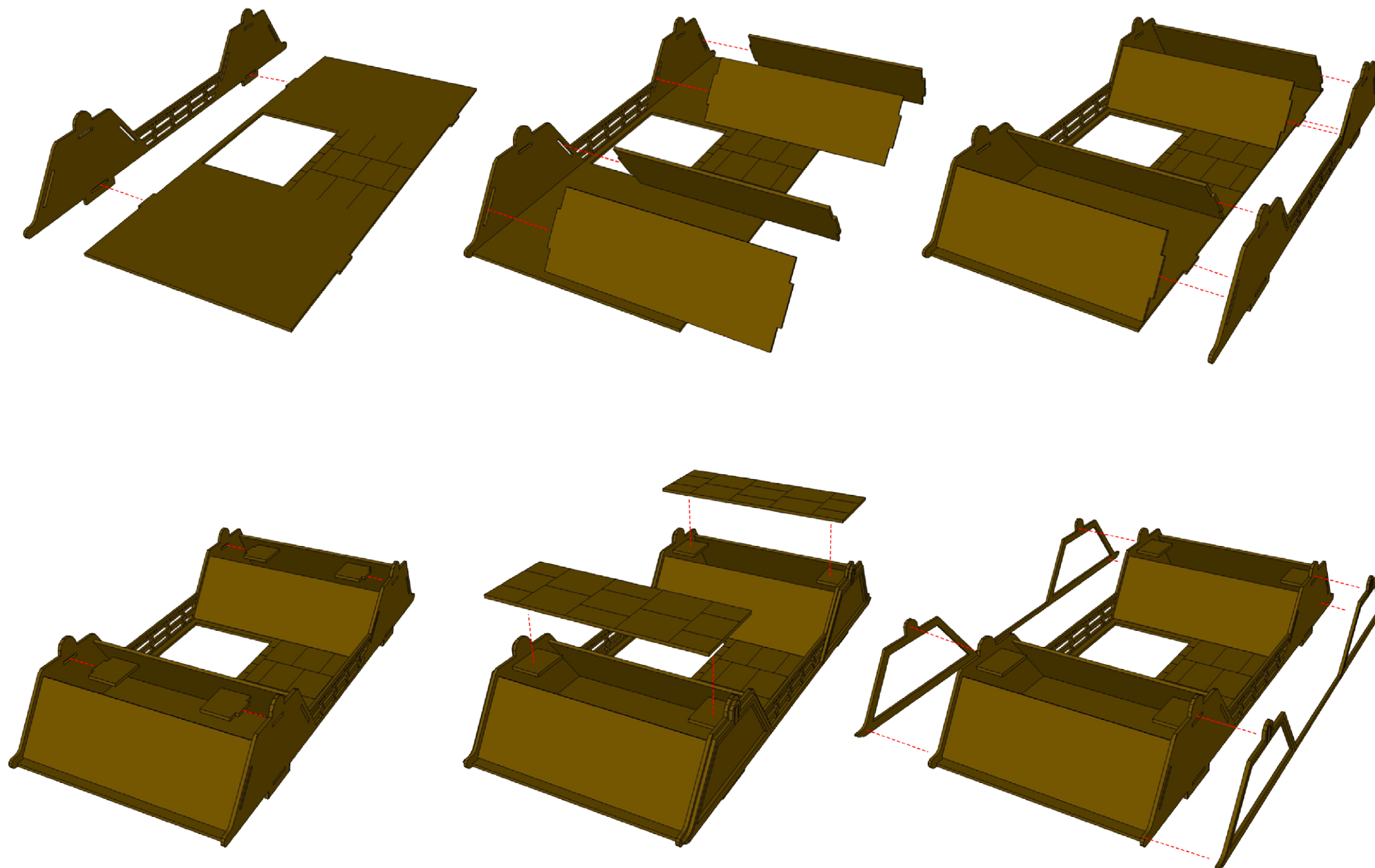


Do not glue the free floating steps to the building. They are intended to be left separate in order to be placed at the end of rows of shophouses. Gluing them will prevent your shophouse from being able to be placed in a row with other houses as intended

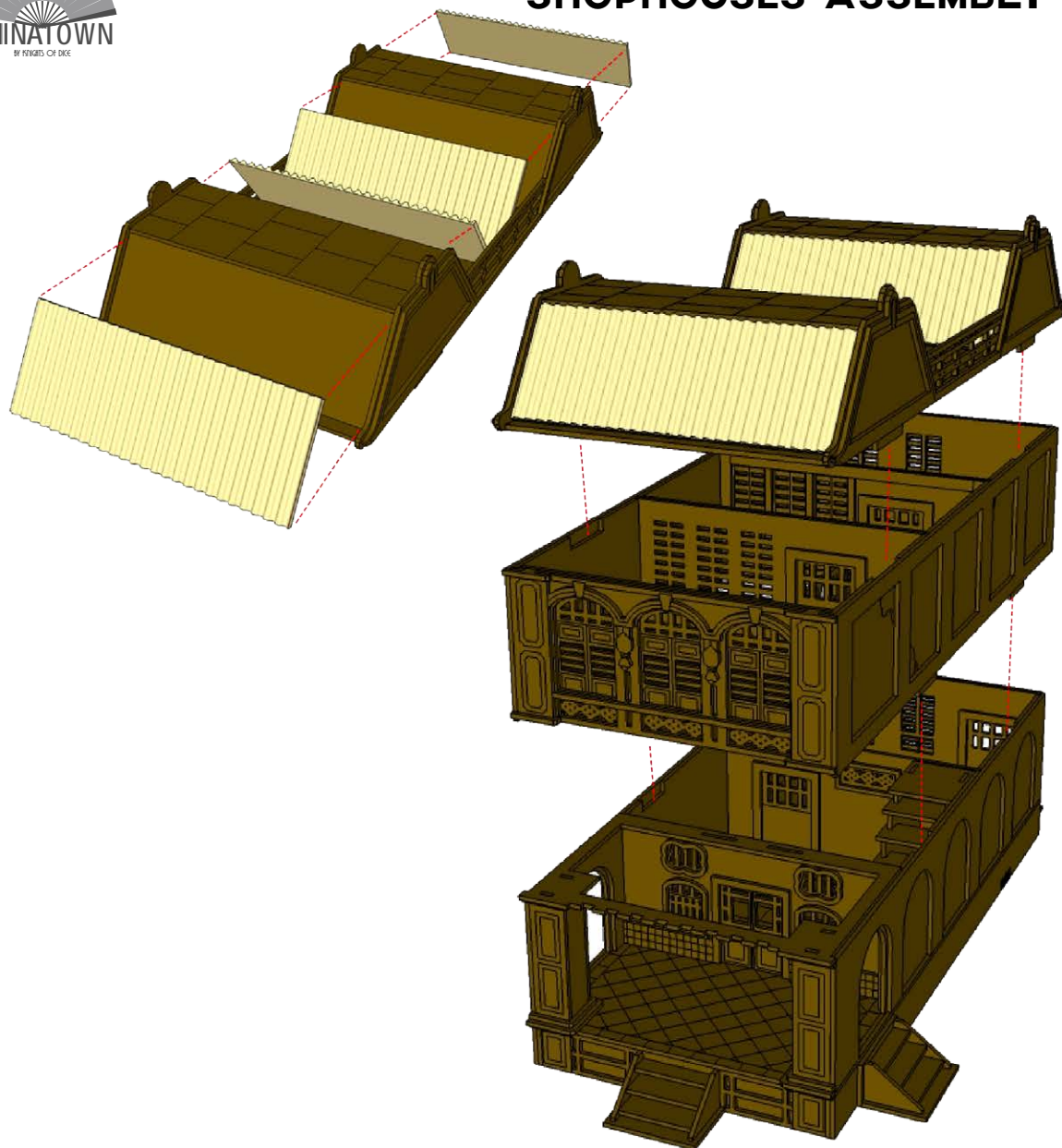
SHOPHOUSES ASSEMBLY INSTRUCTIONS



SHOPHOUSES ASSEMBLY INSTRUCTIONS



SHOPHOUSES ASSEMBLY INSTRUCTIONS



Do not glue your floors
together to allow for
interior access or adding
on of additional floors

