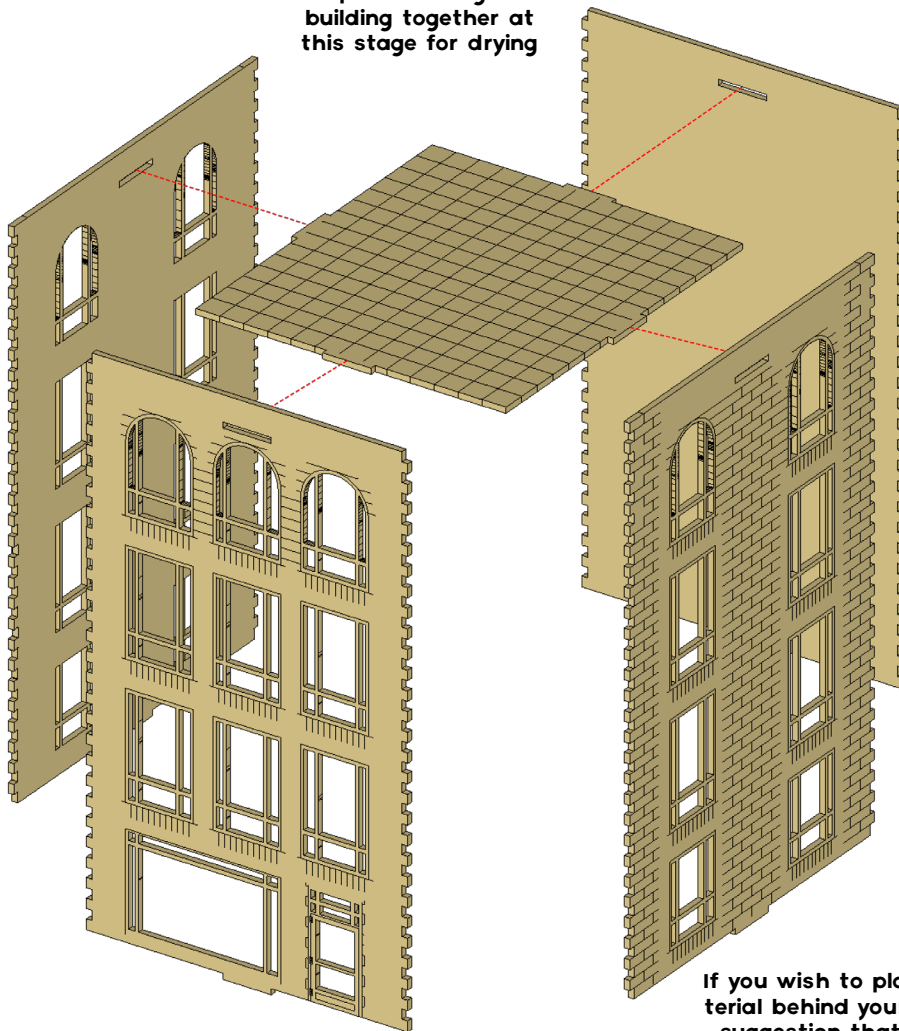
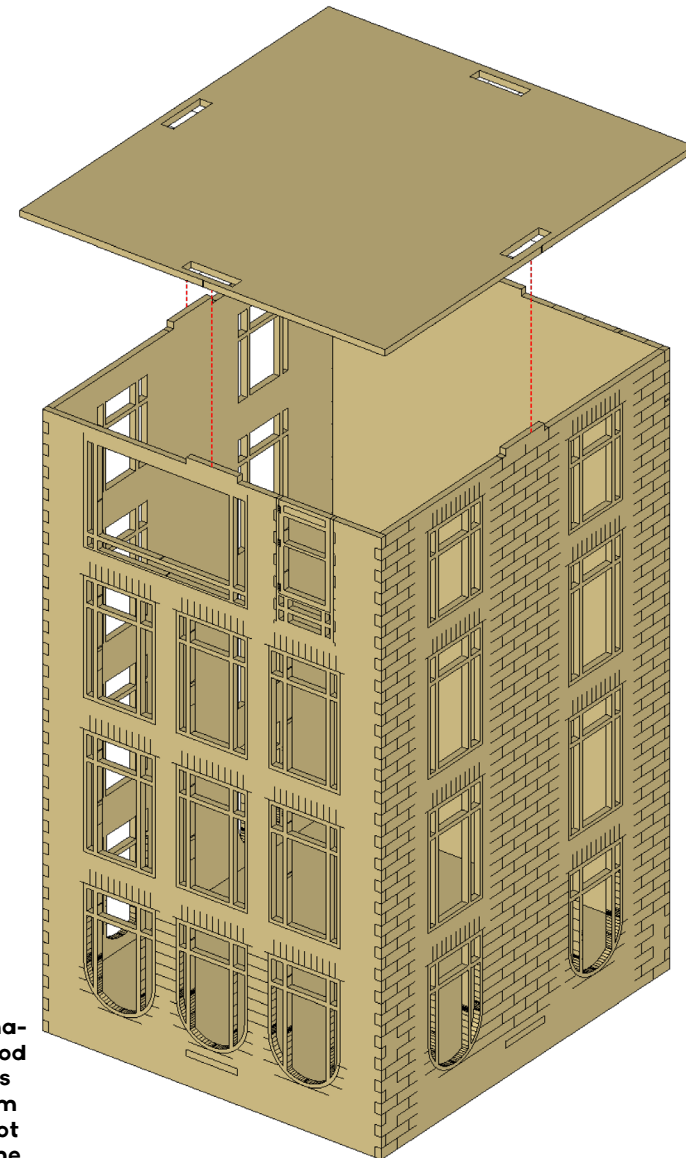


ROGERS, ENGLEHART & PARTNERS ASSEMBLY INSTRUCTIONS

We have found that a large elastic band helps in holding the building together at this stage for drying



If you wish to place a backing material behind your windows (a good suggestion that we have used is reflective foil card, available from art and stationary stores), do not glue the base in place at this time, wait until after painting the main building. You will still need to slot the base in place to assist with the gluing of the facade pieces however.

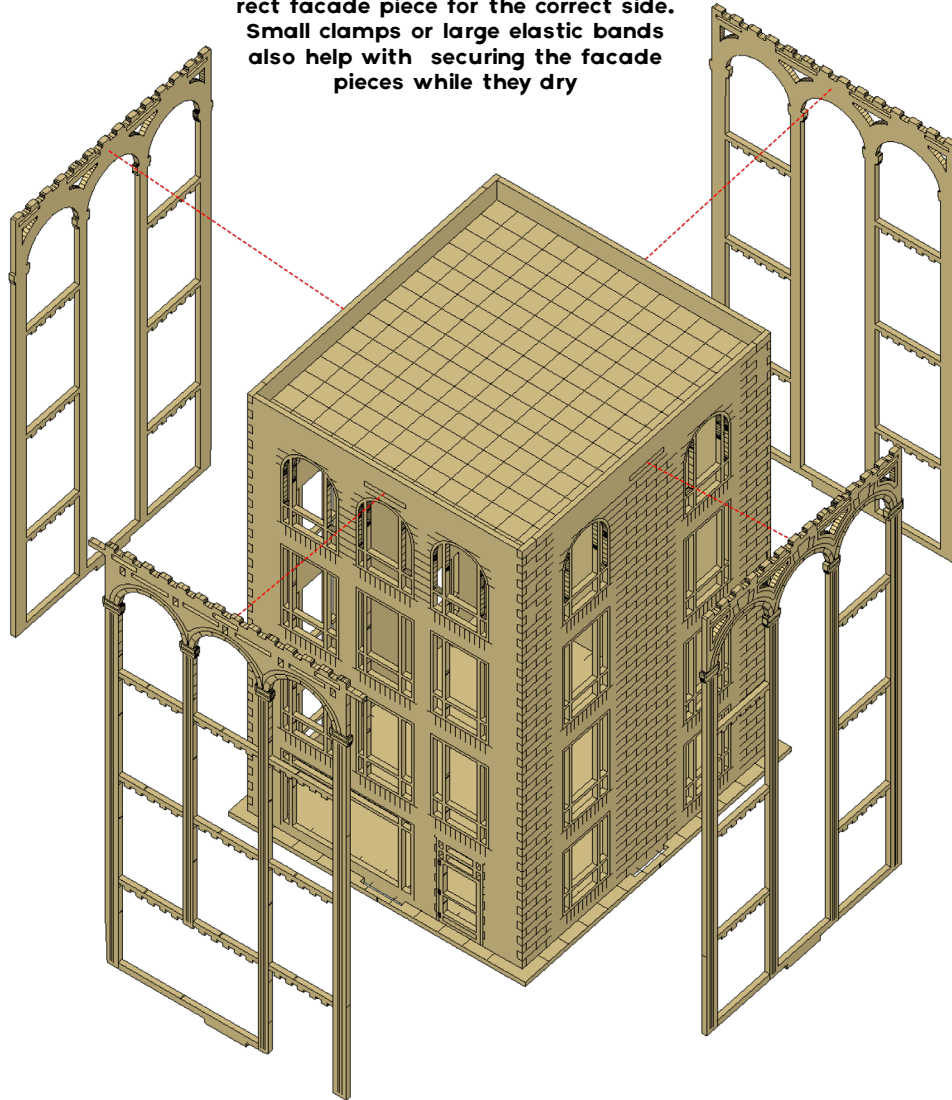




ROGERS, ENGLEHART & PARTNERS ASSEMBLY INSTRUCTIONS



We've found it useful to Apply glue to the facade pieces, then slot them into the holes on the base piece. Make sure you have the correct facade piece for the correct side. Small clamps or large elastic bands also help with securing the facade pieces while they dry



Find the longest piece of roof trim, then dry fit to the roof before gluing to ensure you glue the correct pieces to there corresponding sides as the building is not square

