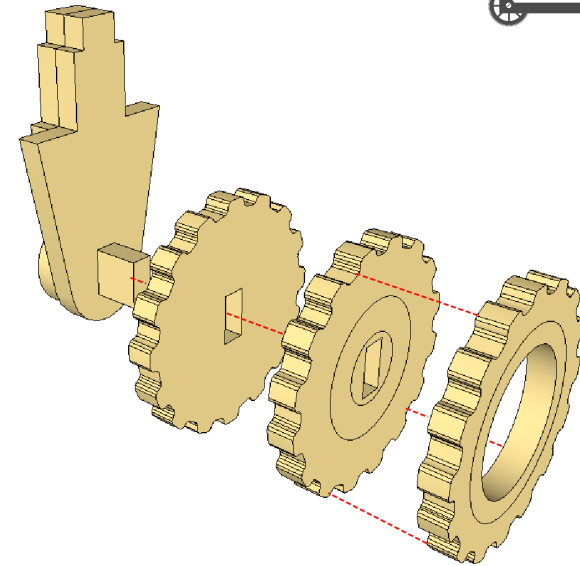
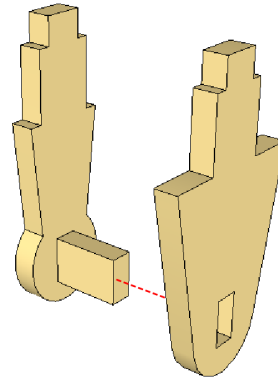
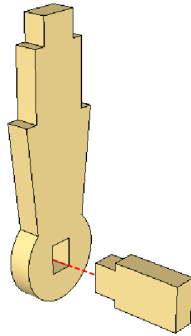
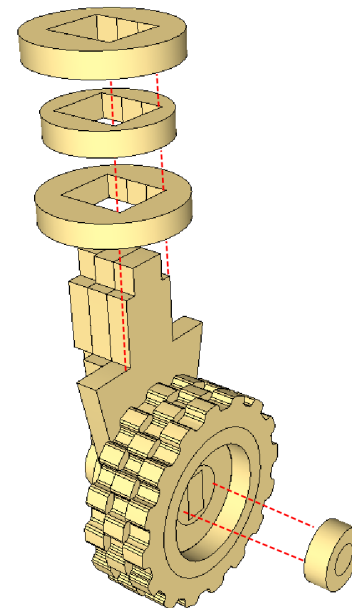
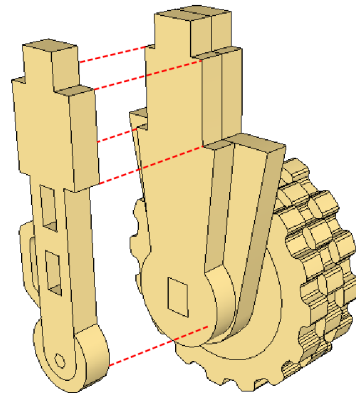


STRADDLE CARRIER ASSEMBLY INSTRUCTIONS

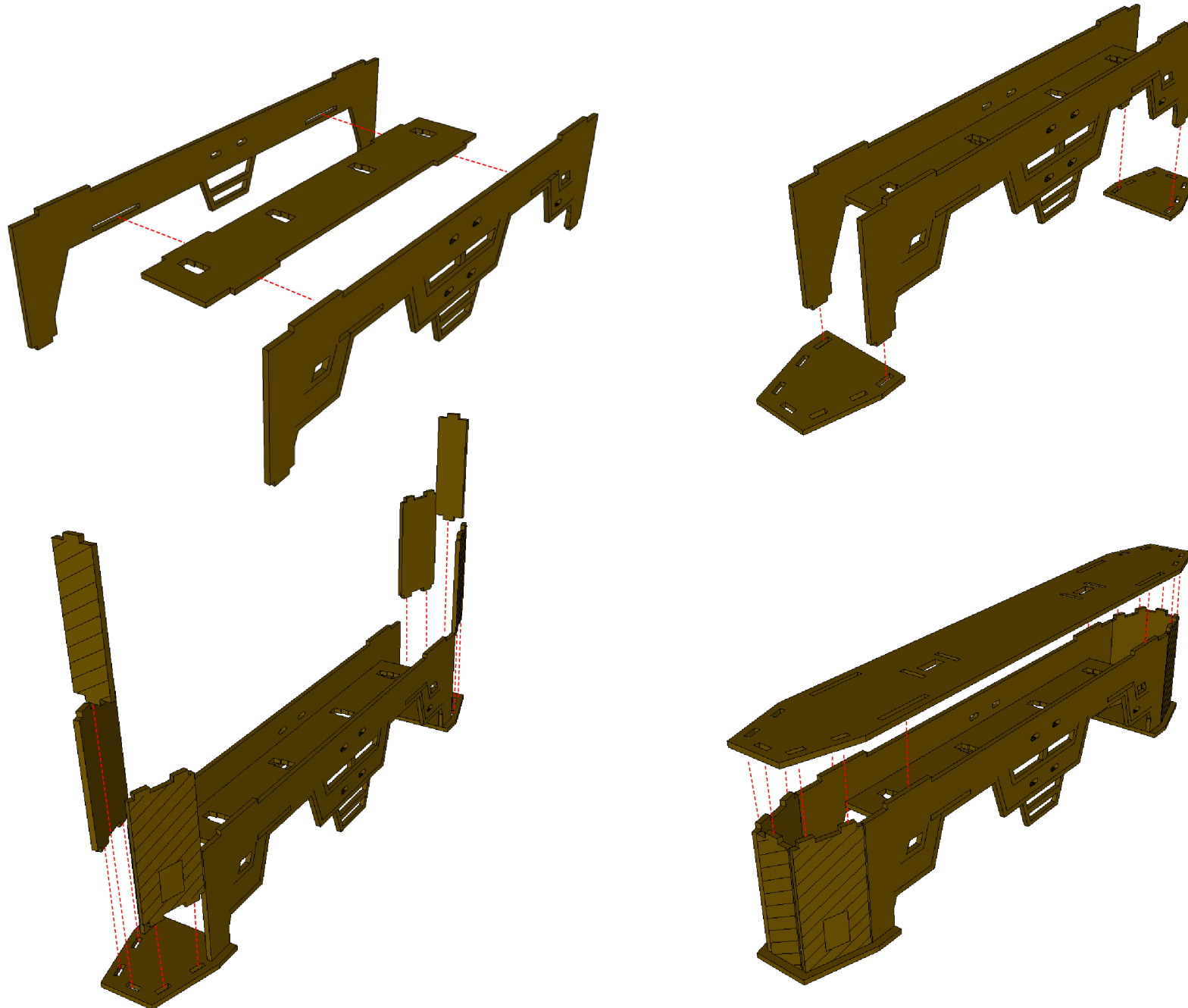


The Straddle Carrier is an impressive model, containing a whole mess of parts! The construction isn't terribly difficult, but it does require some patience. Take your time, read through these instructions and with care you'll have a beast of a centerpiece for your industrial or dockside setups!

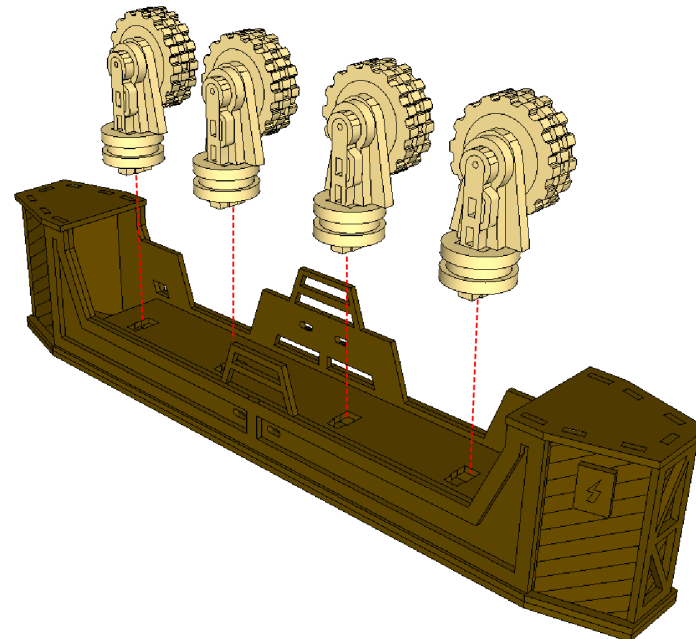
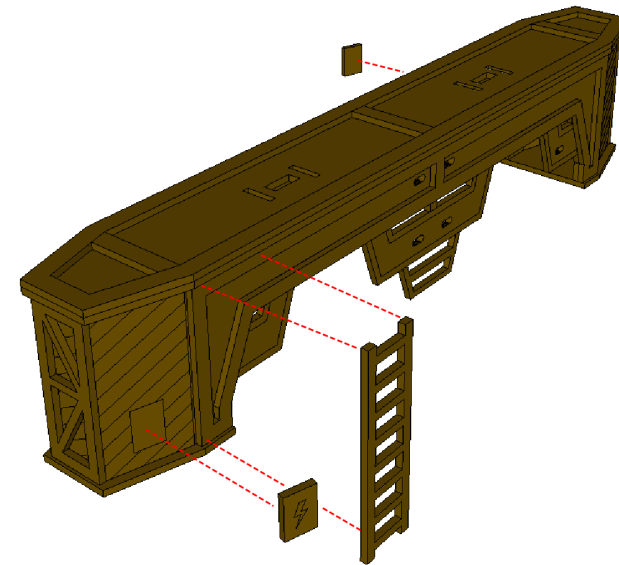
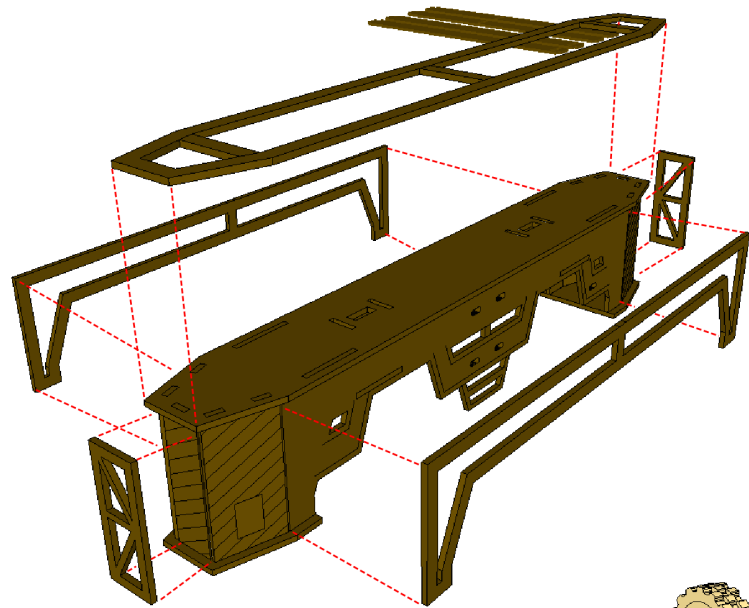


Repeat these steps for all 8 wheels and set them aside. By the time you're done with the carrier sides your wheels should be dry enough for the next step.

STRADDLE CARRIER ASSEMBLY INSTRUCTIONS



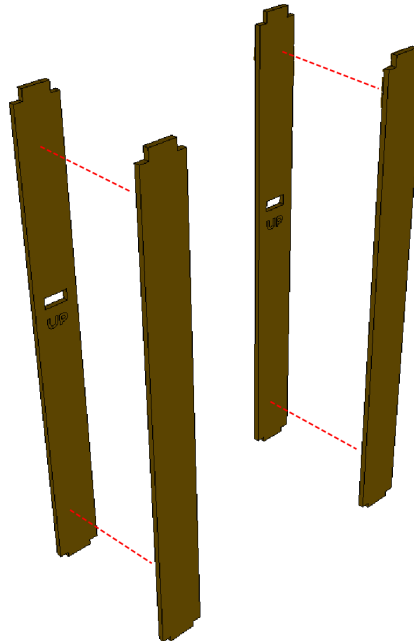
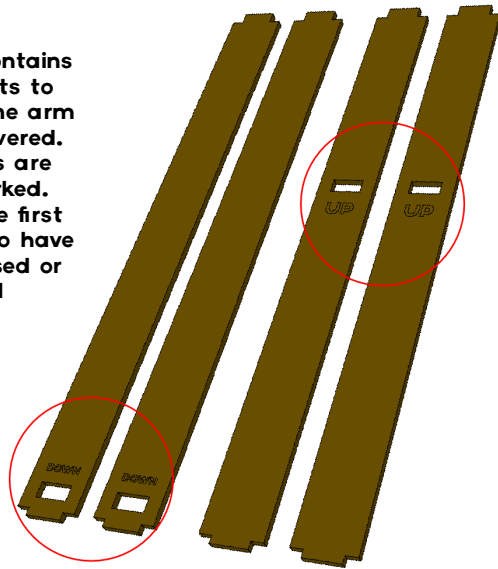
STRADDLE CARRIER ASSEMBLY INSTRUCTIONS



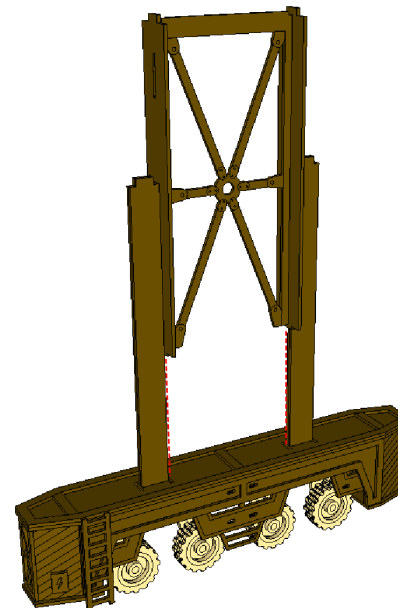
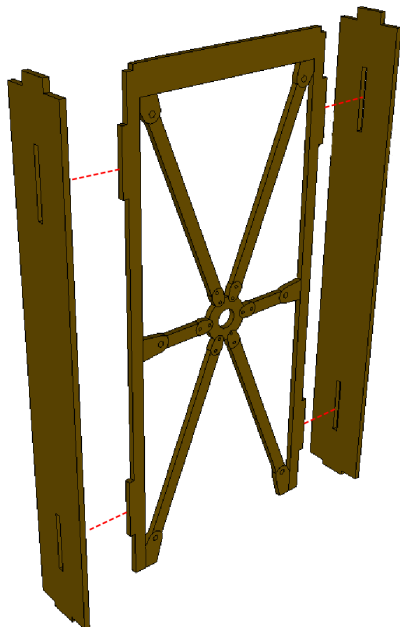
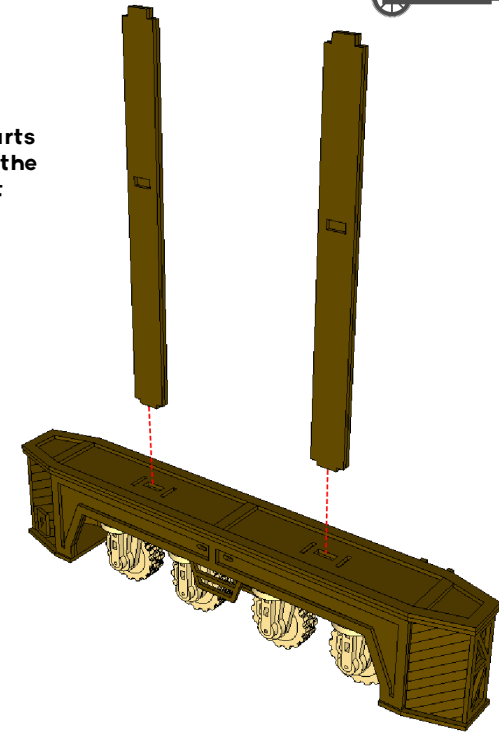
Repeat these
steps for both
sides of the carrier

STRADDLE CARRIER ASSEMBLY INSTRUCTIONS

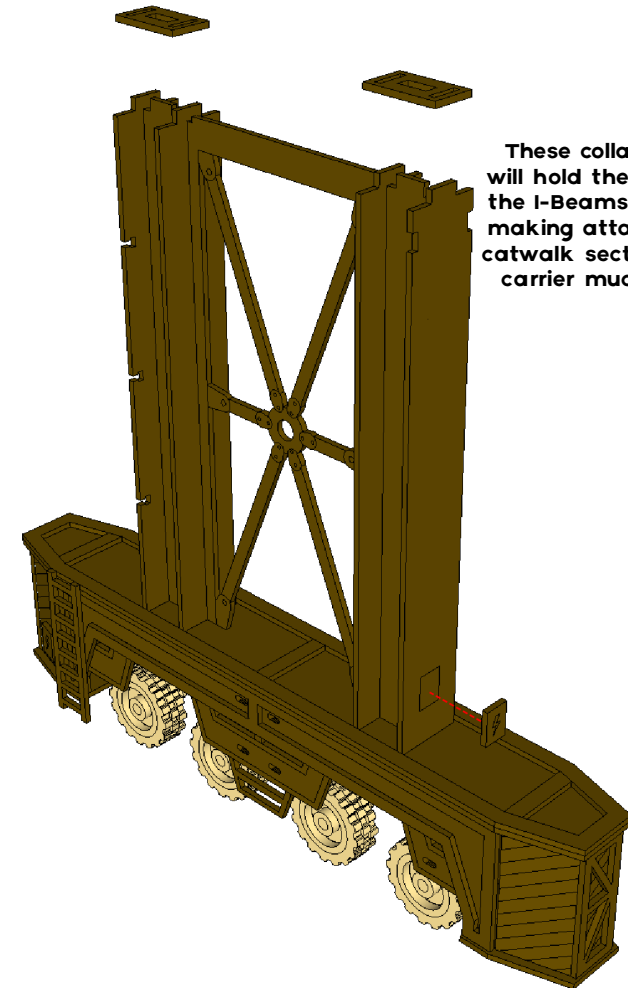
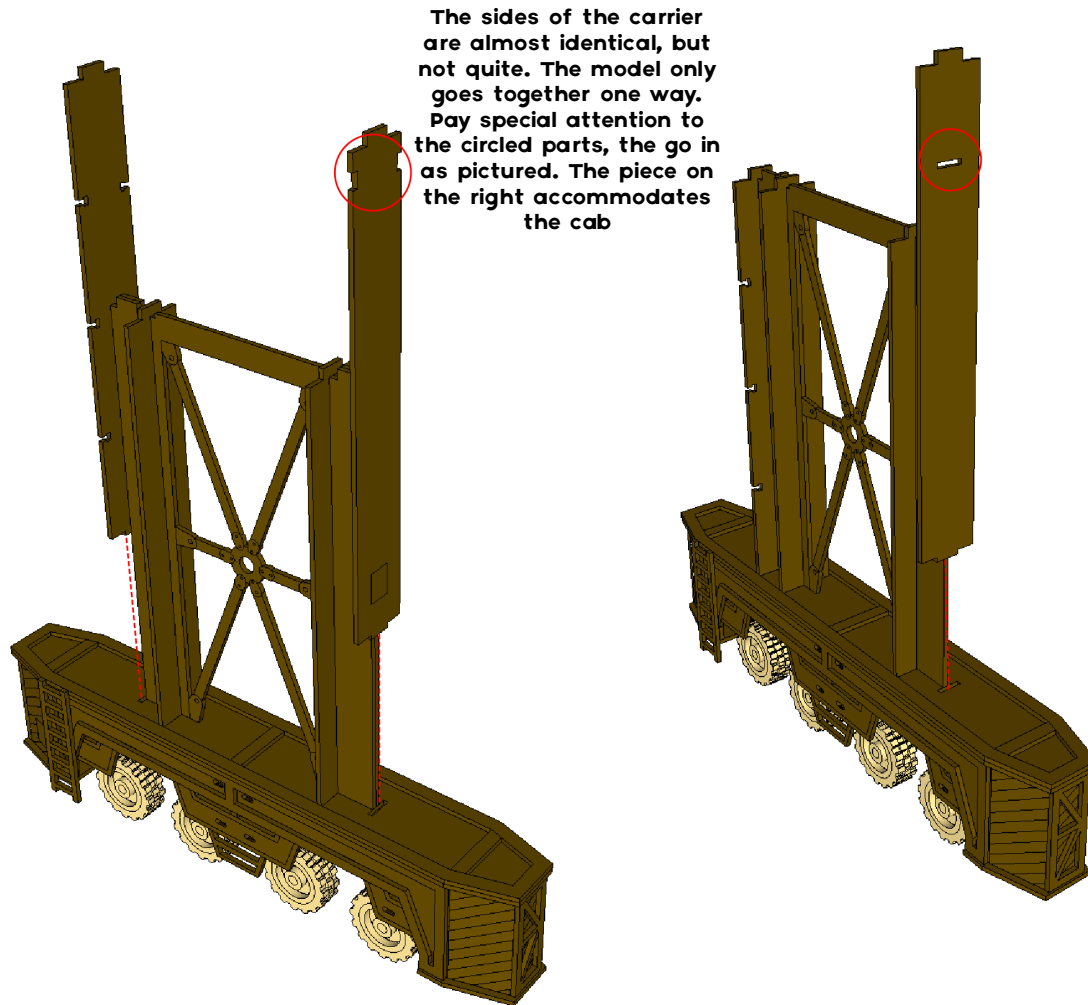
The model contains enough parts to have the crane arm raised or lowered. These parts are clearly marked. Locate these first and choose to have the arm raised or lowered



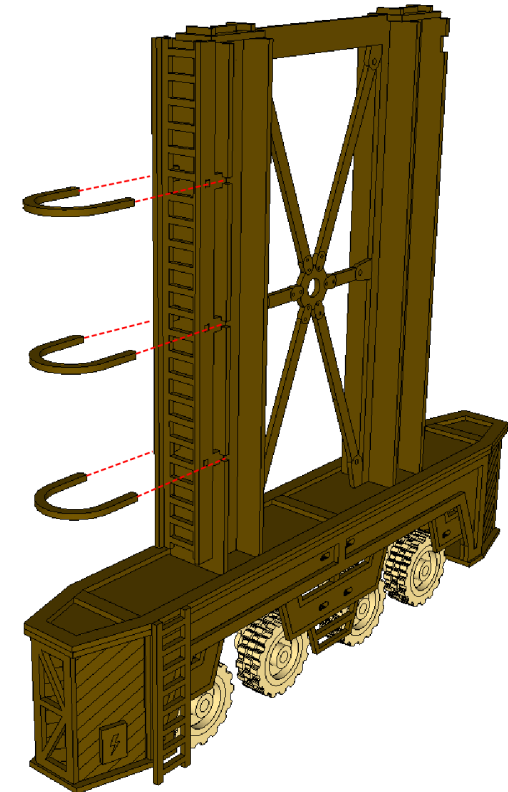
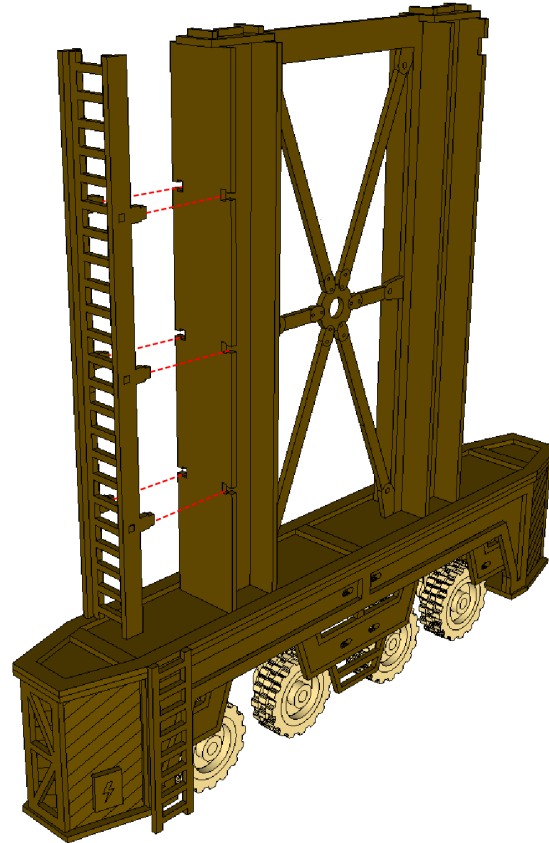
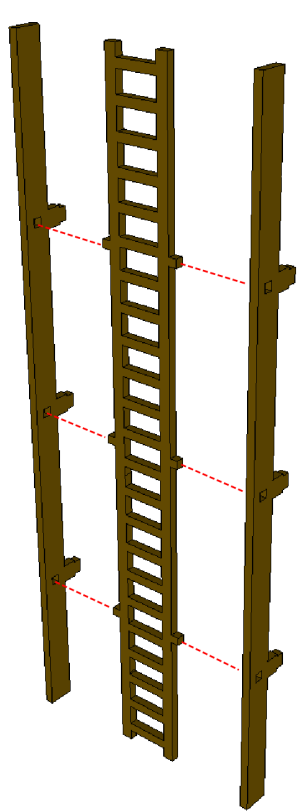
Glue the arm parts label in, to hide the engraved text



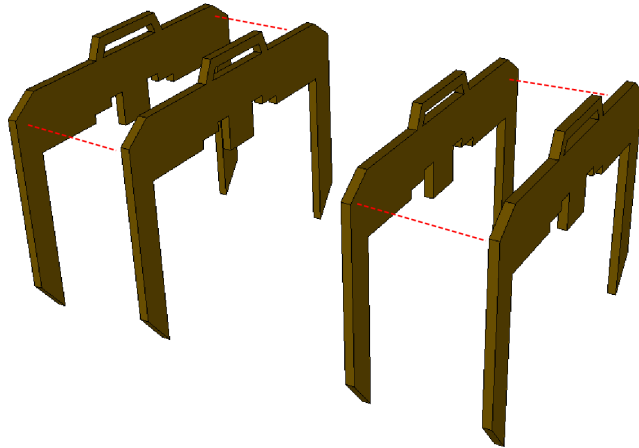
STRADDLE CARRIER ASSEMBLY INSTRUCTIONS



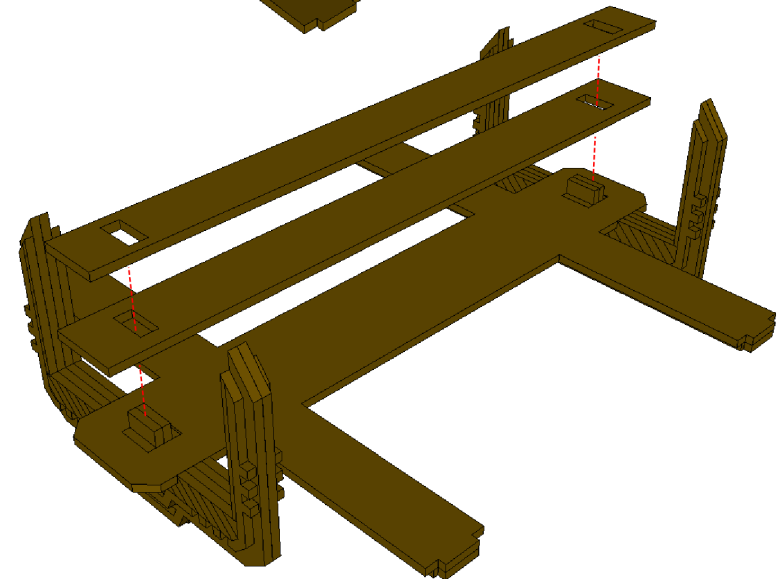
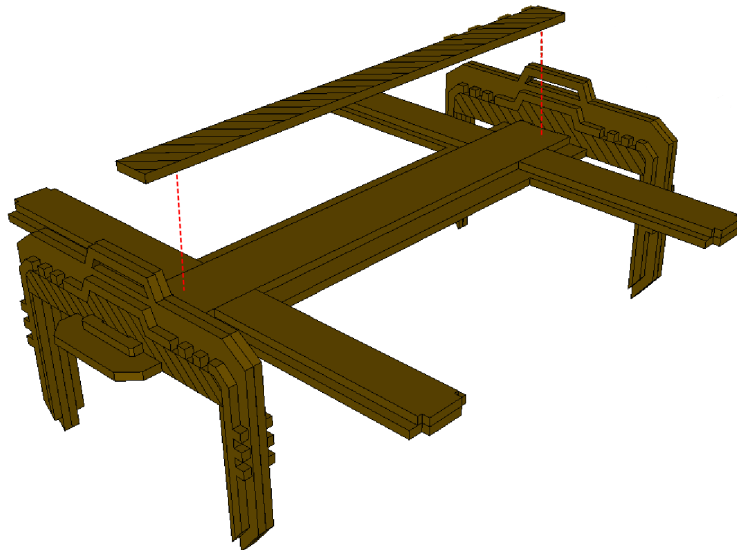
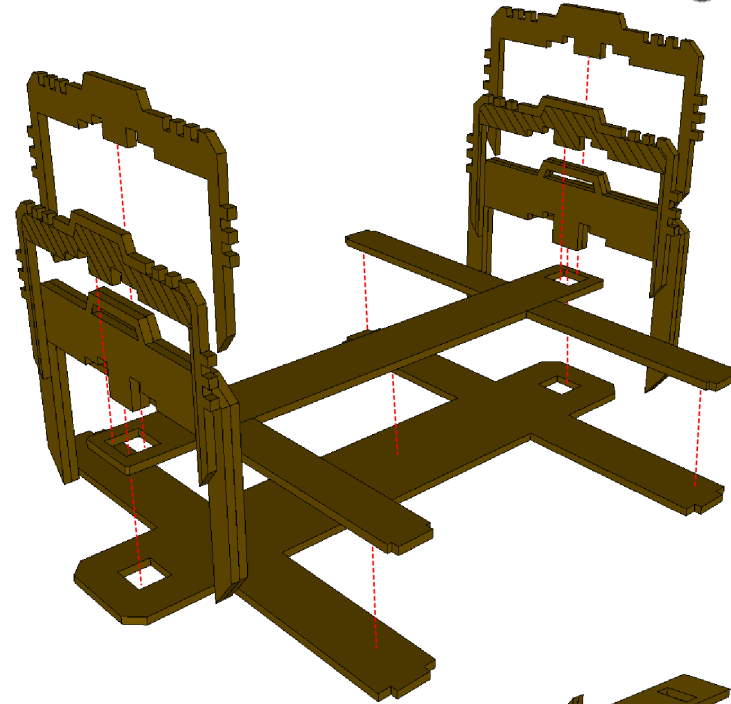
STRADDLE CARRIER ASSEMBLY INSTRUCTIONS



STRADDLE CARRIER ASSEMBLY INSTRUCTIONS

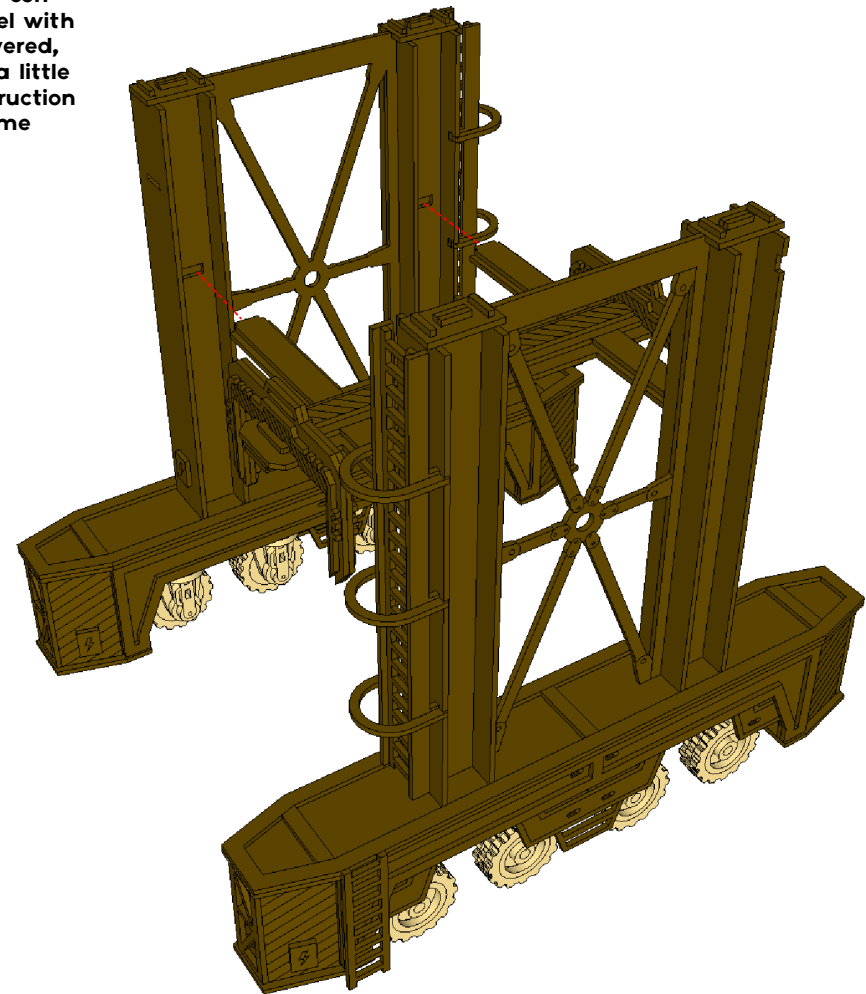
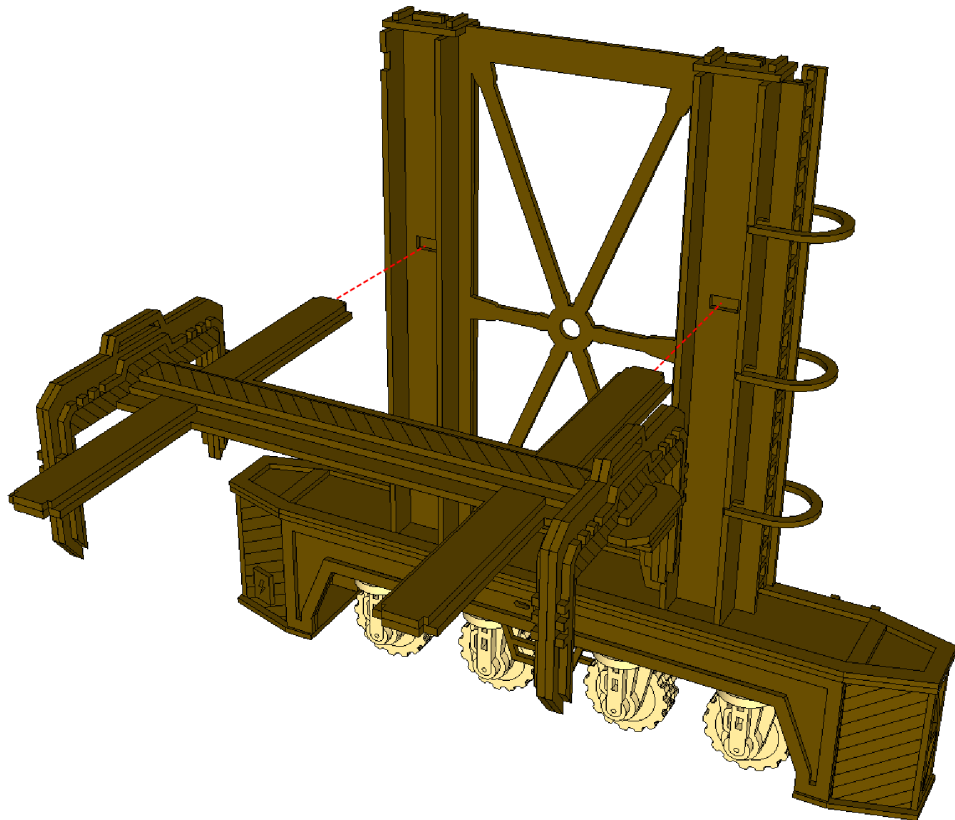


The arm is easy to assemble, but
deceptively fiddly.
Take your time



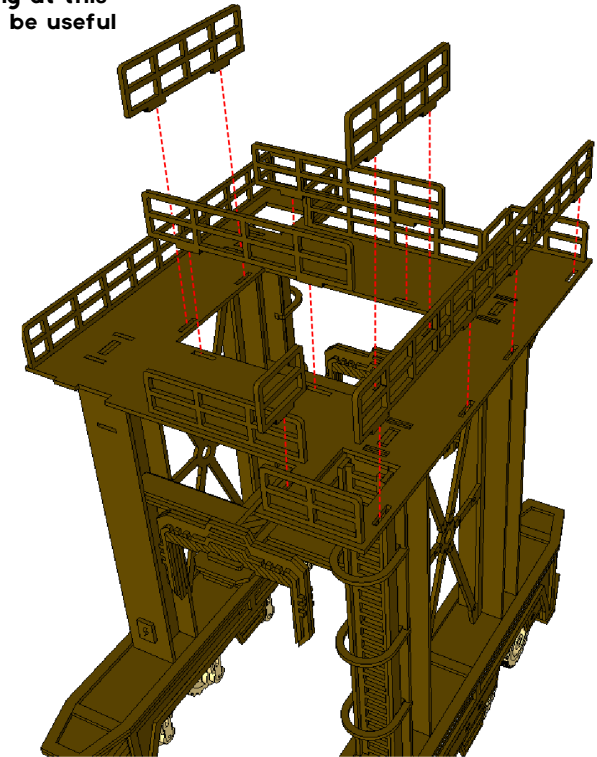
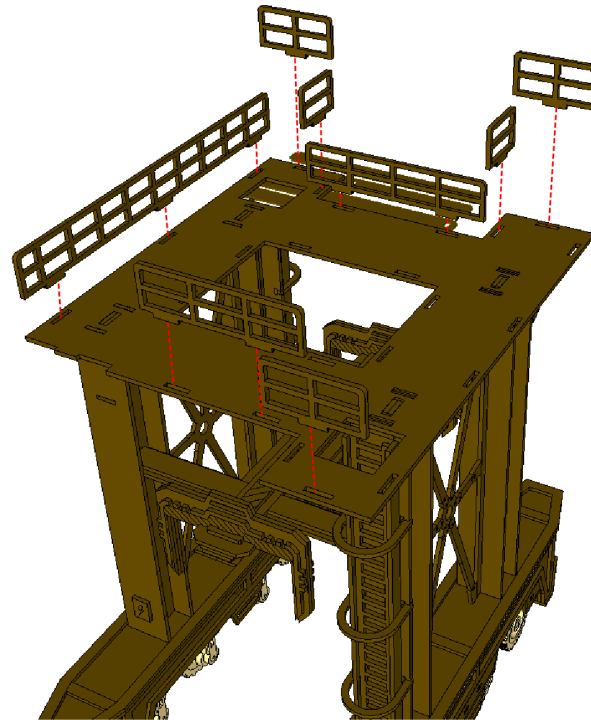
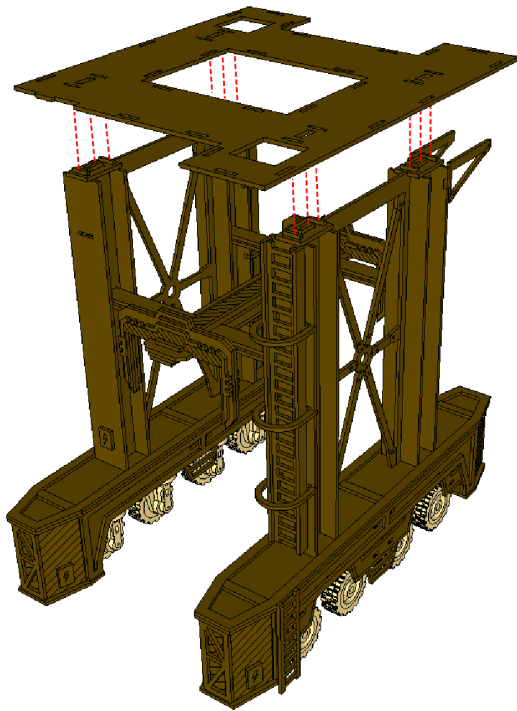
STRADDLE CARRIER ASSEMBLY INSTRUCTIONS

Obviously if you're constructing your model with the crane arm lowered, this step will look a little different, but construction remains the same

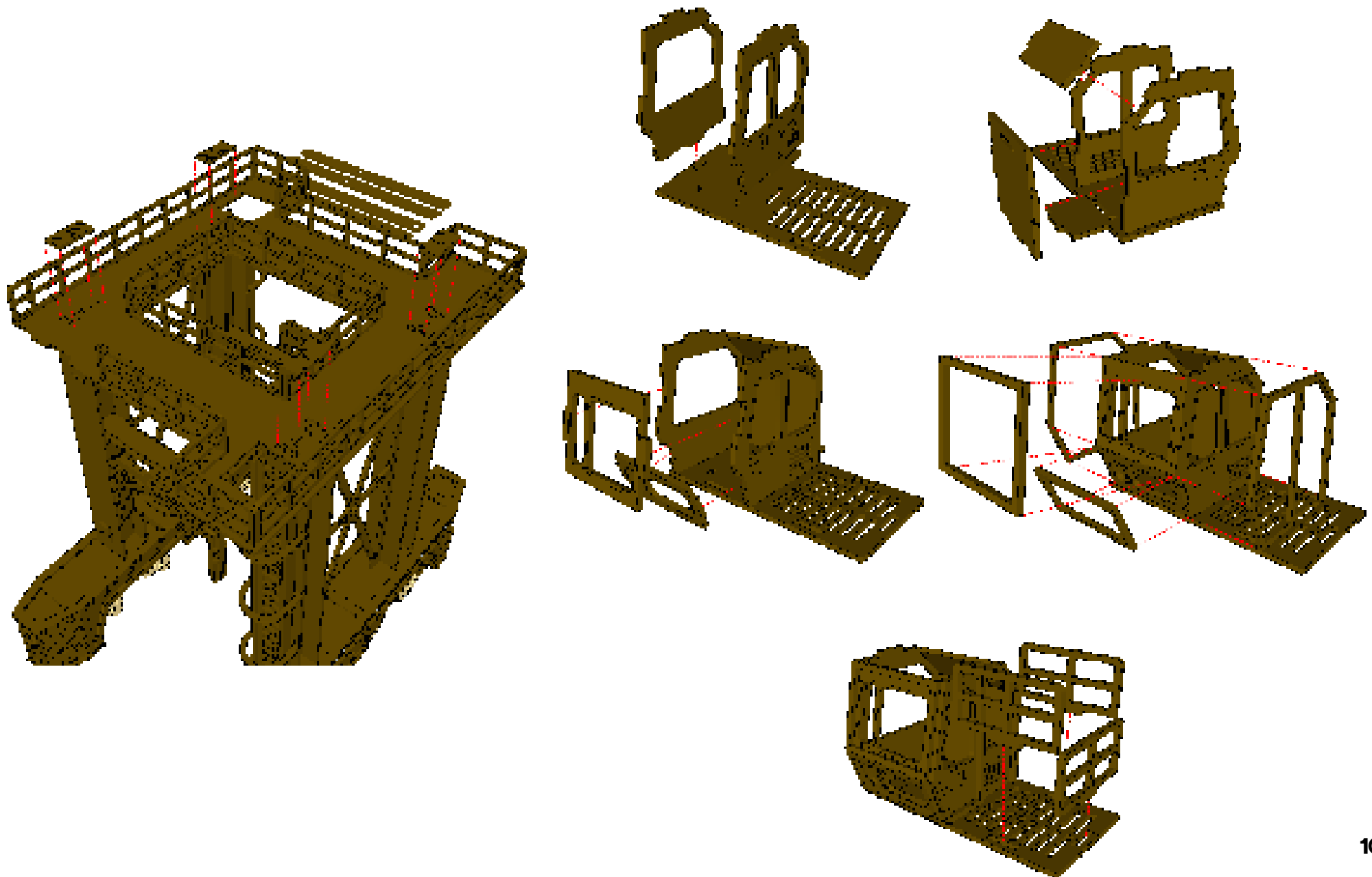


STRADDLE CARRIER ASSEMBLY INSTRUCTIONS

The rails all fit in specific places, so dry fitting at this step can be useful

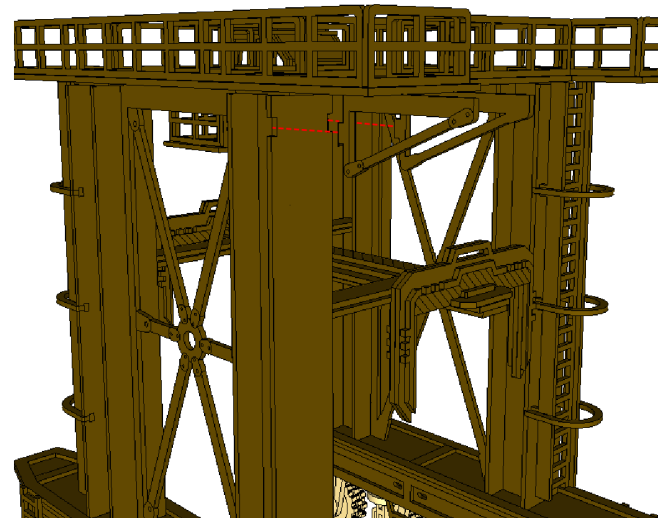
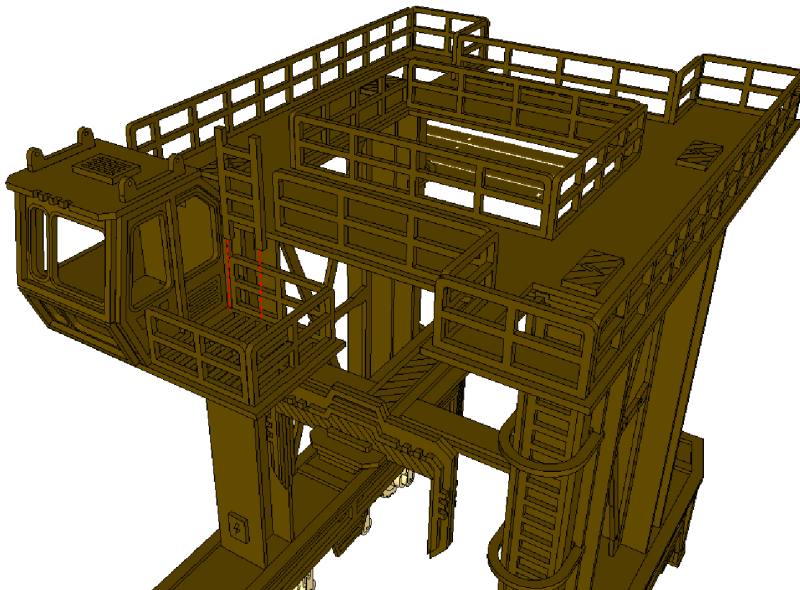
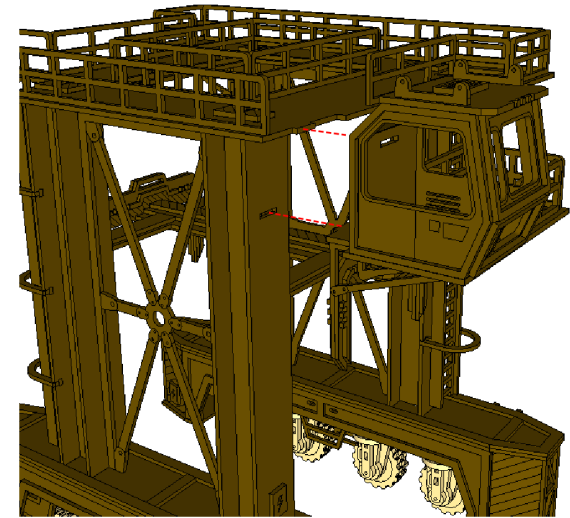
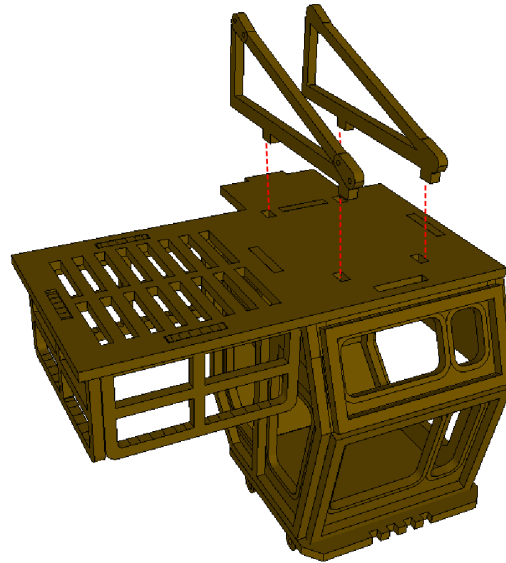
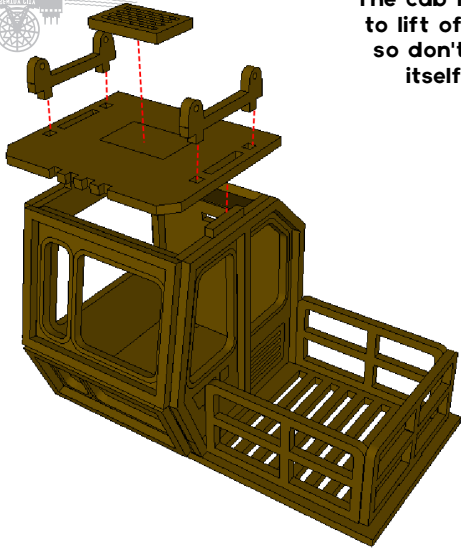


STRADDLE CARRIER ASSEMBLY INSTRUCTIONS



STRADDLE CARRIER ASSEMBLY INSTRUCTIONS

The cab roof is designed to lift off, if you desire, so don't glue the roof itself to the cab



STRADDLE CARRIER ASSEMBLY INSTRUCTIONS

The crane arm has a pretty tight grip on the shipping containers, which may become difficult after painting. We recommend either gluing a container permanently in place, lightly sanding back the inside of the crane grips, or experimenting with magnets or some other form of attachment

