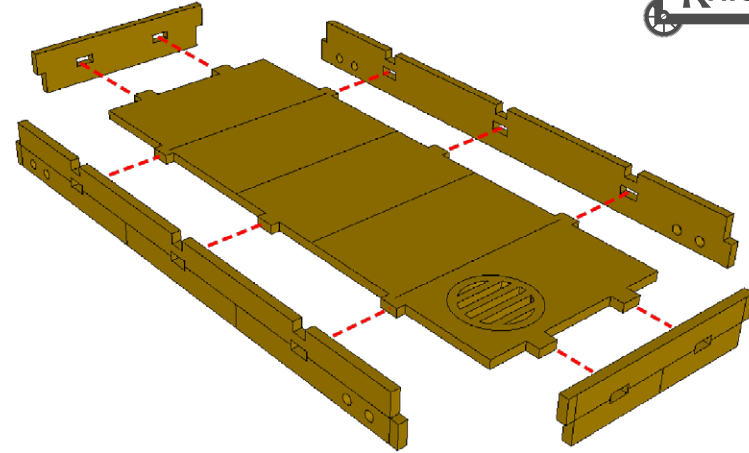
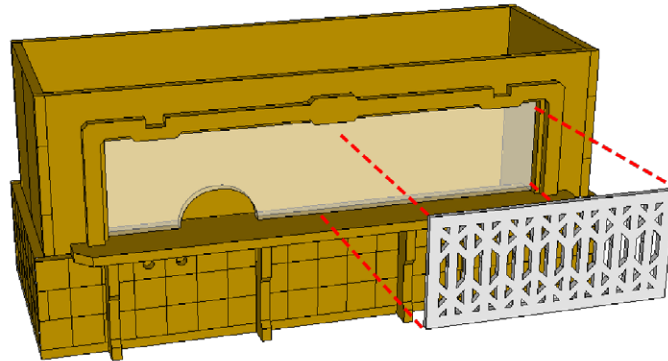


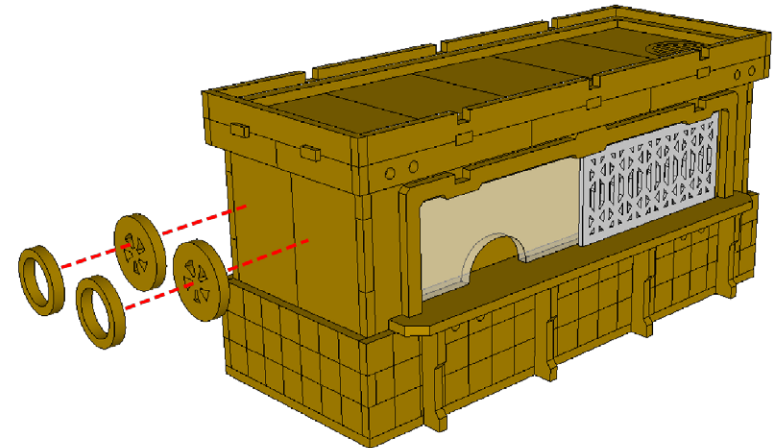
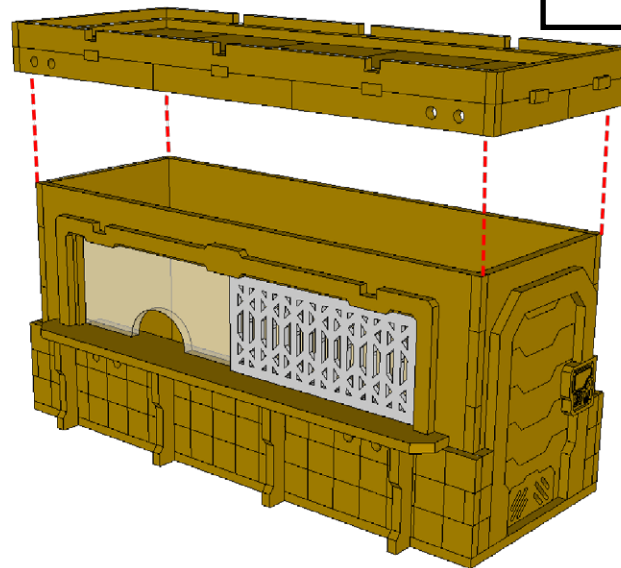
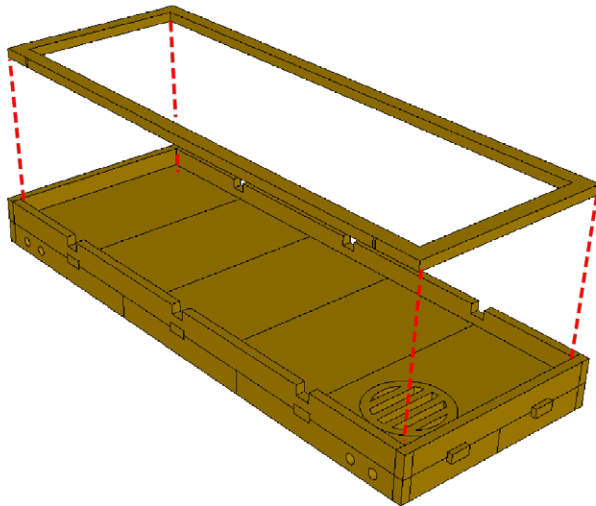
We use a non-fogging superglue designed for gluing clear parts to affix our acrylic pieces. The brand we use is Loctite Glass. It is worth hunting around in your local hardware store for a similar glue!



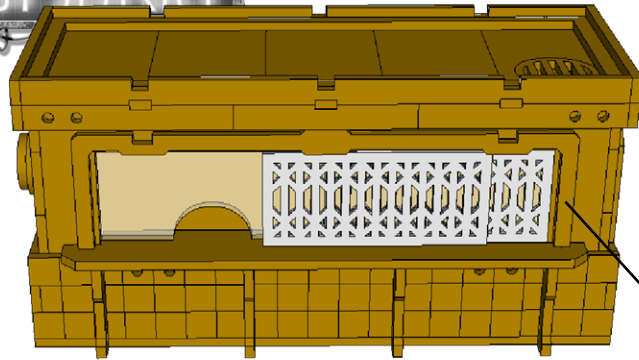
We use a non-fogging superglue designed for gluing clear parts to affix our acrylic pieces. The brand we use is Loctite Glass. It is worth hunting around in your local hardware store for a similar glue!



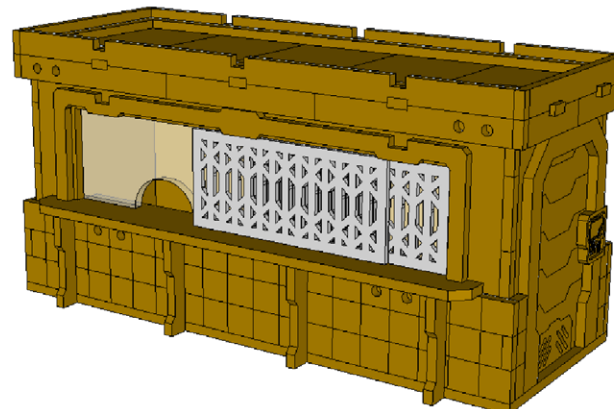
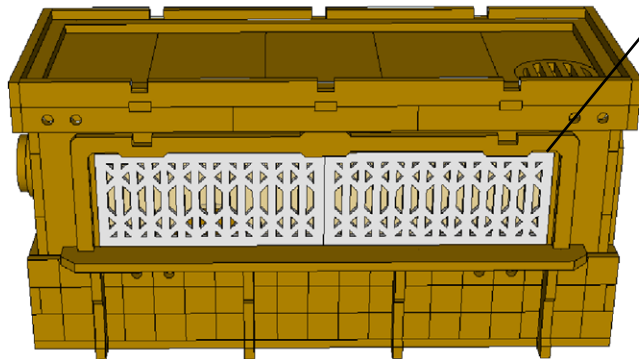
Don't glue your roof piece on if you want to be able to access the interior of the building



TRADER KIOSK INSTRUCTIONS



The second grill piece can be glued in an open or closed position



This kit is compatible with the Plasteel Pillars kit and can serve as a height booster. It is the same height as the pillar booster kit so can be used in conjunction with that kit

